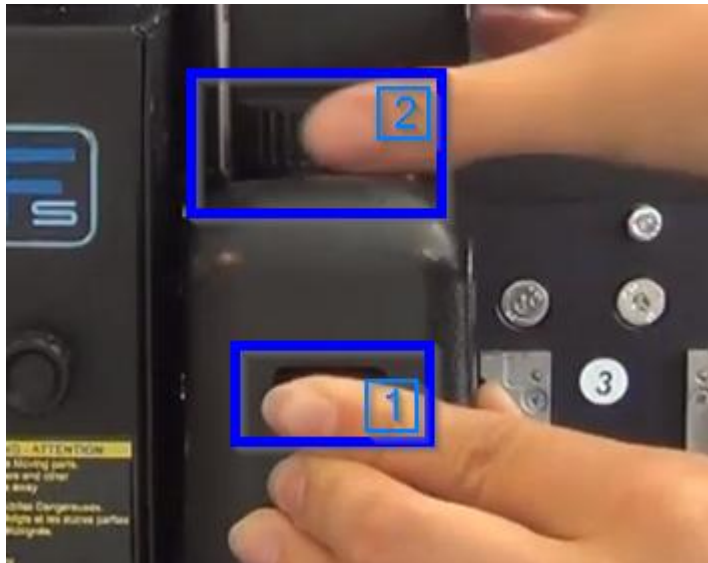


How to Replace a Summa F Series Heavy Duty Cutout Knife Blade

1. Click 'Change Tool' in Axis Control.
2. Push the button (1), turn the wheel counterclockwise (2), and remove the tool.



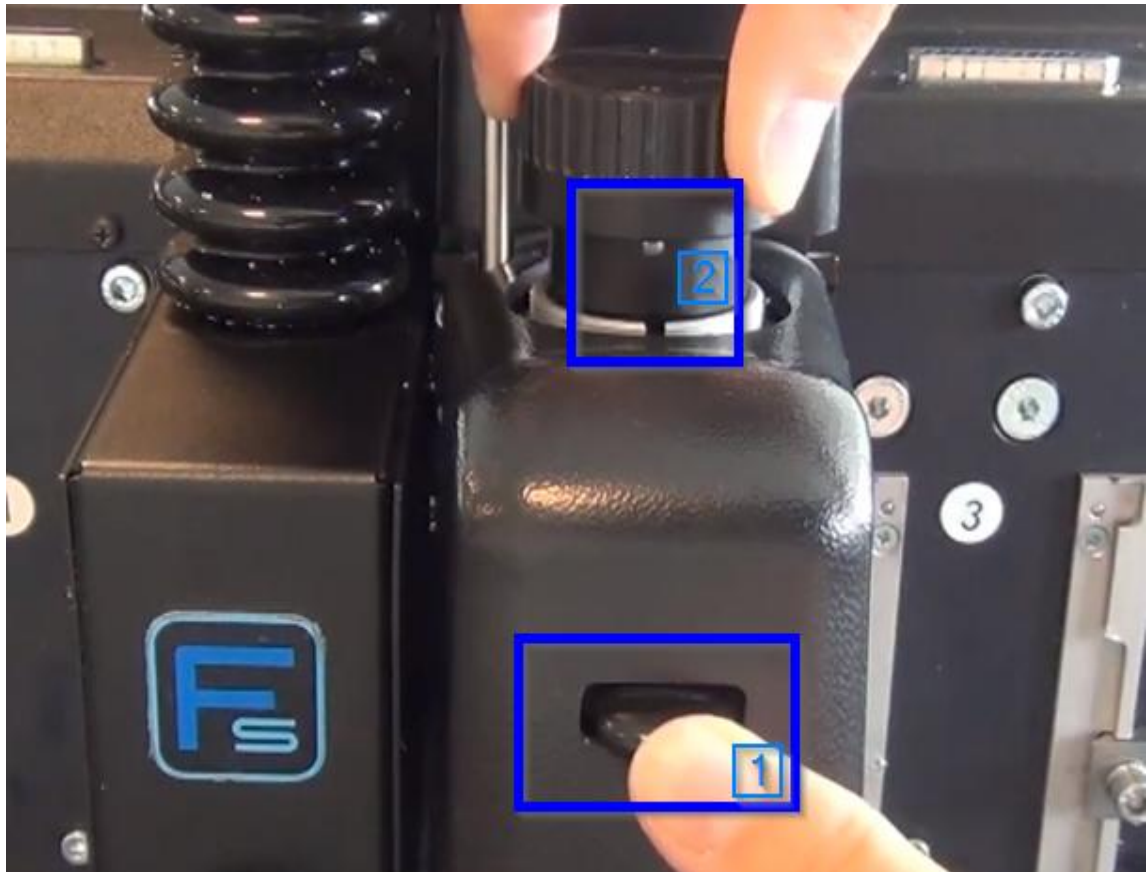
3. Remove the two screws.



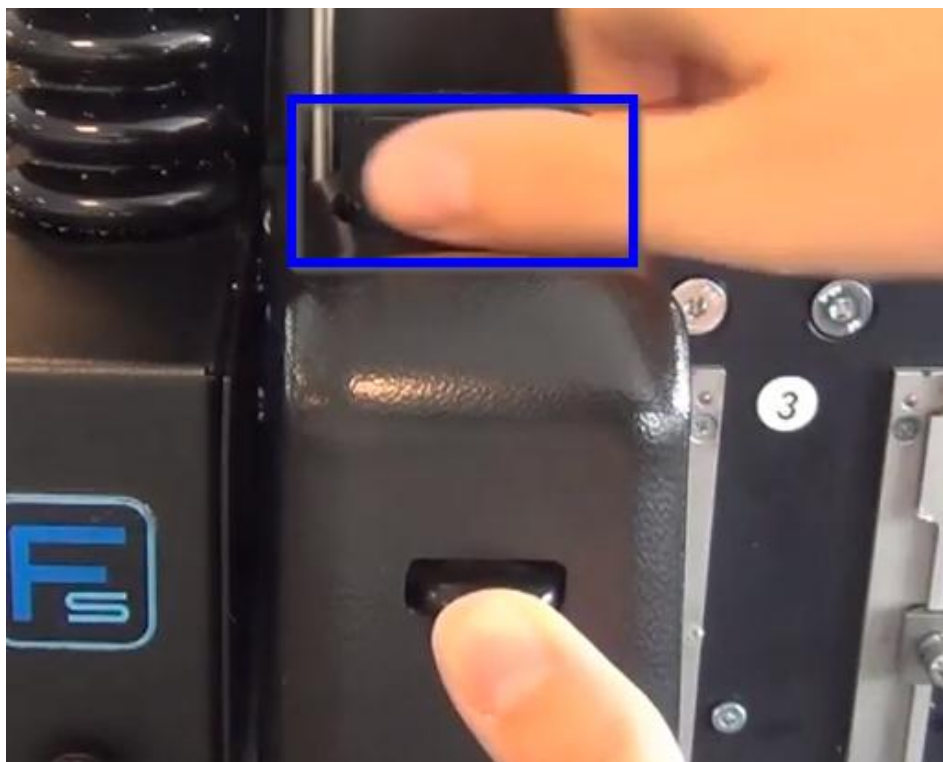
4. Carefully remove the knife. Position the point in the middle of the holder and tighten the two screws.



5. Press the button (1) and insert the tool back into the module. Turn the knob until the pin falls in the slot. (2)



7. Keep turning the wheel until it's tight.



8. Click 'Online' in Axis Control.

