



## Summa service aid – F SERIES

Bulletin No:2104

Summa F Series carriage board new revision (KIT-5003)

Summa F Series firmware MD9974 revision 37

Date: 30-03-2021

### Introduction

Summa releases a new carriage board with high-performance drivers.

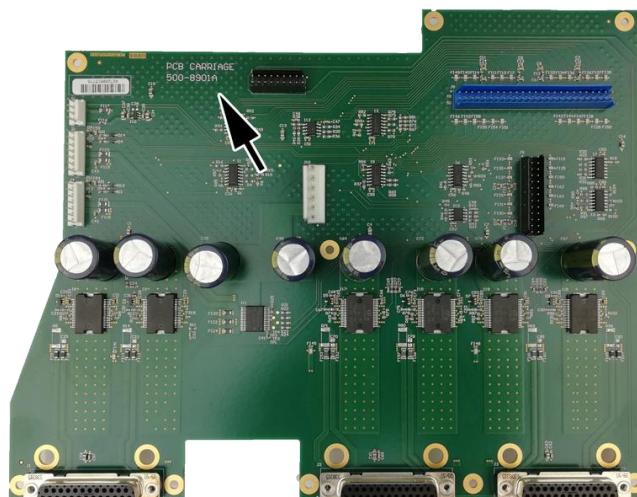
The improved overcurrent protection of the new drivers will prevent damage when the module is mounted incorrectly on the machine:

- Module making bad contact as it is not pushed far enough in its slot
- Module making bad contact due to damaged pin, pin on the connector is pushed inside giving intermitted contact
- Connector pin making a short circuit to grounding or another pin

The new carriage boards are compatible with the F Series with firmware MD9974 revision 37 or higher. All units with a serial number from April 2021 will have the new carriage board built in.

### How to recognize the new carriage board

The new carriage boards are easy to recognize as they have a completely new design. The board itself will have the following marking: PCB CARRIAGE **500-8901A**



## The installation procedure of the new carriage board



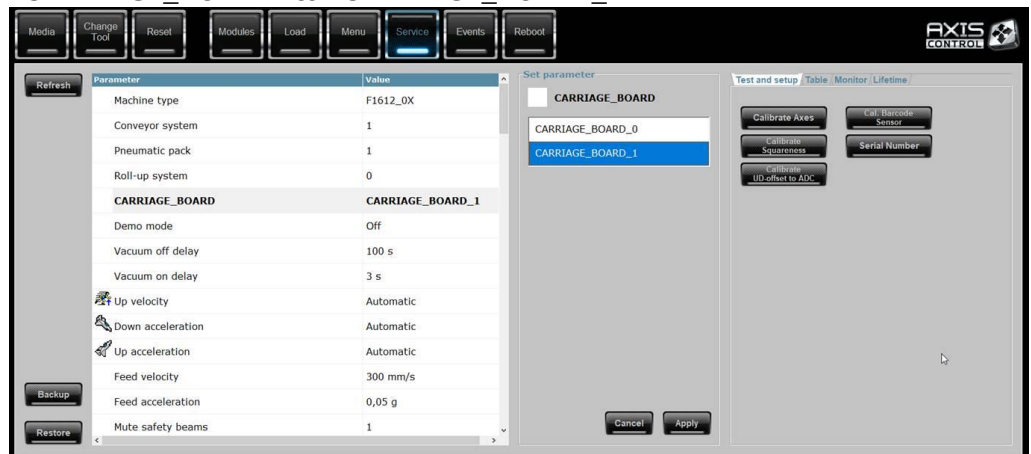
### Summa nv

Rochesterlaan 6  
8470 Gistel  
Belgium

+32 59 27 00 11  
www.Summa.com

BTW BE0456 536 537  
IBAN BE95 7360 2727 5858

1. Download latest firmware (rev 37 or higher) for the Summa website:  
<https://www.summa.com/en/support/>
2. Switch off the unit
3. Remove the old carriage board
4. Boot up the unit without the carriage board
5. Take a backup file of the unit (as safety backup)
6. Update firmware (the local file you just downloaded) - After updating, Axis Control will prompt you to Reboot
7. After Reboot start Axis Control in Service mode and change the parameter “CARRIAGE\_BOARD” to “CARRIAGE\_BOARD\_1”



8. Switch off the unit
9. Install the new carriage board and mount the modules + tools

## RMA Request for Carriage board replacement

Summa will send the new board by RMA exchange free of charge when the board is requested according to the general warranty period of 2 years on parts. Please send your request to the RMA desk together with the fault description and the serial number of the related machine. Summa will send the board upfront when you plan to make the replacement.

## The new Summa F Series firmware changes:

- |             |   |
|-------------|---|
| New Feature | Support new carriage board  |
| Issue       | <b>Unexpected reboots</b> may occur when interrupting beams on <b>3X-models</b> . |
| Issue       | Beams get interrupted <b>unexpectedly</b> on <b>2X-models</b> .                   |
| Issue       | Beam or carriage can shoot through when there is a safety issue during boot.      |

The new Summa F Series firmware can be downloaded from the Summa website:

<https://www.summa.com/en/support/software-firmware/>