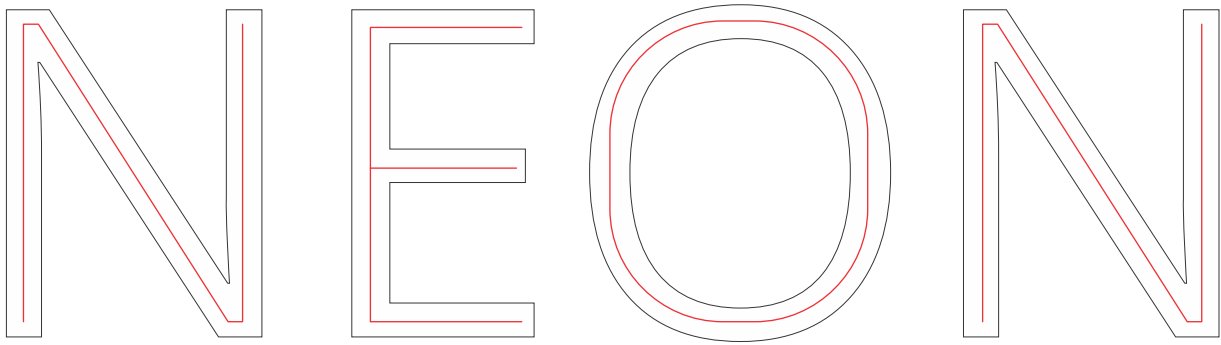
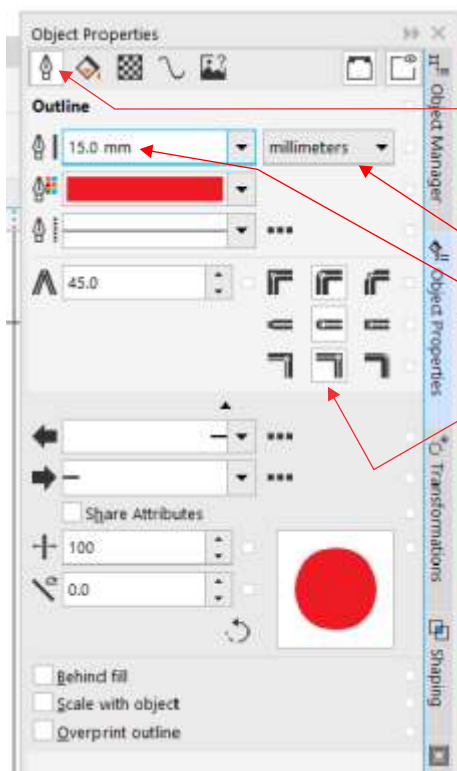
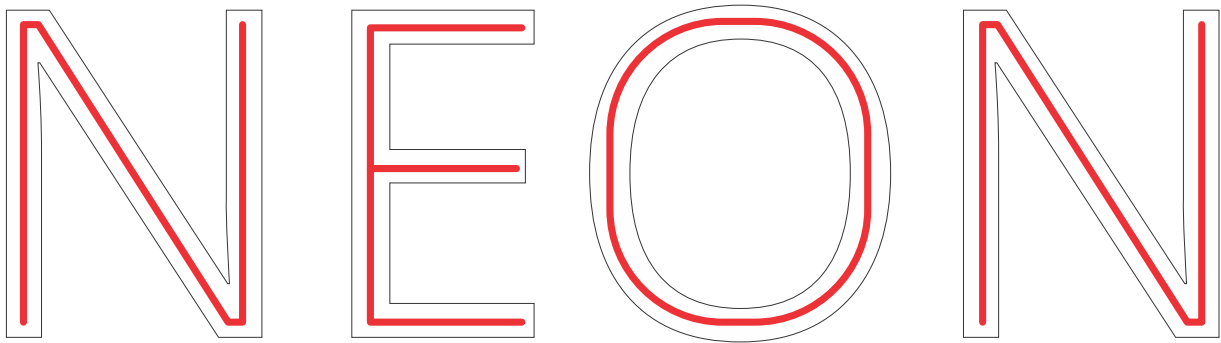


HOW TO DRAW SCALEABLE GLOWING NEON IN COREL DRAW

By Matthew B. Ota



DRAW SINGLE VECTOR (SHOWN IN RED) INSIDE EACH CHANNEL LETTER
THEN COMBINE EACH NEON VECTOR INTO ONE OBJECT



CLICK ON NEON VECTOR

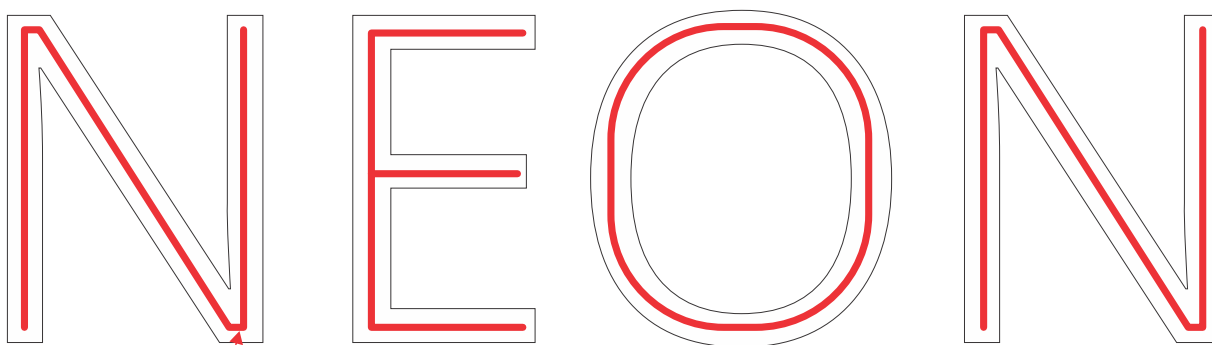
IN OBJECT PROPERTIES PEN TAB

CHANGE PEN TO MILLIMETERS

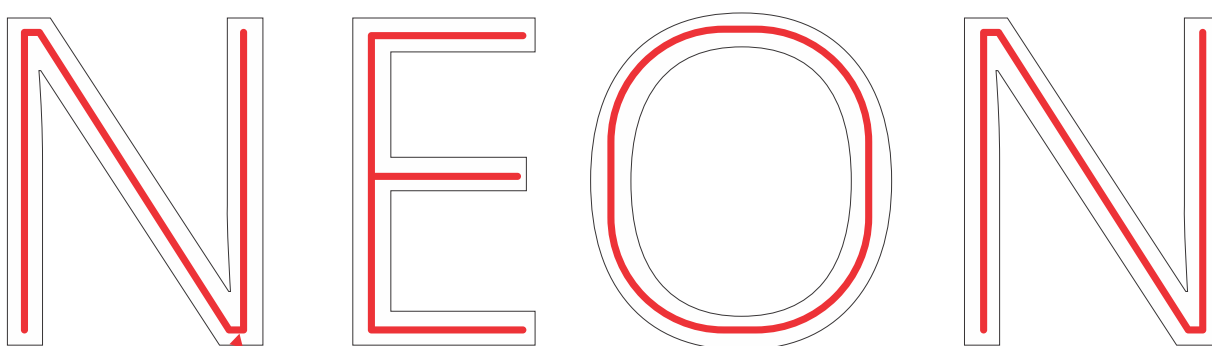
AND SET TO NEON DIAMETER

(THIS CASE IS 15mm)

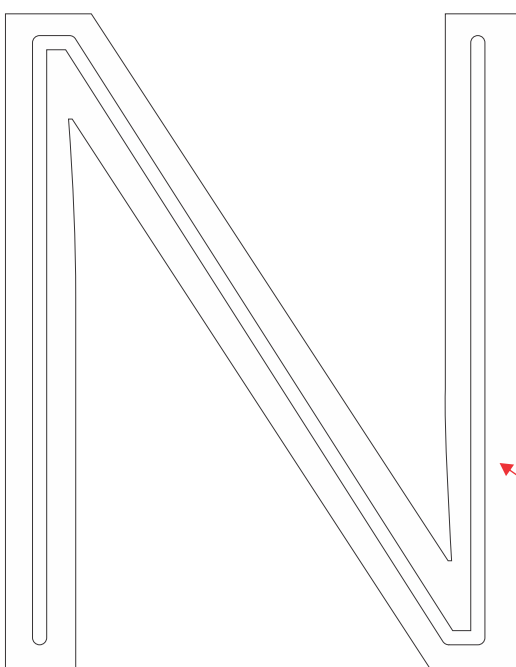
MAKE CORNERS AND ENDS ROUND



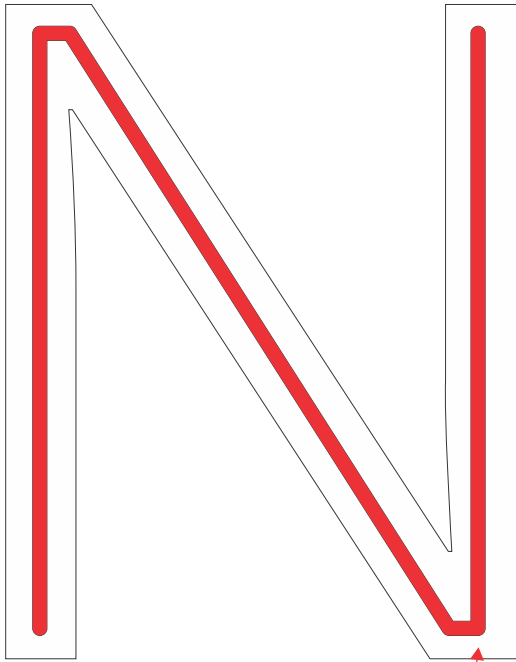
COPY NEON VECTOR TO CLIPBOARD (Ctrl+C)



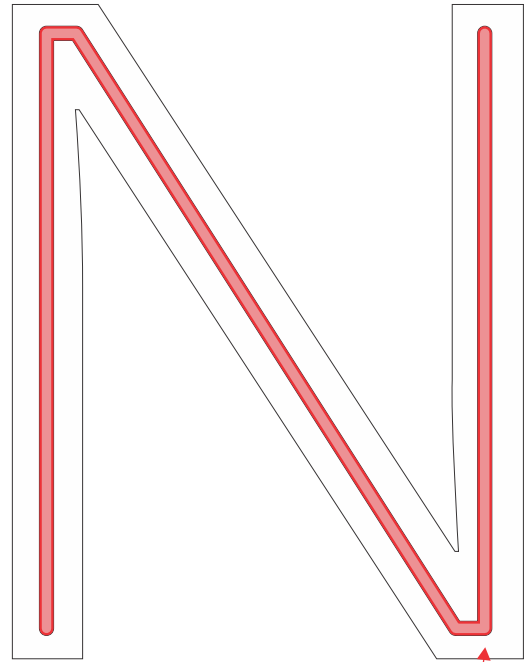
CONVERT NEON VECTOR TO OBJECT (Ctrl+Shift+Q)



FILL VECTOR WITH NO FILL,
ADD PEN OUTLINE
THIS IS A NEON OUTLINE VECTOR



PASTE VECTOR
BACK INTO DRAWING

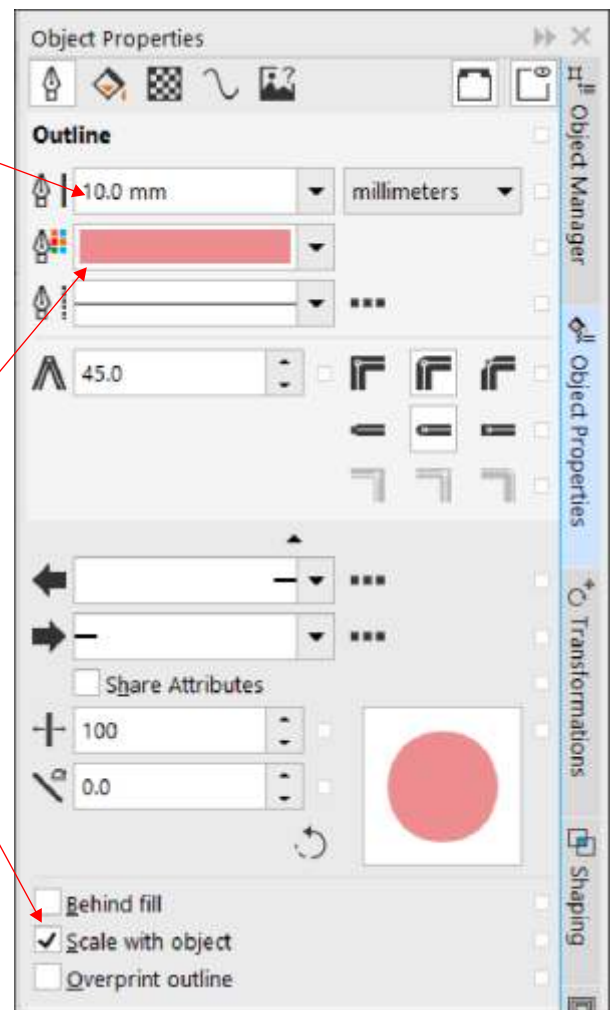


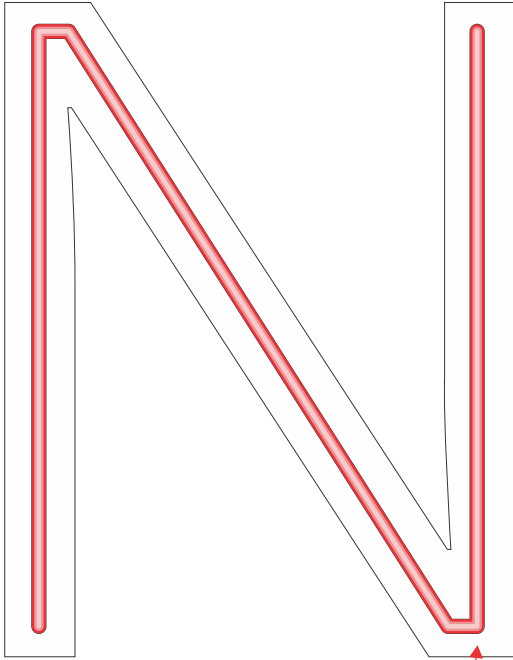
REPEAT PASTE VECTOR
BACK INTO DRAWING

CHANGE NEON TO 10 mm

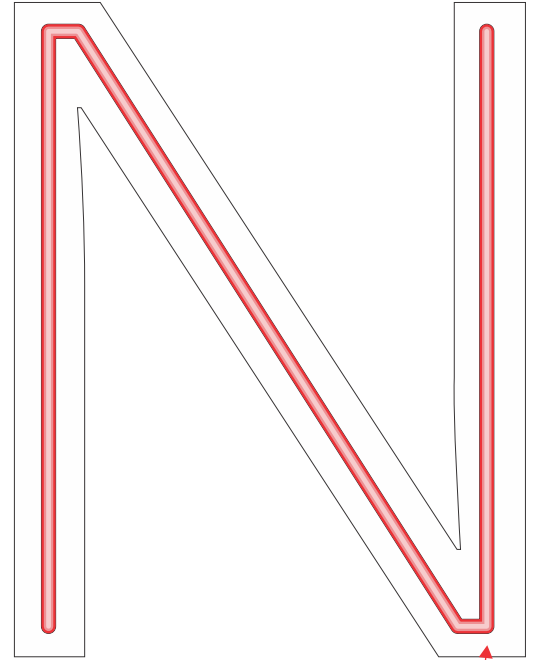
CHANGE COLOR TO A LIGHTER RED

MAKE SURE SCALE WITH OBJECT
IS CHECKED AND STAYS CHECKED

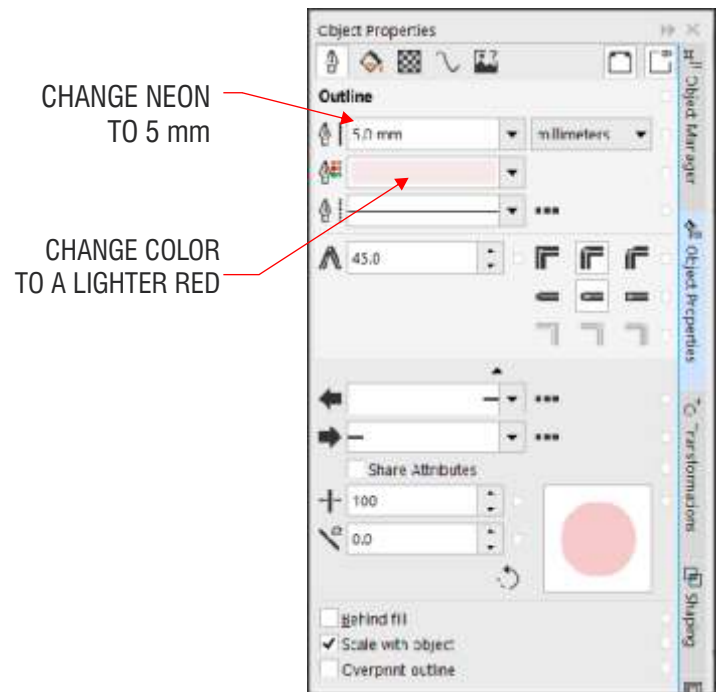
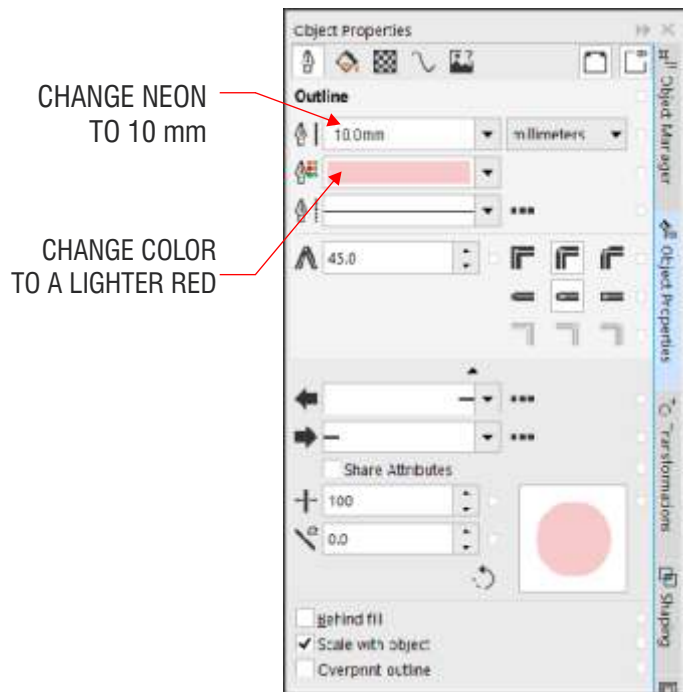


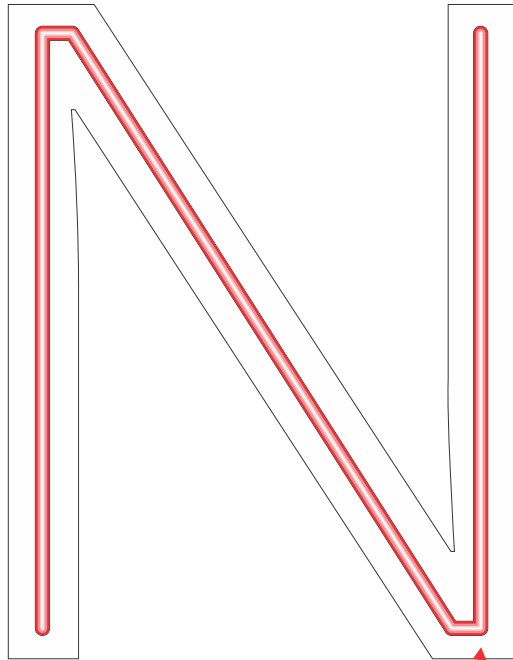


REPEAT PASTE VECTOR
BACK INTO DRAWING



REPEAT PASTE VECTOR
BACK INTO DRAWING

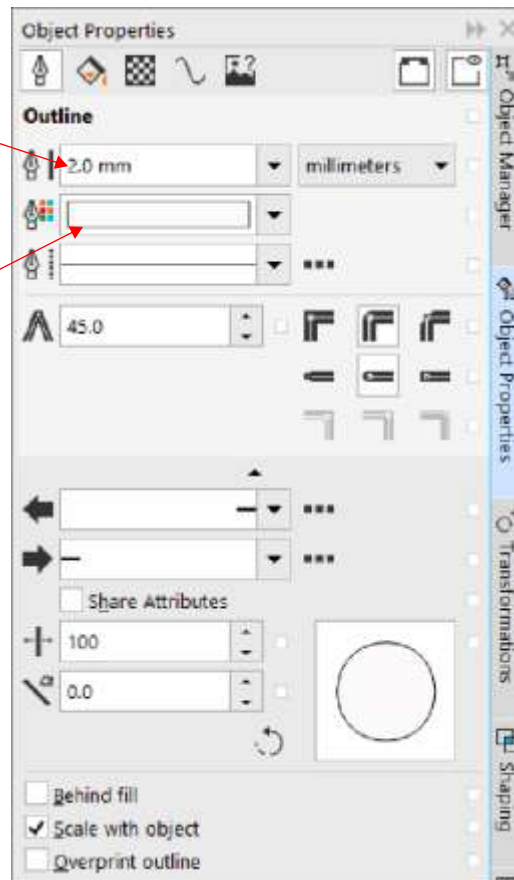


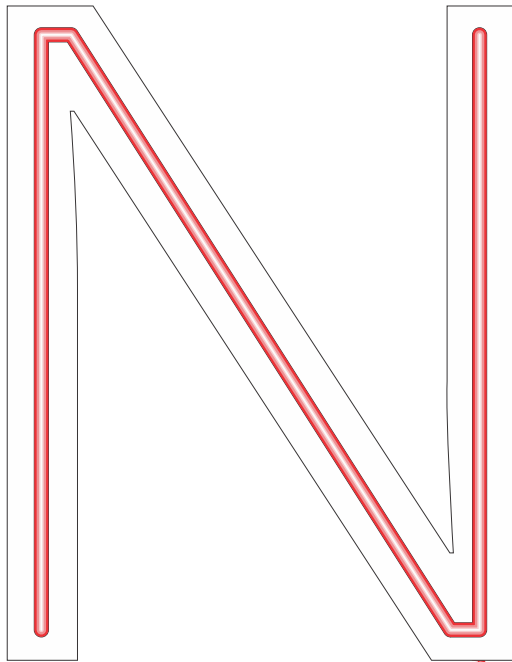


REPEAT PASTE VECTOR
BACK INTO DRAWING

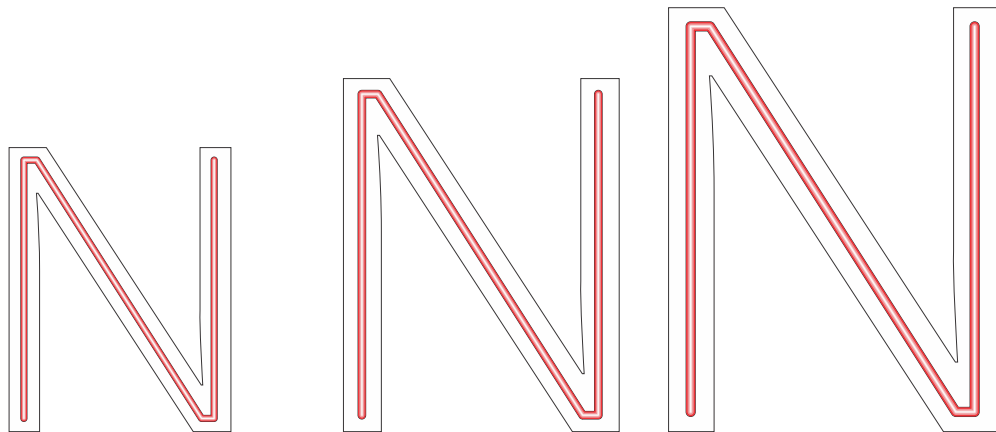
CHANGE NEON
To 2.0 mm

CHANGE COLOR
TO WHITE

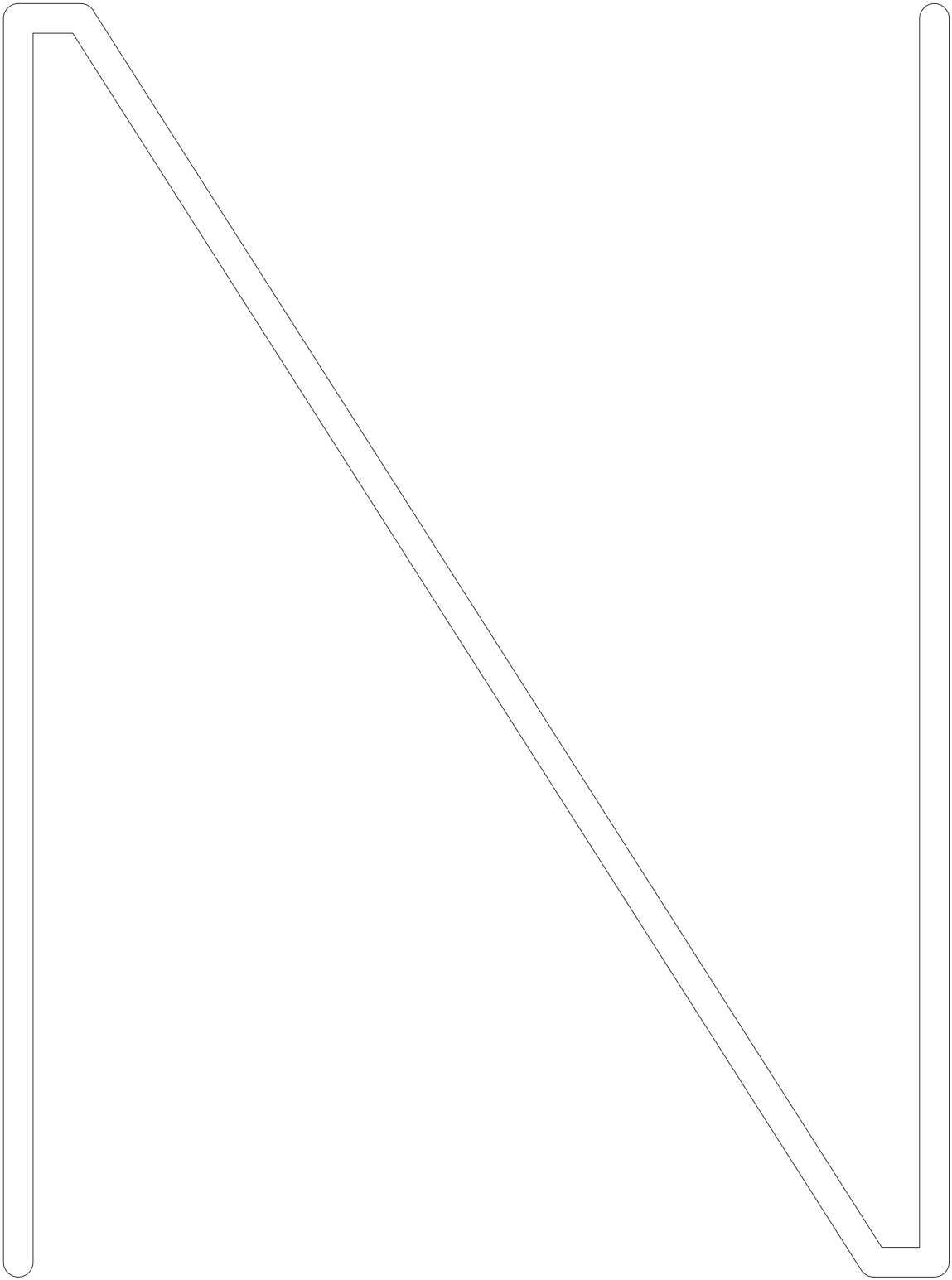




GROUP LETTERS, NEON VECTORS
AND NEON OBJECT TOGETHER



LETTERS CAN NOW BE SCALED TO ANY SIZE



NEON OUTLINE VECTOR CAN BE SCALED TO FULL SIZE
TO CREATE A PAPER NEON PEN PATTERN