



Summa service aid

From: Van Eylen Guido

Subject: Calibration

Bulletin No: 0129

Date: 04-10-2001

How to link calibration factors to a user

From version 4.2 of Summa Cutter Control on, it is possible to save an individual calibration factor per user. If the user is then changed, the calibration factor is also changed.

This is useful when working with different type of materials.

De cutter has in its memory only place for one calibration factor. So if the calibration factor is linked to the user, then the only possible way to use it, is to change user with Summa Cutter Control. The program will then automatically pick up the calibration factor that was saved on the computer and send it to the cutter while it changes the user.

Carefully follow the procedure to set up your cutter and Summa Cutter Control to use this feature.

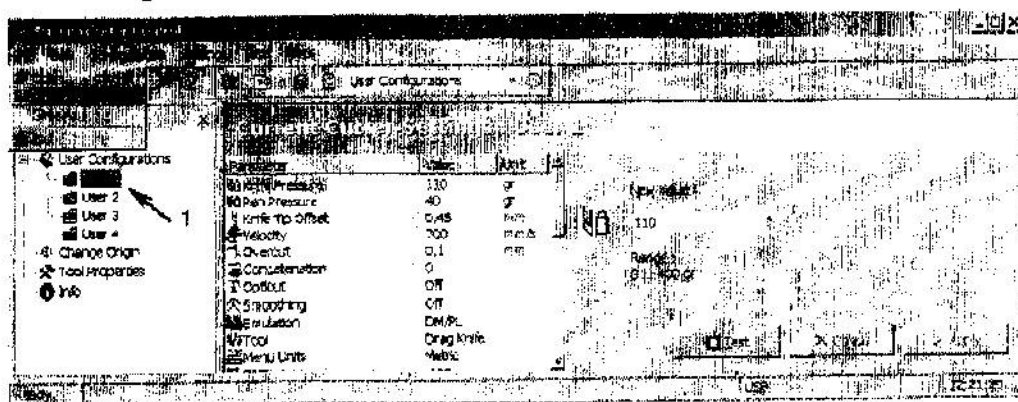
Start up Summa Cutter Control. Make sure you have a clean start-up. If you are not sure uninstall Summa Cutter Control and install it again. Make sure it looks like picture below.



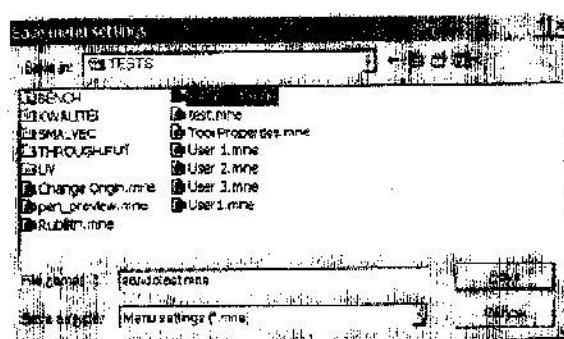
Summa Rochesterlaan 6 -B8470 Gistel Belgium
Phone: +32 59 270044 Fax: +32 59 270063
E-mail: Guido_Van_Eylen@Summa.be



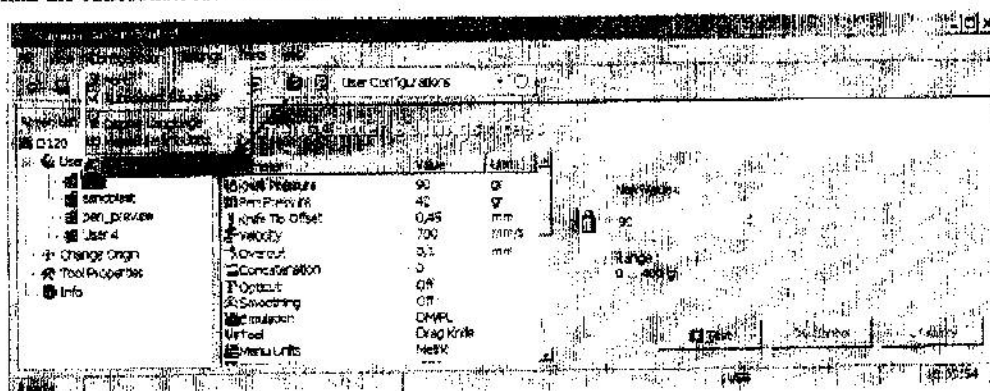
First save all the different users on your hard disk. Make sure that the cutter is switched on and that it is connected to the computer. Then click on every user separate, wait until the menu values are read from the cutter and then go to file -> save.

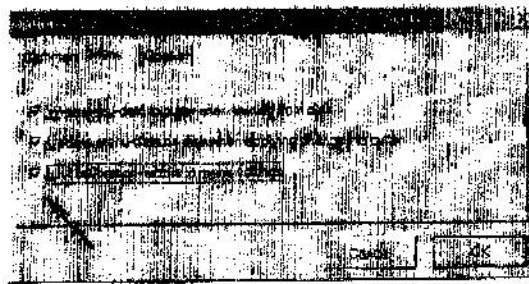


If 'save as' is chosen in stead of 'save', then it is possible to choose a file name to recognise the usage of the user better.

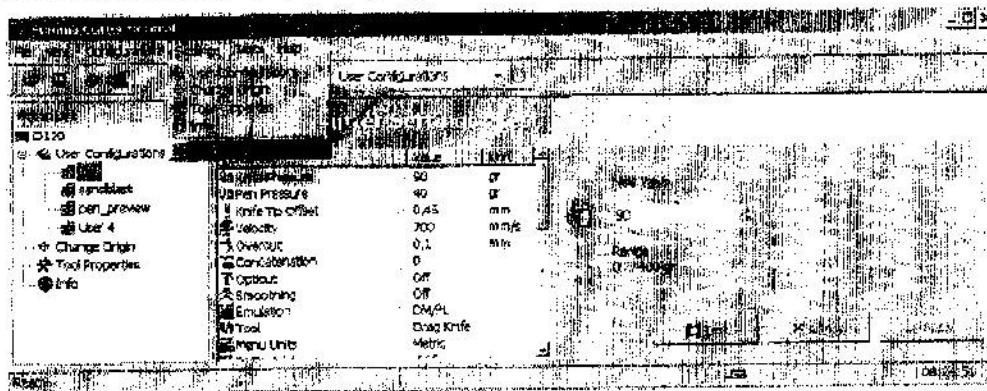


After saving all for the users (with or without name change), then go to options to set Summa Cutter Control to link the calibration factor to user.

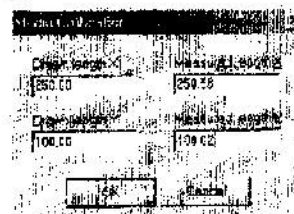
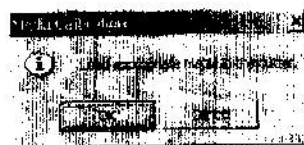




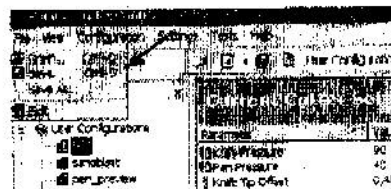
Now again go to each user and put the appropriate media in the cutter to calibrate.



Then just follow the instruction on the screen, measure and type measured values in.



Each time you have calibrated, save the info



If all four users have been calibrated, then the cutter is ready to use a different calibration factor for a different user. The calibration factor will only change if you change the user with Summa Cutter Control. If you change the user with the keypad on the cutter, the calibration factor will not change. Also if the option is set not to link calibration to user, then Summa Cutter Control can not calibrate when a user is chosen. The menu point 'calibrate' under 'settings' is not highlighted.

