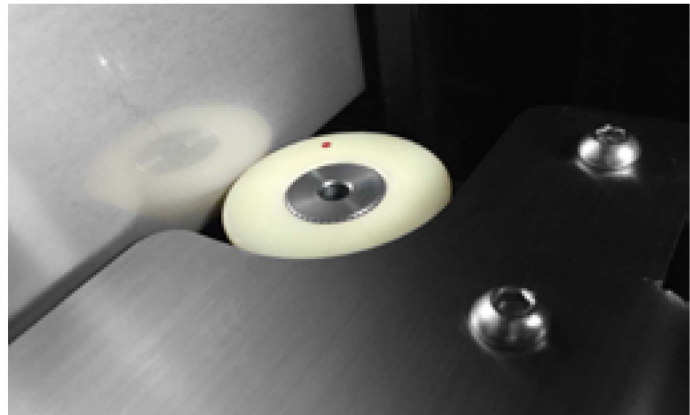


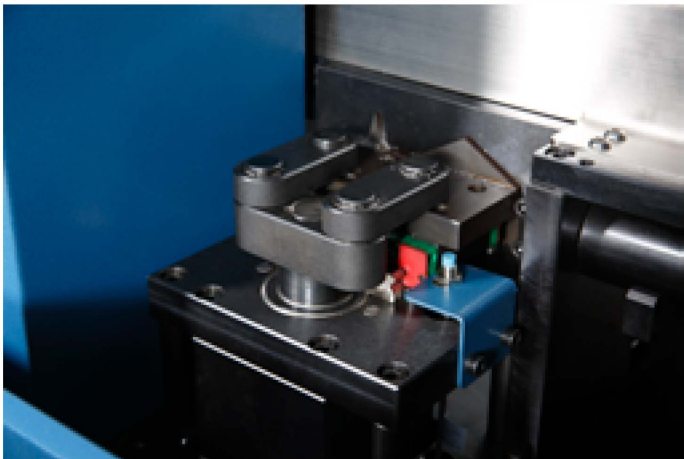
V-shaped slotting mode

Intelligent control slot depth, free setting total slot depth, single slot depth and slot numbers; Servo motor control, high precision nut driver, with the advantages of slot speed, high accuracy and constant torque; V slotting surface is smooth, without any burr. Depth is consistent. The R Angle is not obvious when angle bending. Ensuring letters with clear and beautiful outline.



Closed loop control system

All TPS bending machines have material tracking system which can real-time monitor any material stretching and slipping during bending. With this closed-loop control of material length, precise matching bended letter with panel face letter can be guaranteed.



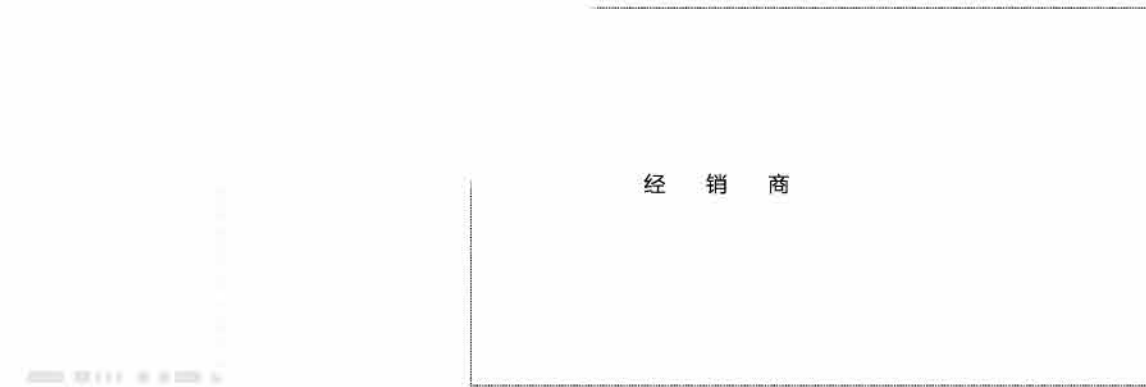
Servo motor control notching and flanging mechanism.

It uses servo motor to control notching mechanism with characters of smaller size, higher speed, more stable property, without oil contamination and low noise comparing with hydraulic notching.



Telescoping double bending bars mechanism

The core of the bending machine is arc shape effect. TPS-S1800 automatic channel letter bending machine uses servo control, high rigid gear transmission, telescoping double bending bars, bending mold quick change system with large bending torque, small interference area, no scratch surface, material thickness is adaptable, suitable for high precision, high strength of industrial signs processing.



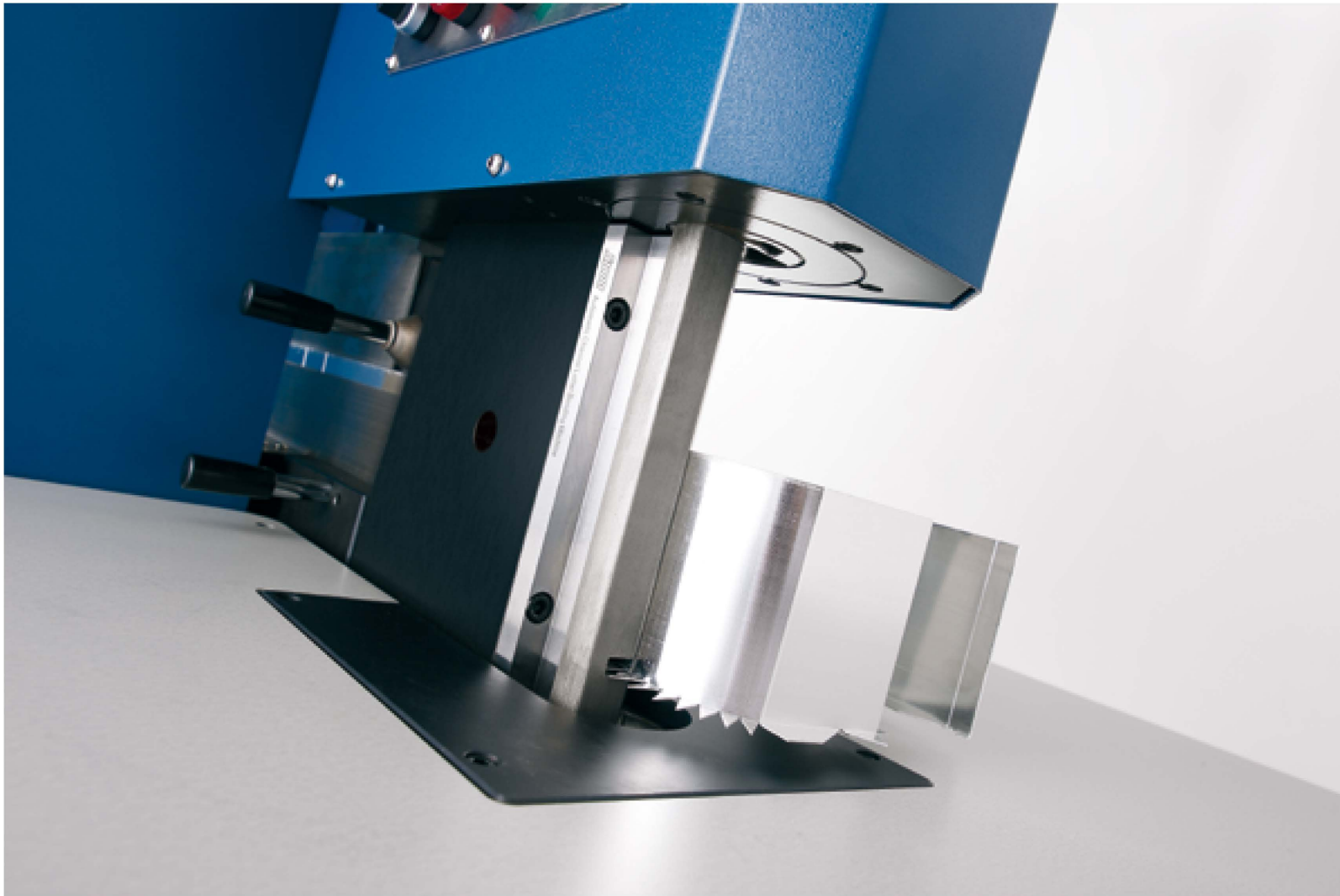
The Manufacture For Advanced Automatic Sign Bending
Machines And Sign Consumables

Technology, Profession and Service



S1800

Automatic Channel Letter Bending Machine



TPS CNC Channel Letter Bending Machine is
The First Choice For Industrialized Making Signs.



Plate material bending mold

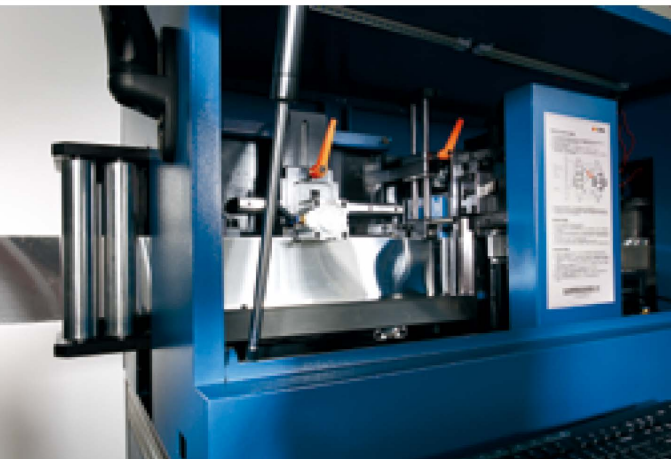
Aluminium profiles bending mold

Bending tool quick-change system:

In order to get high quality bending for different material, TPS company researched and developed bending tool quick-change system to realize independent quick change for slotting and bending for plate metal material and notching and flanging for flat aluminum material to ensure high accuracy bending for two different processing types.

More tool rod bending system:

On the basis of alternating double bending bars system, it increases one bending bar for notching of aluminum flat material. It can realize function types changing freely between slotting and bending for flat material and notching, flanging and bending for aluminum flat material. Bending forming degree is greatly increased.



Reel type feeding:

The front roller flattening mechanism, it can flatten materials effectively in advance, to avoid jam due to uneven materials.



Alternating clamping feeding mechanism

Slide rail type pressure device and the plate guide chute, to avoid the phenomenon of arch material and ensure smooth feeding process. Alternating clamping feeding mechanism includes servo motor controlling and double screw nut driver, with large torque, which has high precision and high speed transmission performance to ensure actual feeding accuracy to $\pm 0.1\text{mm}$ and to eliminate physical skid phenomenon due to the roller pressure feeding.

设备简介/Brief Instraction:

TPS-S1800全自动弯字机基于S8900机型的平台上增加了一组剪齿折边功能模块，采用多刀杆折弯系统及模具快换系统对材料进行精密折弯，不仅具备S8900全自动弯字机的所有功能外，同时还具有对平面铝卷自动剪齿与折边功能，是高档广场景观字、不锈钢字、冲孔字、树脂字、巨型发光字周边的首选高端设备。

TPS-S1800 automatic channel letter bending machine is increased notching and flanging mold developed based on our TPS-S8900 automatic super letter bending machine. It is with high accuracy bending with the more bending bar system and quick-change bending mold system. It is not only with all functions of model S8900, but also it can make notching and flanging automatically for flat aluminum coil. It is the high-end bending equipment for the first selection especially suitable for the high letters(usually found in square and plaza), stainless steel letters, punching letters, resin letters and giant glowing letters, etc.

设备优势/Advantage of the equipment:

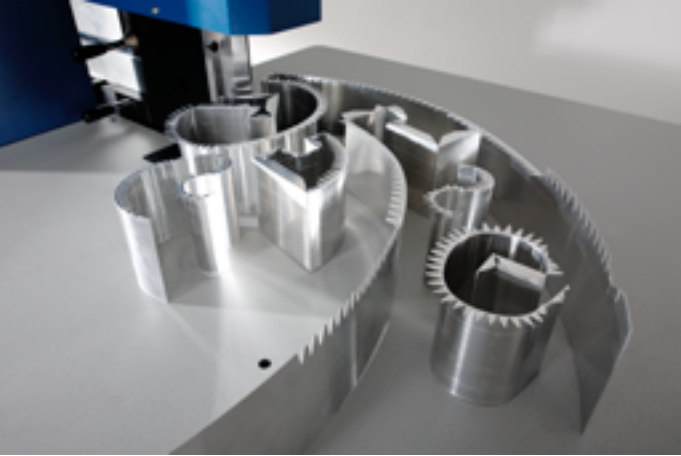
- 独有的伸缩交替式折弯模式，降低折弯划伤、减少折弯过程干涉、提高折弯力矩，实现高精度折弯；
Unique bending type of telescopic alternative bending-greatly reduces the bending scratch, avoids interference in the bending process and substantially increases the bending torque.
- 高精度，内置送料长度的闭环检测，确保加工成品与原始文件总长偏差<0.1mm，且保证同文件重复制作的一致性；
High precision-equipped with closed loop testing device for testing feed length inside, assuring the total length deviation bending less than 0.1mm between the product and original document and also assuring the consistency of manufacturing the same document repetitively.
- 成型度高，与各类精密设备切割的面板重合度达98%以上；
High degree of forming-the coincidence degree reaches as high as 98% with the flat letter that bended by many other sort of precise equipments.
- 开槽成本低，原装德国进口高硬度专用不锈钢开槽刀具，刀具使用成本低于0.02元/槽；
Low slotting cost-imported from German, the stainless-steel-made slotting cutter is good at cutting high hardness material and its using cost is low at RMB0.02 per groove.
- 独有的交替式夹持丝杠送料方式，具有送料速度快、精度高、无压痕等优点。
-high feeding speed- the unique alternative clamping synchronous feeding type can reach ist highest speed at 20M/min and makes it impossible of material rolling and skidding.
- 采用数控轴控制开槽深度，满足不同材料及厚度的开槽进刀需求；
Precise and controlled groove depth-it controls the depth of groove by numerical control axis and this meets different thickness.
- 采用伺服高速剪齿、气动直角折边，剪齿无毛边。
Servo motor for notching function with high speed, pneumatic flanging for right angle and no burr with notching.
- 折弯回弹智能补偿，内置泰诺圣集多年研发经验开发的的回弹智能补偿系统，对各种材料都能确保成型精度；
Intelligent compensation for bending rebound- inside set with intelligent compensation system by TPS based on their sevral years of P&D experience. Due to this system, it can assure forming precision for all kind of material.
- 折弯过程智能化，通过智能干涉检查，减少在弯字过程中出现的干涉碰撞；
Intelligent bending process - it can reduce interference and collision in bending process by the intelligent inspection system.
- 终身享有操作软件免费升级；
Operating software updates free all life.
- 专业、高效、周到的全程服务。
Professional, high-efficient and considerate full service.

软件支持 / Software support

DXF/PLT文件输入，支持CAD、TYPE3、CRELDRAW、ILLUSTRATOR等。
DXF/PLT files input, support CAD, TYPE3, CRELDREW, ILLUSTRATOR, etc.



不锈钢材料加工
Stainless steel processing



铝卷材料加工
Aluminum coil processing

设备主要技术参数 / Technical Paremeter

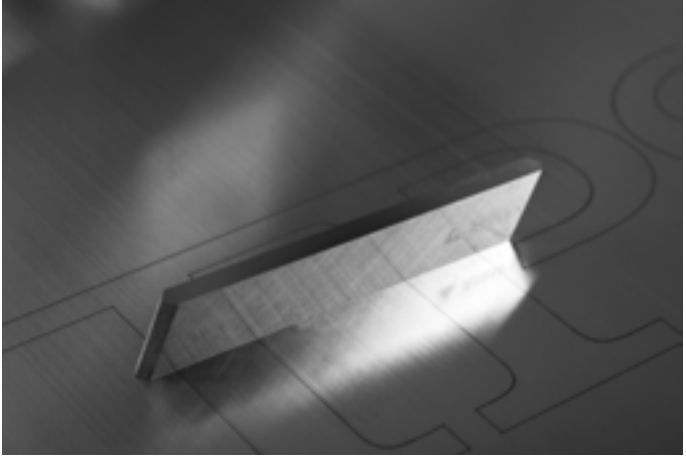
电源 Power supply:	AC200V
整机功率 Power :	4.0KW
空气压缩 Compressed air:	0.4—0.6MPa
控制轴数量 Control axis quantity :	5轴 (5 axis)
最小折U形 Min. Bending radius:	R7mm
最小内外角距离 Min. distance between interior angle and exterior angle:	4.5mm
开始折弯距离 Bending distance from start:	3mm
适用材料 Applied Material:	不锈钢、镀锌板、铝卷（可以剪齿折边） Stainless steel,galvanized sheet, Aluminium coil
材料厚度 Material thickness:	0.6~1.0mm
加工高度 Processing height:	不锈钢、镀锌板 Stainless steel, Galvanized sheet, (20~175mm) 铝卷 Aluminium coil (50~175mm)
送料方式 Material feeding method:	高精双丝杠交替式送料 (Alternating double screw rails feeding)
剪齿方式 Notching type:	伺服控制模具冲压 C ontrolled by servo motor
剪齿角度 Notching angle:	30° / 120°
折边方式 Flanging type:	气动直角折边 Pneumatic flanging for right angle
折边宽度 Flanging width:	14mm
伺服电机 Servo Motor:	4PCs
步进电机 Step motor:	1PCs
设备质量 N.W. / G.W.:	800Kgs / 900Kgs
外箱尺寸 Dimension:	2290(L)×860(W)×1560(H)mm



伺服控制模具冲压剪齿机构



剪齿料渣收集盒
Material fragment collection box



进口硬质白钢刀
Imported hard white steel

