

JV4 Series
COLOR INKJET PLOTTER

MECHANICAL DRAWING

Ver 1.9

MIMAKI ENGINEERING CO., LTD.

TKB Gotenyama Building, 5-9-41, Kitashinagawa, Shinagawa-ku, Tokyo 141-0001, Japan

Phone: +81-3-5420-8671 Fax: +81-3-5420-8687

URL: <http://www.mimaki.co.jp>

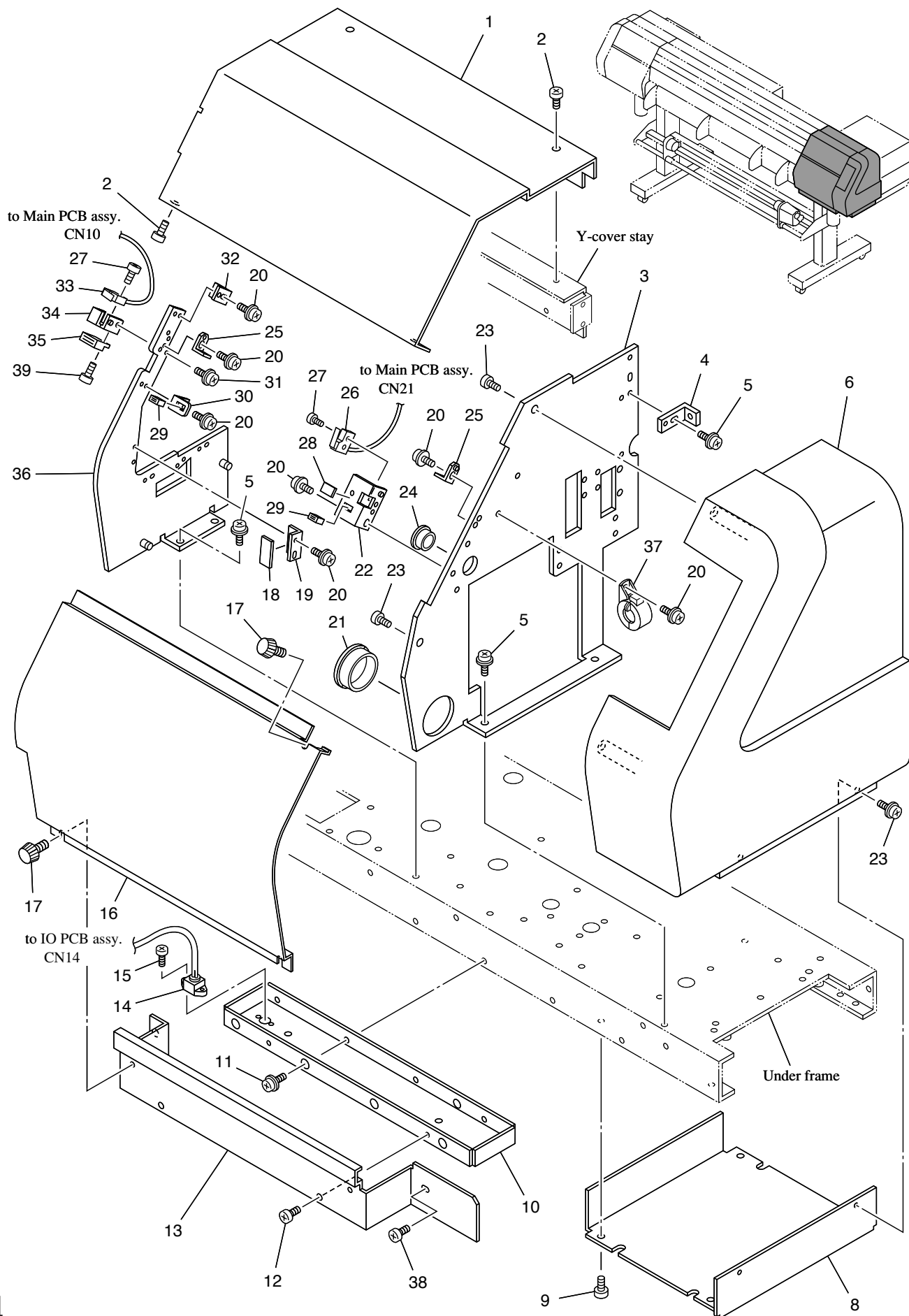
E-mail: trading@mimaki.jp

D500173-19

TABLE OF CONTENTS

COVER ASSY. - 1/3	4
COVER ASSY. - 2/3	6
COVER ASSY. - 3/3	8
KEYBOARD ASSY.....	10
FRAME ASSY. - 1/2	12
FRAME ASSY. - 2/2	14
Y-BAR ASSY.....	16
LEG ASSY.....	18
X-DRIVE ASSY.....	20
Y-DRIVE ASSY.....	22
SLIDER ASSY.....	24
CLAMP ASSY. - 1/2	26
CLAMP ASSY. - 2/2	28
HEAD ASSY. - 1/2	30
HEAD ASSY. - 2/2	32
CARTRIDGE ASSY.....	34
STATION ASSY. - 1/2	36
STATION ASSY. - 2/2	38
ROLL ASSY. (JV4-130/160)	40
ROLL ASSY. (JV4-180)	42
TAKE-UP DEVICE ASSY.....	44
WASTE INK TANK ASSY.....	46
ELECTRICAL UNIT ASSY. - 1/2	48
ELECTRICAL UNIT ASSY. - 2/2	50

COVER ASSY. - 1/3

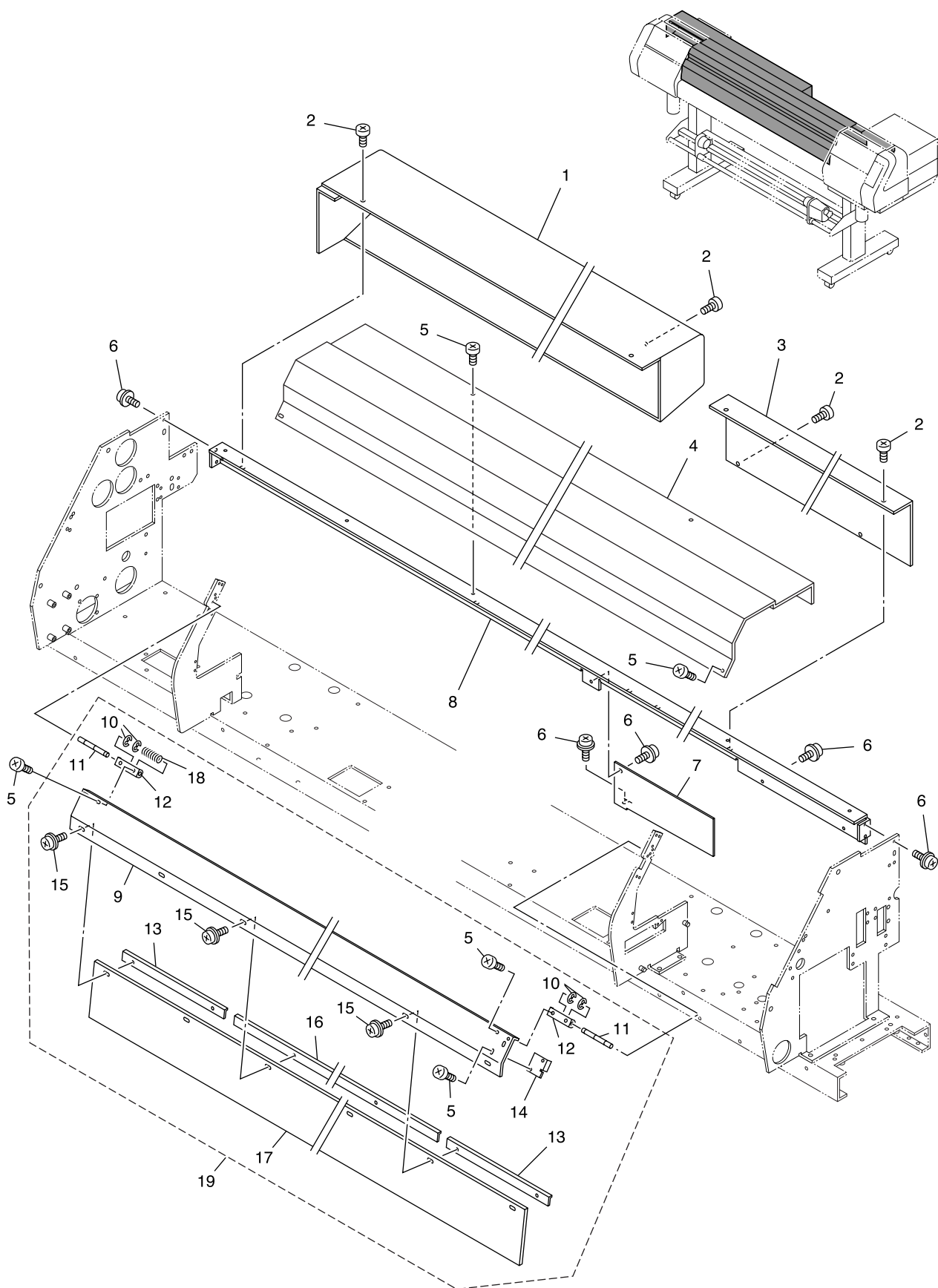


No.	Service Codes	Part codes	Name of part	Remarks	Q			R	P	M
					130	160	180			
1		M503483	YR-cover		1	<--	<--			
2			Screw	B3 x 6 Ni	4	<--	<--			
3		M503475	Right Side plate		1	<--	<--			
4		M503558	Electrical unit angle		1	<--	<--			
5			Screw	P4 x 8 SMW	5	<--	<--			
6		M601021	Righr cover		1	<--	<--			
7		Not used.								
8		M503522	Under cover R		1	<--	<--			
9			Screw	B4 x 6 Black	4	<--	<--			
10		M503481	SR-cover bracket 2		1	<--	<--			
11			Screw	P3 x 6 SMW	4	<--	<--			
12			Screw	B3 x 6 Black	2	<--	<--			
13		M503480	SR-cover bracket 1		1	<--	<--			
14		E102016	Take-up device junction cable assy.		1	<--	<--			
15			Screw	B2 x 6 Black	2	<--	<--			
16		M503479	SR-cover		1	<--	<--			
17			Face screw	Urea N1-N3,L=8	3	<--	<--			
18		M700283	Cover cushion D		1	<--	<--			
19		M503489	Front cover D catch bracket		1	<--	<--			
20			Screw	P4 x 6 SMW Round-S	8	<--	<--			
21			Bushing	TB-3545	1	<--	<--			
22		M503486	SR-stay R		1	<--	<--			
23			Screw	B4 x 10 Ni	4	<--	<--			
24			Bushing	TB-1520	1	<--	<--			
25		M503487	SL-stay		2	<--	<--			
26		E102144	Maintenance cover sensor assy.		1	<--	<--			
27			Screw	B2 x 8	4	<--	<--			
28		M700282	Cover cushion U		1	<--	<--			
29			Magnetic catches	TL-248	2	<--	<--			
30		M503485	SR-stay L		1	<--	<--			
31			Screw	P3 x 8 SMW	1	<--	<--			
32		M503465	Y-cover angle		1	<--	<--			
33		E102143	Cover sensor assy.		1	<--	<--			
34		M503488	Front cover switch bracket		1	<--	<--			
35			Magnetic catches	TL-105S	1	<--	<--			
36		M503519	Sub side plate R assy.		1	<--	<--			
37			Troidal ferrite clamp	TFCK-25-15-12	1	<--	<--			
38			Screw	B4 x 8 Black1	2	<--	<--			
39			Screw	B3 x 5 Black	2	<--	<--			

Q:Quantity used R:Recommended part P:Supply quantity

M:(Changed point from Mechanical Drawing previous version):Added part “A”, Deleted part “D”, Changed part “C”

COVER ASSY. - 2/3

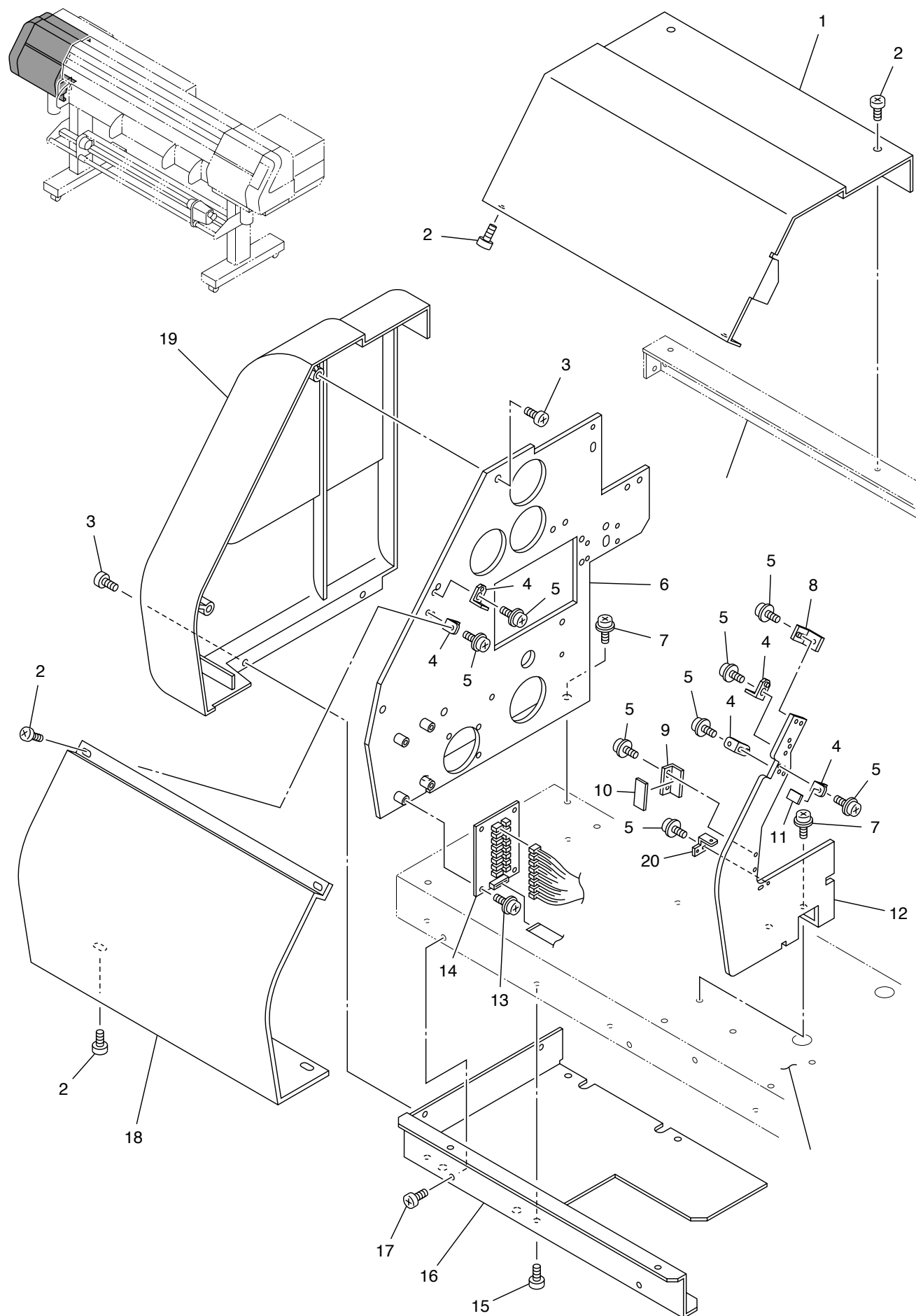


[illegible]

Q:Quantity used R:Recommended part P:Supply quantity

M:(Changed point from Mechanical Drawing previous version):Added part “A”, Deleted part “D”, Changed part “C”

COVER ASSY. - 3/3

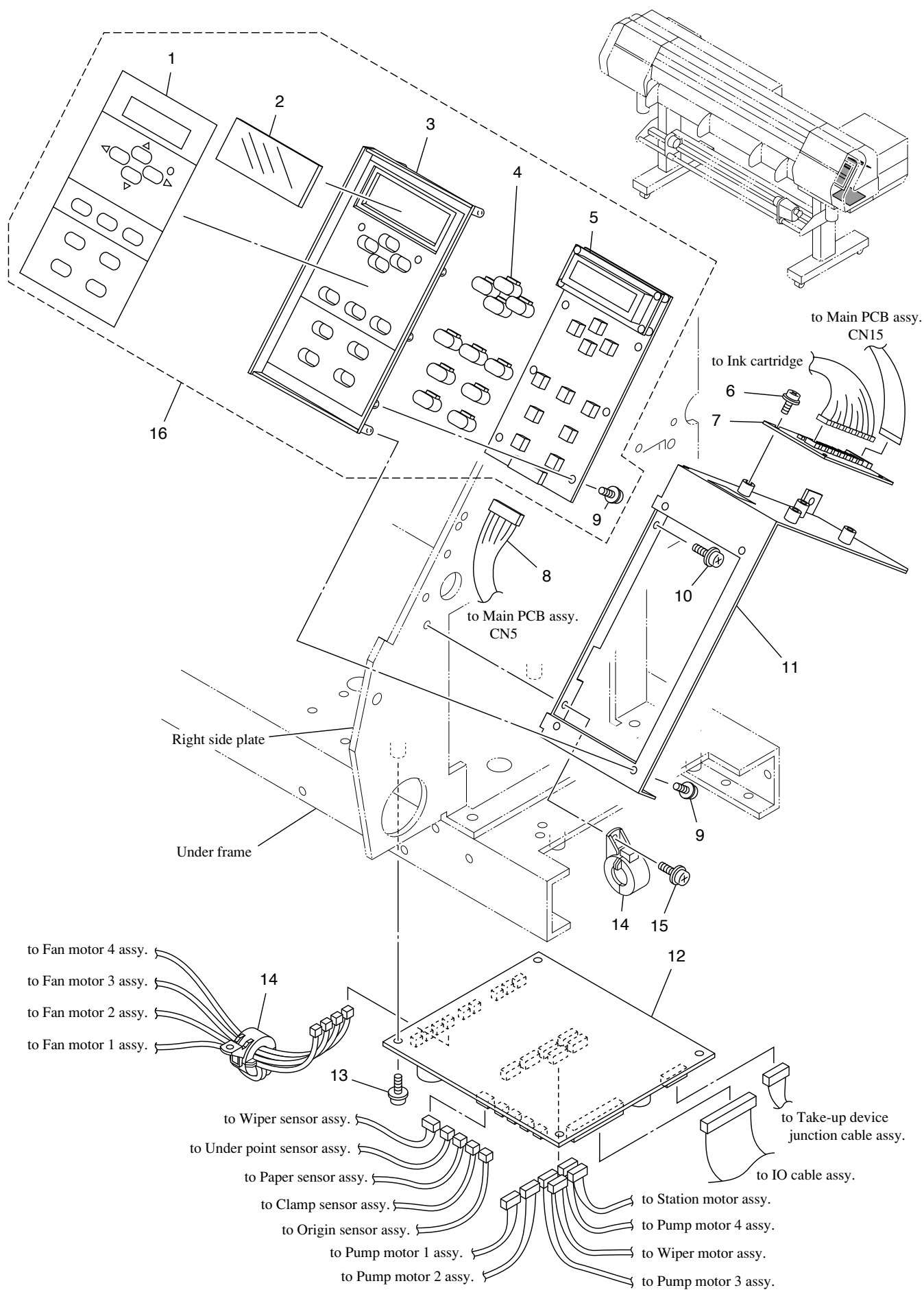


[illegible]

Q:Quantity used R:Recommended part P:Supply quantity

M:(Changed point from Mechanical Drawing previous version):Added part “A”, Deleted part “D”, Changed part “C”

KEYBOARD ASSY.

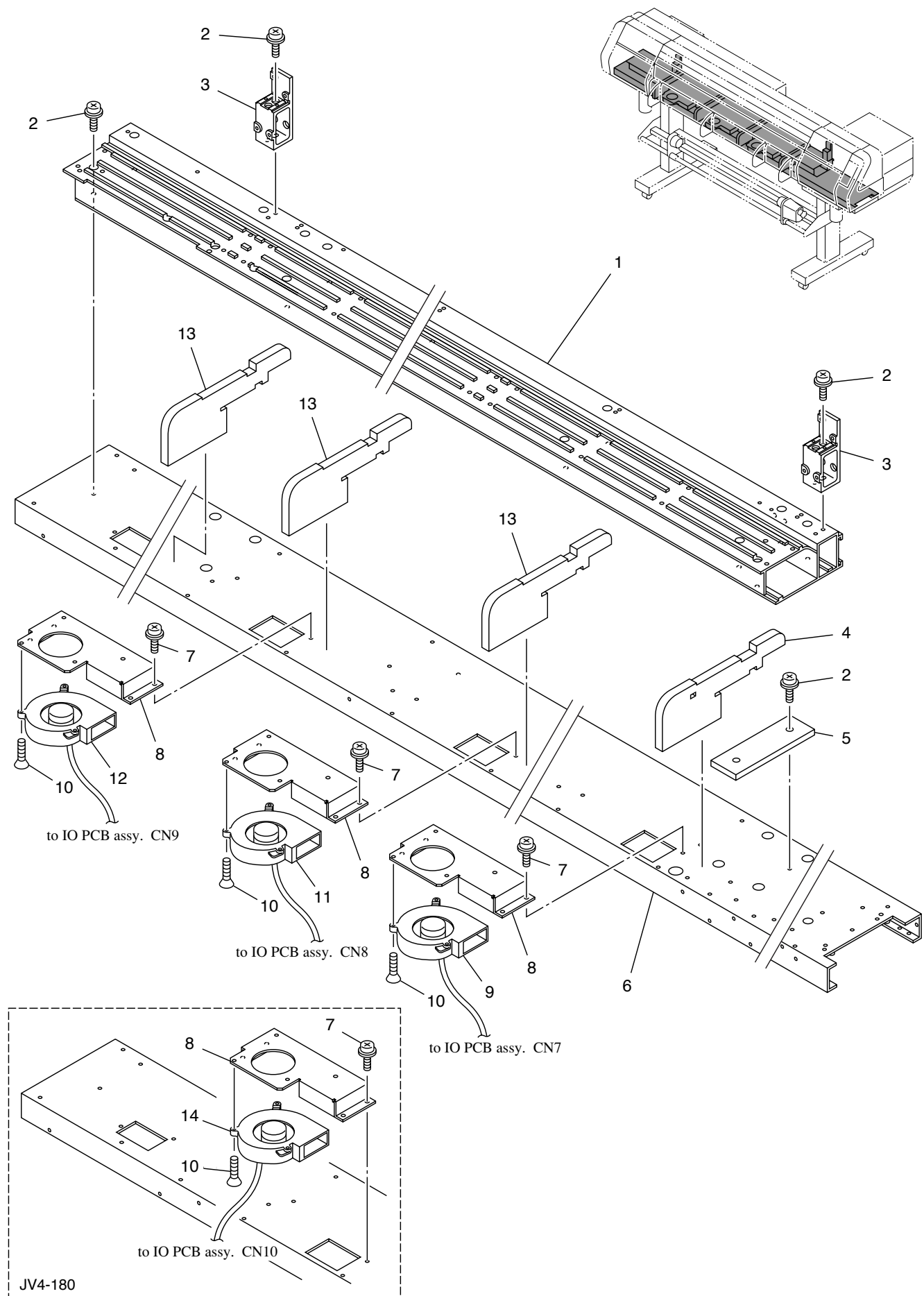


[illegible]

Q:Quantity used R:Recommended part P:Supply quantity

M:(Changed point from Mechanical Drawing previous version):Added part “A”, Deleted part “D”, Changed part “C”

FRAME ASSY. - 1/2

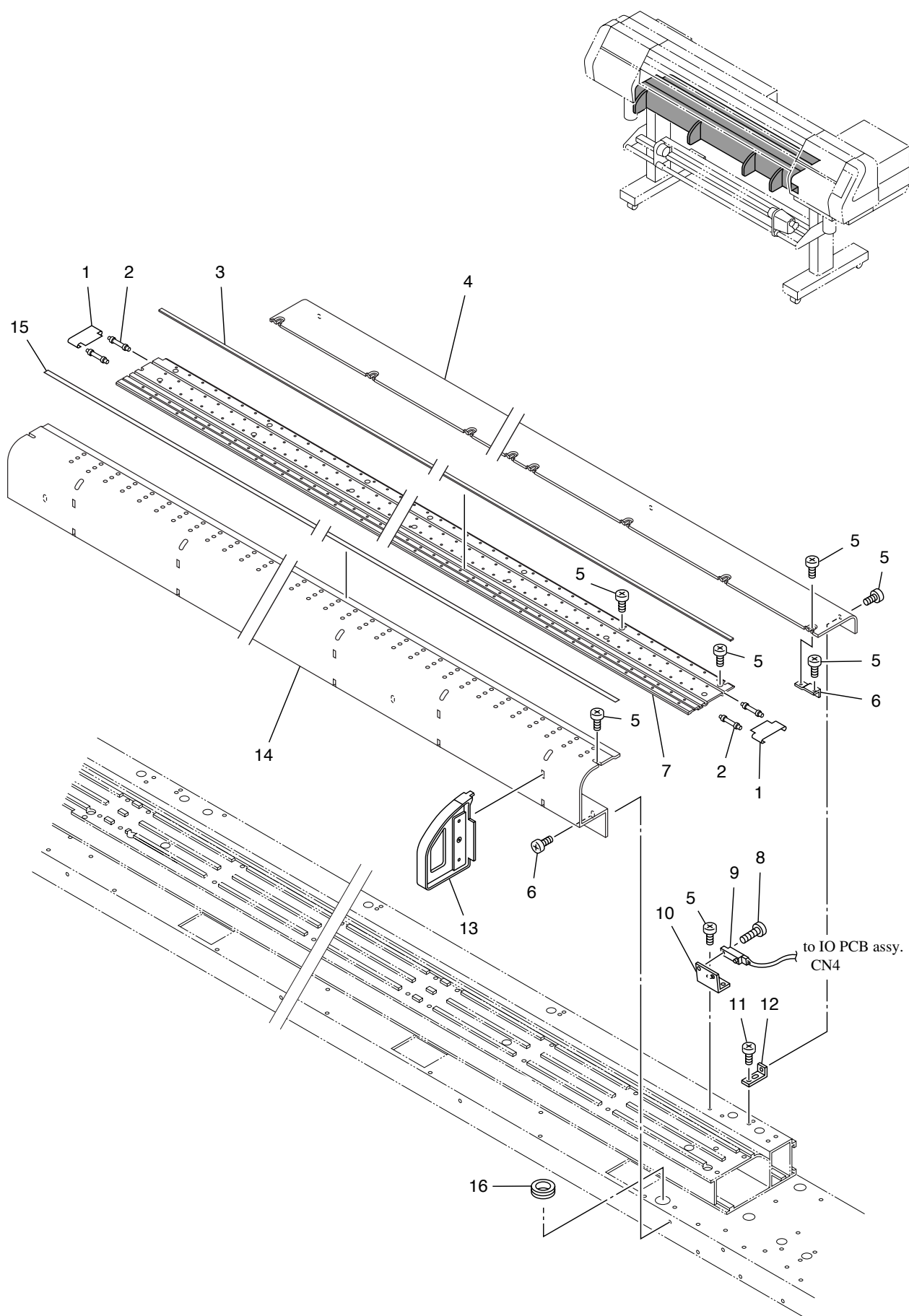


[illegible]

Q:Quantity used R:Recommended part P:Supply quantity

M:(Changed point from Mechanical Drawing previous version):Added part “A”, Deleted part “D”, Changed part “C”

FRAME ASSY. - 2/2

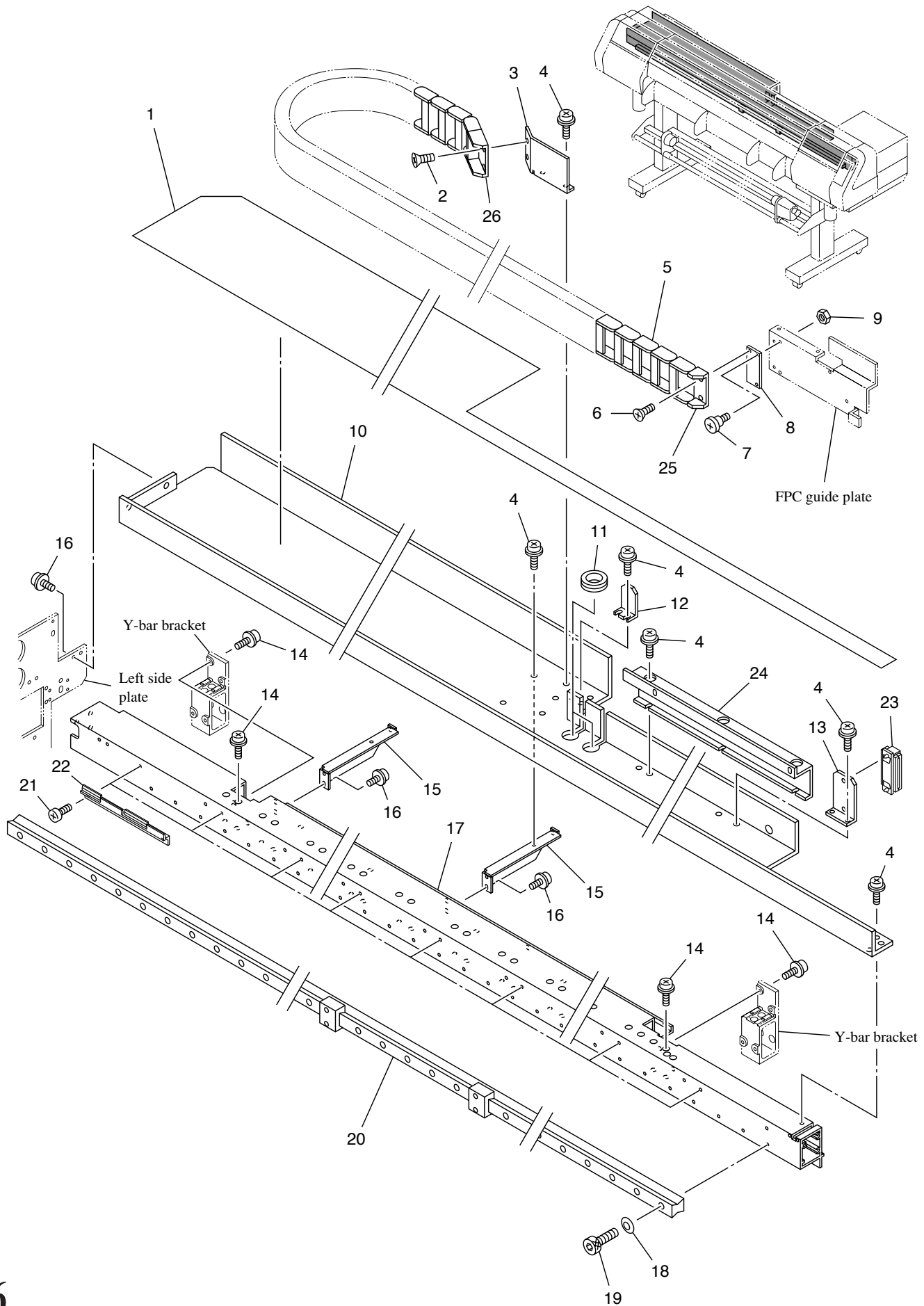


[illegible]

Q:Quantity used R:Recommended part P:Supply quantity

M:(Changed point from Mechanical Drawing previous version):Added part “A”, Deleted part “D”, Changed part “C”

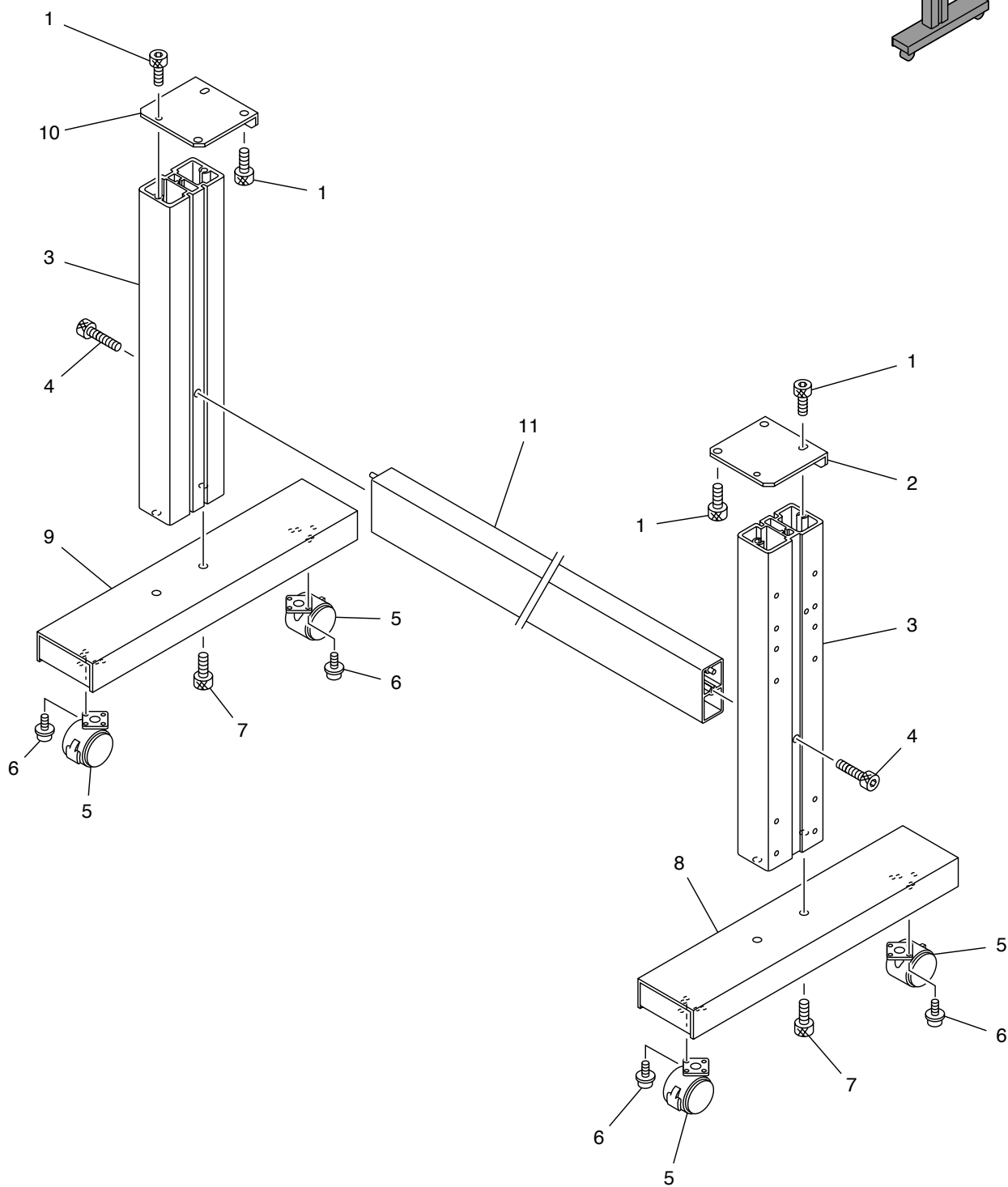
Y-BAR ASSY.



No.	Service Codes	Part codes	Name of part	Remarks	Q			R	P	M
					130	160	180			
1		M902668	Bear guide-film 130		1	0	0			
		M902676	Bear guide-film 160		0	1	0			
		M902794	Bear guide-film 180		0	0	1			
2			Screw	F3 x 5 Ni	1	<--	<--			
3		M503417	Bear base		1	<--	<--			
4			Screw	P3 x 6SMW	10	<--	<--			
5		M004654	Bear 130 Joint 42		1	0	0			
		M004655	Bear 160 Joint 48		0	1	0			
		M004656	Bear 180 Joint 53		0	0	1			
6			Screw	F3 x 5 Ni	1	<--	<--			
7		M400140	Belt screw		2	<--	<--			
8		M503596	Bear holder		1	<--	<--			
9			Nut	N-4	2	<--	<--			
10		M503391	Bear guide 130		1	0	0			
		M503416	Bear guide 160		0	1	0			
		M503598	Bear guide 180		0	0	1			
11			Grommet	C-30-NG-79-N	2	<--	<--			
12		M503388	FPC holder		2	<--	<--			
13		M503387	FPC clamp bracket		1	<--	<--			
14			Screw	P4 x 12 SMW	8	<--	<--			
15		M503458	Bear guide stay		2	<--	<--			
16			Screw	P3 x 8 SMW	6	<--	<--			
17		M300717	Y-bar 130		1	0	0			
		M300723	Y-bar 160		0	1	0			
		M300754	Y-bar 180		0	0	1			
18			Cap Spring	4L	34	40	46			
19			Hexagon socket head cap screw	CS3 x 15	34	40	46			
20		M800490	LM guide 130		1	0	0			
		M800571	LM guide 160		0	1	0			
		M800590	LM guide 180		0	0	1			
21			Screw	B3 x 6 Black	20	22	26			
22		M601077	Scale holder		10	11	13			
23			Block core	EFC-40-S	1	<--	<--			
24		M503788	FPC earth plate		1	0	0			
		M503789	FPC earth plate		0	1	0			
		M503790	FPC earth plate		0	0	1			
25			Runner flex flange (hole)	06.64.1	1	1	1			
26			Runner flex flange (pivot)	06.64.2	1	1	1			

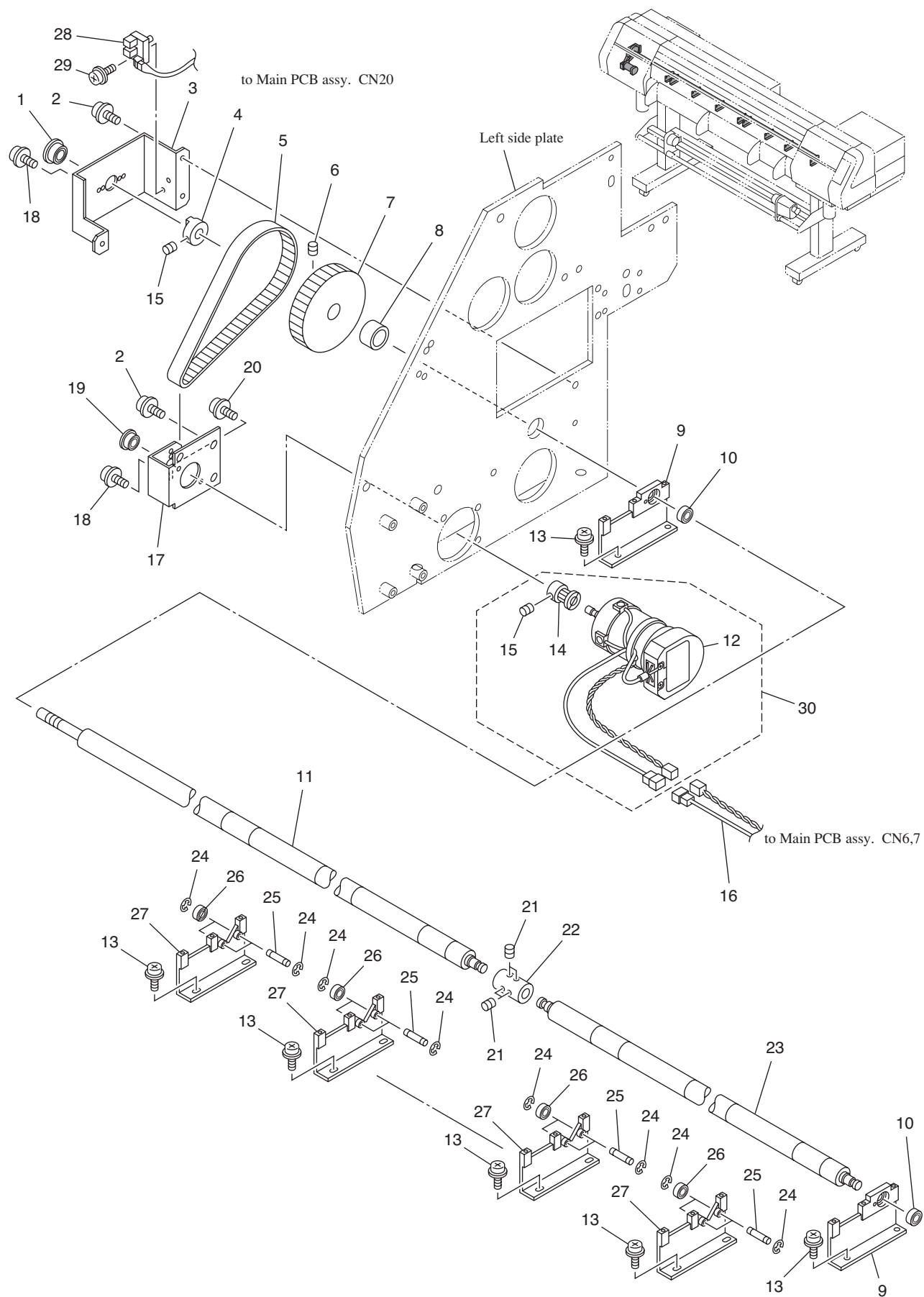
Q:Quantity used R:Recommended part P:Supply quantity

M:(Changed point from Mechanical Drawing previous version):Added part "A", Deleted part "D", Changed part "C"



Q:Quantity used **R:Recommended part** **P:Supply quantity**
M:(Changed point from Mechanical Drawing previous version):Added part “A”, Deleted part “D”, Changed part “C”

X-DRIVE ASSY.

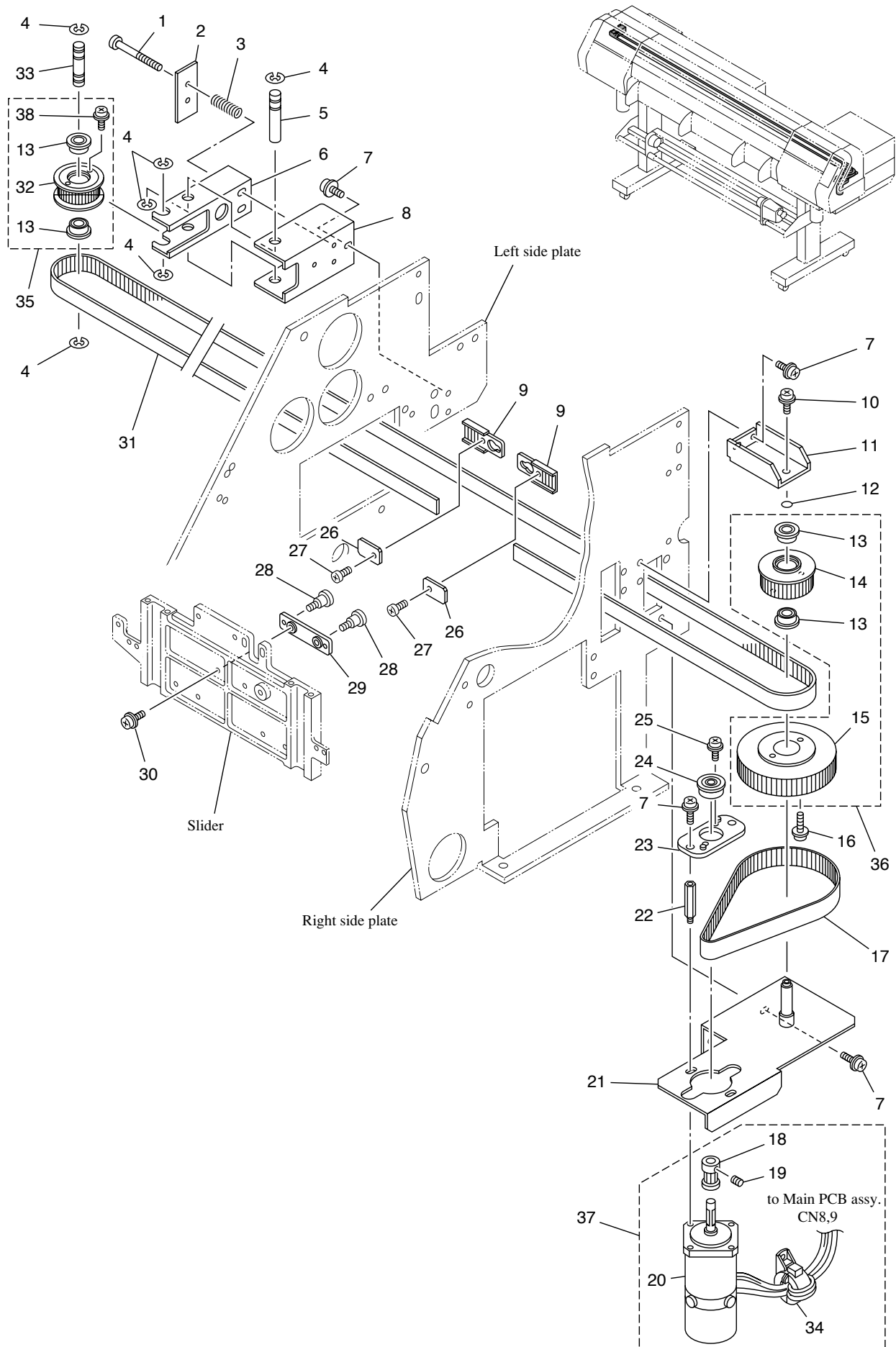


[illegible]

Q:Quantity used R:Recommended part P:Supply quantity

M:(Changed point from Mechanical Drawing previous version):Added part “A”, Deleted part “D”, Changed part “C”

Y-DRIVE ASSY.

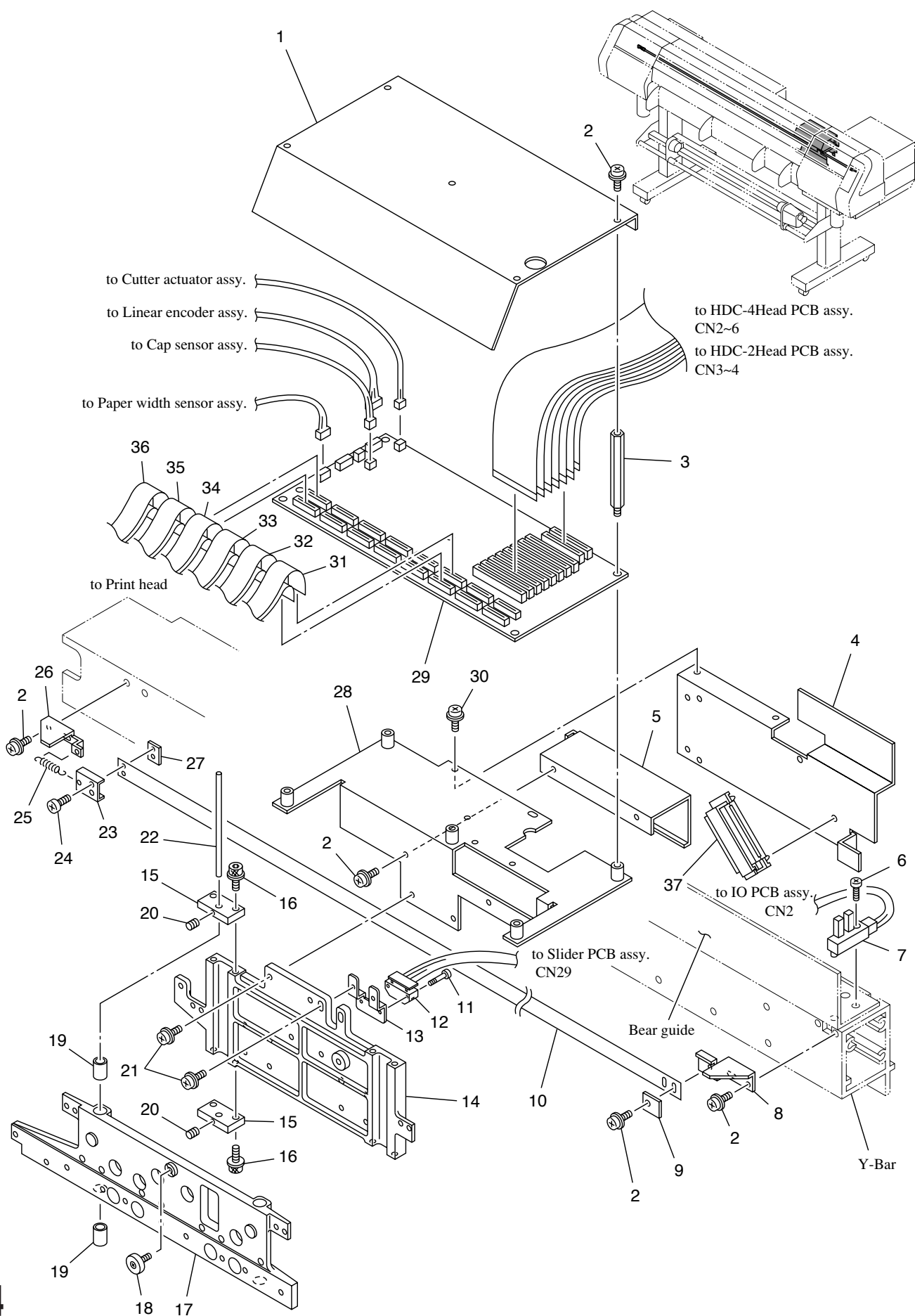


No.	Service Codes	Part codes	Name of part	Remarks	Q			R	P	M
					130	160	180			
1			Screw	B4 x 60	2	<--	<--			
2		M503406	Y-spring plate		1	<--	<--			
3		M800569	Y-spring		2	<--	<--			
4			E-ring	E-6	6	<--	<--			
5		M202842	Y-T fulcrum pin		1	<--	<--			
6		M502878	Y-T pulley bracket		1	<--	<--			
7			Screw	P4 x 10 SMW	8	<--	<--			
8		M502877	Y-T bracket		1	<--	<--			
9		M400160	Belt holder1		2	<--	<--			
10			Screw	P4 x 8 SMW	1	<--	<--			
11		M502708	D-bracket U		1	<--	<--			
12			O-ring	P-9	1	<--	<--			
13			Bearing	F689ZZ	4	<--	<--			
14		M201960	Y-drive pulley		1	<--	<--			
15		M202822	D-pulley		1	<--	<--			
16			Screw	P3 x 14 SMW	2	<--	<--			
17			Belt	150 S2M 380G	1	<--	<--			
18		M202666	DM-pulley		1	<--	<--			
19			Hexagon socket head screw	SSWP4 x 4	1	<--	<--			
20		E300295	Y-axis motor assy.		1	<--	<--			
21		M503403	D-bracket		1	<--	<--			
22		M202665	YM-spacer		2	<--	<--			
23		M502710	YM-top plate		1	<--	<--			
24			Bearing	F607ZZ	1	<--	<--			
25			Screw	P3 x 6 SMW	2	<--	<--			
26		M503786	Belt support plate S		2	<--	<--			
27			Screw	P4 x 6 Round-S	2	<--	<--			
28		M400140	Belt screw		2	<--	<--			
29		M400161	Belt holder		1	<--	<--			
30			Screw	P4 x 2 SMW	2	<--	<--			
31		M800563	S3M Belt 130		1	0	0			
		M800572	S3M Belt 160		0	1	0			
		M800591	S3M Belt 180		0	0	1			
32		M201966	Y-driven pulley		1	<--	<--			
33		M202841	Y-T pulley shaft		1	<--	<--			
34			Troidal ferrite clamp	TFCK-25-15-12	1	<--	<--			
35		M002732	Y-driven pulley assy.		1	<--	<--			
36		M006891	Y-drive pulley assy.		1	<--	<--			C
37		M004725	Y-drive motor total assy.		1	<--	<--			
38			Screw	P3 x 6 SMW	4	<--	<--			

Q:Quantity used R:Recommended part P:Supply quantity

M:(Changed point from Mechanical Drawing previous version):Added part "A", Deleted part "D", Changed part "C"

SLIDER ASSY.

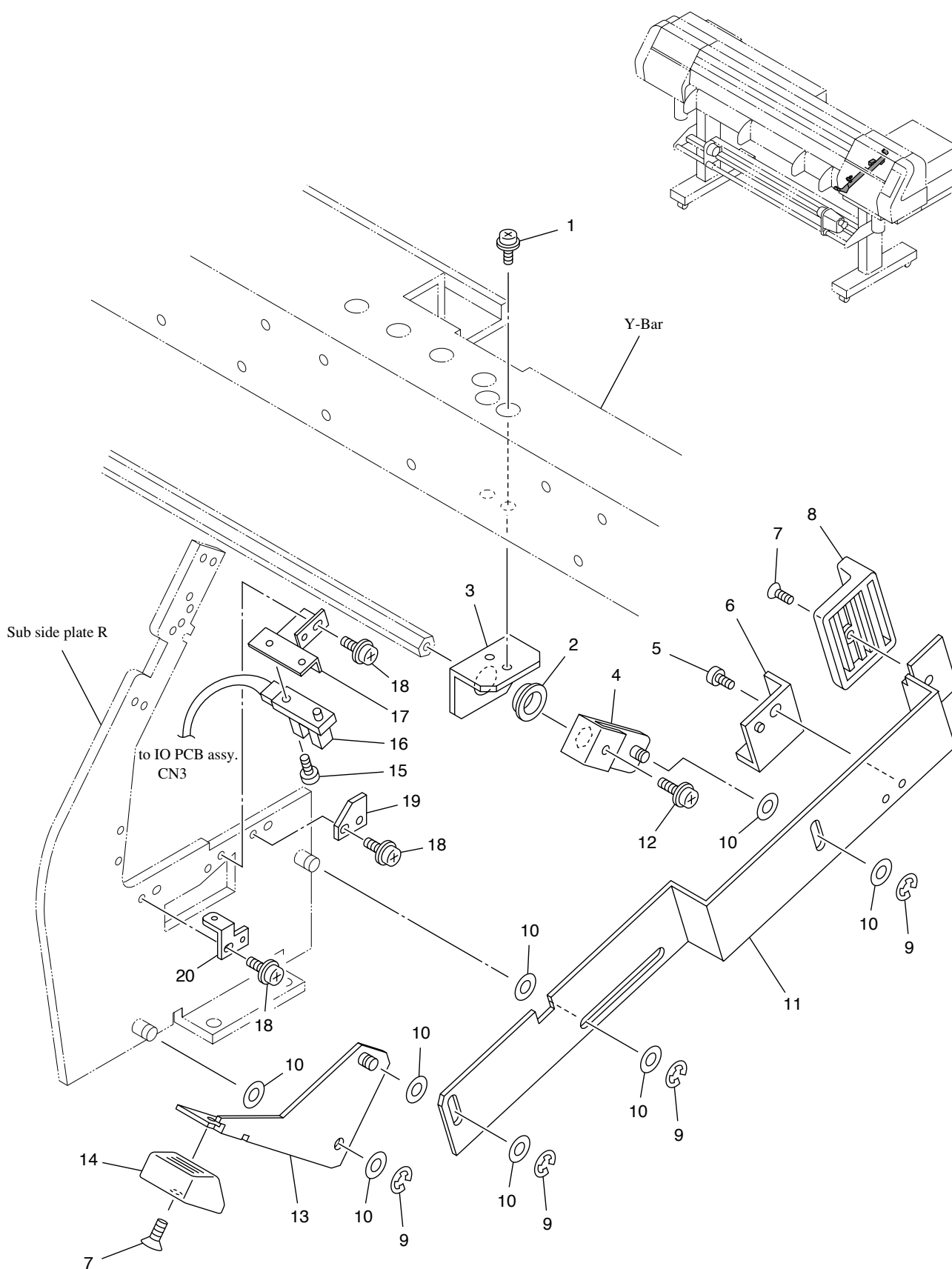


No.	Service Codes	Part codes	Name of part	Remarks	Q			R	P	M
					130	160	180			
1		M503464	FPC cover		1	<--	<--			
2			Screw	P3 x 6 SMW	12	<--	<--			
3			Spacer	SQ-25	5	<--	<--			
4		M503389	FPC guide plate		1	<--	<--			
5		M503412	Tube guide		1	<--	<--			
6			Screw	B4 x 10 Black	1	<--	<--			
7		E102025	Origin sensor assy.		1	<--	<--			
8		M503503	Slider stopper R		1	<--	<--			
9		M503398	Scale holder R		1	<--	<--			
10		E300245	Linear encoder scale assy.		1	0	0			
		E300473	Linear encoder scale 160 assy.		0	1	0			C
		E300470	Linear encoder scale 180 assy.		0	0	1			C
11			Screw	P2 x 12	1	<--	<--			
12		E102044	Linear encoder PCB assy.		1	<--	<--			
13		M503404	L sensor bracket		1	<--	<--			
14		M400214	Slider		1	<--	<--			
15		M203319	Shaft holder		4	<--	<--			
16			Screw	CS3 x 8 SMW	8	<--	<--			
17		M400209	Head base		1	<--	<--			
18			TOK bearing	DO-19-B0.5	1	<--	<--			
19			Linear bushing	SM5G	4	<--	<--			
20			Hexagon socket head screw	SS Flat 3 x 3	4	<--	<--			
21			Screw	P3 x 8 SMW	4	<--	<--			
22		M203317	H-axis hold shaft		2	<--	<--			
23		M503397	Scale hook		1	<--	<--			
24			Screw	B3 x 6 Ni	2	<--	<--			
25		M800565	Scale spring		1	<--	<--			
26		M503504	Slider stopper L		1	<--	<--			
27		M503399	Scale holder L		1	<--	<--			
28		M503390	Slider PCB bracket		1	<--	<--			
29		E102054	Slider PCB assy.		1	<--	<--			
30			Screw	P3 x 6 SMW	2	<--	<--			
31		E102050	Head FPC 6 assy.		1	<--	<--			
32		E102049	Head FPC 5 assy.		1	<--	<--			
33		E102048	Head FPC 4 assy.		1	<--	<--			
34		E102047	Head FPC 3 assy.		1	<--	<--			
35		E102046	Head FPC 2 assy.		1	<--	<--			
36		E102038	Head FPC 1 assy.		1	<--	<--			
37			Block core	EFC-50-S	1	<--	<--			

Q:Quantity used R:Recommended part P:Supply quantity

M:(Changed point from Mechanical Drawing previous version):Added part "A", Deleted part "D", Changed part "C"

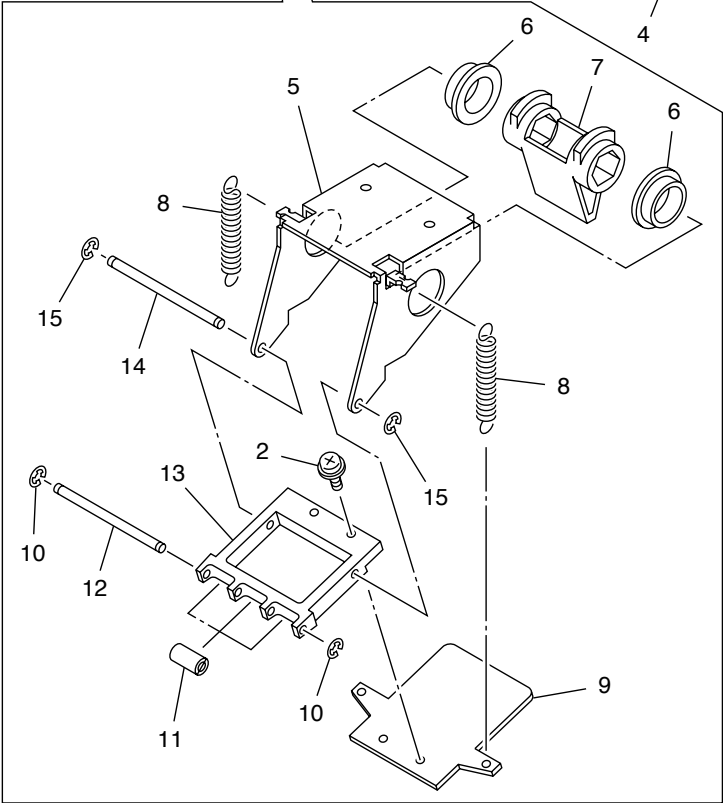
CLAMP ASSY. - 1/2



[illegible]

Q:Quantity used R:Recommended part P:Supply quantity

M:(Changed point from Mechanical Drawing previous version):Added part “A”, Deleted part “D”, Changed part “C”

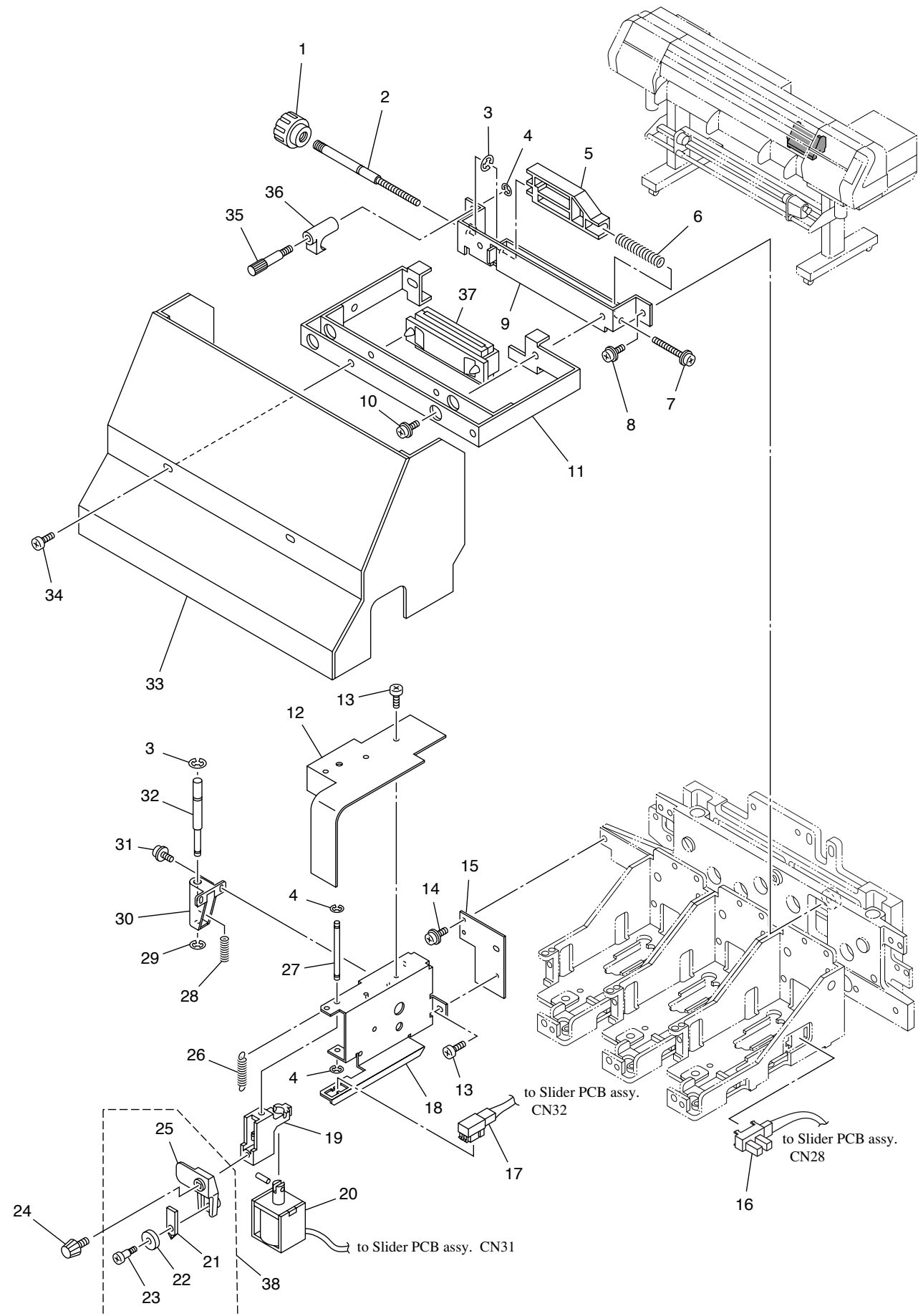


[illegible]

Q:Quantity used R:Recommended part P:Supply quantity

M:(Changed point from Mechanical Drawing previous version):Added part “A”, Deleted part “D”, Changed part “C”

HEAD ASSY. - 1/2

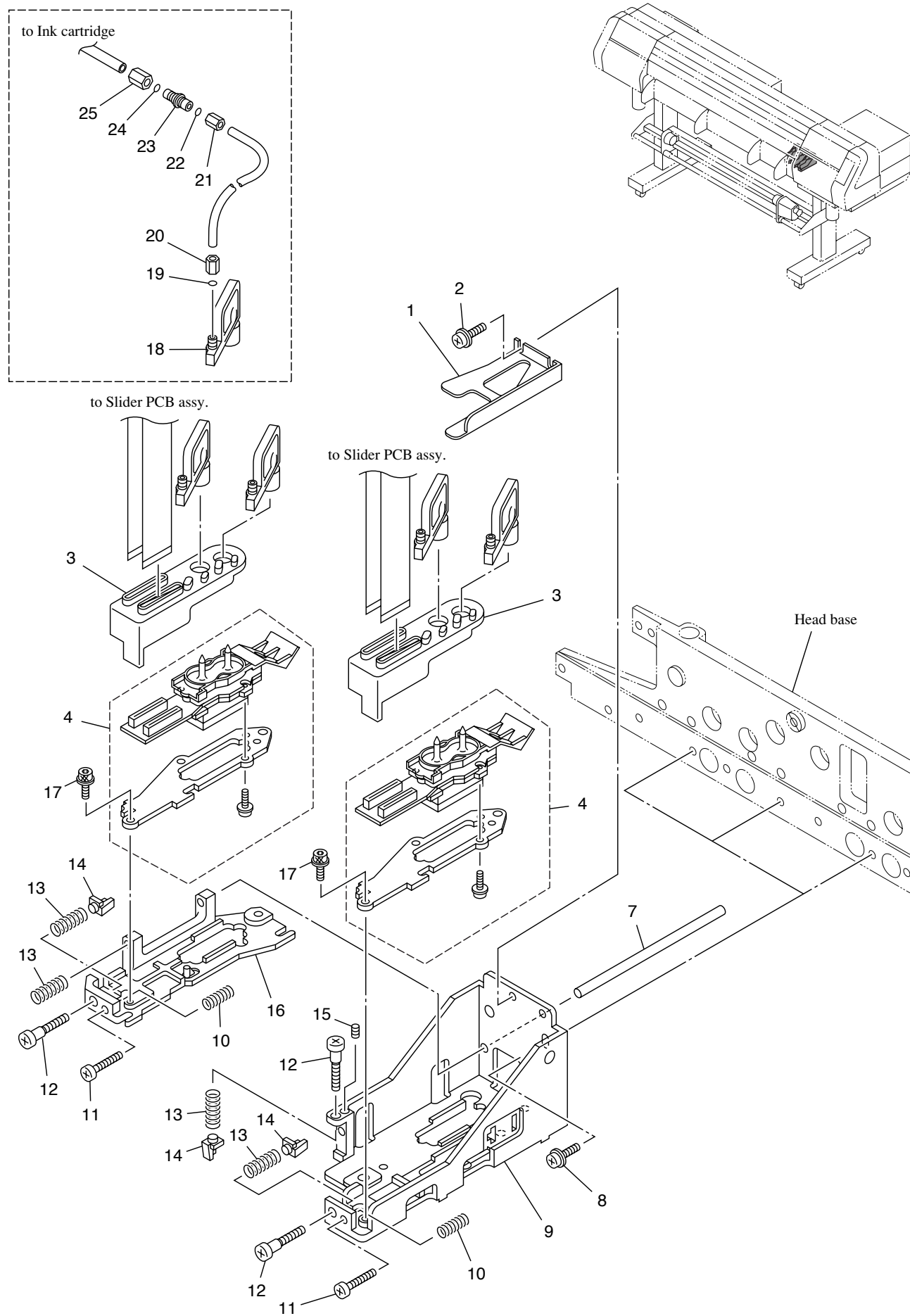


No.	Service Codes	Part codes	Name of part	Remarks	Q			R	P	M
					130	160	180			
1			Knob	KDF-20-M5	1	<--	<--			
2		M203316	Head H shaft		1	<--	<--			
3			E-ring	E-4	2	<--	<--			
4			E-ring	E-2.5	3	<--	<--			
5		M601049	H-adjuster		1	<--	<--			
6		M800567	H-adjust spring		1	<--	<--			
7			Screw	P4 x 15 SMW	1	<--	<--			
8			Screw	P4 x 8 SMW	2	<--	<--			
9		M503402	Head UD bracket		1	<--	<--			
10			Screw	P3 x 6 SMW	2	<--	<--			
11		M503463	Head cover bracket		1	<--	<--			
12		M503462	Cutter cover		1	<--	<--			
13			Screw	B3 x 6 Black	4	<--	<--			
14			Screw	P3 x 10 SMW	2	<--	<--			
15		M503392	Cutter unit base		1	<--	<--			
16		E102027	Cap sensor assy.		1	<--	<--			
17		E102023	Paper width sensor assy.		1	<--	<--			
18		M503393	Cutter bracket		1	<--	<--			
19		M601053	Cutter holder		1	<--	<--			
20		E102022	Cutter actuator assy.		1	<--	<--			
21		M201535	Cutter L		1	<--	<--			
22		M601085	Cutter roller		1	<--	<--			
23		M400219	Cutter screw		1	<--	<--			
24			Face screw	Urea N5-M6,L=20	1	<--	<--			
25		M601086	Cutter holder		1	<--	<--			
26			Extension spring	E-505	1	<--	<--			
27		M203322	Cutter shaft		1	<--	<--			
28		M800564	Pin spring		1	<--	<--			
29			E-ring	E-3	1	<--	<--			
30		M601050	Pin guide		1	<--	<--			
31			Screw	P3 x 8 SMW	2	<--	<--			
32		M203314	Height adjusting pin		1	<--	<--			
33		M503467	Head cover		1	<--	<--			
34			Screw	B3 x 6 Black	2	<--	<--			
35		M203318	H-axis fixing shaft		1	<--	<--			
36		M601051	H-axis stopper		1	<--	<--			
37			Block core	EFC-40-S	1	<--	<--			
38			Cutter assy.	Supply goods SPA-0107	1	<--	<--			

Q:Quantity used R:Recommended part P:Supply quantity

M:(Changed point from Mechanical Drawing previous version):Added part "A", Deleted part "D", Changed part "C"

HEAD ASSY. - 2/2

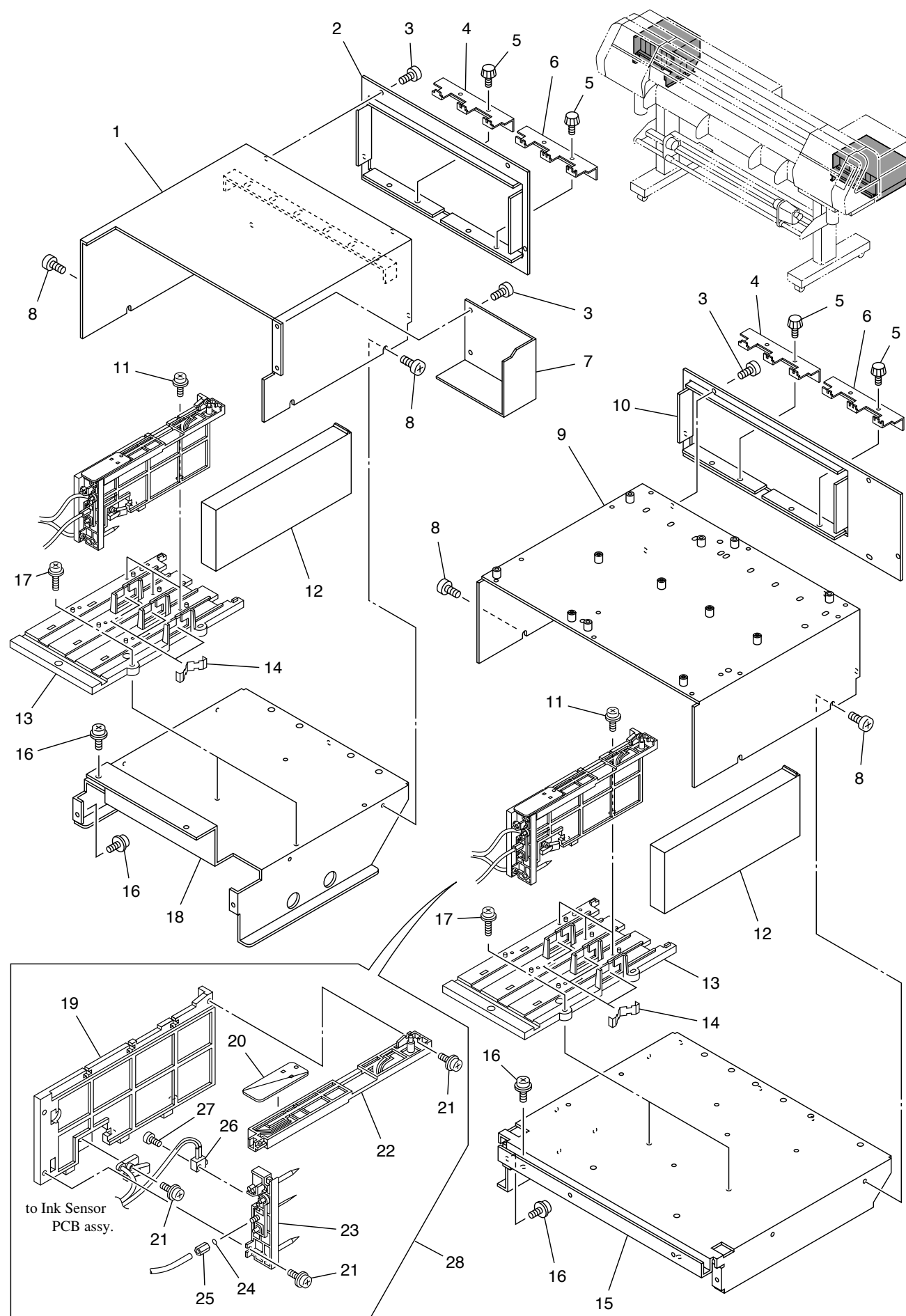


[illegible]

Q:Quantity used R:Recommended part P:Supply quantity

M:(Changed point from Mechanical Drawing previous version):Added part “A”, Deleted part “D”, Changed part “C”

CARTRIDGE ASSY.

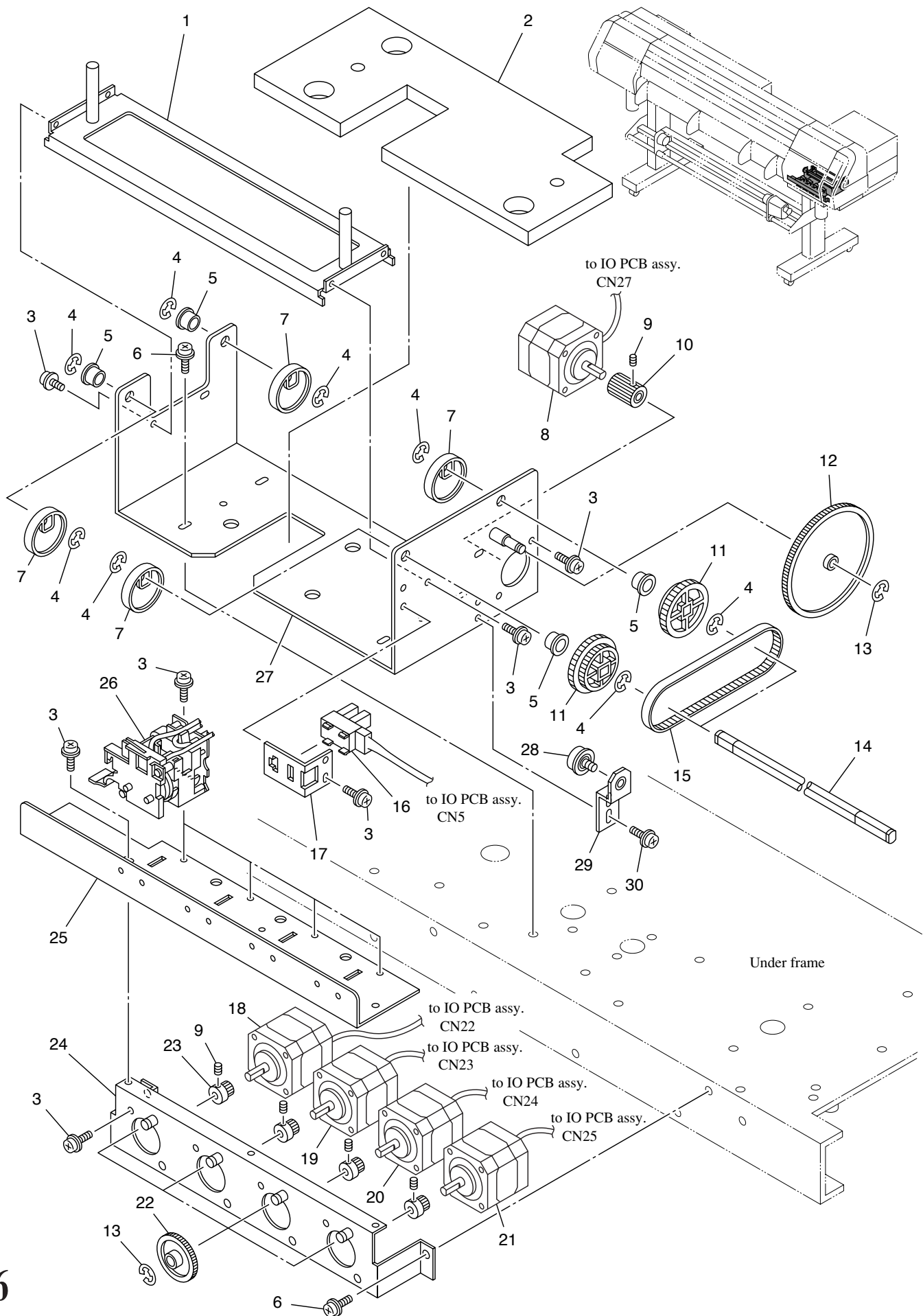


[illegible]

Q:Quantity used R:Recommended part P:Supply quantity

M:(Changed point from Mechanical Drawing previous version):Added part “A”, Deleted part “D”, Changed part “C”

STATION ASSY. - 1/2

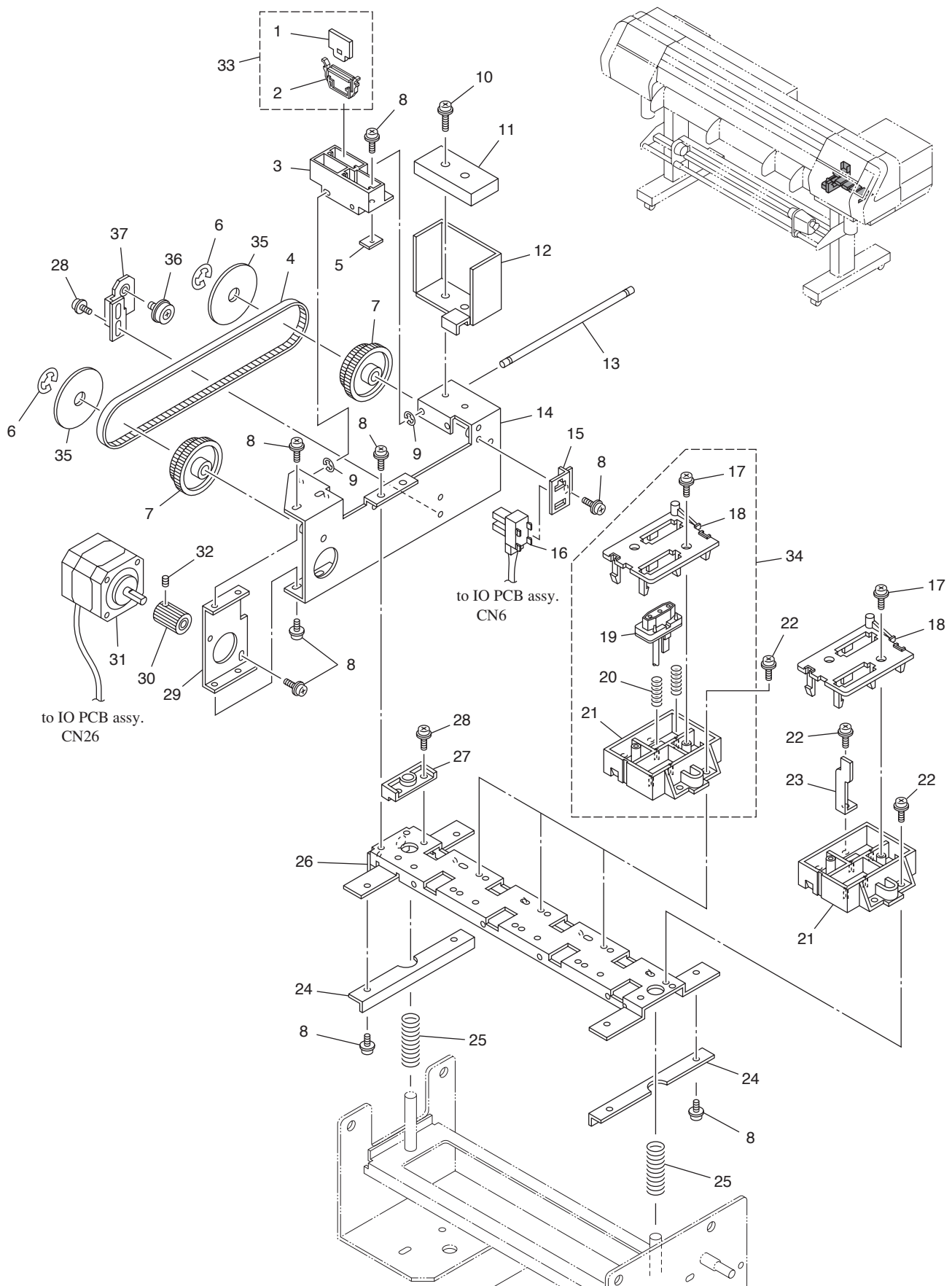


[illegible]

Q:Quantity used R:Recommended part P:Supply quantity

M:(Changed point from Mechanical Drawing previous version):Added part “A”, Deleted part “D”, Changed part “C”

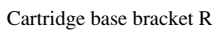
STATION ASSY. - 2/2



No.	Service Codes	Part codes	Name of part	Remarks	Q			R	P	M
					130	160	180			
1			Cleaner	1033209	2	<--	<--			
2		M601015	Wiper holder		2	<--	<--			
3		M601019	Wiper holder base		1	<--	<--			
4			Belt	40 S2M440U	1	<--	<--			
5		M503456	Wiper belt holder		1	<--	<--			
6			E-ring	E-6	2	<--	<--			
7		M601055	Wiper gear S		2	<--	<--			
8			Screw	P3 x 6 SMW	15	<--	<--			
9			E-ring	E-2.5	4	<--	<--			
10			Screw	P3 x 14 SMW	2	<--	<--			
11		M902739	Absorber		1	<--	<--			
12		M503531	Wiper ink guard		1	<--	<--			
13		M203344	Wiper shaft S		2	<--	<--			
14		M003974	Wiper bracket S		1	<--	<--			
15		M503454	Wiper sensor bracket		1	<--	<--			
16		E102029	Wiper sensor assy.		1	<--	<--			
17			Screw	TP3 x 12F Black	8	<--	<--			
18		M600999	Cap housing U		4	<--	<--			
19			Cap head assy.	213221	6	<--	<--			
20		M800573	Cap spring		12	<--	<--			
21		M601000	Cap housing D		4	<--	<--			
22			Screw	P3 x 8 SMW Round-S	16	<--	<--			
23		M503450	Cap sensor plate		1	<--	<--			
24		M503449	Cam bridge		2	<--	<--			
25		M800575	Station spring		2	<--	<--			
26		M503448	Cap frame		1	<--	<--			
27		M601052	Station guide		1	<--	<--			
28			Screw	P3 x 8 SMW	3	<--	<--			
29		M503455	Wiper motor bracket S		1	<--	<--			
30		M400211	Station motor gear		1	<--	<--			
31		E102141	Wiper motor assy.		1	<--	<--			
32			Hexagon socket head screw	SSWP 3 x 3	1	<--	<--			
33			Cleaning wiper kit	Supply goods SPA-0105						
34		M004359	Cap housing assy.		3	<--	<--			
35		M503696	Wiper gear flange		2	<--	<--			
36			TOK bearing	DF-17-B0.5	1	<--	<--			
37		M504293	W-T bracket		1	<--	<--			

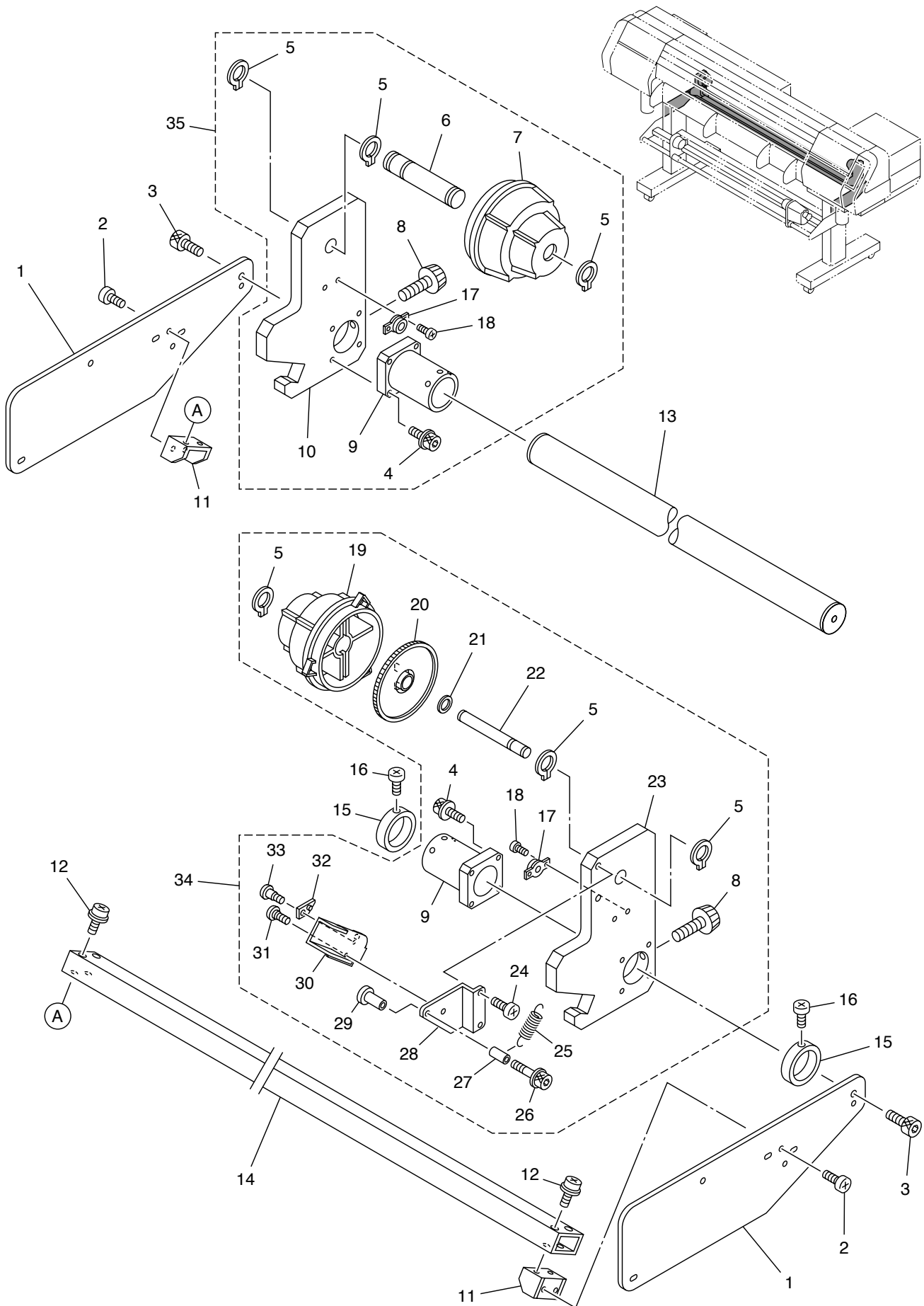
Q:Quantity used R:Recommended part P:Supply quantity

M:(Changed point from Mechanical Drawing previous version):Added part "A", Deleted part "D", Changed part "C"



M:(Changed point from Mechanical Drawing previous version):Added part “A”, Deleted part “D”, Changed part “C”

ROLL ASSY. (JV4-180)

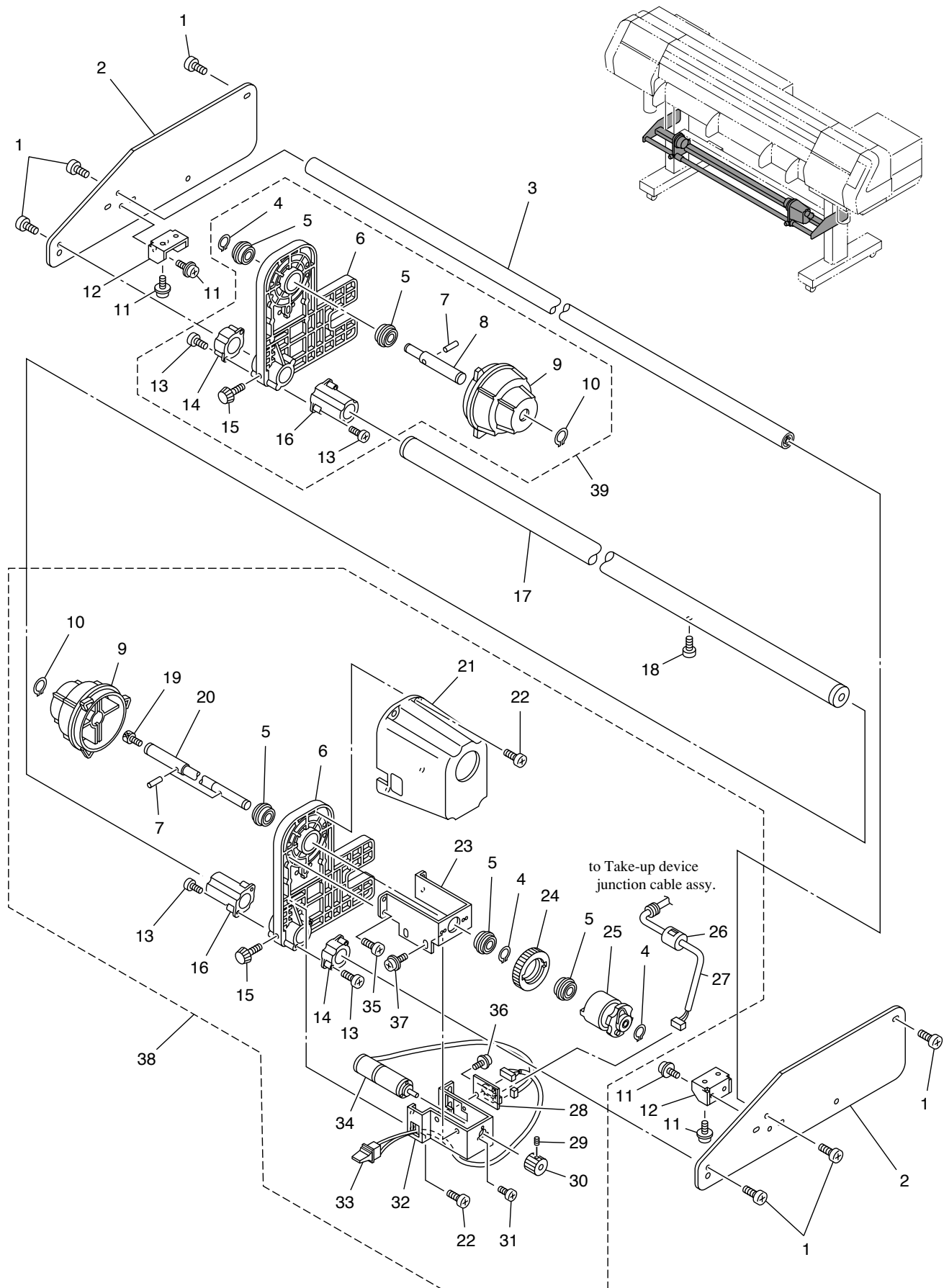


No.	Service Codes	Part codes	Name of part	Remarks	Q			R	P	M
					130	160	180			
1		M503442	Roll bracket		0	0	2			
2			Screw	B4 x 6 Black	0	0	4			
3			Hexagon socket head cap screw	CS6 x 15 Black	0	0	2			
4			Hexagon socket head cap screw	CS4 x 20 SMW Black	0	0	8			
5			C-ring	C-14	0	0	6			
6		M203335	Roll holder shaft 180		0	0	2			
7		M600686	Roll holder G		0	0	2			
8			Face screw (Black)	Urea N5-M6, L=20	0	0	2			
9		M202507	Extension long bushing (180)		0	0	2			
10		M203337	Roll base180		0	0	2			
11		M503445	Sub roll shaft stay		0	0	2			
12			Screw	P4 x 8 SMW	0	0	4			
13		M203343	Main roll shaft 180		0	0	1			
14		M300728	Sub roll shaft 180		0	0	1			
15		M203338	Roll guide collar		0	0	2			
16			Screw	B4 x 10 Black	0	0	2			
17			Rotary damper	FRT-G2-200G2	0	0	2			
18			Screw	B2 x 6 Black	0	0	2			
19		M600500	Roll holder		0	0	1			A
20		M601168	Roll holder gear		0	0	1			A
21			Washer	φ15.2-φ23.1, T=0.25	0	0	1			A
22		M203507	Roll holder shaft R180		0	0	1			A
23		M203503	Roll base R180		0	0	1			A
24			Screw	B4 x 10 Black	0	0	2			A
25		M800604	Roll stopper SP2		0	0	1			A
26			Screw	P4 x 25SMW	0	0	1			A
27			Bushing	φ4, L=8	0	0	1			A
28		M503842	Roll stopper braket 180		0	0	1			A
29			Nut	M4, B832	0	0	1			A
30		M503841	Roll stopper B2 180		0	0	1			A
31		M400233	Bear holder screw		0	0	1			A
32		M601087	Roll stopper A		0	0	1			A
33		M400140	Screw		0	0	1			A
34		M004647	Roll base R180 assy		0	0	1			A
35		M004915	Roll base L180 assy		0	0	1			A

Q:Quantity used R:Recommended part P:Supply quantity

M:(Changed point from Mechanical Drawing previous version):Added part "A", Deleted part "D", Changed part "C"

TAKE-UP DEVICE ASSY.

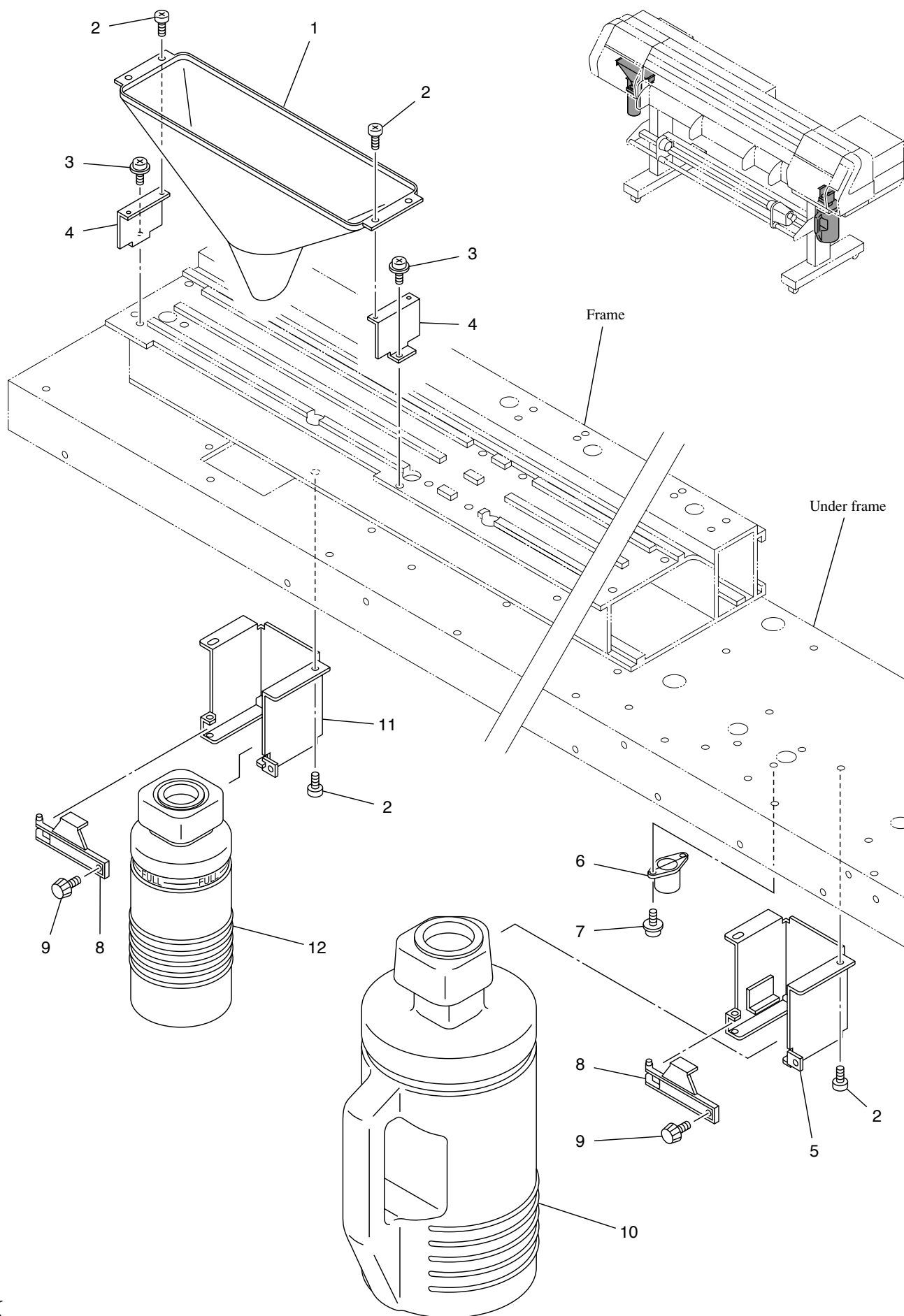


No.	Service Codes	Part codes	Name of part	Remarks	Q			R	P	M
					130	160	180			
1			Screw	B4 x 10 Black	8	<--	<--			
2		M503442	Roll bracket		2	<--	<--			
3		M300726	Sub roll shaft 130		1	0	0			
		M300727	Sub roll shaft 160		0	1	0			
		M300728	Sub roll shaft 180		0	0	1			
4			C-ring	C-12	3	<--	<--			
5			Bearing	6901ZZ	5	<--	<--			
6		M600509	Roll base M		2	<--	<--			
7			Spring pin	φ3 x 20	3	<--	<--			
8		M202118	Holder shaft		1	<--	<--			
9		M600500	Roll holder		2	<--	<--			
10			C-ring	C-14	2	<--	<--			
11			Screw	P4 x 10 SMW	0	0	8			
12		M503445	Sub roll shaft stay		0	0	2			
13			Screw	BZ4 x 10 Black	8	<--	<--			
14		M600541	Extension bushing		2	<--	<--			
15			Face screw	Urea N5-M6, L=20	2	<--	<--			
16		M600540	Extension long bushing		2	<--	<--			
17		M203339	Main wind-up shaft 130		1	0	0			
		M203340	Main wind-up shaft 160		0	1	0			
		M203341	Main wind-up shaft 180		0	0	1			
18			Screw	B4 x 10 Ni	1	<--	<--			
19			Hexagon socket head cap screw	CP4 x 8	1	<--	<--			
20		M202502	TL shaft (180)		1	<--	<--			
21		M601026	Wind-up cover		1	<--	<--			
22			Screw	BZ4 x 10	8	<--	<--			
23		M503529	TL bracket		1	<--	<--			
24		M400202	TL gear (180)		1	<--	<--			
25			Mini keeper	MK-12	1	<--	<--			
26			Troidal ferrite clamp	TFC-16816	1	<--	<--			
27		E102129	Take-up motor cable assy.		1	<--	<--			
28		E101185	Take-up motor PCB assy.		1	<--	<--			
29			Hexagon socket head screw	SSWP3 x 6	1	<--	<--			
30		M202782	M gear (A) (180)		1	<--	<--			
31			Screw	B2.5 x 5	3	<--	<--			
32		M503530	Take-up motor bracket		1	<--	<--			
33		E101209	Take-up motor switch assy.		1	<--	<--			
34		E101604	Take-up motor assy.		1	<--	<--			
35			Screw	BZ4 x 10	4	<--	<--			
36			Screw	P3 x 6 SMW	2	<--	<--			
37			Screw	P4 x 8 SMW	2	<--	<--			
38		M004403	Take-up right assy.		1	<--	<--			
39		M007798	Take-up left assy.		1	<--	<--			A

Q:Quantity used R:Recommended part P:Supply quantity

M:(Changed point from Mechanical Drawing previous version):Added part "A", Deleted part "D", Changed part "C"

WASTE INK TANK ASSY.



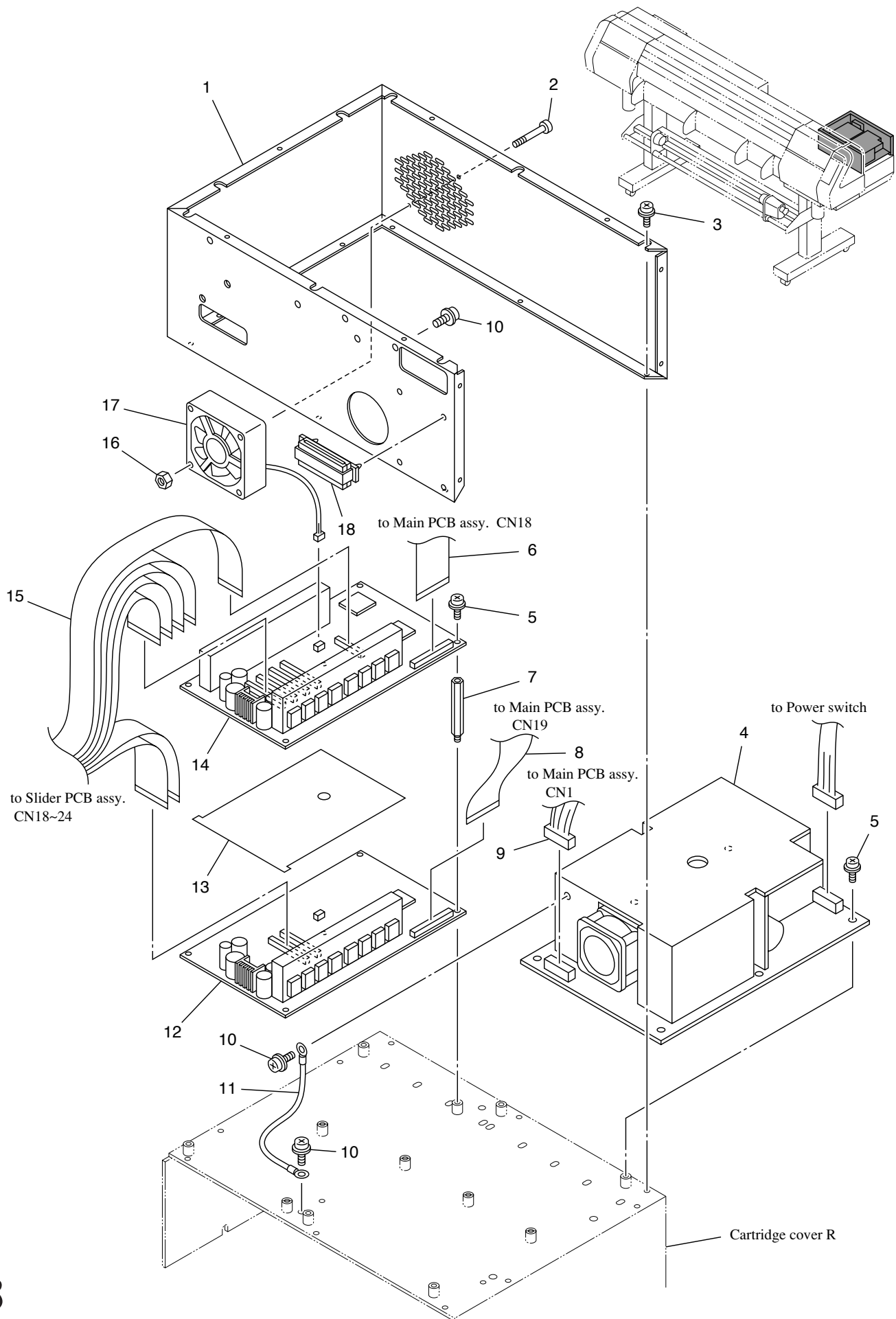
WASTE INK TANK ASSY.

[illegible]

Q:Quantity used R:Recommended part P:Supply quantity

M:(Changed point from Mechanical Drawing previous version):Added part “A”, Deleted part “D”, Changed part “C”

ELECTRICAL UNIT ASSY. - 1/2

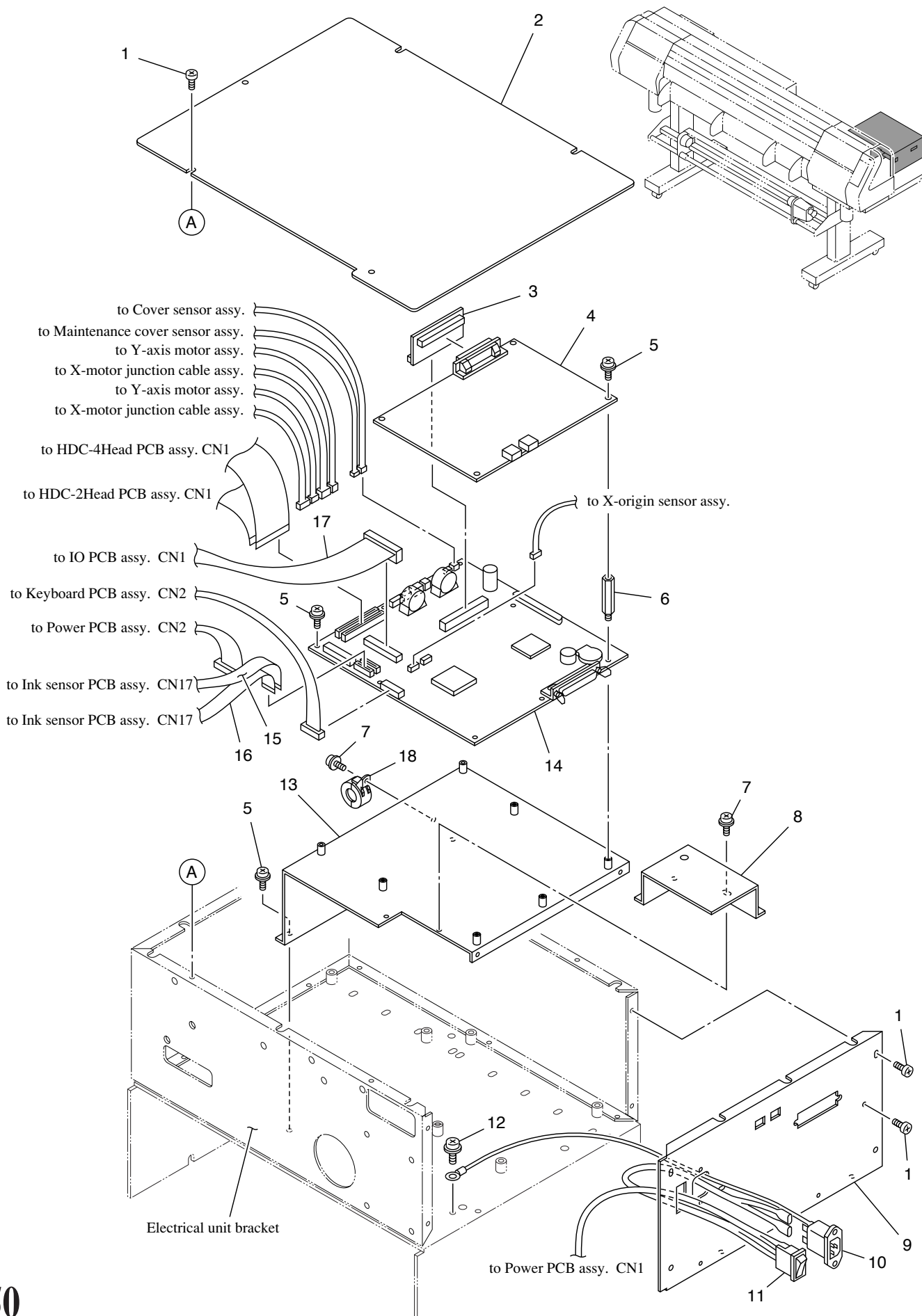


[illegible]

Q:Quantity used R:Recommended part P:Supply quantity

M:(Changed point from Mechanical Drawing previous version):Added part “A”, Deleted part “D”, Changed part “C”

ELECTRICAL UNIT ASSY. - 2/2



M:(Changed point from Mechanical Drawing previous version):Added part “A”, Deleted part “D”, Changed part “C”

