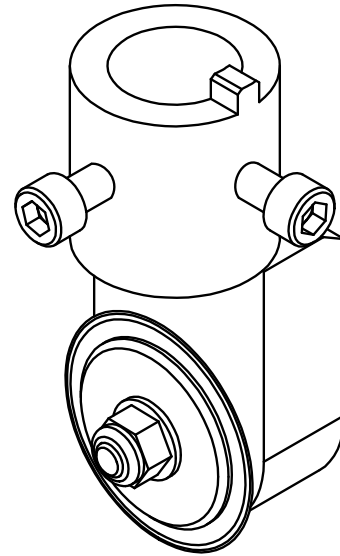


# ***Automated Cutting Tools***

## ***Illustrated Parts List***

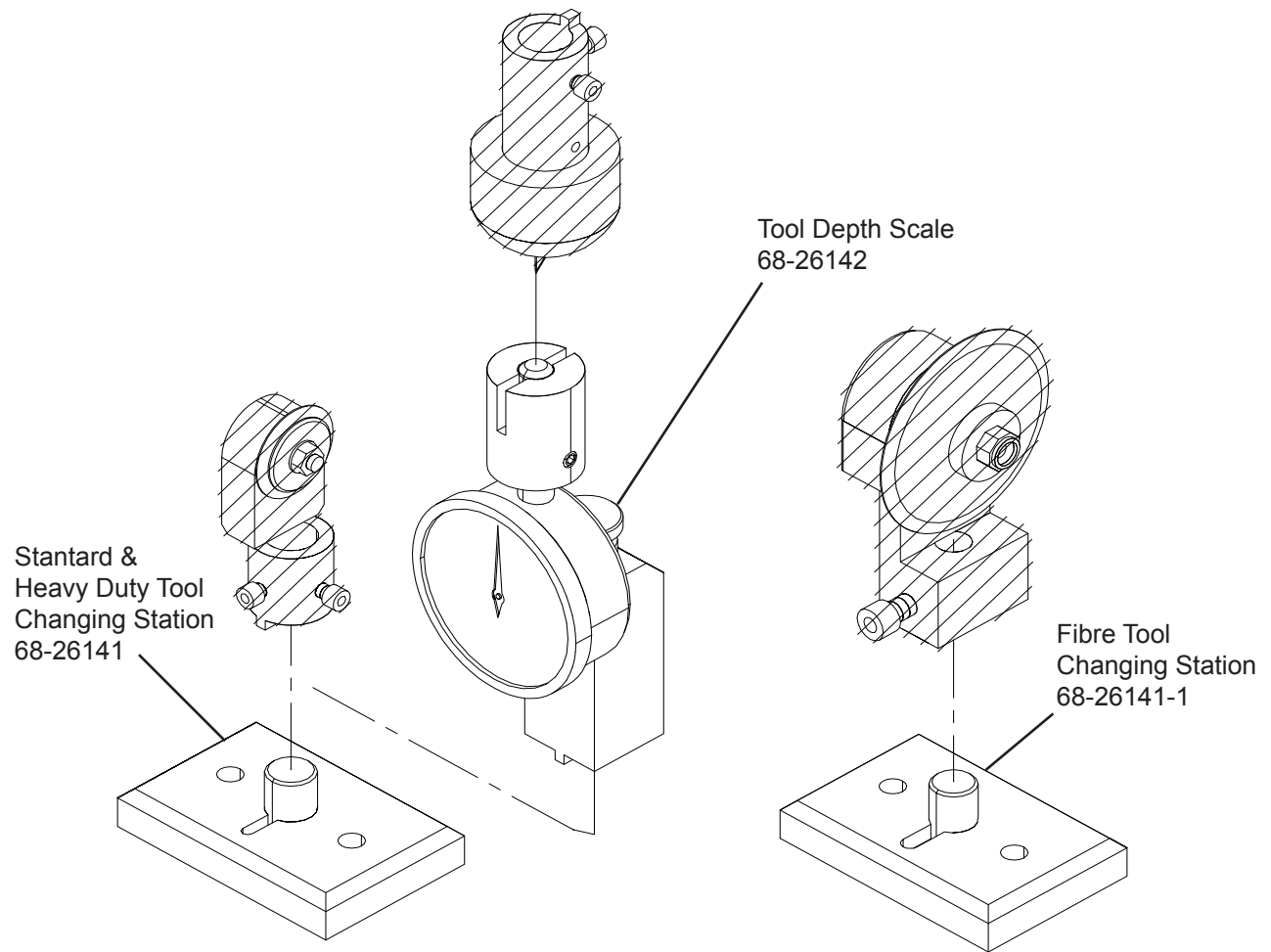
### ***Features:***

***Round Knife***  
***Drag Knife***  
***1" Drag Knife***  
***X-Acto Drag Knife***  
***Slitter Knife***  
***Hole Punch***  
***"V" Notch***  
***"V" Knife Cutter***  
***Chalk Marking Tool***  
***Corner Punch***  
***Carpet Cutter***  
***Creasing Drag Assembly***  
***Depth Scales***  
***& Tool Changing Stations***



1" (28mm)  
Round Knife Assembly  
(Shown)

# ***Tool Changing Stations & Tool Depth Scale***



# Tool Options

## 1" (28mm) Round Knife Assembly

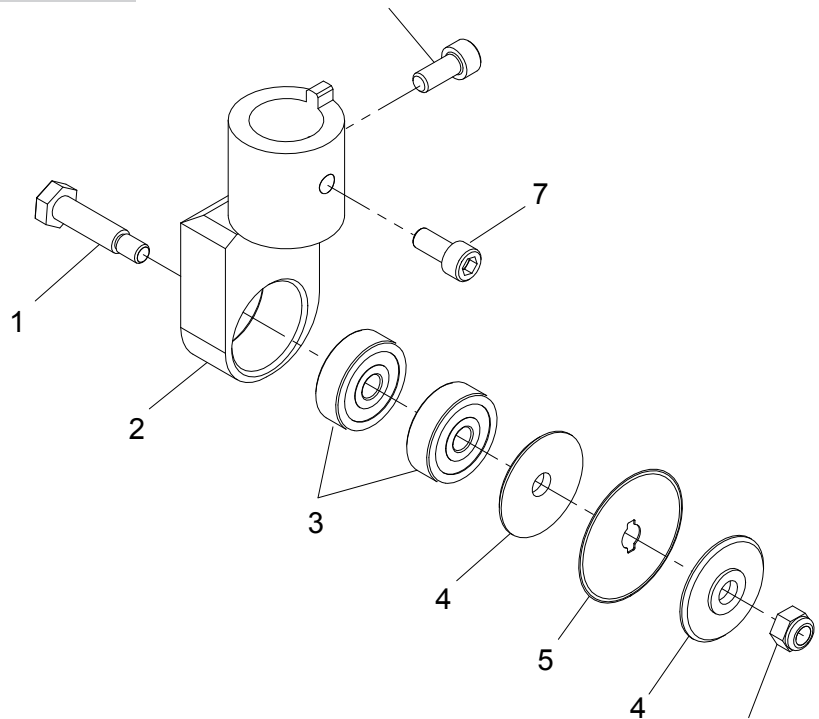
H9-30069

ITEM	PART No.	DESCRIPTION	QTY
1	54-26225	Knife Bolt	1
2	54-26098-1	Knife Holder, 1"	1
3	67-26099	Bearing, Special	2
4	54-26099	Limiting Disc (std)	2
	54-26430	.010 Limiting Disc (option)	2
	54-26387	.015 Limiting Disc (option)	2
	54-26431	.020 Limiting Disc (option)	2
	54-26101	.030 Limiting Disc (option)	2
	54-26101-1	.030 Limiting Disc, Wide(option)	2
	54-26451	.040 Limiting Disc (option)	2
	54-26100	.050 Limiting Disc (std option)	2
	54-26100-1	.050 Limiting Disc, Wide(option)	2
	54-26394	.060 Limiting Disc (std option)	2
	54-26395	.070 Limiting Disc (option)	2
*5	C280	1" (28 mm) Round Knife	1
	67-02953-1	28mm(1.0") Rd. Knife, Carbide	1
	54-28665	1" x .04 Creasing Blade, Full	1
6	211-M4	Stop Nut, M-4	1
7	335-93-6	Screw, Socket Hd. 8-32 x 3/8	2

\* = Includes 2 per pack

### \* Adapters not Included

Required Adapters for use with each Tool Spindle:  
 Standard Tool Head (all types) .... 54-26021-1  
 Heavy Duty Tool Head..... Not Required  
 Fiber Cutter Tool Head ..... 54-26020-3



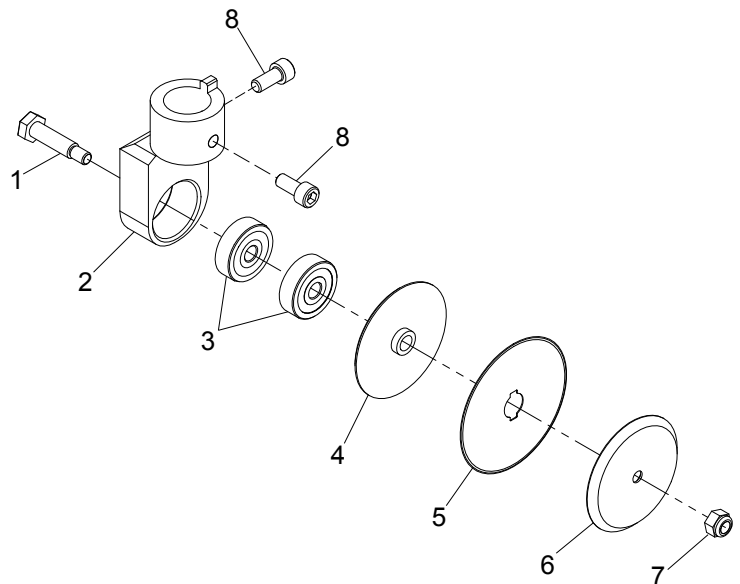
# Tool Options

## 2" (45mm) Round Knife Assembly H9-30070

ITEM	PART No.	DESCRIPTION	QTY
1	54-26225	Knife Bolt	1
2	54-26102	Knife Holder, 2"	1
3	67-26099	Bearing, Special	2
4	54-26103	.135 Limit Mntg Disc (std)	1
	54-26374	.010 Limit Mntg Disc (option)	1
	54-26432	.015 Limit Mntg Disc (option)	1
	54-26434	.020 Limit Mntg Disc (option)	1
	54-26105	.025 Limit Mntg Disc (option)	1
	54-26447	.030 Limit Mntg Disc (std option)	1
	54-26106	.040 Limit Mntg Disc (option)	1
	54-26106-1	.040 Limit Wide Mntg Disc	1
	54-26449	.045 Limit Mntg Disc (option)	1
	54-26399	.050 Limit Mntg Disc (std option)	1
	54-26348	.060 Limit Mntg Disc (option)	1
	54-26348-1	.060 Limit Wide Mntg Disc	1
	54-26445	.070 Limit Mntg Disc (std option)	1
	54-26969	.100 Limit Mntg Disc (option)	1
	54-26477	.175 Limit Mntg Disc (option)	1
	54-27025	.312 Limit Mntg Disc (option)	1
	54-27894	.380 Limit Mntg Disc (option)	1
	54-26918	.438 Limit Mntg Disc, Max(option)	1
5	C450	2" (45 mm) Round Knife	1
	54-02994-1	45mm(2.0") Rd. Knife, Carbide	1
6	54-26104	.135 Limit Clp Disc (std)	1
	54-26375	.010 Limit Clp Disc (option)	1
	54-26433	.015 Limit Clp Disc (option)	1
	54-26435	.020 Limit Clp Disc (option)	1
	54-26107	.025 Limit Clp Disc (option)	1
	54-26448	.030 Limit Clp Disc (std option)	1
	54-26108	.040 Limit Clp Disc (option)	1
	54-26108-1	.040 Limit Wide Clp Disc	1
	54-26450	.045 Limit Clp Disc (option)	1
	54-26400	.050 Limit Clp Disc (std option)	1
	54-26349	.060 Limit Clp Disc (option)	1
	54-26349-1	.060 Limit Wide Clp Disc(option)	1
	54-26446	.070 Limit Clp Disc (std option)	1
	54-26970	.100 Limit Clp Disc (option)	1
	54-26478	.175 Limit Clp Disc (option)	1
	54-27026	.312 Limit Clp Disc (option)	1
	54-27895	.380 Limit Clp Disc (option)	1
	54-26919	.438 Limit Clp Disc, Max(option)	1
7	211-M4	Stop Nut, M-4	1
8	335-93-6	Screw, Socket Hd. 8-32 x 3/8	2

### \* Adapters not Included

Required Adapters for use with each Tool Spindle:  
 Standard Tool Head (all types).... 54-26021-1  
 Heavy Duty Tool Head..... Not Required  
 Fiber Cutter Tool Head ..... 54-26020-3



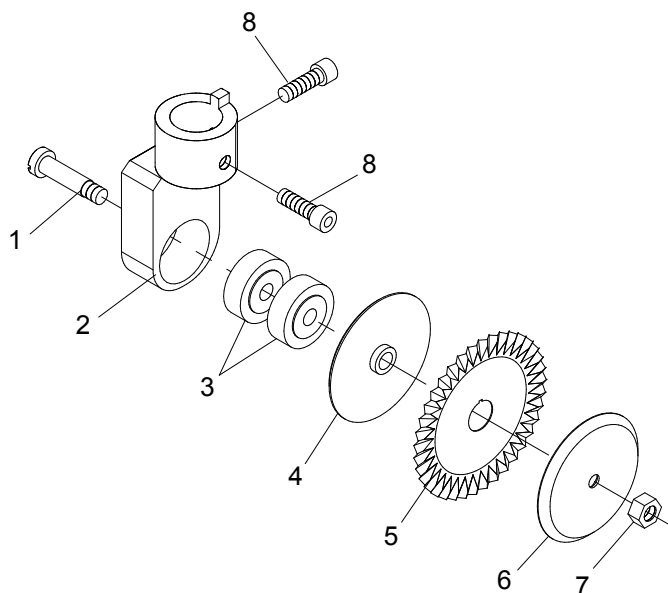
## Tool Options

### 2" (45mm) Pinking Knife Assembly H9-30076

ITEM	PART No.	DESCRIPTION	QTY
1	54-26225	Knife Bolt	1
2	54-26102	Knife Holder, 2"	1
3	67-26099	Bearing, Special	2
4	54-26424	Pinking Blade Mound Disk	1
5	67-02954	2" (45 mm) Pinking Blade	1
6	54-26425	Pinking Blade Clamp Disc	1
7	211-M4	Stop Nut, M-4	1
8	335-93-6	Screw, Socket Hd. 8-32 x 3/8	2

**\* Adapters not Included**

Required Adapters for use with each Tool Spindle:  
 Standard Tool Head (all types) .... 54-26021-1  
 Heavy Duty Tool Head..... Not Required  
 Fiber Cutter Tool Head ..... 54-26020-3



Pinking Blade Pattern

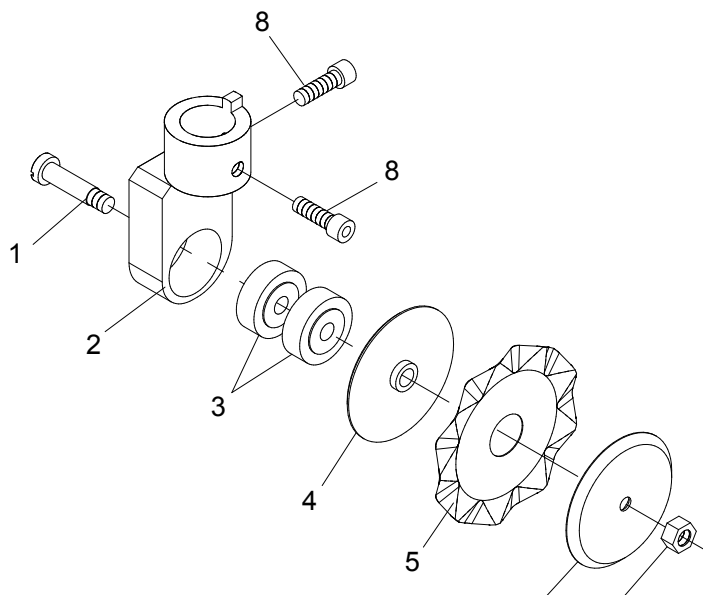
~ ~ ~ ~ ~ ~ ~ ~ ~

### 2" (45mm) Wave Knife Assembly H9-30077

ITEM	PART No.	DESCRIPTION	QTY
1	54-26225	Knife Bolt	1
2	54-26102	Knife Holder, 2"	1
3	67-26099	Bearing, Special	2
4	54-26424	Pinking Blade Mound Disk	1
5	67-02955	2" (45 mm) Wave Pinking Blade	1
6	54-26425	Pinking Blade Clamp Disc	1
7	211-M4	Stop Nut, M-4	1
8	335-93-6	Screw, Socket Hd. 8-32 x 3/8	2

**\* Adapters not Included**

Required Adapters for use with each Tool Spindle:  
 Standard Tool Head (all types) .... 54-26021-1  
 Heavy Duty Tool Head..... Not Required  
 Fiber Cutter Tool Head ..... 54-26020-3



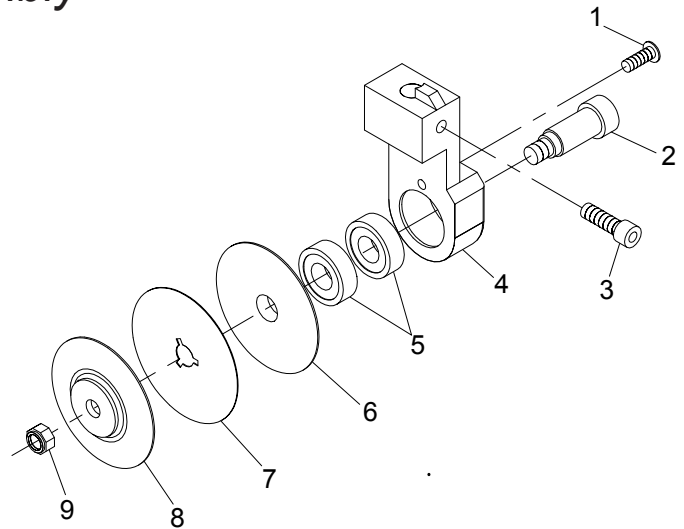
## Tool Options

### 2.36" (60mm) Round Knife Assembly

H9-30072

ITEM	PART No.	DESCRIPTION	QTY
1	318-102-6	Screw, Pan Hd, #10-32 x 3/8	1
2	54-26086	Knife Clamp Bolt	1
3	337-34-8	Screw, Socket 1/4-20 x 1/2	1
4	54-26083	Knife Holder, 3"	1
5	67-26087	Bearing, Special	2
6	54-26122	.035 Limit Mounting Disc	1
	54-26122-1	.075 Limit Mounting Disc	1
7	67-26063	2.36" (60 mm) Round Knife	1
8	54-26121	.035 Limit Clamp Disc	1
	54-26121-1	.075 Limit Clamp Disc	1
9	211-36	Stop Nut, 5/16-18	1

\*Adapters not Required



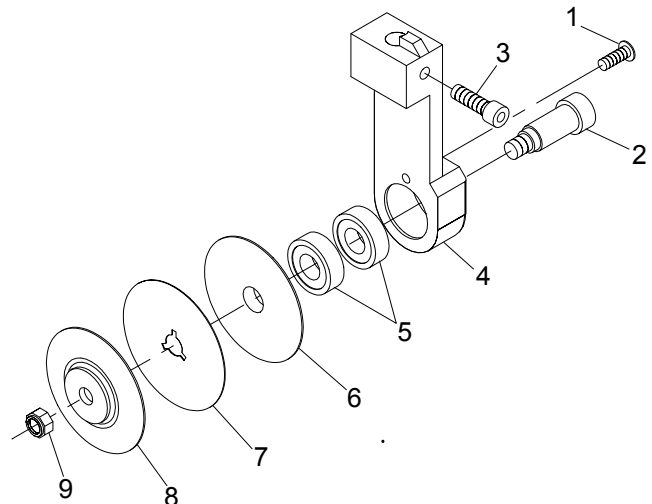
## Tool Options

### 2.36" (60mm) Extended Round Knife Assembly

H9-30073

ITEM	PART No.	DESCRIPTION	QTY
1	318-102-6	Screw, Pan Hd, #10-32 x 3/8	1
2	54-26086	Knife Clamp Bolt	1
3	337-34-8	Screw, Socket 1/4-20 x 1/2	1
4	54-26083-1	Knife Holder, 3" Extended	1
5	67-26087	Bearing, Special	2
6	54-26122	.035 Limit Mounting Disc	1
	54-26122-1	.075 Limit Mounting Disc	1
7	67-26063	2.36" (60 mm) Round Knife	1
8	54-26121	.035 Limit Clamp Disc	1
	54-26121-1	.075 Limit Clamp Disc	1
9	211-36	Stop Nut, 5/16-18	1

\*Adapters not Required



## Tool Options

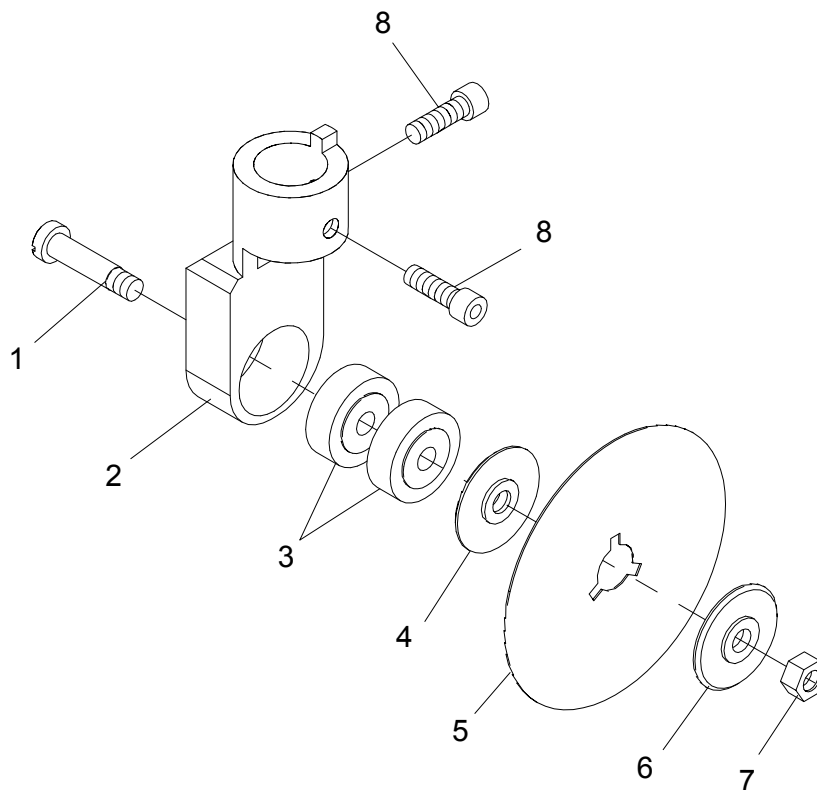
### 2.36" (60mm) Round Knife Assembly (Short)

H9-30094

ITEM	PART No.	DESCRIPTION	QTY
1	54-26225	Knife Bolt	1
2	54-26973	Knife Holder, Short, 3"	1
3	67-26099	Bearing, Special	2
4	54-26974	Max Limit Mntg Disc (std)	1
5	67-26063	2.36" (60 mm) Round Knife	1
6	54-26975	Max Limit Clp Disc (std)	1
7	211-M4	Stop Nut, M-4	1
8	335-93-6	Screw, Socket Hd. 8-32 x 3/8	2

**\* Adapters not Included**

Required Adapters for use with each Tool Spindle:  
Standard Tool Head (all types).... 54-26021-1  
Heavy Duty Tool Head..... Not Required  
Fiber Cutter Tool Head ..... 54-26020-3

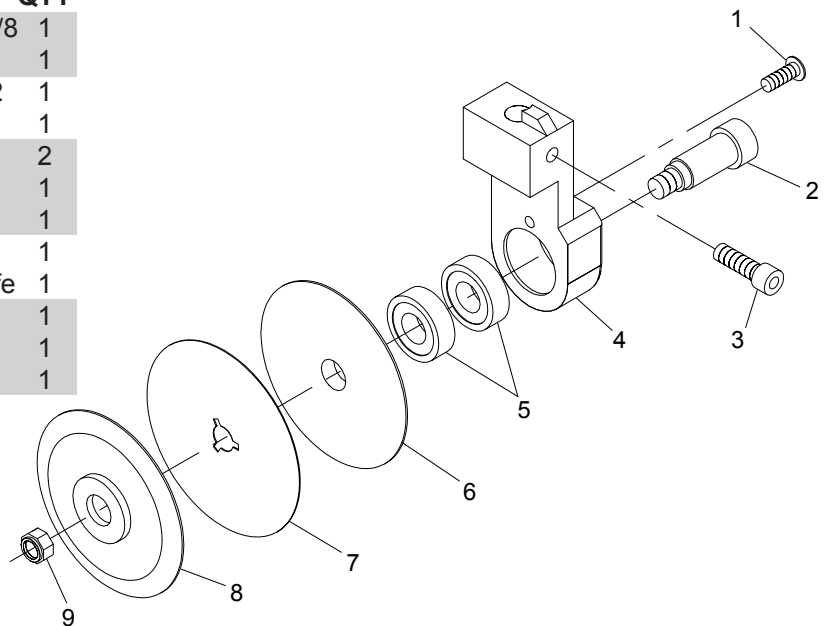


**Tools for Fiber Cutter  
Tool Head Only**

## 3" (75mm) Round Knife Assembly, Fiber Hd. H9-30074

ITEM	PART No.	DESCRIPTION	QTY
1	318-102-6	Screw, Pan Hd, #10-32 x 3/8	1
2	54-26086	Knife Clamp Bolt	1
3	337-34-8	Screw, Socket 1/4-20 x 1/2	1
4	54-26083	Knife Holder, 3"	1
5	67-26087	Bearing, Special	2
6	54-26084	.035 Limit Mounting Disc	1
	54-26084-1	.075 Limit Mounting Disc	1
7	67-26119	3" (75 mm) Round Knife	1
	67-26119 M2	3" (75 mm) M2 Round Knife	1
8	54-26085	.035 Limit Clamp Disc	1
	54-26085-1	.075 Limit Clamp Disc	1
9	211-36	Stop Nut, 5/16-18	1

\*Adapters not Required



## Tool Options

## 3" (75mm) Ext. Round Knife Assembly, Fiber Hd. H9-30075

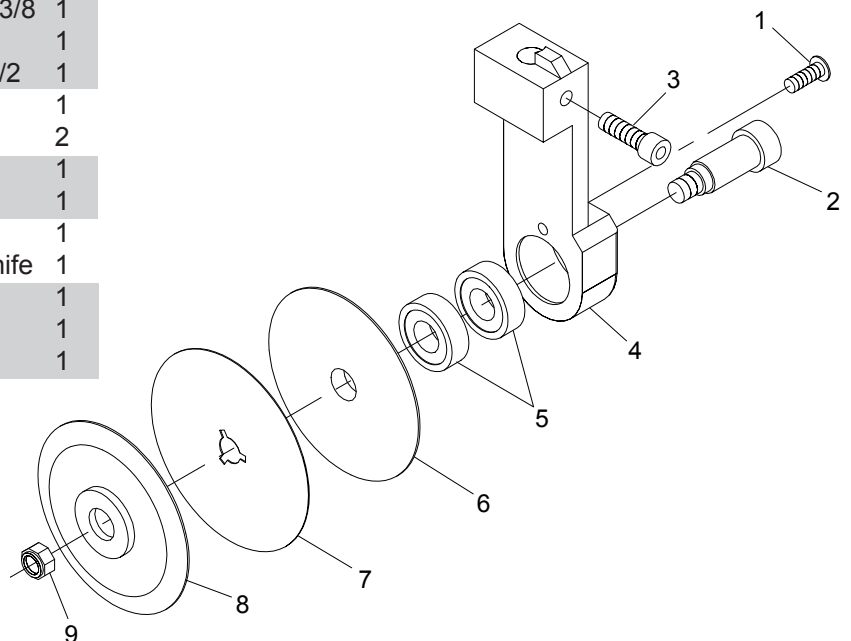
ITEM	PART No.	DESCRIPTION	QTY
1	318-102-6	Screw, Pan Hd, #10-32 x 3/8	1
2	54-26086	Knife Clamp Bolt	1
3	337-34-8	Screw, Socket 1/4-20 x 1/2	1
4	54-26083-1	Knife Holder, 3" Extended	1
5	67-26087	Bearing, Special	2
6	54-26084	.035 Limit Mounting Disc	1
	54-26084-1	.075 Limit Mounting Disc	1
7	67-26119	3" (75 mm) Round Knife	1
	67-26119 M2	3" (75 mm) M2 Round Knife	1
8	54-26085	.035 Limit Clamp Disc	1
	54-26085-1	.075 Limit Clamp Disc	1
9	211-36	Stop Nut, 5/16-18	1

\*Adapters not Required



### Caution

Improper depth limiters may cause damage to the cutting surface.





## Tool Options

### 3" (75mm) Round Knife Assembly

#### H9-30074-2

ITEM	PART No.	DESCRIPTION	QTY
1	318-102-6	Screw, Pan Hd, #10-32 x 3/8	1
2	54-26086	Knife Clamp Bolt	1
3	337-34-8	Screw, Socket 1/4-20 X 1/2	1
4	54-26083-2	Knife Mtg, 3" Round Cutter	1
5	67-26087	Bearing, Special	2
6	54-26084	.035 Limit Mounting Disc	1
	54-26084-1	.075 Limit Mounting Disc	1
7	67-26119	3" (75 mm) Round Knife	1
	67-26119 M2	3" (75 mm) M2 Round Knife	1
8	54-26085	.035 Limit Clamp Disc	1
	54-26085-1	.075 Limit Clamp Disc	1
9	211-36	Stop Nut, 5/16-18	1

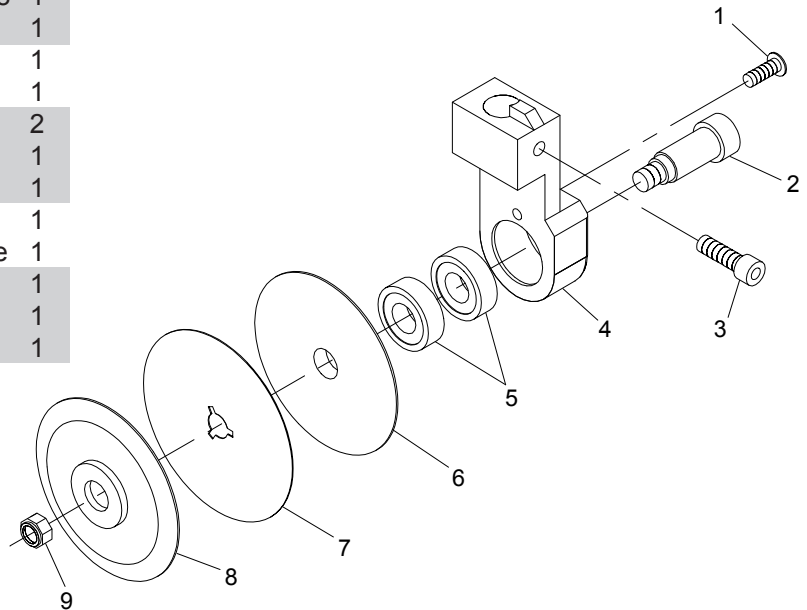
\*Adapters not Required



#### Caution

Improper depth limiters may cause damage to the cutting surface.

*Blade Changing Station 68-26141-1 Optional*



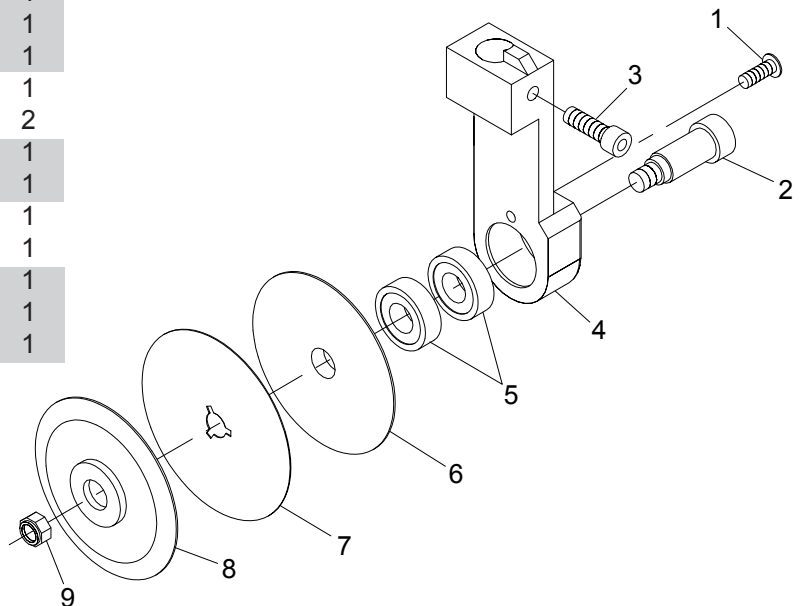
## Tool Options

### 3" (75mm) Extended Round Knife Assembly

#### H9-30075-3

ITEM	PART No.	DESCRIPTION	QTY
1	318-102-6	Screw, Pan Hd, #10-32 x 3/8	1
2	54-26086	Knife Clamp Bolt	1
3	337-34-8	Screw, Socket 1/4-20 x 1/2	1
4	54-26083-3	Knife Mtg, 3" Ext Rnd. Cutter	1
5	67-26087	Bearing, Special	2
6	54-26084	.035 Limit Mounting Disc	1
	54-26084-1	.075 Limit Mounting Disc	1
7	67-26119	3" (75 mm) Round Knife	1
	67-26119 M2	3" (75 mm) M2 Round Knife	1
8	54-26085	.035 Limit Clamp Disc	1
	54-26085-1	.075 Limit Clamp Disc	1
9	211-36	Stop Nut, 5/16-18	1

\*Adapters not Required



## Extended Drag Knife Assembly

**H9-30051-1** (.02 Thick x 30 Degree Angle)

**H9-30052-1** (.04 Thick x 30 Degree Angle)

**H9-30053-1** (.02 Thick x 45 Degree Angle)

**H9-30054-1** (.04 Thick x 45 Degree Angle)

**H9-30057-1** (.04 Thick x 55 Degree Angle)

**H9-30058-1** (.02 Thick x 55 Degree Angle)

ITEM	PART No.	DESCRIPTION	QTY
1	54-26111-1	Drag Knife Holder, Extended	1
2	335-93-6	Screw, Socket Hd. 8-32 x 3/8	2
3	347-93-5	Setscrew, 8-32 x 5/16	1
4	348-94-12	Setscrew, #8-36 x 3/4	1
5	54-26011-1	Drag Knife, .02 thk x 30 deg	1
	54-26011	Drag Knife, .04 thk x 30 deg	1
	54-26011-2	Drag Knife, .02 thk x 45 deg	1
	54-26011-3	Drag Knife, .04 thk x 45 deg	1
	54-26011-5	Drag Knife, .02 thk x 55 deg	1
	54-26011-4	Drag Knife, .04 thk x 55 deg	1
6	54-26112	Drag Knife Foot (std)	1
	54-26112-1	Drag Knife Foot Carpet Style (optional)	1
	54-26112-W	Drag Knife Foot, Wide (optional)	1
	54-26112-5	Drag Knife Foot, UHMW	1
	54-26112-5W	Drag Knife Foot, Wide UHMW	1
7	347-93-5	Setscrew, Brass Tip#8-32 x 5/16	2

\* **Adapters not Included**

Required Adapters for use with each Tool Spindle:  
 Standard Tool Head (all types).... 54-26021-1  
 Heavy Duty Tool Head..... Not Required  
 Fiber Cutter Tool Head ..... 54-26020-3

### Blade Changing Station 68-26141 Optional

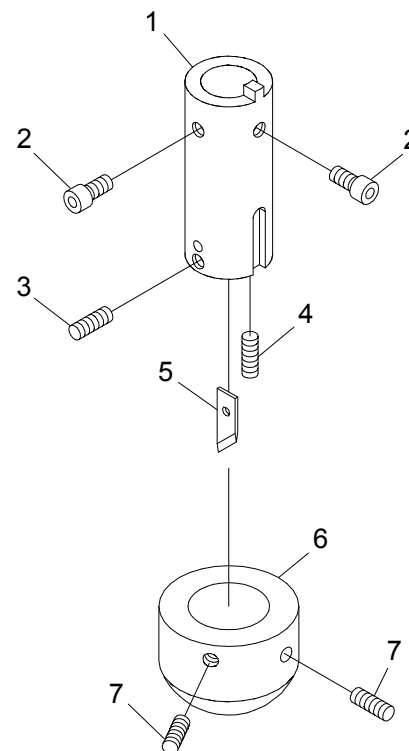
Optional Knife Material & Surface Treatments Available.

To order M2 steel knife material add "M2" after the part number.

To order M2 steel knife material with -Z- Surface Treatment add  
 "M2Z" after the part number.

To order M2 steel knife material with -Y- Surface Treatment add  
 "M2Y" after the part number.

To order VC Carbide knife material add "VC" after the part number.



### Optional Blade Styles

ITEM	PART No.	DESCRIPTION	QTY
5	54-26862-3020	Flat Tip, .02 thk x 30 deg	1
	54-26862-3040	Flat Tip, .04 thk x 30 deg	1
	54-26862-4520	Flat Tip, .02 thk x 45 deg	1
	54-26862-4540	Flat Tip, .04 thk x 45 deg	1
	54-26862-5520	Flat Tip, .02 thk x 55 deg	1
	54-26862-5540	Flat Tip, .05 thk x 55 deg	1
	54-27298	Drag Knife, .038/30/.68 w/Hole	1
	54-27298-1	Drag Knife, .020/30/.68 w/Hole	1
	54-27298-2	Drag Knife, .020/45/.68 w/Hole	1
	54-27298-3	Drag Knife, .038/45/.68 w/Hole	1
	54-27298-4	Drag Knife, .040/55/.79 w/Hole	1
	54-27298-5	Drag Knife, .020/55/.79 w/Hole	1

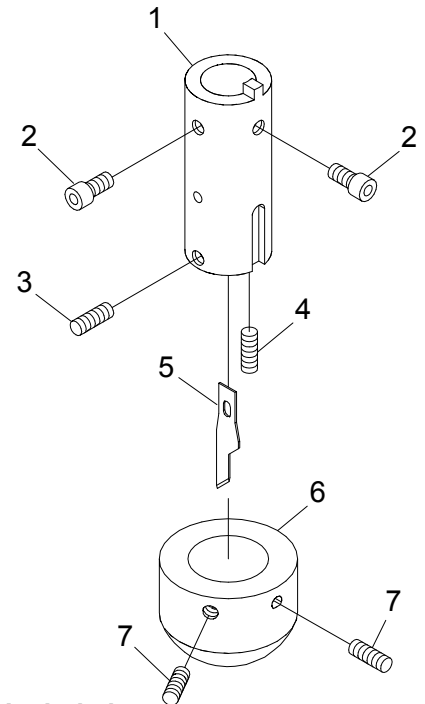
> Ref: thk/angle/length <

## Tool Options

### Extended X-Acto Drag Knife Assembly

H9-30064-1 (#16 X-Acto)

ITEM	PART No.	DESCRIPTION	QTY
1	54-26111-3	X-Acto Knife Holder, Extended	1
2	335-93-6	Screw, Socket Hd. 8-32 x 3/8	2
3	347-93-5	Setscrew, Brass Tip #8-32 x 5/16	1
4	348-94-12	Setscrew, Special Oval Point, #8-36 x 3/4	1
5	67-12792	#16 X-Acto Drag Knife	1
6	54-26112	Drag Knife Foot (std)	1
	54-26112-1	Drag Knife Foot Carpet Style (optional)	1
	54-26112-W	Drag Knife Foot, Wide (optional)	1
	54-26112-5	Drag Knife Foot, UHMW	1
	54-26112-5W	Drag Knife Foot, Wide UHMW	1
7	347-93-5	Setscrew, Brass Tip#8-32 x 5/16	2



\* Adapters not Included

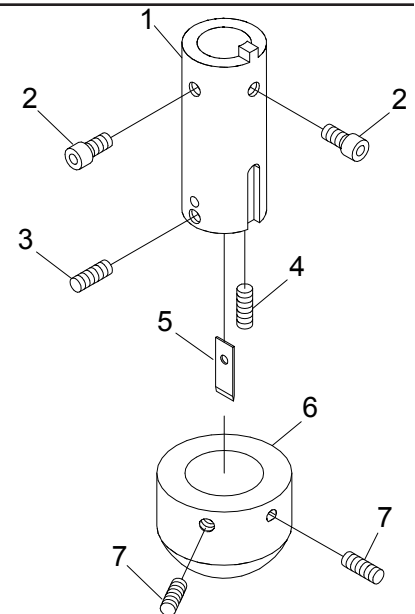
Required Adapters for use with each Tool Spindle:  
 Standard Tool Head (all types) .... 54-26021-1  
 Heavy Duty Tool Head..... Not Required  
 Fiber Cutter Tool Head ..... 54-26020-3

**Blade Changing Station 68-26141 Optional**

### Extended Slitter Knife Assembly

H9-30055-1 (.04 thk)

ITEM	PART No.	DESCRIPTION	QTY
1	54-26111-1	Drag Knife Holder, Extended	1
2	335-93-6	Screw, Socket Hd. 8-32 x 3/8	2
3	347-93-5	Setscrew, Brass Tip #8-32 x 5/16	1
4	348-94-12	Setscrew, Special Oval Point, #8-36 x 3/4	1
5	54-26012	Slitter Knife, .04 Thick(Square)	1
6	54-26112	Drag Knife Foot (std)	1
	54-26112-1	Drag Knife Foot Carpet Style (optional)	1
	54-26112-W	Drag Knife Foot, Wide (optional)	1
	54-26112-5	Drag Knife Foot, UHMW	1
	54-26112-5W	Drag Knife Foot, Wide UHMW	1
7	347-93-5	Setscrew, Brass Tip#8-32 x 5/16	2



\* Adapters not Included

Required Adapters for use with each Tool Spindle:  
 Standard Tool Head (all types) .... 54-26021-1  
 Heavy Duty Tool Head..... Not Required  
 Fiber Cutter Tool Head ..... 54-26020-3

## Tool Options

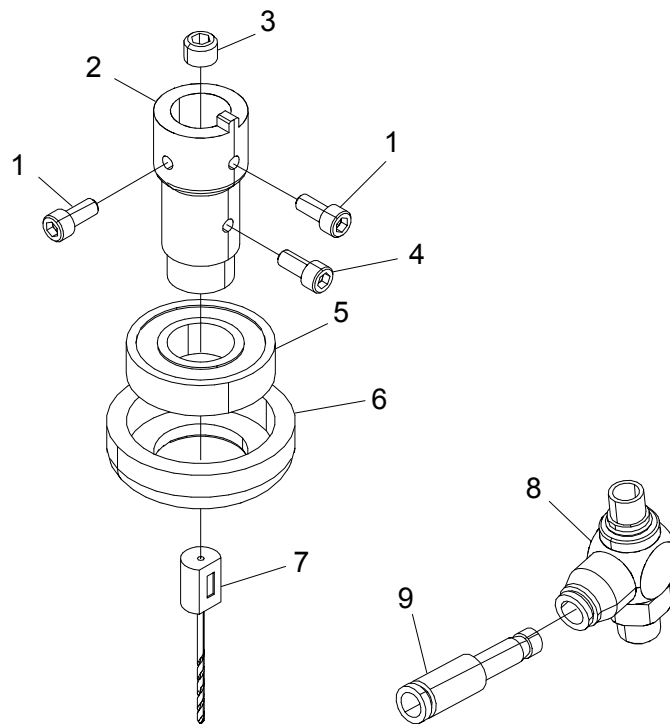
### Depth Limiting Drill Tool Assembly

1/16 Drill Dia. x 3/4 Deep

H9-30102-1

ITEM	PART No.	DESCRIPTION	QTY
1	54-26791	Drill Chuck Holder	1
2	335-93-6	Screw, Socket Hd. #8-32 x 3/8	2
3	342-36-4	Setscrew, Hex 5/16-32 x 1/4	1
4	335-93-6	Screw, Socket Hd. #8-32 x 3/8	1
5	9020-0202	Rotate Bearing	1
6	54-27548	Depth Limit Foot	1
7	54-27549-1	Drill Bit, 1/16 Dia.	1
8	100-18-37	Speed Control Valve	1
9	100-12-1	Reducer, 5/32 to 1/4	1

\* Adapters not Included



Required Adapters for use with each Tool Spindle:

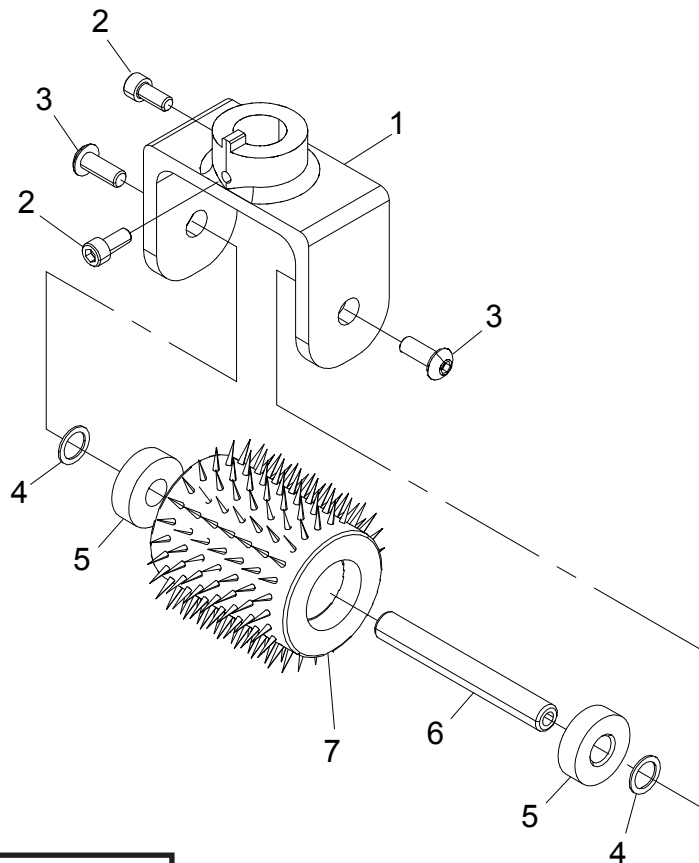
Standard Tool Head (all types).... 54-26021-1  
Heavy Duty Tool Head..... Not Required  
Fiber Cutter Tool Head ..... 54-26020-3

## Tool Options

### Pin Perforating Assembly 2" Wide x 1/4" Sq. Pattern H9-30101-1

ITEM	PART No.	DESCRIPTION	QTY
1	54-27235	Tool Holder, Pin Perf	1
2	335-93-6	Screw, Socket Hd. #8-32 x 3/8	2
3	333-102-8	Screw, Button Hd. #10-32 x 1/2	2
4	CH-83	Washer, Thin	2
5	--	Bearing	2
6	54-27252	Axial	1
7	54-27236	Pin Perf Tool, 2" x 1/4"sq	1

\* Adapters not Included



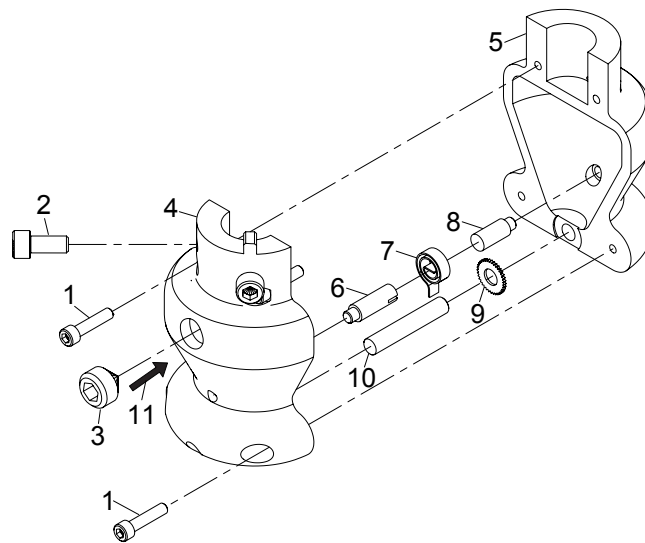
Required Adapters for use with each Tool Spindle:	
Standard Tool Head (all types)....	54-26021-1
Heavy Duty Tool Head.....	Not Required
Fiber Cutter Tool Head .....	54-26020-3

# Tool Options

## Chalk Marking Tool

### H9-30122-1

ITEM	PART No.	DESCRIPTION	QTY
1	335-81-8	Screw, Skt. Hd. #4-40 X 1/2	4
2	335-93-6	Screw, Skt. Hd. #8-32 X 3/8	2
3	342-38-6	Screw, Skt. Set 3/8-16 X 3/8"	1
4	54-28780	Chalk Tool Holder-1	1
5	54-28781	Chalk Tool Holder-2	1
6	54-28847	Spring Holder Shaft	1
7	54-28846	Chalk Tool Coil Spring	1
8	54-28848	Spring Retainer Shaft	1
9	54-28783	Chalk Tool Disc	1
10	54-28840	Lower Pin, Chalk Tool	1
11	67-27235-1	Chalk Tool Refill, Violet	1
	67-27235-2	Chalk Tool Refill, Blue	1
	67-27235-3	Chalk Tool Refill, White	1



#### \* Adapters not Included

Required Adapters for use with each Tool Spindle:	
Standard Tool Head (all types) ....	54-26021-1
Heavy Duty Tool Head.....	Not Required
Fiber Cutter Tool Head .....	54-26020-3

**Blade Changing Station 68-26141 Optional**

#### TOOL OPERATING INSTRUCTIONS

- Set Tool Offset To 45°
- Check Alignment Before Operating
- Set Tool Boost Up Time To 100 Milliseconds
- Set Tool Boost Down Time To 0 Milliseconds
- Set Tool Pressure To 5 Psi

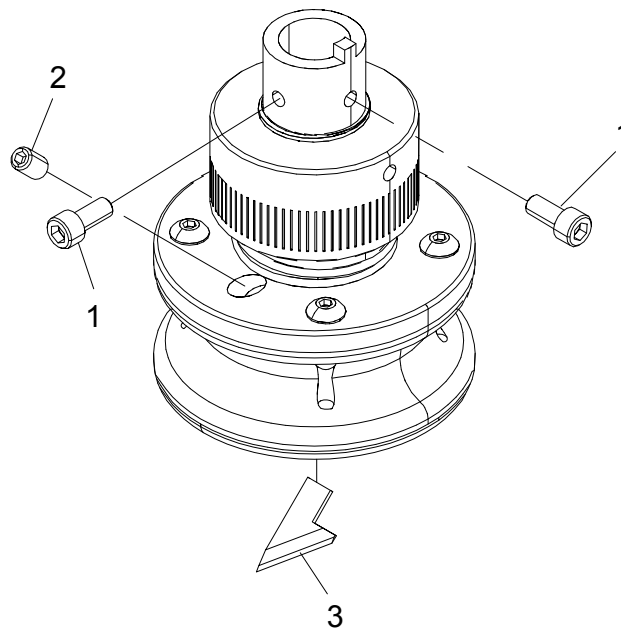
®

## 45° Angle Plunge Assembly

### 5/16" Max. Material

### H9-30099-1

ITEM	PART No.	DESCRIPTION	QTY
1	335-93-6	Screw, Socket Hd. #8-32 x 3/8	2
2	342-102-5	Setscrew, Hex #10-32 x 5/16	1
3	54-26011-11	Drag Knife, .040 thk x 45°	1
	54-26011-12	Drag Knife, .040 thk x 45°SB( std)	1
	54-26011-14	Drag Knife, .020 thk x 45°SB	1



\* **Adapters not Included**

Required Adapters for use with each Tool Spindle:  
Standard Tool Head (all types).... 54-26021-1  
Heavy Duty Tool Head..... Not Required  
Fiber Cutter Tool Head ..... 54-26020-3

## Tool Options

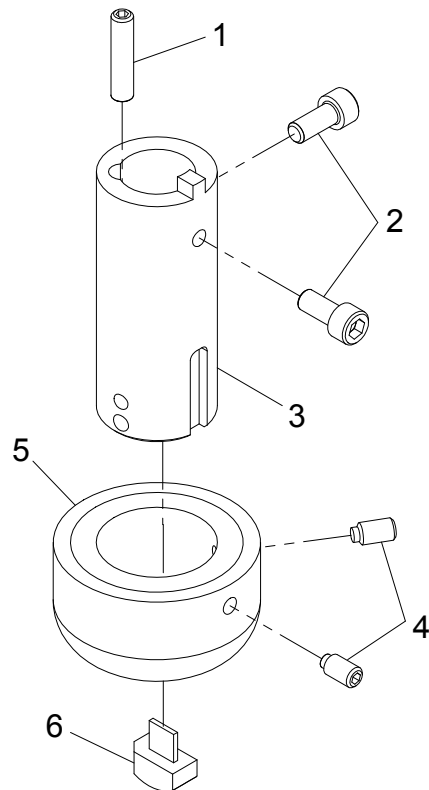
### Creasing Drag Assembly

*1/4" (.250") Wide - H9-30109-1*

*(.040") Wide - H9-30108-1*

ITEM	PART No.	DESCRIPTION	QTY
1	348-94-12	Oval Nylok #8-36 SS x 3/4"	1
2	335-93-6	Scr. Socket Hd. #8-32 x 3/8"	2
3	54-26111-1	Drag Knife Holder Extension	1
4	347-93-5	Brass Tip SS #8-36 x 3/4"	2
5	54-26112-4	Foot, .25 Wide Creasing Tool Hd.	1
	54-26112-3	Foot, .04 Wide Creasing Tool Hd.	1
6	54-26011-16	.25 Wide Creasing Blade	1
	54-26011-15	.04 Wide Creasing Blade	1

\* Adapters not Included



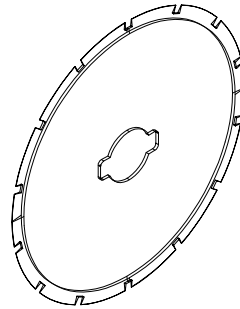
Required Adapters for use with each Tool Spindle:

Standard Tool Head (all types).... 54-26021-1  
Heavy Duty Tool Head..... Not Required  
Fiber Cutter Tool Head ..... 54-26020-3



## Perforating Round Blades

Consult Factory for Availability



**1" (28mm)**  
**2" (45mm)**  
**2.36" (60mm)**  
**3" (75mm)**

ITEM	PART No.	DESCRIPTION	QTY
1	67-26583-4-03	28mm(1.0") Perf. Blade 4/in,.03	1
	67-26584-4-03	45mm(2.0") Perf. Blade 4/in,.03	1

> Ref: 4 Cuts per Inch, .03" No Cut <

## Tool Options

### Wire Brush Buffing Assembly H9-30092-1

ITEM	PART No.	DESCRIPTION	QTY
1	54-26013-7	Buff Holder, 1/4" Base	1
2	335-93-6	Screw, Socket Hd. 8-32 x 3/8	2
3	67-26512-1	Buffing Tool, 1/2" Path, .014 Wire	1
	67-26512-2	Buffing Tool, 3/4" Path, .014 Wire	1
	67-26512-3	Buffing Tool, 1" Path, .014 Wire (std)	1

\* Adapters not Included

