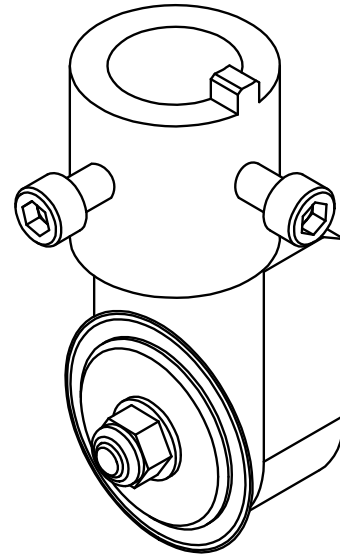


Eastman Automated Cutting Tools Illustrated Parts List

Features:

***Round Knife
Drag Knife
1" Drag Knife
X-Acto Drag Knife
Slitter Knife
Hole Punch
"V" Notch
"V" Knife Cutter
Chalk Marking Tool
Corner Punch
Carpet Cutter
Creasing Drag Assembly
Depth Scales
& Tool Changing Stations***

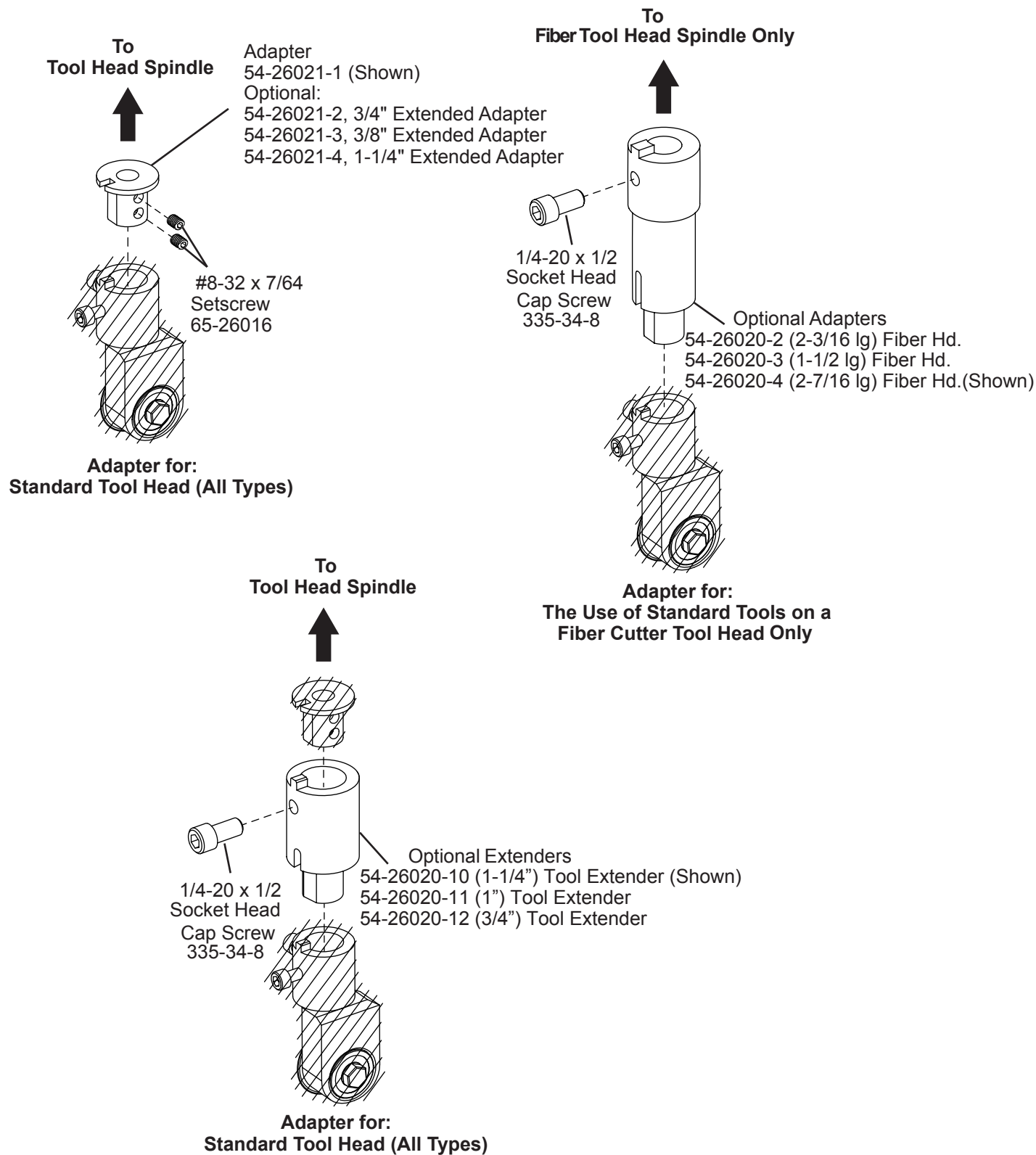


1" (28mm)
Round Knife Assembly
(Shown)

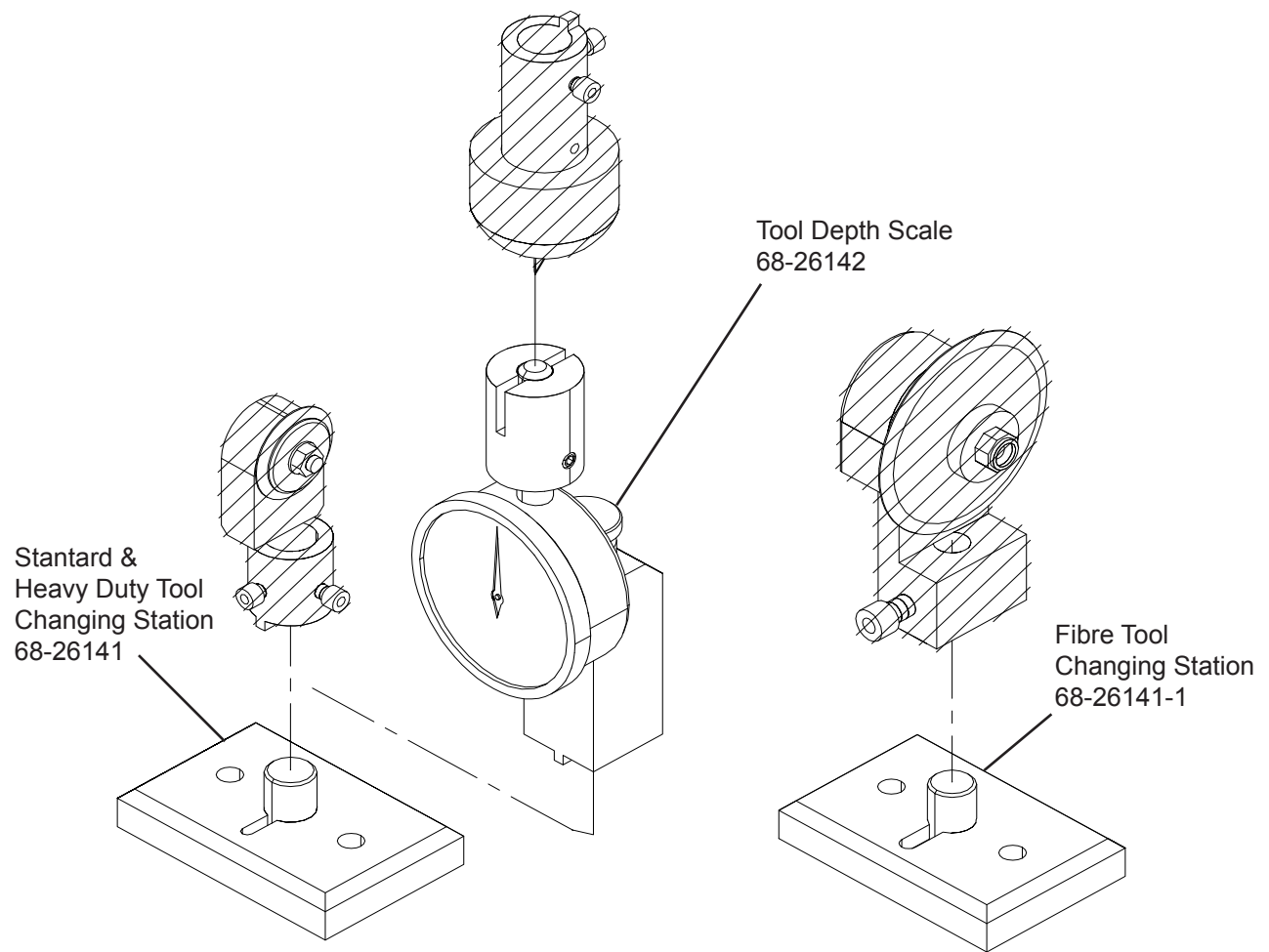
Table of Contents

Tool Adapters & Tool Extenders.....	3
Tool Changing Stations & Tool Depth Scale	4
1" (28mm) Round Knife Assembly.....	5
2" (45mm) Round Knife Assembly.....	6
2" (45mm) Pinking Knife Assembly	7
2" (45mm) Wave Knife Assembly	7
2.36" (60mm) Round Knife Assembly.....	8
2.36" (60mm) Extended Round Knife Assembly	8
2.36" (60mm) Round Knife Assembly (Short).....	9
3" (75mm) Round Knife Assembly, Fiber Hd.	10
3" (75mm) Ext. Round Knife Assembly, Fiber Hd.	10
3" (75mm) Round Knife Assembly.....	11
3" (75mm) Extended Round Knife Assembly	11
Extended Drag Knife Assembly	12
Extended X-Acto Drag Knife Assembly	13
Extended Slitter Knife Assembly.....	13
Hole Punch Assembly.....	14
Punch Sizing Chart.....	14
Heavy Duty Hole Punch Assembly.....	15
Corner Punch Assembly	16
"V" Notch Punch Assembly.....	16
Adjustable Carpet Cutter Assembly.....	17
80° V-Knife Cutter Assembly	18
1" Tall Drag Knife Assembly.....	19
Drill Tool Assembly	19
Fly Cutter Assembly.....	20
Slitter Assembly	21
Depth Limiting Drill Tool Assembly	22
Depth Limiting Drill Tool Assembly, End Mill Style	23
Pin Perforating Assembly	24
Chalk Marking Tool.....	25
45° Angle Plunge Assembly	26
Creasing Drag Assembly	27
Perforating Round Blades	28
Wire Brush Buffing Assembly	28

Tool Adapters & Tool Extenders



Tool Changing Stations & Tool Depth Scale



Tool Options

1" (28mm) Round Knife Assembly

H9-30069

ITEM	PART No.	DESCRIPTION	QTY
1	54-26225	Knife Bolt	1
2	54-26098-1	Knife Holder, 1"	1
3	67-26099	Bearing, Special	2
4	54-26099	Limiting Disc (std)	2
	54-26430	.010 Limiting Disc (option)	2
	54-26387	.015 Limiting Disc (option)	2
	54-26431	.020 Limiting Disc (option)	2
	54-26101	.030 Limiting Disc (option)	2
	54-26101-1	.030 Limiting Disc, Wide(option)	2
	54-26451	.040 Limiting Disc (option)	2
	54-26100	.050 Limiting Disc (std option)	2
	54-26100-1	.050 Limiting Disc, Wide(option)	2
	54-26394	.060 Limiting Disc (std option)	2
	54-26395	.070 Limiting Disc (option)	2
*5	C280	1" (28 mm) Round Knife	1
	67-02953-1	28mm(1.0") Rd. Knife, Carbide	1
	54-28665	1" x .04 Creasing Blade, Full	1
6	211-M4	Stop Nut, M-4	1
7	335-93-6	Screw, Socket Hd. 8-32 x 3/8	2

* = Includes 2 per pack

* Adapters not Included

Required Adapters for use with each Tool Spindle:
 Standard Tool Head (all types) 54-26021-1
 Heavy Duty Tool Head..... Not Required
 Fiber Cutter Tool Head 54-26020-3



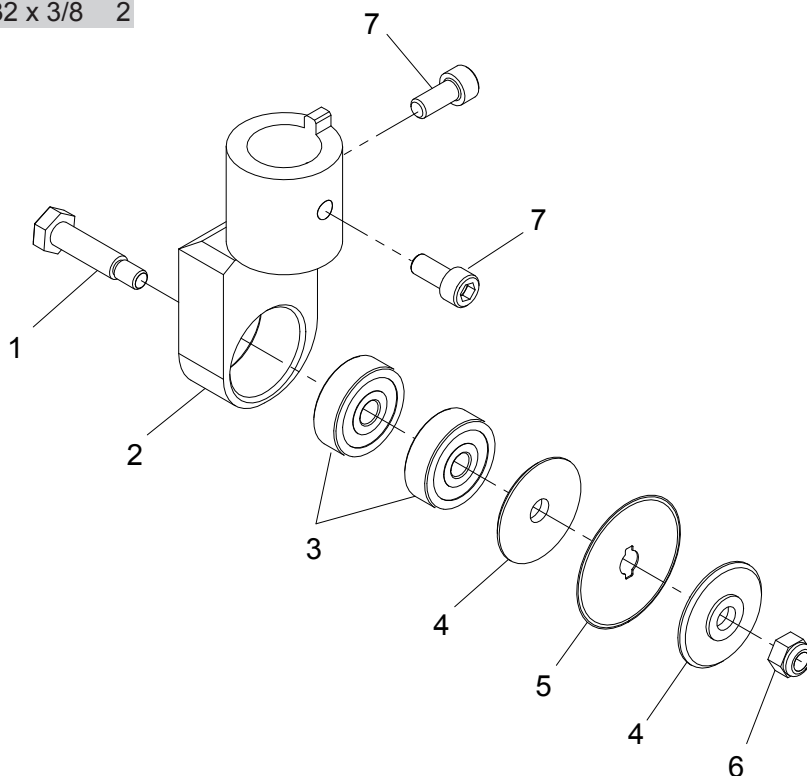
Caution

Improper depth limiters may cause damage to the cutting surface.



Warning

Always handle knives with care.
 Safely dispose of used knife.



2" (45mm) Round Knife Assembly H9-30070

ITEM	PART No.	DESCRIPTION	QTY
1	54-26225	Knife Bolt	1
2	54-26102	Knife Holder, 2"	1
3	67-26099	Bearing, Special	2
4	54-26103	.135 Limit Mntg Disc (std)	1
	54-26374	.010 Limit Mntg Disc (option)	1
	54-26432	.015 Limit Mntg Disc (option)	1
	54-26434	.020 Limit Mntg Disc (option)	1
	54-26105	.025 Limit Mntg Disc (option)	1
	54-26447	.030 Limit Mntg Disc (std option)	1
	54-26106	.040 Limit Mntg Disc (option)	1
	54-26106-1	.040 Limit Wide Mntg Disc	1
	54-26449	.045 Limit Mntg Disc (option)	1
	54-26399	.050 Limit Mntg Disc (std option)	1
	54-26348	.060 Limit Mntg Disc (option)	1
	54-26348-1	.060 Limit Wide Mntg Disc	1
	54-26445	.070 Limit Mntg Disc (std option)	1
	54-26969	.100 Limit Mntg Disc (option)	1
	54-26477	.175 Limit Mntg Disc (option)	1
	54-27025	.312 Limit Mntg Disc (option)	1
	54-27894	.380 Limit Mntg Disc (option)	1
	54-26918	.438 Limit Mntg Disc, Max(option)	1
5	C450	2" (45 mm) Round Knife	1
	54-02994-1	45mm(2.0") Rd. Knife, Carbide	1
6	54-26104	.135 Limit Clp Disc (std)	1
	54-26375	.010 Limit Clp Disc (option)	1
	54-26433	.015 Limit Clp Disc (option)	1
	54-26435	.020 Limit Clp Disc (option)	1
	54-26107	.025 Limit Clp Disc (option)	1
	54-26448	.030 Limit Clp Disc (std option)	1
	54-26108	.040 Limit Clp Disc (option)	1
	54-26108-1	.040 Limit Wide Clp Disc	1
	54-26450	.045 Limit Clp Disc (option)	1
	54-26400	.050 Limit Clp Disc (std option)	1
	54-26349	.060 Limit Clp Disc (option)	1
	54-26349-1	.060 Limit Wide Clp Disc(option)	1
	54-26446	.070 Limit Clp Disc (std option)	1
	54-26970	.100 Limit Clp Disc (option)	1
	54-26478	.175 Limit Clp Disc (option)	1
	54-27026	.312 Limit Clp Disc (option)	1
	54-27895	.380 Limit Clp Disc (option)	1
	54-26919	.438 Limit Clp Disc, Max(option)	1
7	211-M4	Stop Nut, M-4	1
8	335-93-6	Screw, Socket Hd. 8-32 x 3/8	2

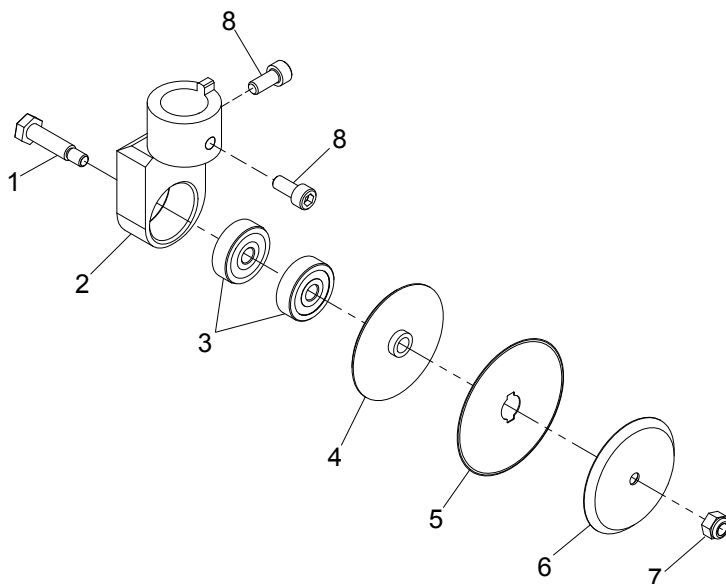
* Adapters not Included

Required Adapters for use with each Tool Spindle:
 Standard Tool Head (all types).... 54-26021-1
 Heavy Duty Tool Head..... Not Required
 Fiber Cutter Tool Head 54-26020-3



Caution

Improper depth limiters may cause damage to the cutting surface.



Warning

Always handle knives with care.
 Safely dispose of used knife.

Blade Changing Station 68-26141 Optional

Tool Options

2" (45mm) Pinking Knife Assembly H9-30076



Warning

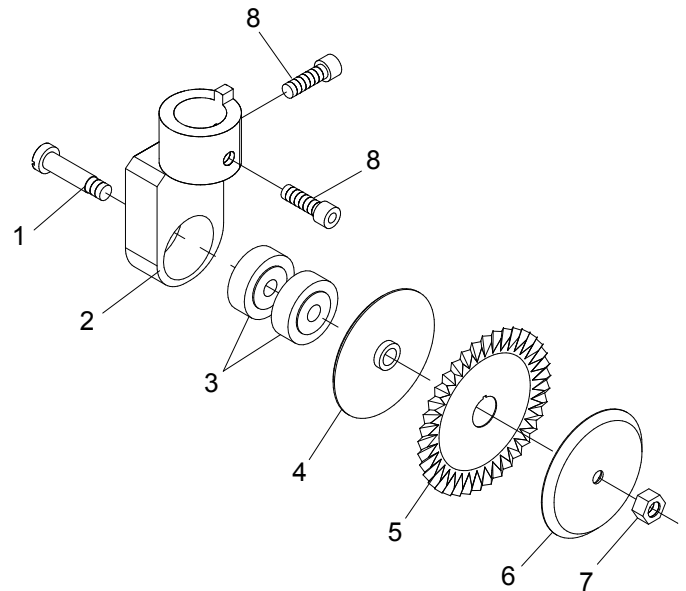
Always handle knives with care.
Safely dispose of used knife.

ITEM	PART No.	DESCRIPTION	QTY
1	54-26225	Knife Bolt	1
2	54-26102	Knife Holder, 2"	1
3	67-26099	Bearing, Special	2
4	54-26424	Pinking Blade Mound Disk	1
5	67-02954	2" (45 mm) Pinking Blade	1
6	54-26425	Pinking Blade Clamp Disc	1
7	211-M4	Stop Nut, M-4	1
8	335-93-6	Screw, Socket Hd. 8-32 x 3/8	2

* Adapters not Included

Required Adapters for use with each Tool Spindle:
Standard Tool Head (all types) 54-26021-1
Heavy Duty Tool Head..... Not Required
Fiber Cutter Tool Head 54-26020-3

Pinking Blade Pattern



Blade Changing Station 68-26141 Optional

2" (45mm) Wave Knife Assembly H9-30077



Warning

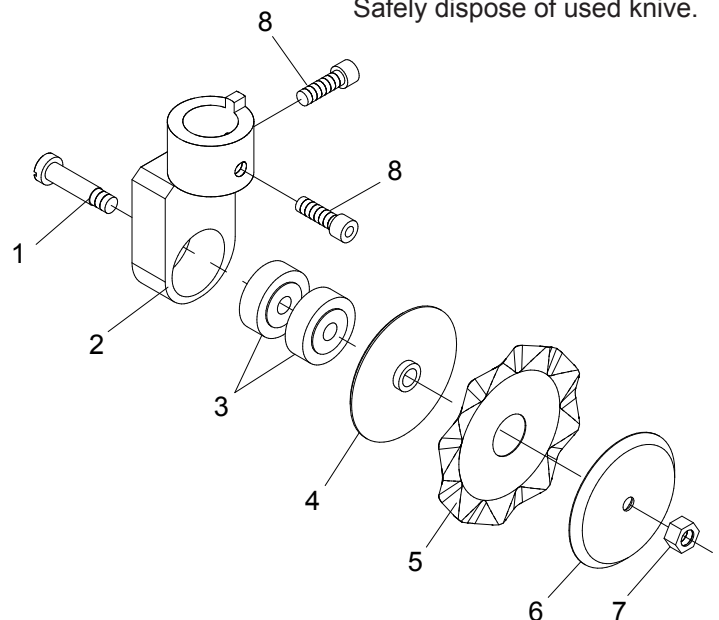
Always handle knives with care.
Safely dispose of used knife.

ITEM	PART No.	DESCRIPTION	QTY
1	54-26225	Knife Bolt	1
2	54-26102	Knife Holder, 2"	1
3	67-26099	Bearing, Special	2
4	54-26424	Pinking Blade Mound Disk	1
5	67-02955	2" (45 mm) Wave Pinking Blade	1
6	54-26425	Pinking Blade Clamp Disc	1
7	211-M4	Stop Nut, M-4	1
8	335-93-6	Screw, Socket Hd. 8-32 x 3/8	2

* Adapters not Included

Required Adapters for use with each Tool Spindle:
Standard Tool Head (all types) 54-26021-1
Heavy Duty Tool Head..... Not Required
Fiber Cutter Tool Head 54-26020-3

Wave Blade Pattern



Blade Changing Station 68-26141 Optional

Tool Options

2.36" (60mm) Round Knife Assembly H9-30072

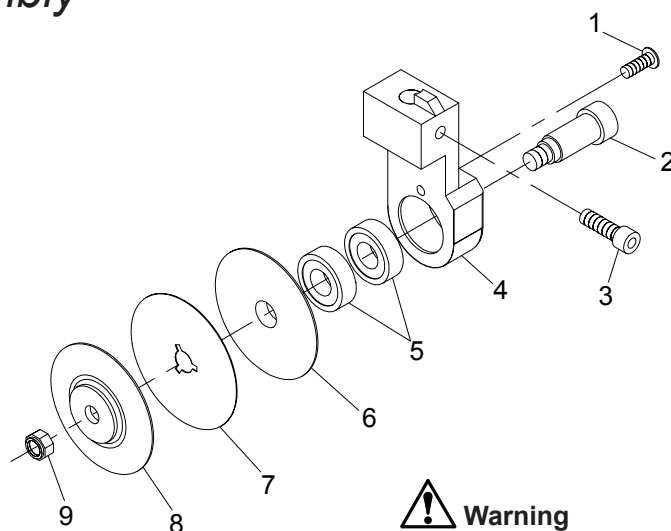
ITEM	PART No.	DESCRIPTION	QTY
1	318-102-6	Screw, Pan Hd, #10-32 x 3/8	1
2	54-26086	Knife Clamp Bolt	1
3	337-34-8	Screw, Socket 1/4-20 x 1/2	1
4	54-26083	Knife Holder, 3"	1
5	67-26087	Bearing, Special	2
6	54-26122	.035 Limit Mounting Disc	1
	54-26122-1	.075 Limit Mounting Disc	1
7	67-26063	2.36" (60 mm) Round Knife	1
8	54-26121	.035 Limit Clamp Disc	1
	54-26121-1	.075 Limit Clamp Disc	1
9	211-36	Stop Nut, 5/16-18	1

*Adapters not Required



Caution

Improper depth limiters may cause damage to the cutting surface.



Warning

Always handle knives with care.
Safely dispose of used knife.

Blade Changing Station 68-26141-1 Optional

Tool Options

2.36" (60mm) Extended Round Knife Assembly H9-30073

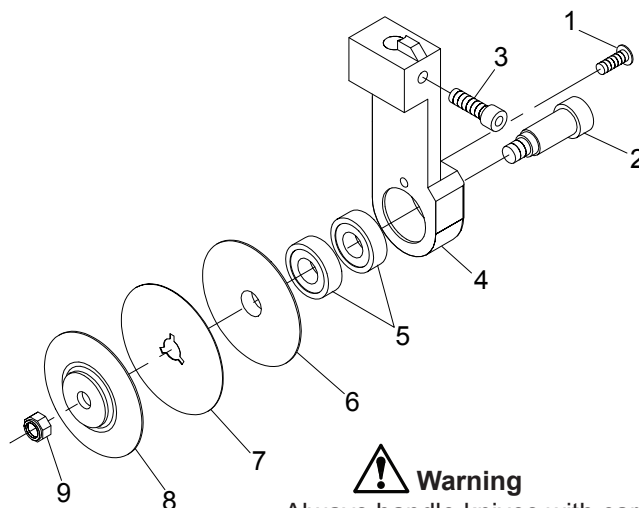
ITEM	PART No.	DESCRIPTION	QTY
1	318-102-6	Screw, Pan Hd, #10-32 x 3/8	1
2	54-26086	Knife Clamp Bolt	1
3	337-34-8	Screw, Socket 1/4-20 x 1/2	1
4	54-26083-1	Knife Holder, 3" Extended	1
5	67-26087	Bearing, Special	2
6	54-26122	.035 Limit Mounting Disc	1
	54-26122-1	.075 Limit Mounting Disc	1
7	67-26063	2.36" (60 mm) Round Knife	1
8	54-26121	.035 Limit Clamp Disc	1
	54-26121-1	.075 Limit Clamp Disc	1
9	211-36	Stop Nut, 5/16-18	1

*Adapters not Required



Caution

Improper depth limiters may cause damage to the cutting surface.



Warning

Always handle knives with care.
Safely dispose of used knife.

Blade Changing Station 68-26141-1 Optional

Tool Options

2.36" (60mm) Round Knife Assembly (Short)

H9-30094

ITEM	PART No.	DESCRIPTION	QTY
1	54-26225	Knife Bolt	1
2	54-26973	Knife Holder, Short, 3"	1
3	67-26099	Bearing, Special	2
4	54-26974	Max Limit Mntg Disc (std)	1
5	67-26063	2.36" (60 mm) Round Knife	1
6	54-26975	Max Limit Clp Disc (std)	1
7	211-M4	Stop Nut, M-4	1
8	335-93-6	Screw, Socket Hd. 8-32 x 3/8	2

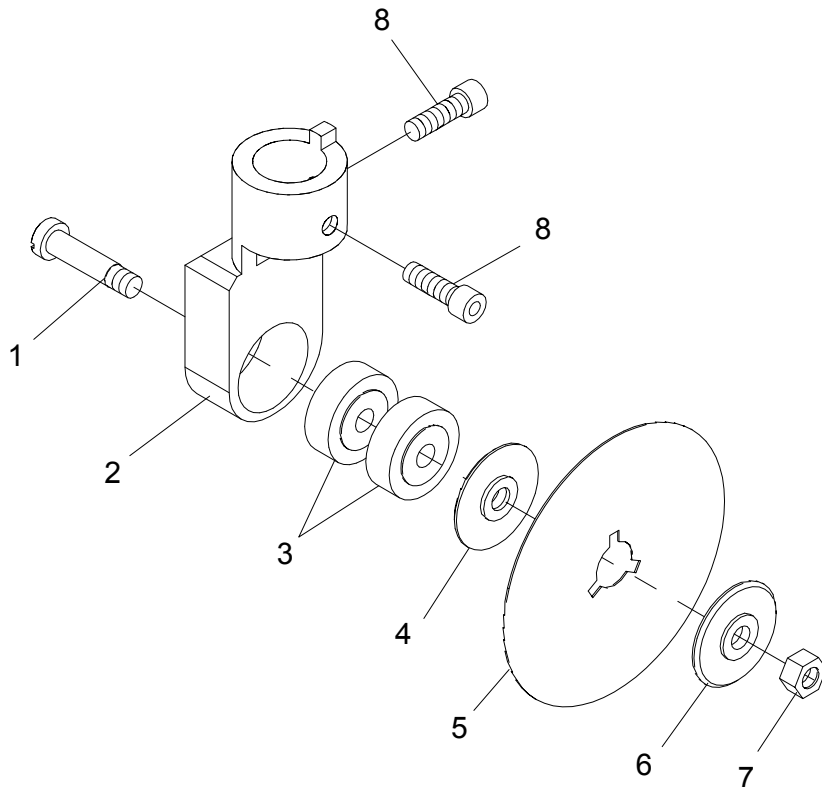
* Adapters not Included

Required Adapters for use with each Tool Spindle:
Standard Tool Head (all types).... 54-26021-1
Heavy Duty Tool Head..... Not Required
Fiber Cutter Tool Head 54-26020-3



Caution

Improper depth limiters may cause damage to the cutting surface.



Warning

Always handle knives with care.
Safely dispose of used knife.

Tool Options

3" (75mm) Round Knife Assembly, Fiber Hd. H9-30074

ITEM	PART No.	DESCRIPTION	QTY
1	318-102-6	Screw, Pan Hd, #10-32 x 3/8	1
2	54-26086	Knife Clamp Bolt	1
3	337-34-8	Screw, Socket 1/4-20 x 1/2	1
4	54-26083	Knife Holder, 3"	1
5	67-26087	Bearing, Special	2
6	54-26084	.035 Limit Mounting Disc	1
	54-26084-1	.075 Limit Mounting Disc	1
7	67-26119	3" (75 mm) Round Knife	1
	67-26119 M2	3" (75 mm) M2 Round Knife	1
8	54-26085	.035 Limit Clamp Disc	1
	54-26085-1	.075 Limit Clamp Disc	1
9	211-36	Stop Nut, 5/16-18	1

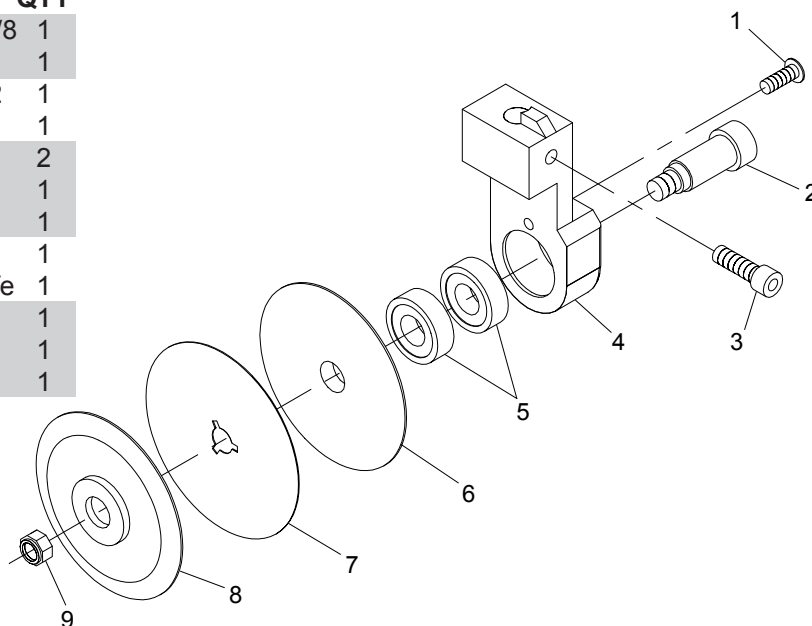
*Adapters not Required



Caution

Improper depth limiters may cause damage to the cutting surface.

Blade Changing Station 68-26141-1 Optional



Tools for Fiber Cutter
Tool Head Only

Tool Options

3" (75mm) Ext. Round Knife Assembly, Fiber Hd. H9-30075

ITEM	PART No.	DESCRIPTION	QTY
1	318-102-6	Screw, Pan Hd, #10-32 x 3/8	1
2	54-26086	Knife Clamp Bolt	1
3	337-34-8	Screw, Socket 1/4-20 x 1/2	1
4	54-26083-1	Knife Holder, 3" Extended	1
5	67-26087	Bearing, Special	2
6	54-26084	.035 Limit Mounting Disc	1
	54-26084-1	.075 Limit Mounting Disc	1
7	67-26119	3" (75 mm) Round Knife	1
	67-26119 M2	3" (75 mm) M2 Round Knife	1
8	54-26085	.035 Limit Clamp Disc	1
	54-26085-1	.075 Limit Clamp Disc	1
9	211-36	Stop Nut, 5/16-18	1

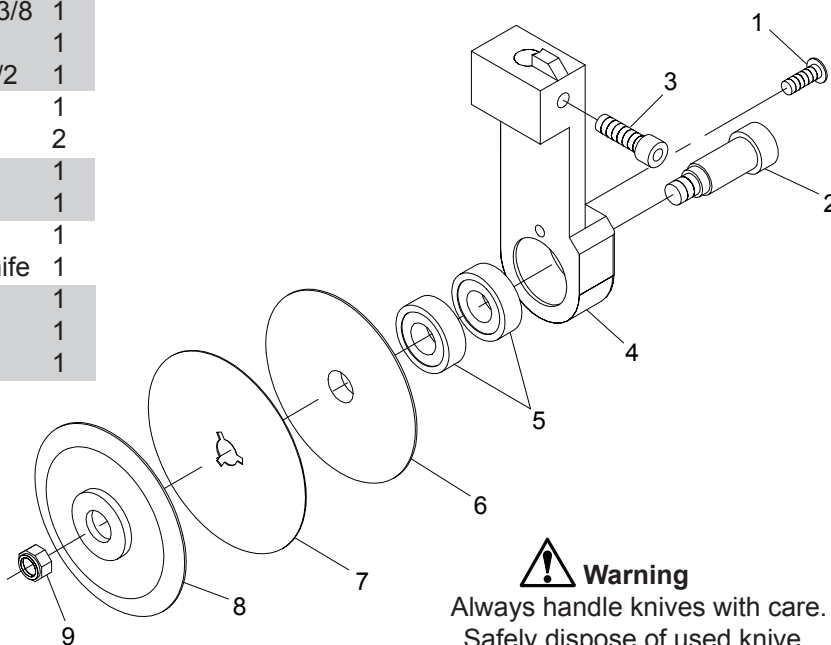
*Adapters not Required



Caution

Improper depth limiters may cause damage to the cutting surface.

Blade Changing Station 68-26141-1 Optional



Tools for Fiber Cutter
Tool Head with
Gantry Lift Kits "Only"



Warning

Always handle knives with care.
Safely dispose of used knife.

Tool Options

3" (75mm) Round Knife Assembly

H9-30074-2

ITEM	PART No.	DESCRIPTION	QTY
1	318-102-6	Screw, Pan Hd, #10-32 x 3/8	1
2	54-26086	Knife Clamp Bolt	1
3	337-34-8	Screw, Socket 1/4-20 X 1/2	1
4	54-26083-2	Knife Mtg, 3" Round Cutter	1
5	67-26087	Bearing, Special	2
6	54-26084	.035 Limit Mounting Disc	1
	54-26084-1	.075 Limit Mounting Disc	1
7	67-26119	3" (75 mm) Round Knife	1
	67-26119 M2	3" (75 mm) M2 Round Knife	1
8	54-26085	.035 Limit Clamp Disc	1
	54-26085-1	.075 Limit Clamp Disc	1
9	211-36	Stop Nut, 5/16-18	1

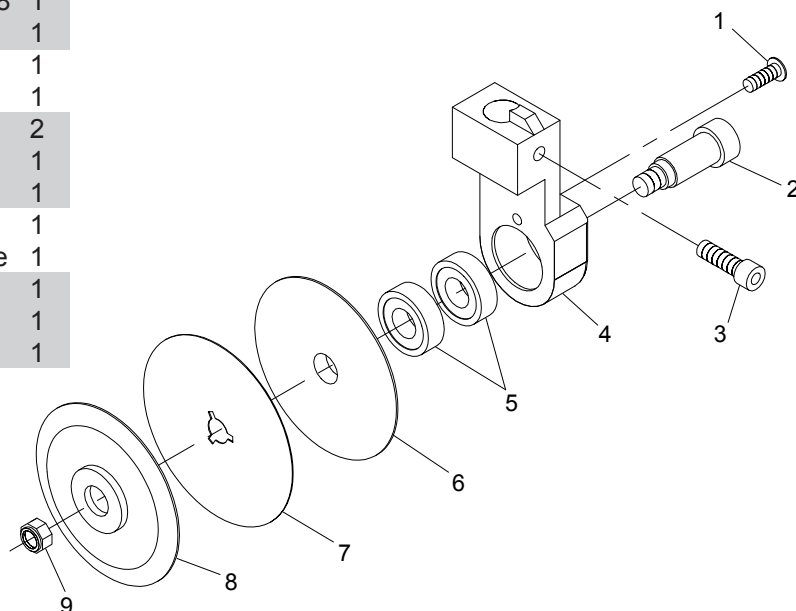
*Adapters not Required



Caution

Improper depth limiters may cause damage to the cutting surface.

Blade Changing Station 68-26141-1 Optional



Tool Options

3" (75mm) Extended Round Knife Assembly

H9-30075-3

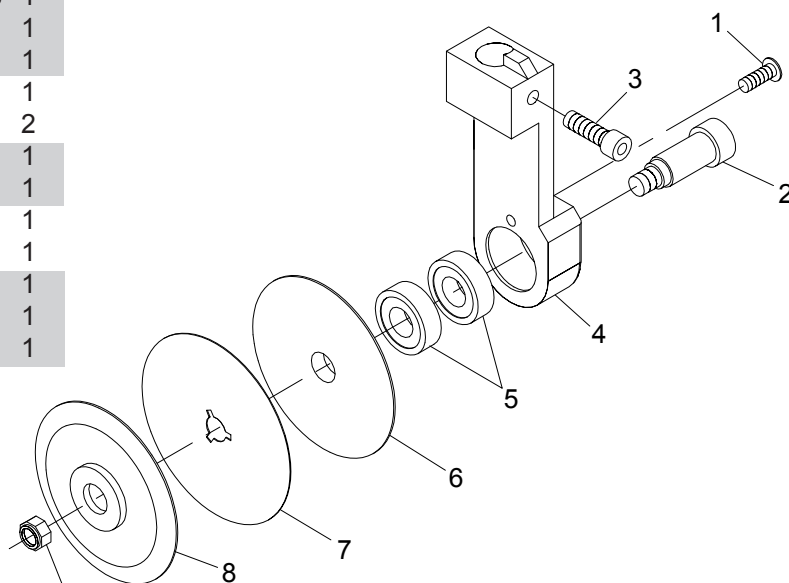
ITEM	PART No.	DESCRIPTION	QTY
1	318-102-6	Screw, Pan Hd, #10-32 x 3/8	1
2	54-26086	Knife Clamp Bolt	1
3	337-34-8	Screw, Socket 1/4-20 x 1/2	1
4	54-26083-3	Knife Mtg, 3" Ext Rnd. Cutter	1
5	67-26087	Bearing, Special	2
6	54-26084	.035 Limit Mounting Disc	1
	54-26084-1	.075 Limit Mounting Disc	1
7	67-26119	3" (75 mm) Round Knife	1
	67-26119 M2	3" (75 mm) M2 Round Knife	1
8	54-26085	.035 Limit Clamp Disc	1
	54-26085-1	.075 Limit Clamp Disc	1
9	211-36	Stop Nut, 5/16-18	1

*Adapters not Required



Caution

Improper depth limiters may cause damage to the cutting surface.



Tool Options

Extended Drag Knife Assembly

H9-30051-1 (.02 Thick x 30 Degree Angle)

H9-30052-1 (.04 Thick x 30 Degree Angle)

H9-30053-1 (.02 Thick x 45 Degree Angle)

H9-30054-1 (.04 Thick x 45 Degree Angle)

H9-30057-1 (.04 Thick x 55 Degree Angle)

H9-30058-1 (.02 Thick x 55 Degree Angle)

ITEM	PART No.	DESCRIPTION	QTY
1	54-26111-1	Drag Knife Holder, Extended	1
2	335-93-6	Screw, Socket Hd. 8-32 x 3/8	2
3	347-93-5	Setscrew, 8-32 x 5/16	1
4	348-94-12	Setscrew, #8-36 x 3/4	1
5	54-26011-1	Drag Knife, .02 thk x 30 deg	1
	54-26011	Drag Knife, .04 thk x 30 deg	1
	54-26011-2	Drag Knife, .02 thk x 45 deg	1
	54-26011-3	Drag Knife, .04 thk x 45 deg	1
	54-26011-5	Drag Knife, .02 thk x 55 deg	1
	54-26011-4	Drag Knife, .04 thk x 55 deg	1
6	54-26112	Drag Knife Foot (std)	1
	54-26112-1	Drag Knife Foot Carpet Style (optional)	1
	54-26112-W	Drag Knife Foot, Wide (optional)	1
	54-26112-5	Drag Knife Foot, UHMW	1
	54-26112-5W	Drag Knife Foot, Wide UHMW	1
7	347-93-5	Setscrew, Brass Tip#8-32 x 5/16	2

* Adapters not Included

Required Adapters for use with each Tool Spindle:
 Standard Tool Head (all types).... 54-26021-1
 Heavy Duty Tool Head..... Not Required
 Fiber Cutter Tool Head 54-26020-3

Blade Changing Station 68-26141 Optional

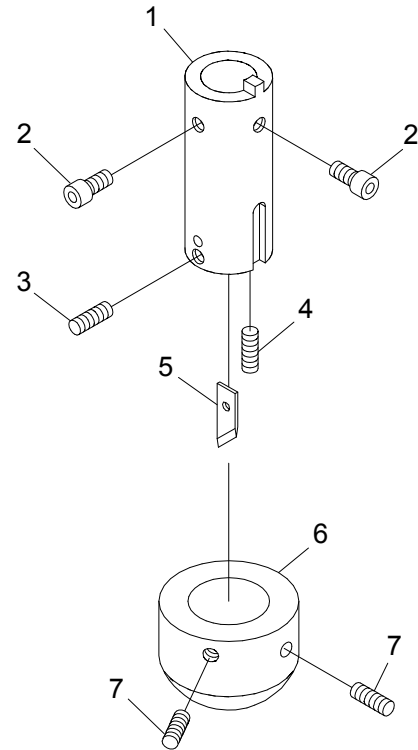
Optional Knife Material & Surface Treatments Available.

To order M2 steel knife material add "M2" after the part number.

To order M2 steel knife material with -Z- Surface Treatment add "M2Z" after the part number.

To order M2 steel knife material with -Y- Surface Treatment add "M2Y" after the part number.

To order VC Carbide knife material add "VC" after the part number.



Warning

Always handle knives with care.
 Safely dispose of used knife.

Optional Blade Styles

ITEM	PART No.	DESCRIPTION	QTY
5	54-26862-3020	Flat Tip, .02 thk x 30 deg	1
	54-26862-3040	Flat Tip, .04 thk x 30 deg	1
	54-26862-4520	Flat Tip, .02 thk x 45 deg	1
	54-26862-4540	Flat Tip, .04 thk x 45 deg	1
	54-26862-5520	Flat Tip, .02 thk x 55 deg	1
	54-26862-5540	Flat Tip, .05 thk x 55 deg	1

54-27298	Drag Knife, .038/30/.68 w/Hole	1
54-27298-1	Drag Knife, .020/30/.68 w/Hole	1
54-27298-2	Drag Knife, .020/45/.68 w/Hole	1
54-27298-3	Drag Knife, .038/45/.68 w/Hole	1
54-27298-4	Drag Knife, .040/55/.79 w/Hole	1
54-27298-5	Drag Knife, .020/55/.79 w/Hole	1

> Ref: thk/angle/length <

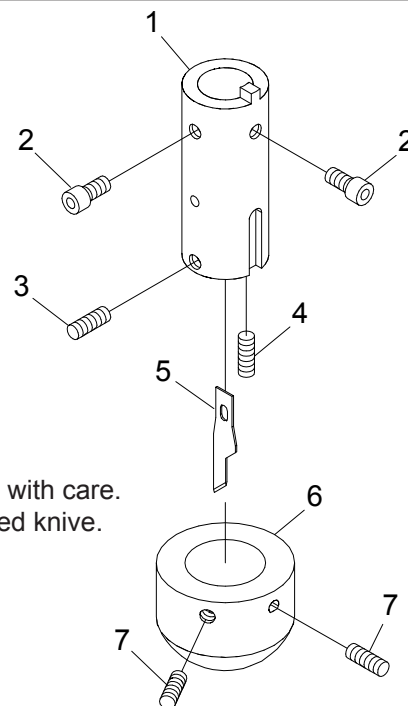
Tool Options

Extended X-Acto Drag Knife Assembly

H9-30064-1 (#16 X-Acto)

ITEM	PART No.	DESCRIPTION	QTY
1	54-26111-3	X-Acto Knife Holder, Extended	1
2	335-93-6	Screw, Socket Hd. 8-32 x 3/8	2
3	347-93-5	Setscrew, Brass Tip #8-32 x 5/16	1
4	348-94-12	Setscrew, Special Oval Point, #8-36 x 3/4	1
5	67-12792	#16 X-Acto Drag Knife	1
6	54-26112	Drag Knife Foot (std)	1
	54-26112-1	Drag Knife Foot Carpet Style (optional)	1
	54-26112-W	Drag Knife Foot, Wide (optional)	1
	54-26112-5	Drag Knife Foot, UHMW	1
	54-26112-5W	Drag Knife Foot, Wide UHMW	1
7	347-93-5	Setscrew, Brass Tip#8-32 x 5/16	2

Warning
Always handle knives with care.
Safely dispose of used knife.



* Adapters not Included

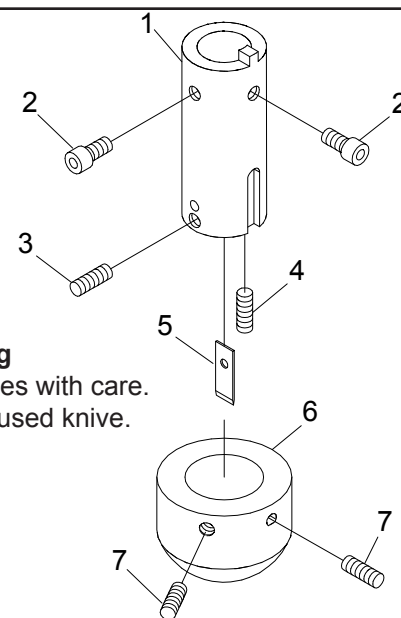
Required Adapters for use with each Tool Spindle:
Standard Tool Head (all types) 54-26021-1
Heavy Duty Tool Head..... Not Required
Fiber Cutter Tool Head 54-26020-3

Extended Slitter Knife Assembly

H9-30055-1 (.04 thk)

ITEM	PART No.	DESCRIPTION	QTY
1	54-26111-1	Drag Knife Holder, Extended	1
2	335-93-6	Screw, Socket Hd. 8-32 x 3/8	2
3	347-93-5	Setscrew, Brass Tip #8-32 x 5/16	1
4	348-94-12	Setscrew, Special Oval Point, #8-36 x 3/4	1
5	54-26012	Slitter Knife, .04 Thick(Square)	1
6	54-26112	Drag Knife Foot (std)	1
	54-26112-1	Drag Knife Foot Carpet Style (optional)	1
	54-26112-W	Drag Knife Foot, Wide (optional)	1
	54-26112-5	Drag Knife Foot, UHMW	1
	54-26112-5W	Drag Knife Foot, Wide UHMW	1
7	347-93-5	Setscrew, Brass Tip#8-32 x 5/16	2

Warning
Always handle knives with care.
Safely dispose of used knife.



* Adapters not Included

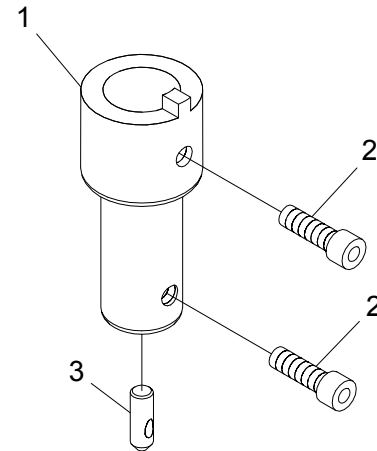
Required Adapters for use with each Tool Spindle:
Standard Tool Head (all types) 54-26021-1
Heavy Duty Tool Head..... Not Required
Fiber Cutter Tool Head 54-26020-3

Tool Options

Hole Punch Assembly

(See chart for assembly number)

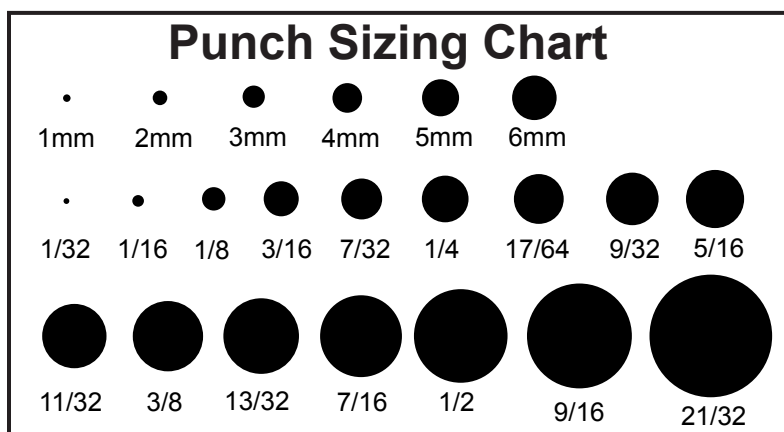
ITEM	PART No.	DESCRIPTION	QTY
1	See Chart	Punch Holder	1
2	335-93-4	Screw, Socket Hd. 8-32 x 1/4	2
3	See Chart	Punch, Hole Cutting	1



Blade Changing Station 68-26141 Optional

Hole Size	Punch no.(3)	Punch Description	Punch Holder(1)	Assembly no.	Opt. Depth Limiter
1mm(.039")	67-26027-8	1mm Cut, 1/8" Punch Base	54-26013-15	H9-30028-1	68-26341-7
2mm(.078")	67-26027-9	2mm Cut, 3/16" Punch Base	54-26013-14	H9-30029-1	68-26341-6
2.5mm(.098")	67-26027-31	2.5mm Cut, 1/4" Punch Base	54-26013-16	H9-30105-1	68-26341-10
3mm(.118")	67-26027-10	3mm Cut, 1/4" Punch Base	54-26013-16	H9-30030-1	68-26341-10
4mm(.157")	67-26027-11	4mm Cut, 5/16" Punch Base	54-26013-10	H9-30031-1	68-26341-2
5mm(.196")	67-26027-12	5mm Cut, 5/16" Punch Base	54-26013-10	H9-30032-1	68-26341-2
6mm(.236")	67-26027-13	6mm Cut, 3/8" Punch Base	54-26013-11	H9-30033-1	68-26341-1
Pin Point	67-26027-23	Point Locator, 1/8" Punch Base	54-26013-15	H9-30089-1	68-26341-7
Pin Point	67-26027-24	Point Locator, 3/16" Punch Base	54-26013-14	H9-30090-1	68-26341-6
1/32"(.032")	67-26027-7	1/32" Cut, 1/8" Punch Base	54-26013-15	H9-30039-1	68-26341-7
3/64"(.047")	67-26027-42	3/64" Cut, 1/8" Punch Base	54-26013-15		68-26341-7
1/16"(.062")	67-26027-6	1/16" Cut, 3/16" Punch Base	54-26013-14	H9-30040-1	68-26341-6
(.090")	67-26027-38	.090" Cut, 3/16" Base	54-26013-1	H9-30116-1	
1/8"(.125")	67-26027-2	1/8" Cut, 5/16" Punch Base	54-26013-10	H9-30034-1	68-26341-2
3/16"(.188")	67-26027-3	3/16" Cut, 5/16" Punch Base	54-26013-10	H9-30035-1	68-26341-2
7/32"(.218")	67-26027-17	7/32" Cut, 3/8" Punch Base	54-26013-11	H9-30082-1	68-26341-1
1/4"(.250")	67-26027-1	1/4" Cut, 3/8" Punch Base	54-26013-11	H9-30037-1	68-26341-1
1/4"(.250")	67-26027-33	1/4" Cross, 1/4" Punch Base	54-26013-16	H9-30110-1	68-26341-10
17/64"(.265")	67-26027-18	17/64" Cut, 7/16" Punch Base	54-26013-12	H9-30083-1	68-26341-5
9/32"(.281")	67-26027-14	9/32" Cut, 7/16" Punch Base	54-26013-12	H9-30042-1	68-26341-5
5/16"(.312")	67-26027-5	5/16" Cut, 7/16" Punch Base	54-26013-12	H9-30036-1	68-26341-5

Optional: To Order Long Taper Punches add "L" after the part number.
To Order Perforating Punches add "P" after the part number.



* **Adapters not Included**

Required Adapters for use with each Tool Spindle:
Standard Tool Head (all types) 54-26021-1
Heavy Duty Tool Head..... Not Required
Fiber Cutter Tool Head 54-26020-3

Tool Options

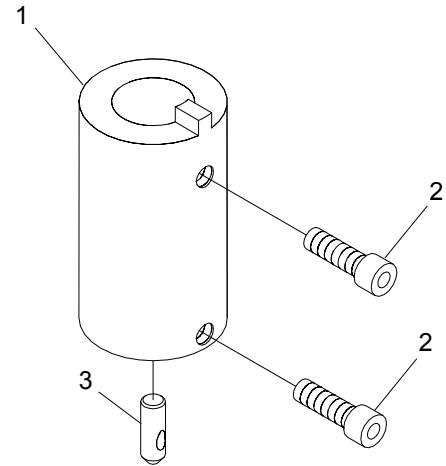
Heavy Duty Hole Punch Assembly

(See chart for assembly number)

ITEM	PART No.	DESCRIPTION	QTY
1	See Chart	Punch Holder	1
2	335-93-4	Screw, Socket Hd. 8-32 x 1/4	2
3	See Chart	Punch, Hole Cutting	1

* Adapters not Included

Required Adapters for use with each Tool Spindle:
 Standard Tool Head (all types) 54-26021-1
 Heavy Duty Tool Head..... Not Required
 Fiber Cutter Tool Head 54-26020-3



Blade Changing Station 68-26141 Optional

Hole Size	Punch no.	Punch Description	Punch Holder	Assembly no.	Opt. Depth Limiter
21/64"(.328")	67-26027-30	21/64" Cut, 1/2" Base	54-26013-13	H9-30104-1	
11/32"(.344")	67-26027-19	11/32" Cut, 1/2" Base	54-26013-13	H9-30084-1	
3/8"(.375")	67-26027-15	3/8" Cut, 1/2" Base	54-26013-13	H9-30041-1	
25/64"(.391")	67-26027-28	25/64" Cut, 1/2" Base	54-26013-13	H9-30098-1	
13/32"(.406")	67-26027-20	13/32" Cut, 9/16" Base	54-26013-18	H9-30085-1	68-26341-16
7/16"(.438")	67-26027-16	7/16" Cut, 9/16" Base	54-26013-18	H9-30043-1	68-26341-16
1/2"(.500")	67-26027-4	1/2" Cut, 5/8" Base	54-26013-17	H9-30038-1	
9/16"(.563")	67-26027-22	9/16" Cut, 11/16" Base	54-26013-20	H9-30087-1	
5/8"(.625")	67-26027-32	5/8" Cut, 3/4" Base	54-26013-19	H9-30106-1	
21/32"(.656")	67-26027-21	21/32" Cut, 3/4" Base	54-26013-19	H9-30086-1	
43/64"(.672)	67-26027-29	43/64" Cut, 3/4" Base	54-26013-19	H9-30103-1	
(.695")	67-26027-26	.695" Cut, 13/16" Base	54-26013-22	H9-30096-1	
45/64"(.703")	67-26027-27	45/64" Cut, 13/16" Base	54-26013-22	H9-30097-1	
7/8"(.875")	67-26027-25	7/8" Cut, 1" Base	54-26013-21	H9-30095-1	
(.530")	67-26027-37	.530" Cut, 5/8" Base	54-26013-17	H9-30115-1	
(.740")	67-26027-34	.740" Cut, 1" Base (40°)	54-26013-25	H9-30112-1	
(.812")	67-26027-39	.812" Cut, 1" Base (40°)	54-26013-25	H9-30117-1	
(.850")	67-26027-35	.850" Cut, 1" Base (40°)	54-26013-25	H9-30113-1	
(.865")	67-26027-36	.865" Cut, 1" Base (40°)	54-26013-25	H9-30114-1	
(1")	67-26027-41L	1" Cut, 1 1/8" Base (40°)	54-26013-26	H9-30120-1L	
7/16"(.438")	67-26027-16CC	.438" Cut, 9/16" Base, Long Taper Center Relief	54-26013-18	H9-30118-1	
1/2"(.500")	67-26027-4CC	.500" Cut, 5/8" Base, Long Taper Center Relief	54-26013-17	H9-30119-1	

Tool Options

Corner Punch Assembly

.50" Radius Assembly

H9-30081-1

ITEM	PART No.	DESCRIPTION	QTY
1	355-34-16	Shoulder Screw	1
2	54-26473	Tool Holder Corner Punch	1
3	335-93-6	Screw, Socket Hd 8-32 x 3/8	2
4	54-26474	Clamp, Corner Punch	1
5	511-3-3	Roll Pin, .093 x 1/8 dia	1
6	54-26476	Blade, Curved .5 Radius x .018 Thick	1
7	67-26341	Spring	1
8	54-26475	Plunger, Corner Punch	1

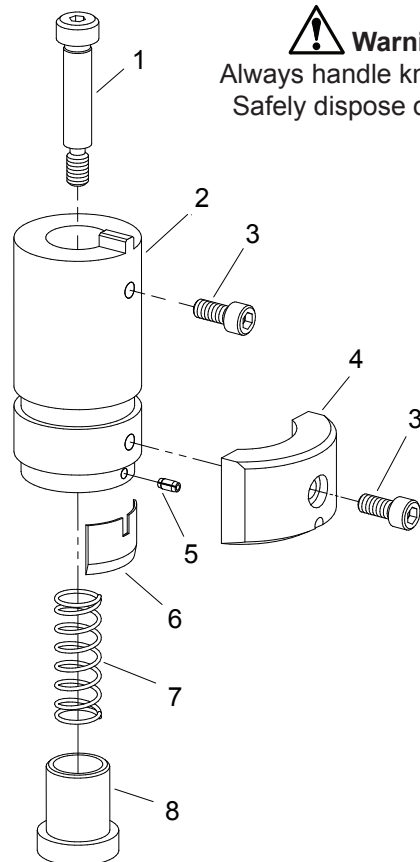
* Adapters not Included

Required Adapters for use with each Tool Spindle:
 Standard Tool Head (all types) 54-26021-1
 Heavy Duty Tool Head..... Not Required
 Fiber Cutter Tool Head 54-26020-3



Caution

Improper depth limiters may cause damage to the cutting surface.



Warning

Always handle knives with care.
 Safely dispose of used knife.

Blade Changing Station 68-26141 Optional

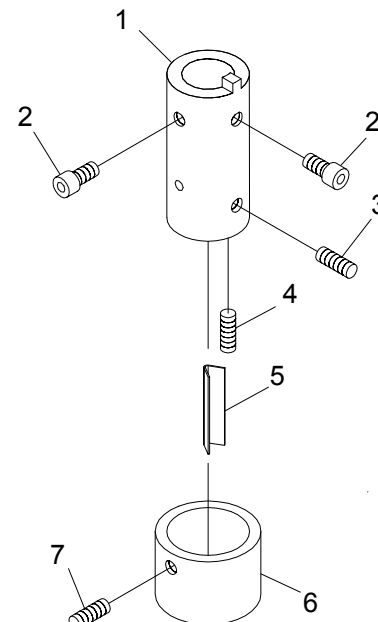
"V" Notch Punch Assembly

H9-30056-1

ITEM	PART No.	DESCRIPTION	QTY
1	54-26113-1	"V" Notch Holder, Extended	1
2	335-93-6	Screw, Socket Hd. 8-32 x 3/8	2
3	342-93-4	Setscrew, #8-32 x 1/4	1
4	348-94-12	Setscrew, Special Oval Point, #8-36 x 3/4	1
5	54-H2015	"V" Notch Punch, 60° v, (.237 long)	1
	54-H2015-1	"V" Notch Punch, 60° v, (.175 long)	1
	54-H2015-2	"V" Notch Punch, 60° v, (.112 long)	1
6	54-26114	"V" Notch Foot	1
7	342-93-3	Setscrew, Special Oval Point, #8-32 x 3/16	1

* Adapters not Included

Required Adapters for use with each Tool Spindle:
 Standard Tool Head (all types) 54-26021-1
 Heavy Duty Tool Head..... Not Required
 Fiber Cutter Tool Head 54-26020-3



Blade Changing Station 68-26141 Optional

Tool Options

Adjustable Carpet Cutter Assembly

.04 x 30° Assembly

H9-30052-1C

ITEM	PART No.	DESCRIPTION	QTY
1	335-93-4	Screw, Socket Hd. #8-32 x 1/4	2
2	54-26111-1C	Tool Holder, Extended, Carpet Cutter	1
3	342-93-4S	Setscrew, #8-32 x 1/4	1
4	355-34-16SA	Shoulder Screw, Special	3
5	54-26011-7	Flat Drag Knife, .04 x 30°	1
	54-26011-13	Flat Drag Knife, .04 x 50°	1
6	54-26527	Press Foot Insert	1
7	335-93-6	Screw, Socket Hd. #8-32 x 3/8	1
8	54-26528	Adjustable Knurled Stop	1
9	345-93-3S	Setscrew, #8-32 x 1/4	2
10	67-26371	Spring, Compression	3
11	54-26529	Press Foot Release	1
12	91-26030	Vernier Decal	2

* Adapters not Included

Optional Knife Material & Surface Treatments Available.

To order M2 steel knife material add "M2" after the part number.

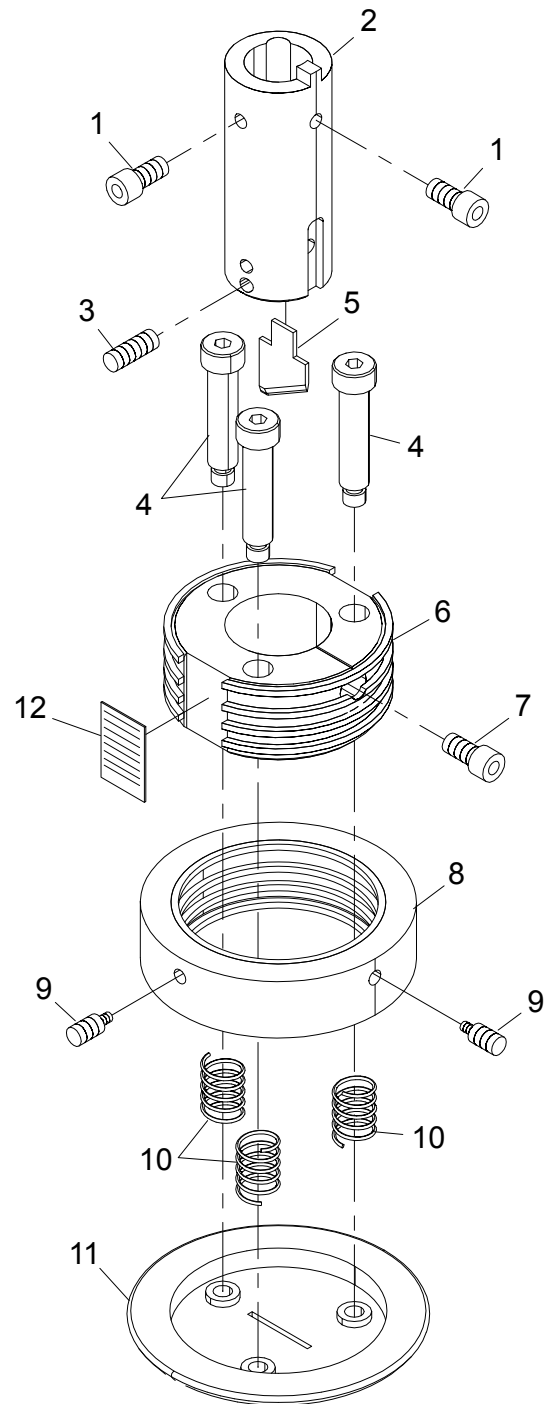
To order M2 steel knife material with -Z- Surface Treatment add "M2Z" after the part number.

Required Adapters for use with each Tool Spindle:
Standard Tool Head (all types).... 54-26021-1
Heavy Duty Tool Head..... Not Required
Fiber Cutter Tool Head 54-26020-3



Caution

Improper depth limiters may cause damage to the cutting surface.



Warning

Always handle knives with care.
Safely dispose of used knife.

Tool Options

80° V-Knife Cutter Assembly 68-26112

ITEM	PART No.	DESCRIPTION	QTY
1	54-26549	Tool Holder, V-Cutter	1
2	342-93-6	Setscrew, Hex #8-32 x 3/8	2
3	54-26548	Adjust Shaft, V-Cutter	2
4	54-26547	Slide Shoe, V-Cutter	1
5	335-93-8	Screw, Socket Hd. #8-32 x 1/2	2
6	335-86-6	Screw, Socket Hd. #6-32 x 3/8	4
7	54-26546	80° V-Knife	1
8	335-93-6	Screw, Socket Hd. #8-32 x 3/8	2

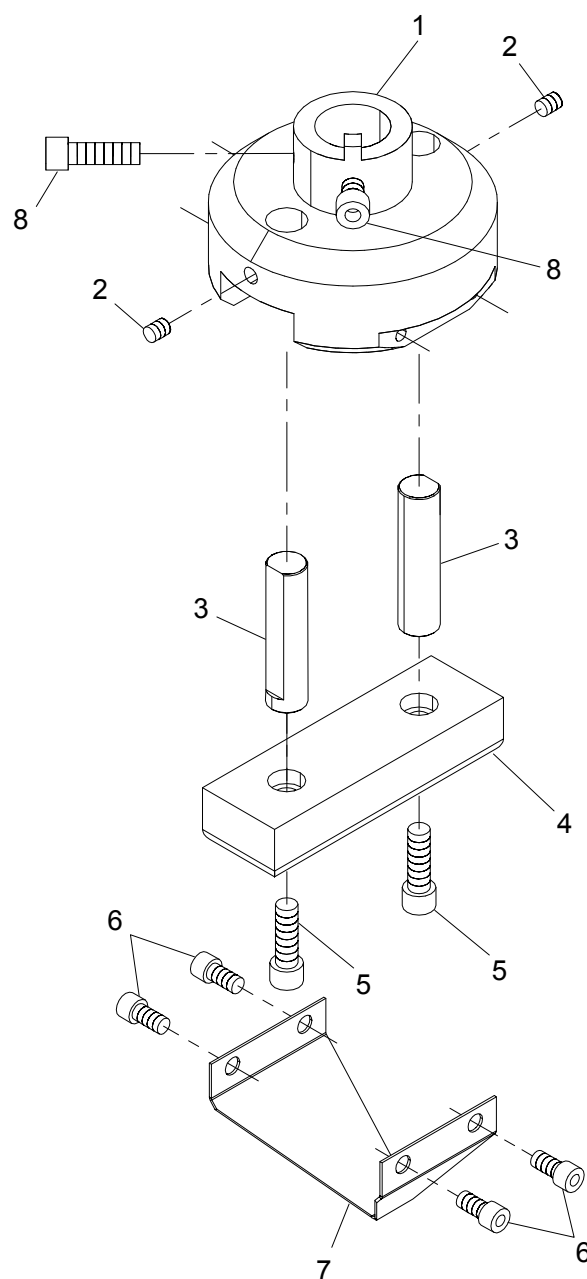
* Adapters not Included

Required Adapters for use with each Tool Spindle:
Standard Tool Head (all types) 54-26021-1
Heavy Duty Tool Head..... Not Required
Fiber Cutter Tool Head 54-26020-3



Caution

Improper depth limiters may cause damage to the cutting surface.



Warning

Always handle knives with care.
Safely dispose of used knife.

Blade Changing Station 68-26141 Optional

Tool Options

1" Tall Drag Knife Assembly

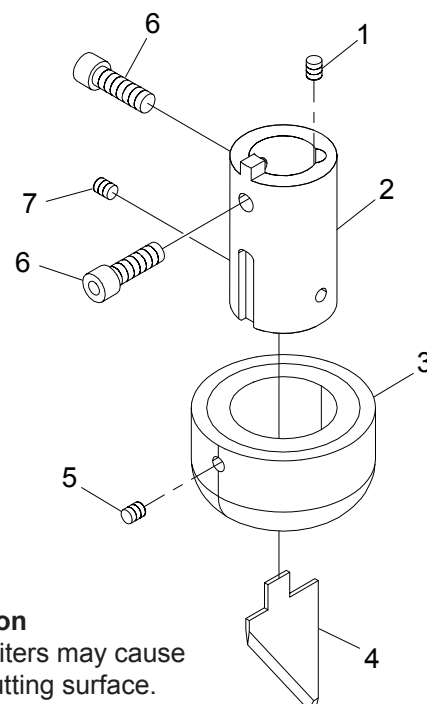
.04 x 55° Assembly

H9-30088-1, H9-30088-1W, H9-30088-1WL

H9-30088-2W, H9-30088-3W

ITEM	PART No.	DESCRIPTION	QTY
1	348-94-12	Setscrew, Hex #8-32 x 3/4	1
2	54-26111-1	Drag Knife Holder Ext.	1
	54-26111-4	Tool Holder, 1" Tall Drag Knife	1
3	54-26112-3	1" Drag Foot	1
	54-26112-3W	1" Drag Foot, Wide Base 3"	1
	54-26112-3WL	1" Drag Foot, Wide Base, 3"	1
		Long Slot	1
4	54-26011-6	.040 TK X 40°, Drag Knife	1
	54-26011-9	Drag Knife, 1" tall, flat tip	1
	54-26011-17	Drag Knife, 2-1/8" tall, flat tip	1
	54-26011-18 M2	Drag Knife, 50°, M2 Long	1
	54-26011-19 M2	Drag Knife, 50°, M2 XL	1
5	347-93-5	Setscrew, Hex #8-32 x 5/16	1
6	335-93-6	Screw, Socket Hd. #8-32 x 3/8	2
7	347-93-5	Setscrew, Hex #8-32 x 5/16	1

* Adapters not Included



Caution
Improper depth limiters may cause damage to the cutting surface.

Required Adapters for use with each Tool Spindle:
Standard Tool Head (all types).... 54-26021-1
Heavy Duty Tool Head..... Not Required
Fiber Cutter Tool Head 54-26020-3

Tool Options

Drill Tool Assembly

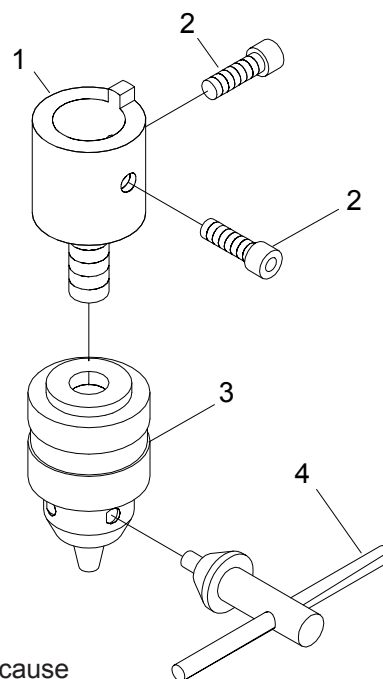
1/64 - 5/32 Drill Dia.

H9-30091-1

ITEM	PART No.	DESCRIPTION	QTY
1	54-26791	Drill Chuck Holder	1
2	335-93-6	Screw, Socket Hd. #8-32 x 3/8	2
3	229C1-5	Drill Chuck, (1/64 - 5/32)	1
4	142C1-21	Key, Drill Chuck	1

* Adapters not Included

Required Adapters for use with each Tool Spindle:
Standard Tool Head (all types).... 54-26021-1
Heavy Duty Tool Head..... Not Required
Fiber Cutter Tool Head 54-26020-3



Caution
Improper depth limiters may cause

Blade Changing Station 68-26141 Optional

Tool Options

Fly Cutter Assembly

2-1/2" Wide Path

H9-30100-1

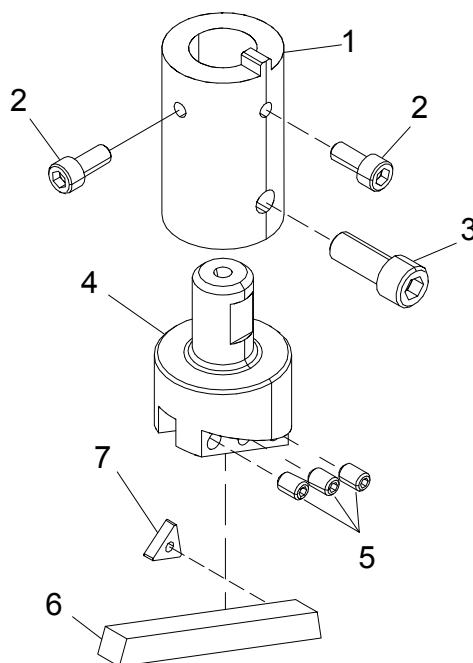


Caution

Improper depth limiters may cause damage to the cutting surface.

ITEM	PART No.	DESCRIPTION	QTY
1	54-26013-23	Fly Cut Holder	11
2	335-93-6	Screw, Socket Hd. #8-32 x 3/8	2
3	335-35-10	Screw, Socket Hd. 1/4-28 x 5/8	1
4	54-27184	Fly Cut Tool Holder	1
5	342-86-4	Setscrew, Hex #6-32 x 1/4	3
6	54-27185	Tool Mount, Fly Cutter	2
7	67-26582	Tri-Edge Blade	1

* Adapters not Included



Required Adapters for use with each Tool Spindle:
 Standard Tool Head (all types)..... 54-26021-1
 Heavy Duty Tool Head..... Not Required
 Fiber Cutter Tool Head 54-26020-3

Blade Changing Station 68-26141 Optional

Tool Options

Depth Limiting Drill Tool Assembly

1/16 Drill Dia. x 3/4 Deep

H9-30102-1

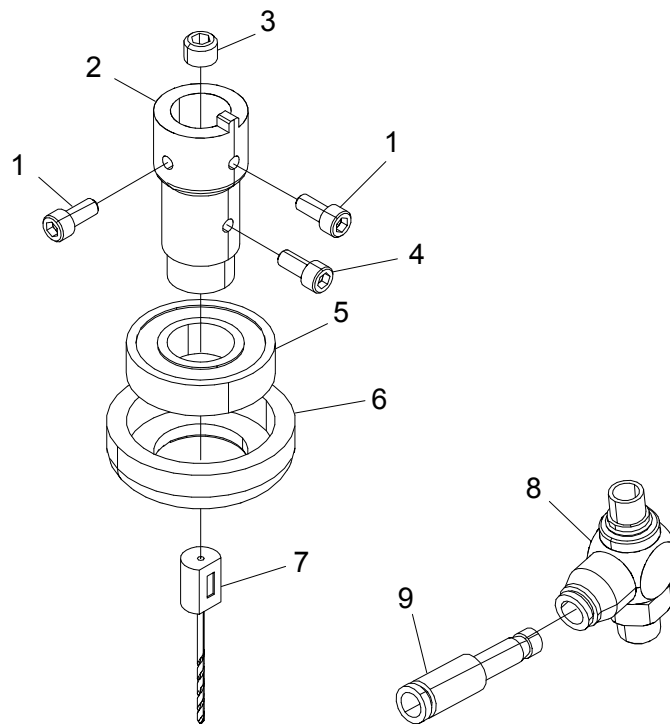


Caution

Improper depth limiters may cause damage to the cutting surface.

ITEM	PART No.	DESCRIPTION	QTY
1	54-26791	Drill Chuck Holder	1
2	335-93-6	Screw, Socket Hd. #8-32 x 3/8	2
3	342-36-4	Setscrew, Hex 5/16-32 x 1/4	1
4	335-93-6	Screw, Socket Hd. #8-32 x 3/8	1
5	9020-0202	Rotate Bearing	1
6	54-27548	Depth Limit Foot	1
7	54-27549-1	Drill Bit, 1/16 Dia.	1
8	100-18-37	Speed Control Valve	1
9	100-12-1	Reducer, 5/32 to 1/4	1

* Adapters not Included



Required Adapters for use with each Tool Spindle:

Standard Tool Head (all types).... 54-26021-1
Heavy Duty Tool Head..... Not Required
Fiber Cutter Tool Head 54-26020-3

Blade Changing Station 68-26141 Optional

Tool Options

Depth Limiting Drill Tool Assembly, *End Mill Style*

H9-30102-2, 1/8 Drill Dia. x 1/8 Deep

H9-30102-3, 1/4 Drill Dia. x 1/8 Deep

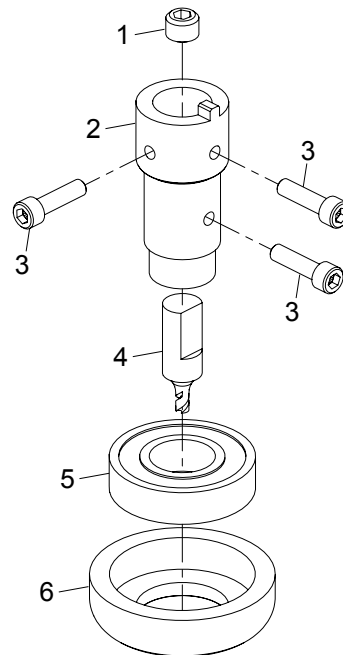
H9-30102-4, 3/8 Drill Dia. x 1/8 Deep

ITEM	PART No.	DESCRIPTION	QTY
1	342-36-4	Setscrew, Hex 5/16-32 x 1/4	1
2	335-93-6	Screw, Socket Hd. #8-32 x 3/8	3
3	54-26791	Drill Chuck Holder	1
4	54-27549-2	End Mill, 1/8 Dia. X 3/8 Dia.	1
	54-27549-3	End Mill, 1/4 Dia. X 3/8 Dia.	1
	54-27549-4	End Mill, 3/8 Dia. X 3/8 Dia.	1
5	9020-0202	Rotate Bearing	1
6	54-27548	Depth Limit Foot	1
7	54-27549-1	Drill Bit, 1/16 Dia.	1
(8)	100-18-37	Speed Control Valve	1
(9)	100-12-1	Reducer, 5/32 to 1/4	1
() -Not Shown			



Caution

Improper depth limiters may cause damage to the cutting surface.



* Adapters not Included

Required Adapters for use with each Tool Spindle:

Standard Tool Head (all types)..... 54-26021-1

Heavy Duty Tool Head..... Not Required

Fiber Cutter Tool Head 54-26020-3

Tool Options

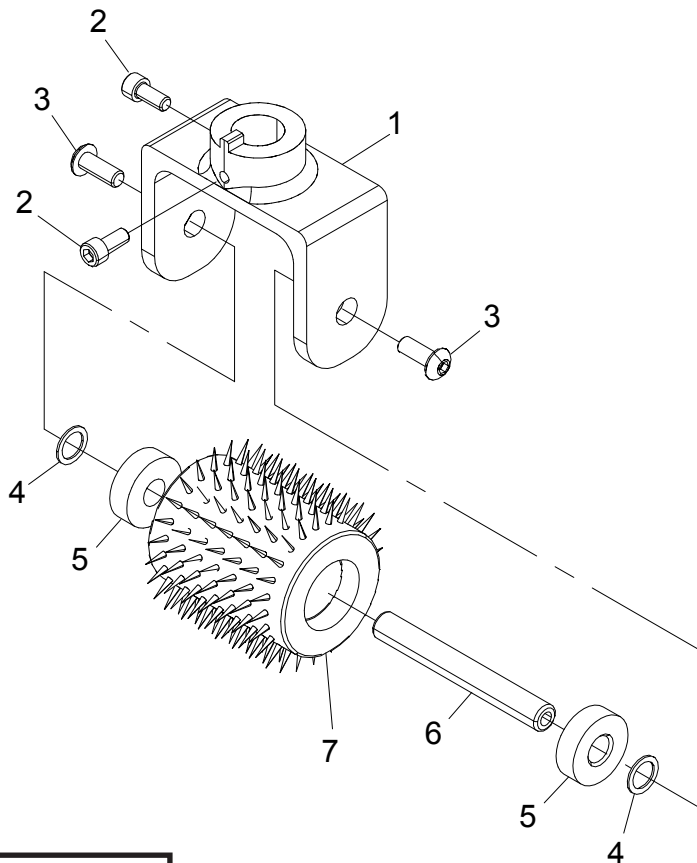
Pin Perforating Assembly 2" Wide x 1/4" Sq. Pattern H9-30101-1



Caution
Improper depth limiters may cause damage to the cutting surface.

ITEM	PART No.	DESCRIPTION	QTY
1	54-27235	Tool Holder, Pin Perf	1
2	335-93-6	Screw, Socket Hd. #8-32 x 3/8	2
3	333-102-8	Screw, Button Hd. #10-32 x 1/2	2
4	CH-83	Washer, Thin	2
5	--	Bearing	2
6	54-27252	Axial	1
7	54-27236	Pin Perf Tool, 2" x 1/4"sq	1

* Adapters not Included



Required Adapters for use with each Tool Spindle:
Standard Tool Head (all types).... 54-26021-1
Heavy Duty Tool Head..... Not Required
Fiber Cutter Tool Head 54-26020-3

Blade Changing Station 68-26141 Optional

Tool Options

Chalk Marking Tool

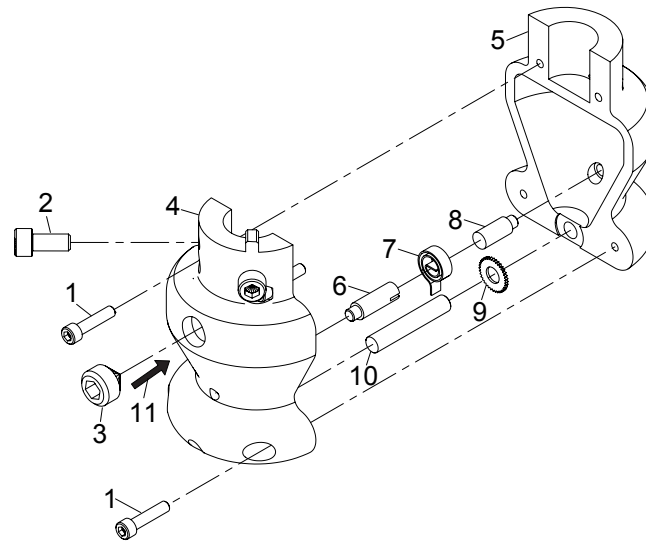
H9-30122-1



Caution

Improper depth limiters may cause damage to the cutting surface.

ITEM	PART No.	DESCRIPTION	QTY
1	335-81-8	Screw, Skt. Hd. #4-40 X 1/2	4
2	335-93-6	Screw, Skt. Hd. #8-32 X 3/8	2
3	342-38-6	Screw, Skt. Set 3/8-16 X 3/8"	1
4	54-28780	Chalk Tool Holder-1	1
5	54-28781	Chalk Tool Holder-2	1
6	54-28847	Spring Holder Shaft	1
7	54-28846	Chalk Tool Coil Spring	1
8	54-28848	Spring Retainer Shaft	1
9	54-28783	Chalk Tool Disc	1
10	54-28840	Lower Pin, Chalk Tool	1
11	67-27235-1	Chalk Tool Refill, Violet	1
	67-27235-2	Chalk Tool Refill, Blue	1
	67-27235-3	Chalk Tool Refill, White	1



* Adapters not Included

Required Adapters for use with each Tool Spindle:
 Standard Tool Head (all types) 54-26021-1
 Heavy Duty Tool Head..... Not Required
 Fiber Cutter Tool Head 54-26020-3

Blade Changing Station 68-26141 Optional

TOOL OPERATING INSTRUCTIONS

- Set Tool Offset To 45°
- Check Alignment Before Operating
- Set Tool Boost Up Time To 100 Milliseconds
- Set Tool Boost Down Time To 0 Milliseconds
- Set Tool Pressure To 5 Psi

Tool Options

45° Angle Plunge Assembly

5/16" Max. Material

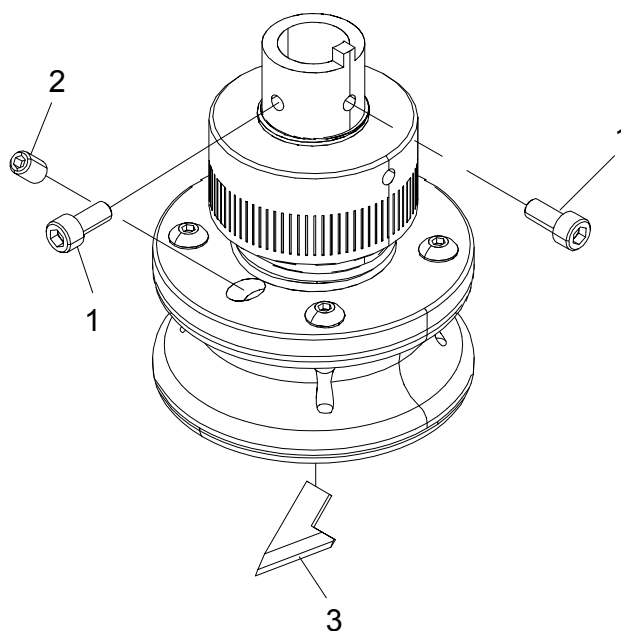
H9-30099-1



Caution

Improper depth limiters may cause damage to the cutting surface.

ITEM	PART No.	DESCRIPTION	QTY
1	335-93-6	Screw, Socket Hd. #8-32 x 3/8	2
2	342-102-5	Setscrew, Hex #10-32 x 5/16	1
3	54-26011-11	Drag Knife, .040 thk x 45°	1
	54-26011-12	Drag Knife, .040 thk x 45°SB(std)	1
	54-26011-14	Drag Knife, .020 thk x 45°SB	1



* Adapters not Included

Required Adapters for use with each Tool Spindle:

Standard Tool Head (all types).... 54-26021-1
Heavy Duty Tool Head..... Not Required
Fiber Cutter Tool Head 54-26020-3

Tool Options

Creasing Drag Assembly

1/4" (.250") Wide - H9-30109-1

(.040") Wide - H9-30108-1

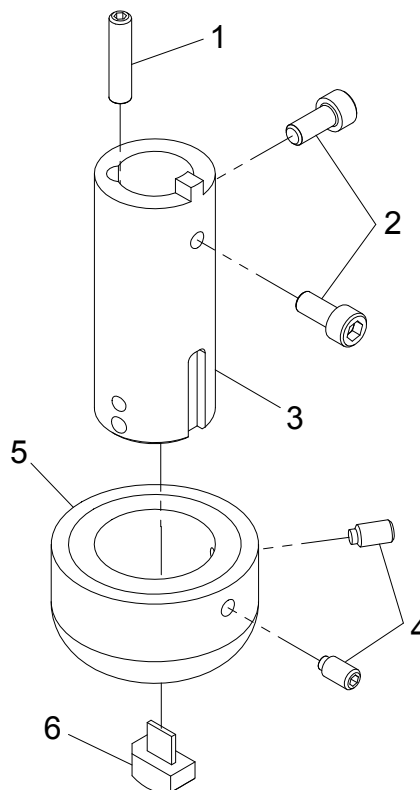
ITEM	PART No.	DESCRIPTION	QTY
1	348-94-12	Oval Nylok #8-36 SS x 3/4"	1
2	335-93-6	Scr. Socket Hd. #8-32 x 3/8"	2
3	54-26111-1	Drag Knife Holder Extension	1
4	347-93-5	Brass Tip SS #8-36 x 3/4"	2
5	54-26112-4	Foot, .25 Wide Creasing Tool Hd.	1
	54-26112-3	Foot, .04 Wide Creasing Tool Hd.	1
6	54-26011-16	.25 Wide Creasing Blade	1
	54-26011-15	.04 Wide Creasing Blade	1

* Adapters not Included



Caution

Improper depth limiters may cause damage to the cutting surface.



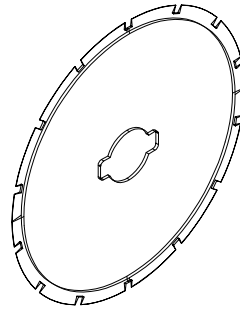
Required Adapters for use with each Tool Spindle:

Standard Tool Head (all types) 54-26021-1
Heavy Duty Tool Head..... Not Required
Fiber Cutter Tool Head 54-26020-3

Blade Changing Station 68-26141 Optional

Perforating Round Blades

Consult Factory for Availability



1" (28mm)
2" (45mm)
2.36" (60mm)
3" (75mm)

ITEM	PART No.	DESCRIPTION	QTY
1	67-26583-4-03	28mm(1.0") Perf. Blade 4/in,.03	1
	67-26584-4-03	45mm(2.0") Perf. Blade 4/in,.03	1

> Ref: 4 Cuts per Inch, .03" No Cut <

Tool Options

Wire Brush Buffing Assembly

H9-30092-1

ITEM	PART No.	DESCRIPTION	QTY
1	54-26013-7	Buff Holder, 1/4" Base	1
2	335-93-6	Screw, Socket Hd. 8-32 x 3/8	2
3	67-26512-1	Buffing Tool, 1/2" Path, .014 Wire	1
	67-26512-2	Buffing Tool, 3/4" Path, .014 Wire	1
	67-26512-3	Buffing Tool, 1" Path, .014 Wire (std)	1

* Adapters not Included

