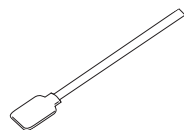


Follow the instructions below to perform short- and long-term maintenance of an Epson® SureColor S-Series printer. For more information, see your *User's Guide*, view instructional videos at www.proimaging.epson.com, or visit epson.com/support.

Supplies

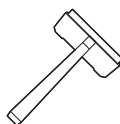
Your S-Series maintenance kit includes:



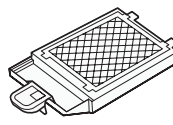
Large cleaning sticks
(x25)



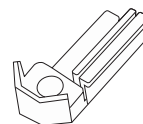
Gloves
(x2)



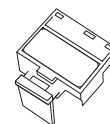
T-wiper



Flushing pads
(x2)

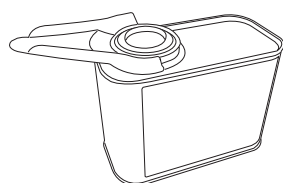


Wipers
(x2)

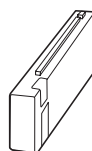


Wiper cleaners
(x2)

It is also recommended you have:



Ink cleaner kit (part #T699300)



Cleaning cartridge (part #T699000)



Lint-free cloths
(not supplied by Epson; check with
your dealer for the correct cloth)

Routine Maintenance

Maintenance is performed on the schedule below or if ink drops, head strikes, or other print quality issues arise.

Standard User: Every 4 days

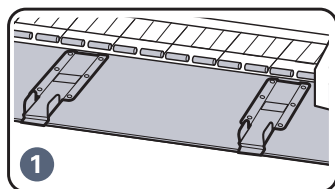
Time: Approximately 10-15 minutes

Medium User: Every 2 days

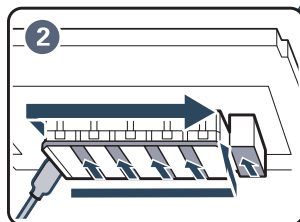
Supplies Required: Large cleaning sticks, ink cleaner kit, T-wiper, wiper cleaner, lint-free cloths.

Heavy User: Once a day

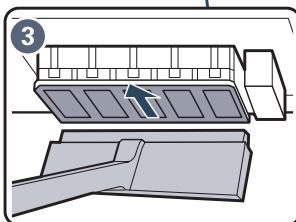
Process: With large cleaning stick soaked in ink cleaning fluid, follow the guide below.



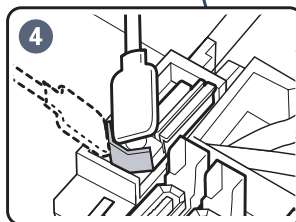
1
Clean platen and media
edge guides.



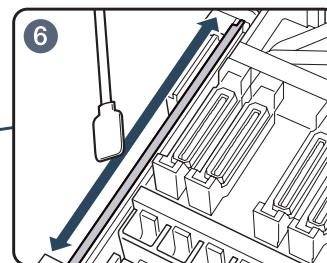
2
Clean print head(s) and
surrounding areas. Be careful
not to touch ink channels as
you clean from back to front.



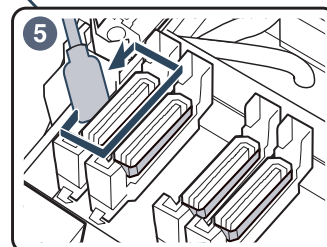
3
Clean print head surface(s).
Starting from the inside, move
the T-wiper towards you.
To prevent damage to the
print head, do not move the
T-wiper back and forth.



4
Clean wiper(s). Remove
wiper(s) and clean
attachment area(s).



6
Clean wiper rail(s).



5
Clean capping stations and
remove any debris from
around the caps.

Maintenance is performed on the schedule below or if ink drops, head strikes, or unrecoverable print quality issues arise.

Standard User: Every 5-6 months

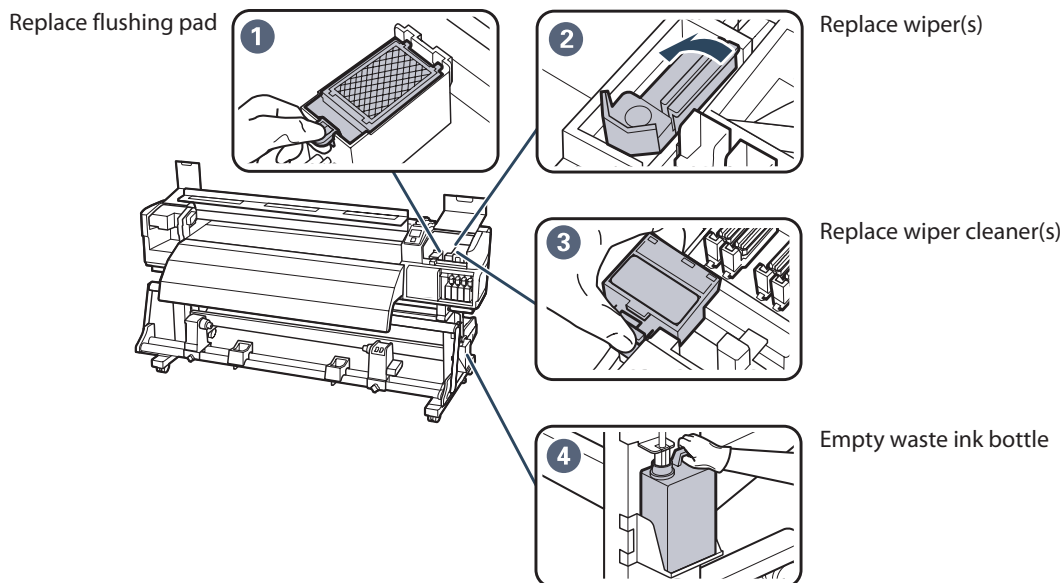
Time: Approximately 10-15 minutes

Medium User: Every 3-4 months

Supplies Required: Flushing pads, wiper cleaner, wipers.

Heavy User: Every 1-2 months

Process: Replace parts and empty the waste ink bottle (as required).



Head washing should only be performed if a standard head cleaning (progressive up to heavy cleaning) and head maintenance did not solve unrecoverable nozzles or degraded print quality due to deflected or missing nozzles.

Head washing is performed on one or more channels. Performing head washing will completely drain the ink from the selected channels, fill the channels with cleaning solution, and then reinitialize the ink channel.

Time: approximately 40 minutes

Supplies Required: Cleaning cartridges, one per channel that needs cleaning. Note that cleaning cartridges can be used at least 2 times, depending on previous use.

Process: With the printer powered on, select **Head Washing** from the Maintenance menu, and follow the instructions on the printer's control panel.