

Explanation about ink

Nov.10th.2008

Mimaki USA Tech center: Tomo Harada

1. Introduction

This procedure explains ink type and how to exchange ink type for JV5, JV33, CJV30, TPC, TS5, TS3.

2. Available inks for each machines

	Water Base Ink			Solvent Base Ink					
	Pigment	Pigment	Sb51	HS	Eco-HS1	SS21	SS21-W	SS21-W-2*8	ES3
	SPC-0180*1	SPC-0494*1	SPC-0493	SPC-0473	SPC-0538	SPC-0501	SPC-0504W	SPC-0504W-2	SPC-0440
Color setting		4/6	4/6	4/6	4/6/7*5	4/6/6+Wx2			4/6
JV5-130S/160S	×	○*2	○	○*4	○*6	×	×	×	○
JV5-320S	×	×	○	○*4	○*6	×	×	×	○
JV33-130/160	×	○	○	×	×	○	○*7	○*9	○
CJV30 series	×	×	×	×	×	○	×	○	○
TPC-600	×	×	×*3	×	×	○	×	○	×
TPC-1000	×	×	○	×	×	○	×	○	×
TS5-1600AMF	×	×	○	×	×	×	×	×	×
TS3-1600AMF	×	×	○	×	×	×	×	×	×

*1. Same ink is in cartridge, SPC-0180 doesn't have IC chip (for only JV3, JV4, Etc.).

*2. Available in FW Ver.1.40 or later.

*3. According to the contract with Sb51 ink manufacture, it cannot be used with narrow printer.

*4. Upgrade FW Ver. to 4.00 or later when HS-K-2 (SPC-0473K-2) is used.

Keep FW Ver. at 3.00 or older if customer still uses HS-K (SPC-0473K).

*5. Eco-HS1 has also Light Black color for 7 color setting.

*6. Upgrade FW Ver. to 4.00 or later when Eco-HS1 is used.

*7. Available in FW Ver.1.30 or later.

*8. SS21-W-2 is better than SS21-W for settle issue.

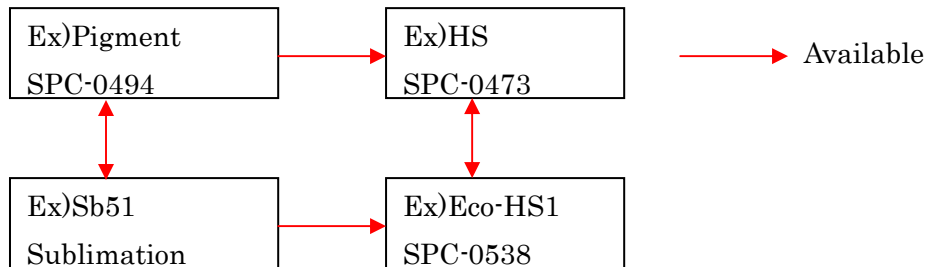
*9. Washing ink line sequence will come automatically at first switching from SS21-W to SS21-W-2.

3. How to exchange the ink type.

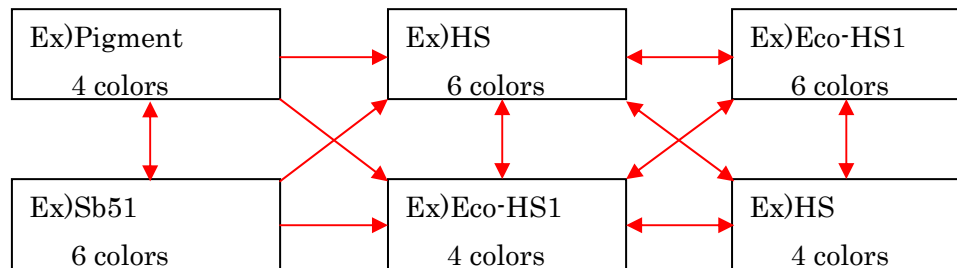
1) Outline

A. Mimaki products cannot be exchanged the ink type from solvent base to water base.

Only **water base to water base**, **Water base to solvent base**, **Solvent base to solvent base** are available.



B. Customers cannot exchange ink type & color setting, only technicians can do.



2) Necessary items

A. **SPC-0188S** : Cleaning liquid cartridge for water base

For exchanging from water base to water base, from water base to solvent base.

JV5 series : 16 pcs

JV33 series, CJV series, TPC : 8 pcs

B. **SPC-0294 or SPC-0475** : Cleaning liquid cartridge for solvent base

***SPC-0474 is included in each productions. Not available to be sold.**

For exchanging from water base to solvent base, from solvent base to solvent base.

JV5 series : 16 pcs

JV33 series, CJV series, TPC : 8 pcs

C. **M700782** : Rubber cap to change ink line for JV33 series, CJV series, TPC

(Included in accessory kit for each products)

For exchanging from 4 colors setting to 6 colors/6 colors+White*2 setting.

JV33 series, CJV series, TPC : 8 pcs

D. **Ink slots color stickers** : Included in accessory kit for each products.

M905644 : Ink slots collector sticker for JV5 all color setting.

It needs to be used in case of JV5 Eco-HS1 7 color setting.

3) Ink cartridge slot arrangement

	JV5 series, TS5-1600AMF																JV33, CJV30, TPC series							
4 color	M	M	C	C	Y	Y	K	K	K	K	Y	Y	C	C	M	M	M	M	C	C	Y	Y	K	K
4 color (Sb51)	M	M	Bl	Bl	Y	Y	K	K	K	K	Y	Y	Bl	Bl	M	M	M	M	C	C	Y	Y	K	K
6 color	M	M	C	C	e	e	K	K	Y	Y	C	C	M	M	m	m	M	m	C	M	e	C	K	Y
6 color (Sb51)	M	M	Bl	Bl	b	b	K	K	Y	Y	Bl	Bl	M	M	m	m	M	m	C	M	e	C	K	Y
7 color	M	M	C	C	Y	Y	K	K	k	k	k	k	e	e	m	m	For only Eco-HS1 ink							
6 color+White	For only SS21 ink																M	W	C	W	Y	m	K	e

M: Magenta **C: Cyan** **Y: Yellow** **K: Black** **m: Light Magenta** **c: Light Cyan** **K: Light Black** **W: White**
Bl: Blue **b: Light Blue**

4) Exchanging flow

- A. [#ADJUST]-[HEAD WASH] and then hit [ENTER] key.

Do washing with automatic sequence...

1. Discharge ink – 2. Fill cleaning cartridges – 3. Discharge cleaning liquid – 2. – 3.

- B. Open head cover and watch ink tubes and dumpers.

When display says [END < > CONTINUE]

Hit [<] key when washed enough.

[>] key when not enough, it does washing sequence again.

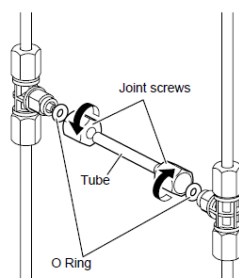
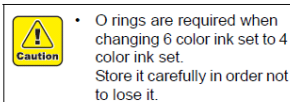
- C. Display says [Maint. WashLiquid END < > DISCHARGE]

Hit [>] when ink type is exchanges from water base to solvent base.

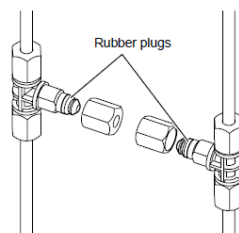
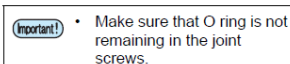
- D. Hit [END] some times when display says [HEAD WASH].

In case of JV33/CJV30/TPC 4 color \leftrightarrow 6 color exchanging, make sure tube connection back side of cartridge slot. (Below is instruction for exchanging 4 color \rightarrow 6 color.)

Loosen the joint screws and remove the tube and O rings.

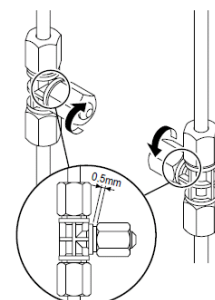


Put on the rubber plugs on the joints.



Tighten the screws of the joint.

Leave the space of around 0.5 mm between the joint and the screw.



E. Choose ink spec when display says [INK SPECIFICATION].

[AQUEOUS INK] or [SOLVENT INK]

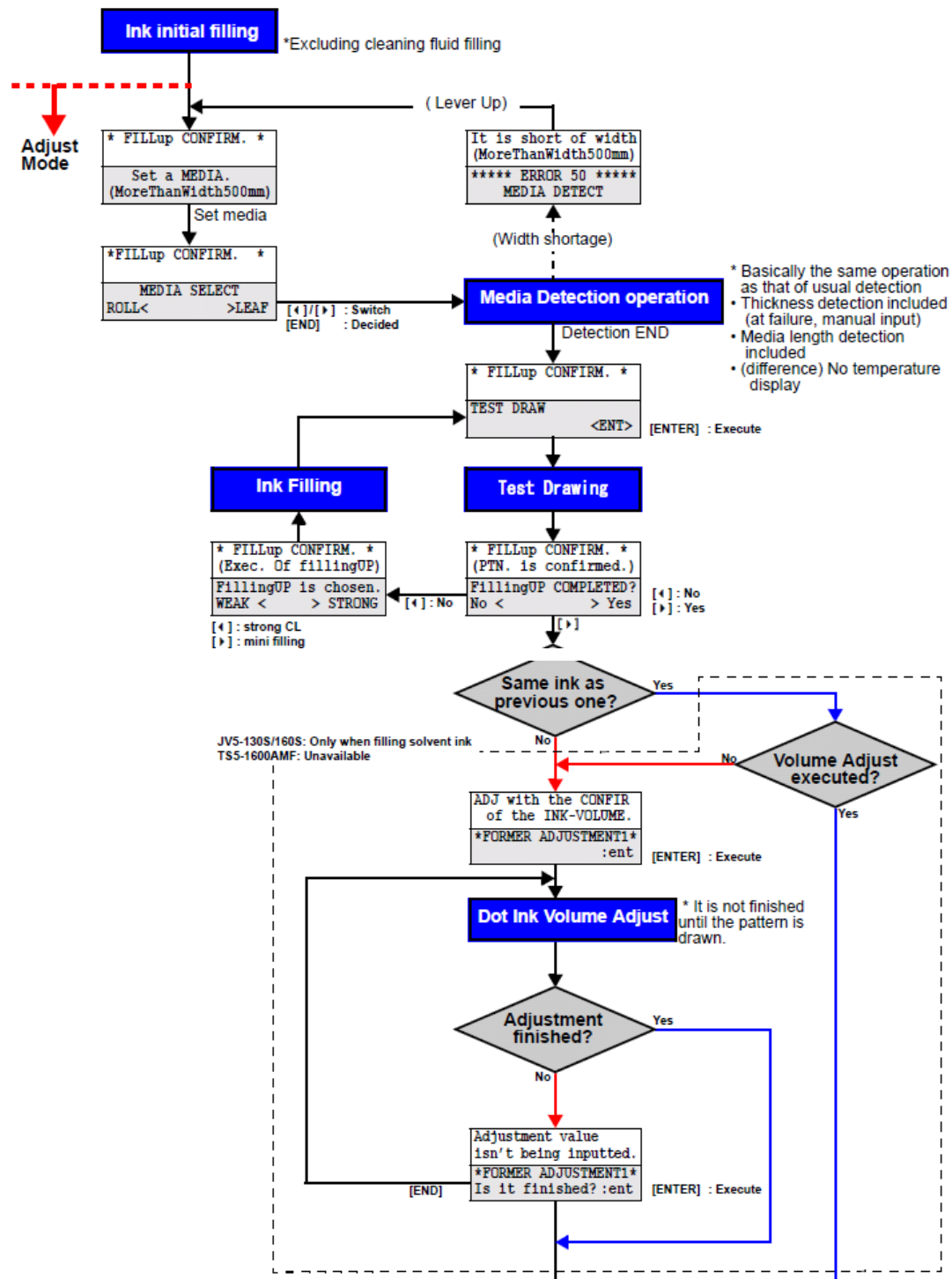
This indication will occur in case of water base filled before.

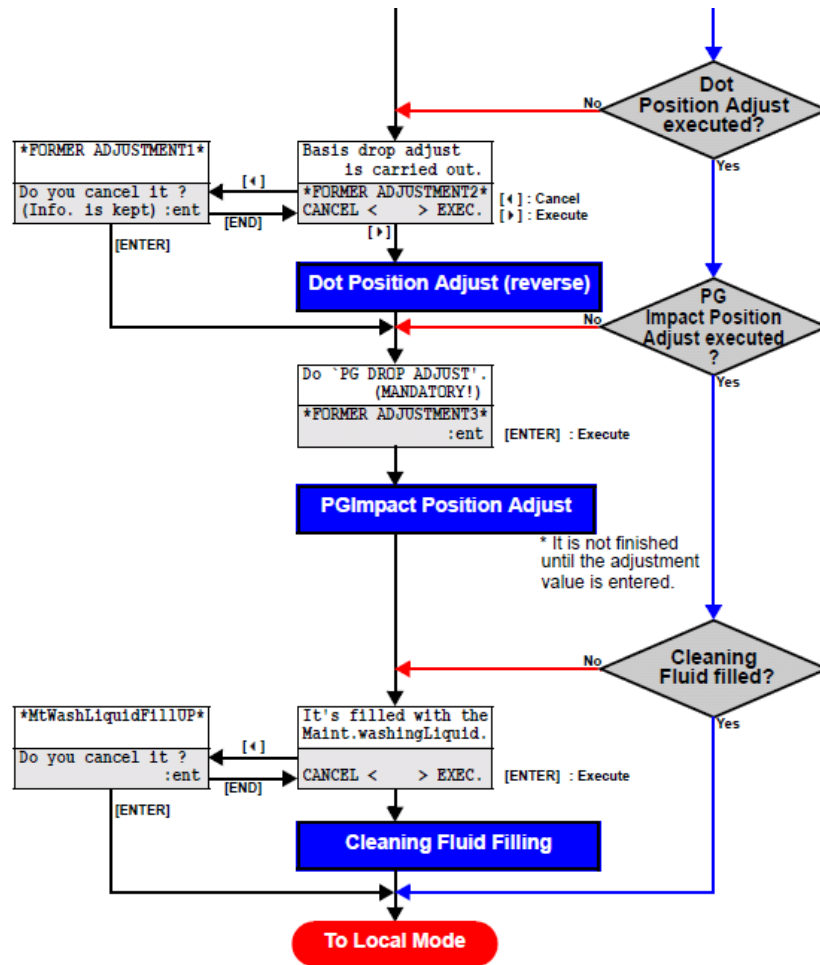
F. Choose ink type when display says [INK TYPE].

G. Choose color setting when display says [**** INK SET].

H. Do filling up with automatic sequence.

I. In case of JV5, filling up confirm sequence below happens.





4. Conclusion

Mimaki has many kind of ink types. It is very difficult to remember those for each products. However customers want to exchange the ink type & color setting sometimes. If you have any questions, please let Tech center know.

MIMAKI USA Tech center

Tomo Harada Cell : 678-381-5854

E-mail : tharada@mimakiusa.com