



Don't be the same, **be better!**



Certified Training Professionals



FLEXI® FOR MUTOH PRINTERS

10 Steps to better color prints using Flexi®

Table of Contents

Introduction 2

No Color Management Gobbledygook..... 2

 Basic Terms You Should Know 2

Steps to Better Printing from FlexiPrint 2

 1) Download and Add the GenericLCD_Monitor.icc profile..... 2

 2) Add the monitor profile to FlexiPrint 3

 3) Change the Input Profile to GenericLCD_Monitor.icc 3

 4) Choose OK to close the Color Settings menu. 3

 5) Draw a rectangle and paint it lime green. 3

 6) Click the soft proof icon to preview the print color. 4

 7) Go back to the EDIT menu and choose Color Settings. 4

 8) Pick your printer and media type, then close the menu. 4

 9) Choose the Rip & Print icon to prepare the file for print. 4

 10) Make sure the settings in the RIP & Print menu match your Color Settings. 5

ValueJet® is a registered trademark of MUTOH. Flexi®, FlexiPrint® and Flexi® Cloud are registered trademarks of SA International. All other products are registered with their respective companies.

Reader shall indemnify, defend and hold harmless Givemehelp, Inc. and its officers, directors, agents and employees from and against claims, damages, losses and expenses, including but not limited to attorneys' fees, arising out of or resulting from the use of any and all of the information within this publication. Reader assumes all risks.

Copyright 2014-Present Givemehelp, Inc and Mark A. Rugen ALL RIGHTS RESERVED.

Introduction

Mutoh printers can produce some awesome colors. Flexi can produce some awesome designs. Matching monitor colors with print colors can be a challenge. This document that will explain how to get the best prints from your Mutoh ValueJet when designing in Flexi. We will discuss the following topics:

- How to soft proof using Flexi.
- How to match monitor to printer.
- How to get bright, vivid colors from design to print.

No Color Management Gobbledygook

Look, the real bottom line to all of what you are about to read is color management. If you want details, just search the internet and you can read tons of gobbledygook about it, but not here.

We are sticking to the basics and the steps not the theory!

Basic Terms You Should Know

Soft Proof – The ability to preview how a color will print using your monitor.

Profiles – Things used by your files, monitor and printer to product color.

Cloud – Where you find stuff for FlexiPrint

Color Mode – RGB, CMYK....won't matter after you read this paper.

FlexiPrint Editor – The design part of FlexiPrint.

ValueJet – The ultimate wide format printer from MUTOH.

Yep, that's it! Let's move on.

Steps to Better Printing from FlexiPrint

1) Download and Add the GenericLCD_Monitor.icc profile

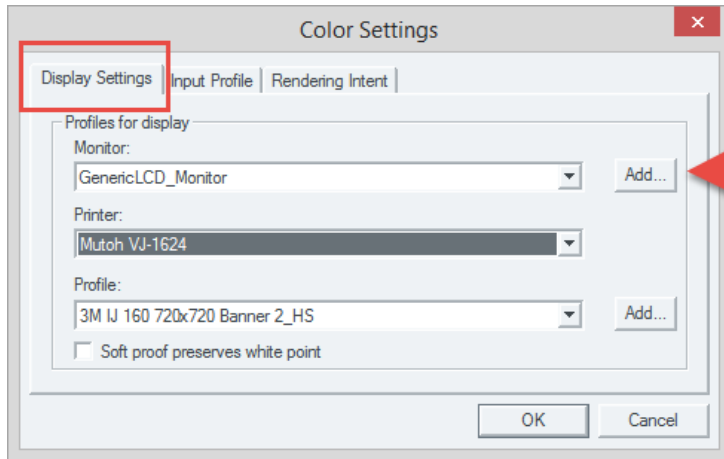
Most of you own a flat screen LCD monitor. That monitor makes some awesome colors, but needs to be tweaked to be accurate. You can make your own monitor profile, go here to find one http://www.tftcentral.co.uk/articles/icc_profiles.htm , or just download mine here: www.givemehelp.com/GenericLCD_Monitor.icc.

I suggest you download mine!

Place the download on your desktop.

2) Add the monitor profile to FlexiPrint

- A. Open the FlexiPrint Editor.
- B. Go to the EDIT menu and choose COLOR SETTINGS
- C. Add the GenericLCD-Monitor.icc profile to the Monitor tab.

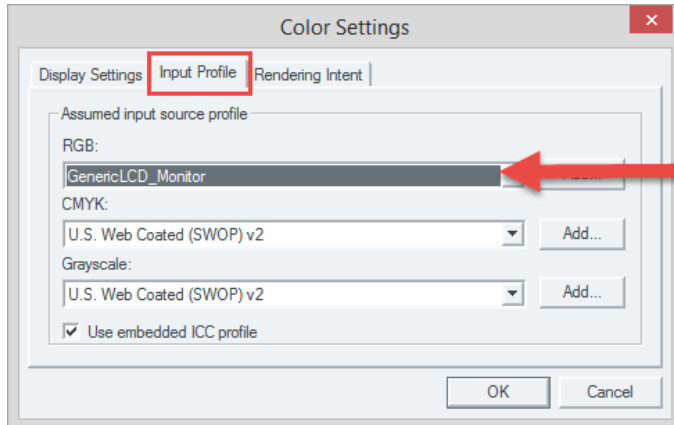


- 1) Go to the EDIT menu
- 2) Choose Color Settings
- 3) Choose the ADD button under the first tab
- 4) Navigate to the location of GenericLCD_Monitor.icc file and it will be added to Flexi.

This need only be done once.

3) Change the Input Profile to GenericLCD_Monitor.icc

Changing the input profile to the same as the monitor profile will allow Flexi to match monitor colors to print colors.



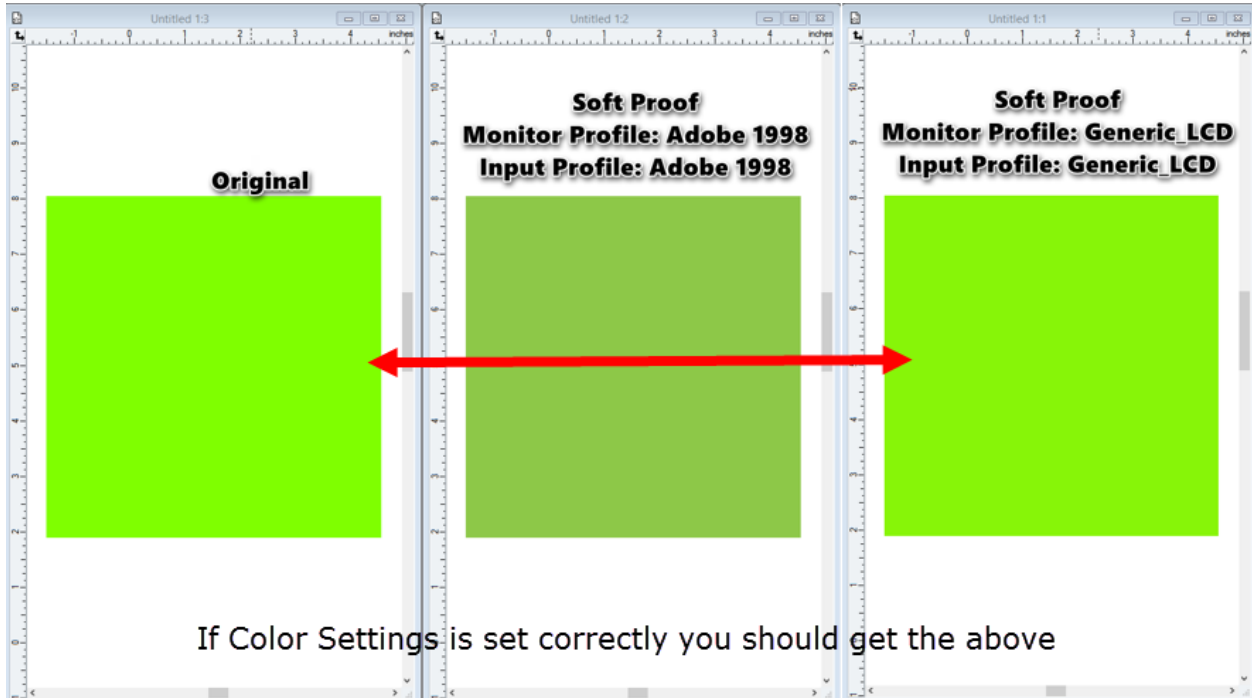
- 1) Change the INPUT profile to the GenericLCD_Monitor.icc profile.

- 4) Choose OK to close the Color Settings menu.
- 5) Draw a rectangle and paint it lime green.

- 6) Click the soft proof icon to preview the print color. It should close match the original lime green. If it does, this is proof you have succeeded.



This icon toggles soft proof on an off. By choosing this icon, you are asking Flexi to preview how an image will print.



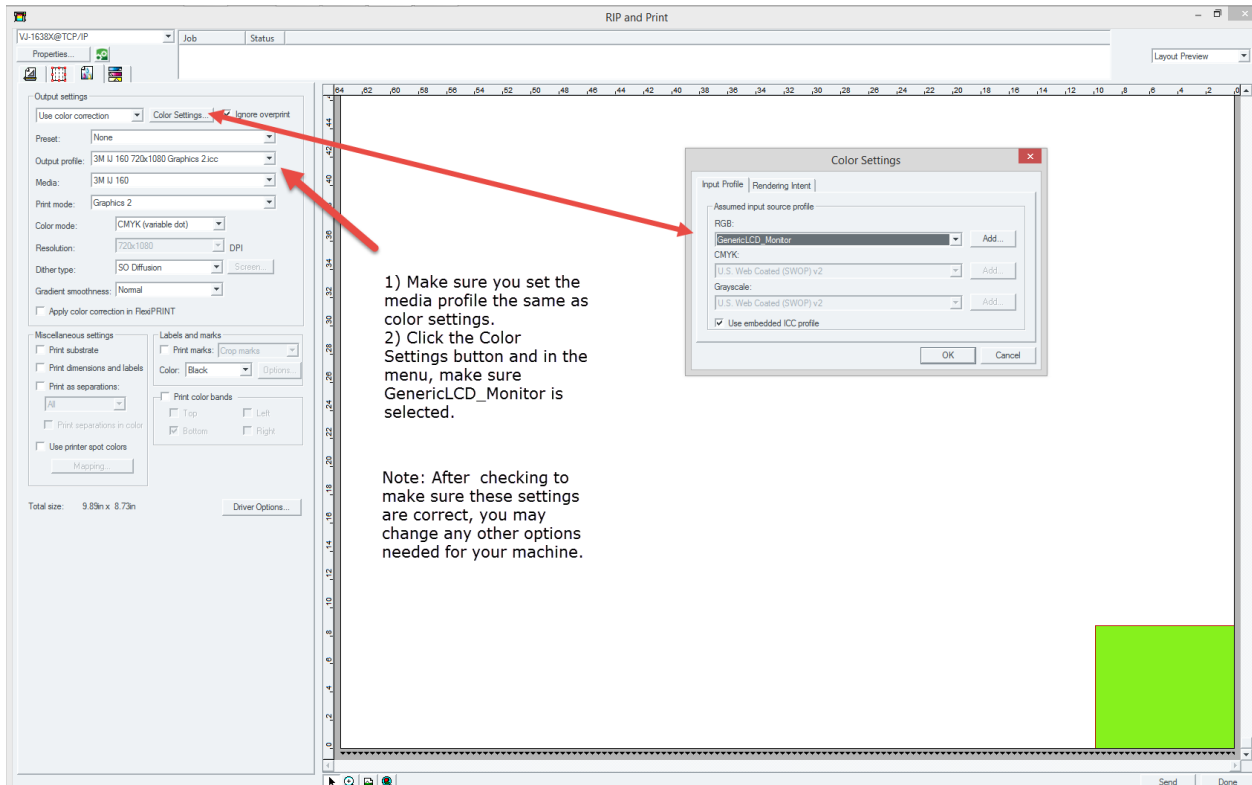
- 7) Go back to the EDIT menu and choose Color Settings.
 8) Pick your printer and media type, then close the menu.
 9) Choose the Rip & Print icon to prepare the file for print.



Choose this icon to start the Rip & Print menu

10) Make sure the settings in the RIP & Print menu match your Color Settings.

Go to the THIRD tab and make sure the media is the same as you used in Color Settings and check the Color Settings Button and make sure it is the same as you did in FlexiPrint.



You file will print and the color it prints should be close....close to the monitor color of lime green.

You just matched monitor color to print color using soft proofing in FlexiPrint!

Real-Life Control

Now this is a pretty simple example and bitmaps and vectors can change differently, but this will get you closer to matching monitor to print.

If you want detailed training on this and many more topics, we suggest you purchase our [Flexi Cloud Training DVD](#), which has hours of video training.

Use this link to find out more:

<http://www.givemehelp.com/flexisigncloudtrainingdvd.htm>

Also, be sure to [visit MUTOH AMERICA](#) for the hottest wide format printers.