

FW Update Tool Software Manual

May. 20, 2016 v2.0



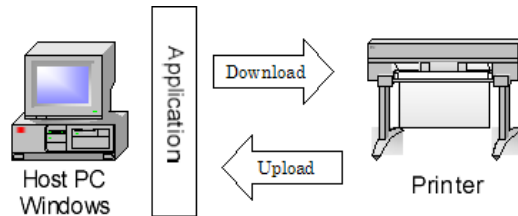
FWUpdateTool3.exe

1. Foreword	2
1.1 What is FW Update Tool	2
1.2 Specification	2
1.3 Installing method	3
1.4 Uninstalling method	3
1.5 Setting file	3
1.6 Precautions	3
2. Upload	4
2.1 Preparation	4
2.2 Procedures	4
2.3 Screens during Executing	5
2.4 Parameter Saving	5
3. Download	6
3.1 Preparation	6
3.2 Procedures	6
3.3 Screens during Executing	7
3.4 End Dialog	7
4. FW Version Upgrade	8
4.1 Preparation	8
4.2 Procedures	8
4.3 Screen during Execution	9
4.4 End Dialog	9
5. Log Upload	10
5.1 Preparation	10
5.2 Procedures	10
5.3 Screen during Execution	11
5.4 Log Saving	11
6. Log Analysis	12
6.1 Preparation	12
6.2 Procedures	12
6.3 Screens during Executing	13
6.4 Saving Result of Log Analysis	13
7. Log Download	14
7.1 Preparation	14
7.2 Procedures	14
7.3 Screens during Executing	14
7.4 End Dialog	15
8. Error Message List	16
9. Setting File (PRM File)	17
9.1 What is PRM File?	17
9.2 AutoPRM	17
9.3 How to get?	17
9.4 Installing PRM File	17
9.5 Uninstalling PRM File	17

1. Foreword

1.1 What is FW Update Tool

FW Update Tool II (hereafter "the Present Tool") is a tool to read the parameters of the printer in the host PC and transmit from host PC to the printer. It is a successor version of FW Update Tool II(hereafter "the Previous Tool").



- (1) Function to read a parameter from the printer to the host PC. (referred to as Upload hereafter)
- (2) Function to send a parameter from the printer to the host PC. (referred to as Download hereafter)
- (3) F/W Version upgrade in a field service and etc. (referred to as FW VersionUpgrade hereafter)
- (4) Function to read log from the printer to the host PC. (referred to as Log Upload hereafter)
- (5) Function to send log from the host PC to the printer. (referred to as Log Download hereafter)
- (6) Function to analyze log data (referred to as Log Analysis hereafter)

1.2 Specification

Supporting Interface

- (1) IEEE1284
- (2) IEEE1394*1
- (3) USB*1

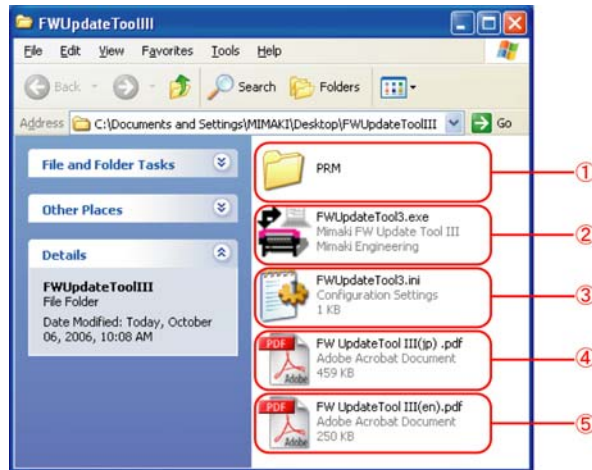
*1 For each interface, installation of the MIMAKI device driver is required. The operating environment of each interface shall follow the specification of the MIMAKI device driver.

Operating Environment

OS: Windows XP, Vista, 7, 8, 10

1.3 Installing method

There is no installer for the Present Tool. It is supplied as compressed file of self-expanding type. Decompress it anywhere on your computer and use it. When it is decompressed, the following folders are created.



1) PRM Folder

The folder where PRM file is installed.

2) FWUpdateTool2.exe

The main body of the Tool itself.

3) FWUpdateTool2.ini

This is tool information file. (Does not exist when the file is decompressed. This file is automatically created when the tool is activated.)

4),5) Tool Manual(xx).pdf

Handling Manuals. Available both in Japanese and English versions.

1.4 Uninstalling method

There is no uninstaller for this tool. When you want to uninstall the tool, delete all above files and folders.

*Caution: Do not delete the files and folders or change the file name mentioned in 1), 2) and 3) above or don't change the file, unless you uninstall the tool.

1.5 Setting file

To perform uploading or downloading of parameters, the setting file for each type of equipment. Such setting file is called PRM file. For details on PRM file please refer to Chapter 10.

Models that support AutoPRM do not require PRM files.

1.6 Precautions

- a) Connection of multiple printers is not supported. Make sure to use with one-to-one connection.
- b) It is necessary that the device driver for the interface to be used is installed on the host PC.

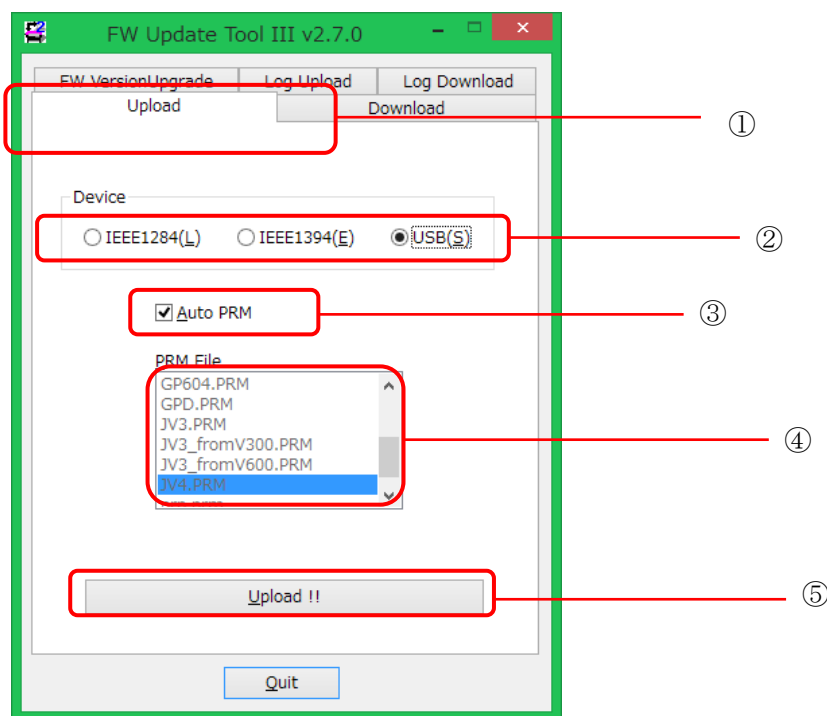
2. Upload

Upload is a function to read the parameters from the printer in the host PC. Explanation will be made on Upload function.

2.1 Preparation

- 1) Connect the printer and the host PC with designated cable.
- 2) Set the printer in Upload & Download mode. For setting method, please refer to the Maintenance Manual of the Printer.

2.2 Procedures



- 1) Upload tab selection

This is to select Upload tab.

- 2) Interface selection

Select interface with which the printer is connected.

- 3) Auto PRM

Models that support AutoPRM do not require PRM files. Add a check mark to AutoPRM to execute Upload/Download.

- 3) Printer (PRM) selection

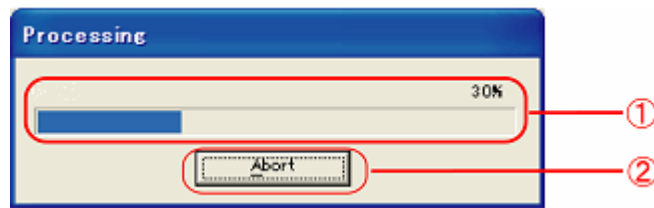
For models that do not support AutoPRM, select a PRM file.

- 4) Upload!!

Executes upload.

2.3 Screens during Executing

When Upload starts, the following dialog is displayed and the progress status is displayed.



1) Progress status

The progress of the process is displayed with % and status bar.

2) Abort

Upload is suspended if you click this button.

2.4 Parameter Saving

After completion of the upload, the parameter saving screen opens automatically. Enter file name and save uploaded parameter. If you enter only the file name, the extension (.csv) will be added automatically.

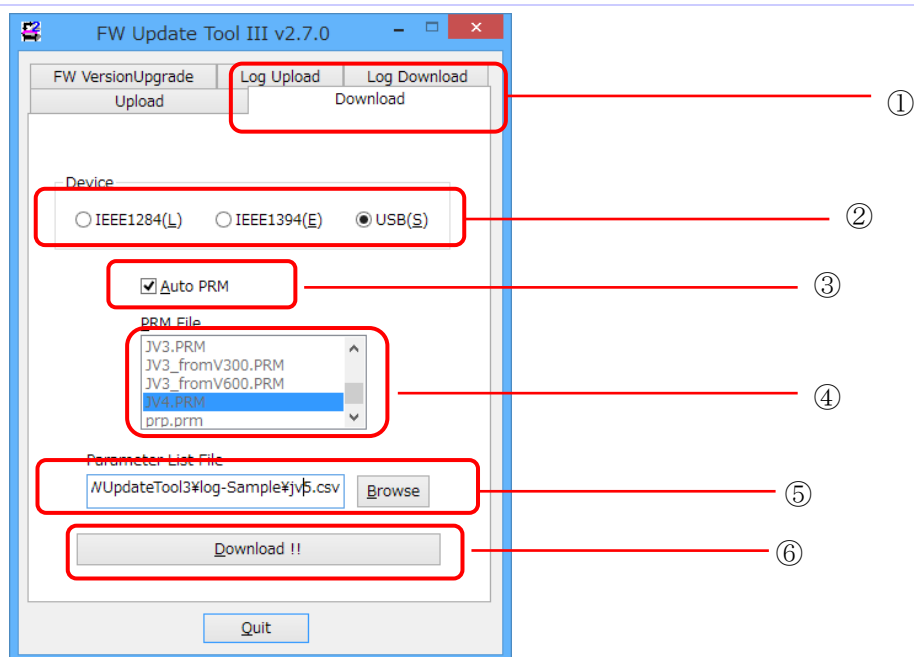
3. Download

Download is a function to send the parameter file stored in the host PC to the printer. Explanation is made on Download function.

3.1 Preparation

- 1) Connect the Printer and the PC with designated cable.
- 2) Set the printer in Upload & Download mode. For setting method, please refer to the Maintenance Manual of the Printer.

3.2 Procedures



1) Download tab selection

This is to select Download tab.

2) Interface selection

Select interface with which the printer is connected.

3) Auto PRM

Models that support AutoPRM do not require PRM files. Add a check mark to AutoPRM to execute Upload/Download.

4) Printer (PRM) selection

For models that do not support AutoPRM, select a PRM file.

5)Parameter file selection

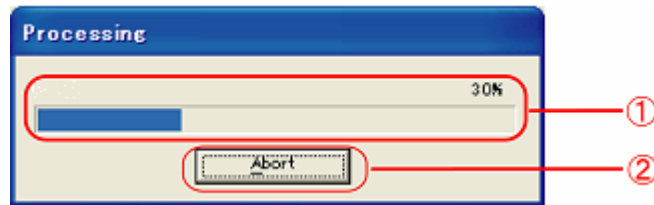
By clicking the Browse button, select the parameter file (CSV file) you wish to transfer to the plotter. When selected, the file name is displayed in the box. It is also possible to select by drag and drop of the file to this box.

6) Download!!

Executes download.

3.3 Screens during Executing

When Download starts, the following dialog is displayed and the progress status is displayed.



1) Progress status

The progress of the process is displayed with % and status bar

2) Abort

Download is suspended if you click this button.

3.4 End Dialog

When transferring parameter has been completed, the dialog of “Data transfer has been completed.” will be displayed. Check the state of the printer to confirm that the Download has been completed normally.

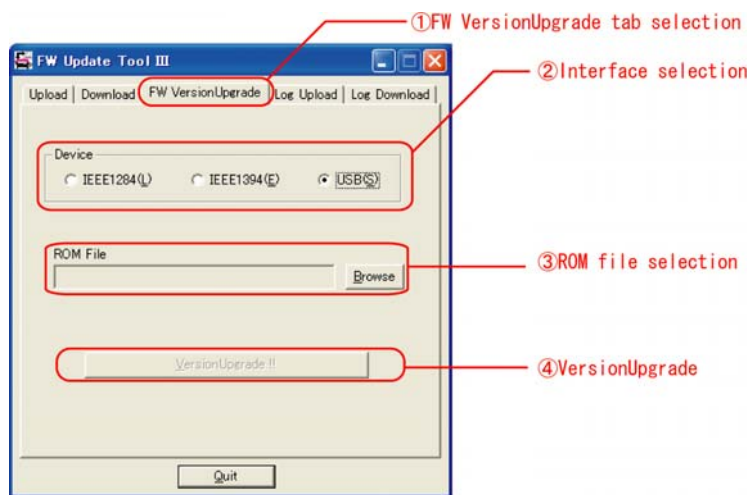
4. FW VersionUpgrade

VersionUpgrade is a function to transfer to the printer the ROM file to upgrade (also possible to downgrade) the version of the firmware of the printer. Explanation is made on VersionUpgrade function.

4.1 Preparation

- 1) Connect the Printer and the PC with designated cable.
- 2) Set the printer in Upgrade mode. As for the setting method, please refer to the Maintenance Manual of the printer.

4.2 Procedures



1) FW VersionUpgrade tab selection

This is to select FW VersionUpgrade tab.

2) Interface selection

Select interface with which the printer is connected.

3) ROM file selection

By clicking the Browse button, select ROM file for version upgrading. When selected, the file name is displayed in the box. It is also possible to select by drag and drop of the file to this box.

Drag and Drop (D&D)

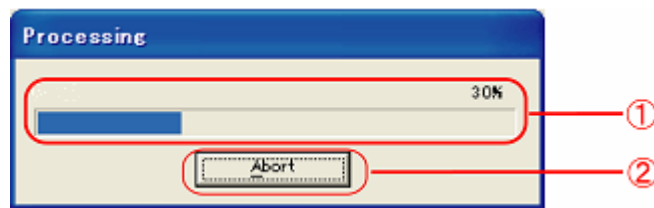


4) VersionUpgrade!!

Executes Version Upgrade.

4.3 Screen during Execution

When VersionUpgrade starts, the following dialog is displayed and the progress status is displayed.



1) Progress status

The progress of the process is displayed with % and status bar.

2) Abort

VersionUpgrade is suspended if you click this button.

4.4 End Dialog

When transferring ROM file has been completed, the dialog of “Data transfer has been completed.” will be displayed. Check the state of the printer to confirm that the Version Upgrade has been completed properly.

5. LogUpload

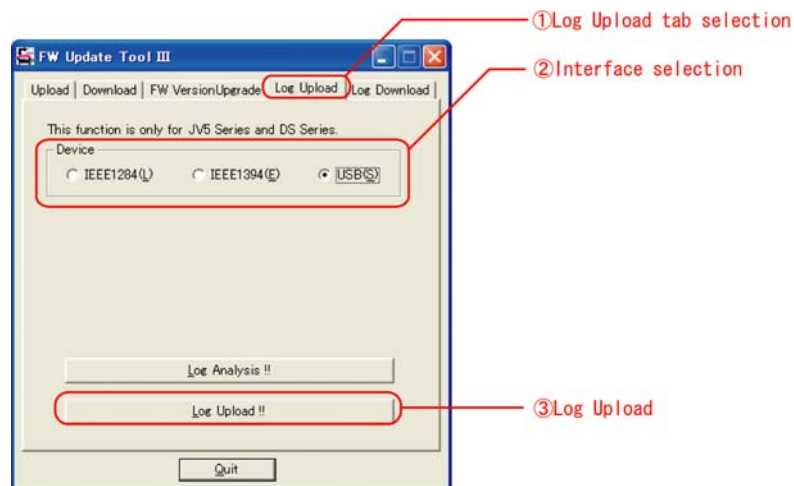
LogUpload is the function to read log data from the printer to the host PC. Explanation is made on LogUpload function.

Some models do not support logs. For more details, please check the following table.

5.1 Preparation

- 1) Connect the Printer and the PC with designated cable.
- 2) Set the printer in Upload & Download mode. As for the setting method, please refer to the Maintenance Manual of the printer.

5.2 Procedures



1) Log Upload tab selection

This is to select Log Upload tab.

2) Interface selection

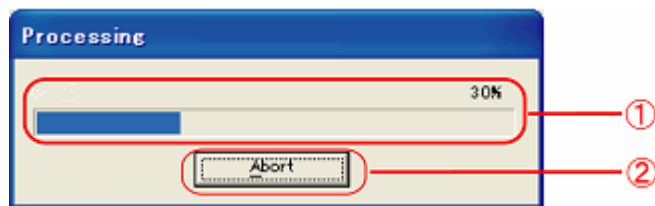
Select interface with which the printer is connected.

3) Log Upload!!

Executes Log Upload.

5.3 Screen during Execution

When Log Upload starts, the following dialog is displayed and the progress status is displayed.



1) Progress status

The progress of the process is displayed with % and status bar.

2) Abort

Log Upload is suspended if you click this button.

5.4 Log Saving



When Upload has been completed normally, parameter saving screen will open automatically. Enter a file name to save the uploaded parameter. You need not enter the extension (.log), as it will be automatically added after the file name.

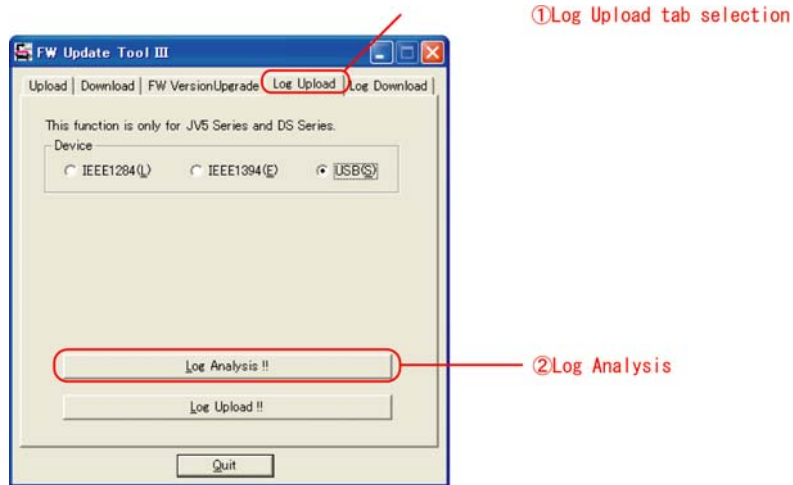
6. Log Analysis

Log Analysis is the function to analyze the read log data and write into a CSV format file.
Some models do not support logs. For more details, please check the following table.

6.1 Preparation

- 1) Upload Log data (extension: .log) from the host PC.

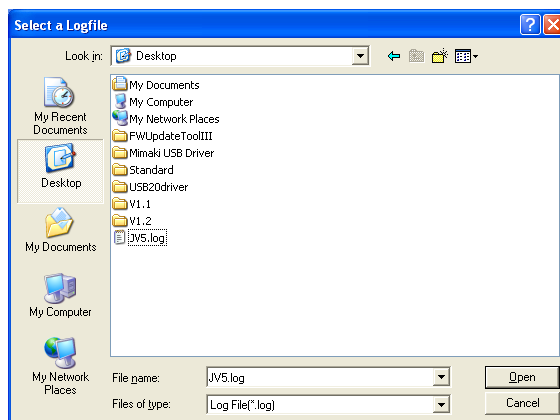
6.2 Procedures



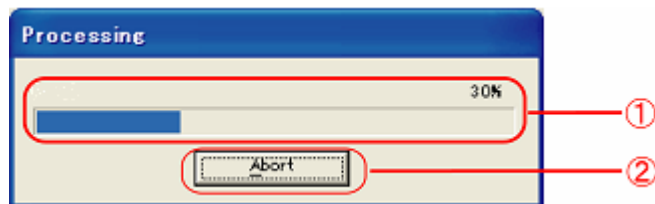
- 1) Log Upload tab selection
This is to select Log Upload tab.
- 2) Log Analysis!!
Executes Log Analysis.

6.3 Screens during Executing

When Log Upload starts, the following dialog to select a log file to be analyzed will be displayed.



Press [Open] button to display the progress status.



1) Progress status

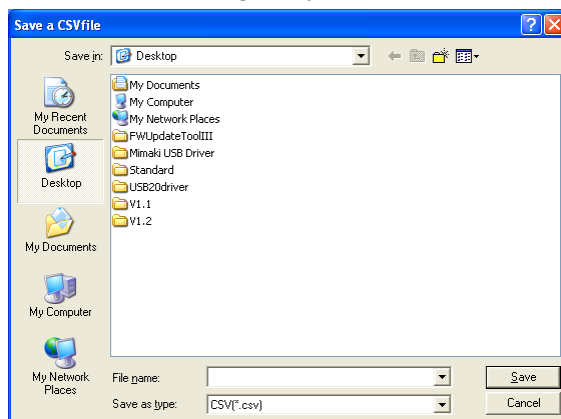
The progress of the process is displayed with % and status bar

2) Abort

Log Analysis is suspended if you click this button.

6.4 Saving Result of Log Analysis

When Log Analysis has been completed normally, saving screen will open automatically. Enter a file name to save the result of the log analysis.



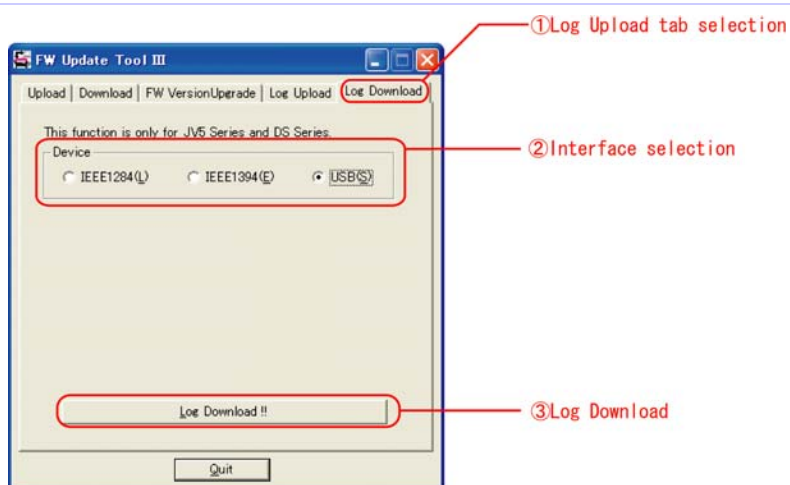
7. Log Download

LogDownload is the function to send log file saved in the host PC to the printer. Explanation is made on LogDownload function.

7.1 Preparation

- 1) Connect the Printer and the PC with designated cable.
- 2) Set the printer in Upload & Download mode. As for the setting method, please refer to the Maintenance Manual of the printer.

7.2 Procedures



- 1) Log Download tab selection

This is to select Log Download tab.

- 2) Interface selection

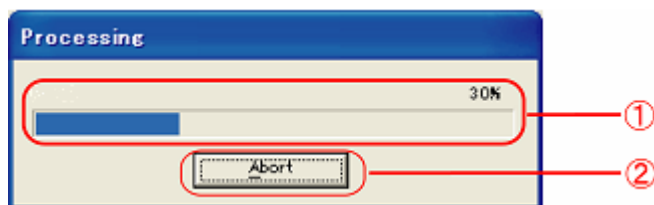
Select interface with which the printer is connected.

- 3) Log Download!!

Executes Log download.

7.3 Screens during Executing

When download starts, the following dialog is displayed and the parameter name being downloaded and the progress status of download are displayed.



1) Progress status

The progress of the process is displayed with % and status bar

2) Abort

Log Download is suspended if you click this button.

7.4 End Dialog

When transferring parameter has been completed, the dialog of “Data transfer has been completed.” will be displayed. Check the state of the printer to confirm that the Download has been completed normally.

8. Error Message List

This is the list of error messages displayed by the tool and how to deal with them.

Error Message	Cause	Countermeasures
Cannot open PRM file.	Cannot open PRM file	Restart the tool and designate the PRM file once again.
This is not PRM file. Select proper file.	The file you tried to install was not PRM file.	Install proper file.
The form of PRM file is abnormal	Some portion in PRM file is different form from designated.	Re-install PRM file. As for the method for reinstallation, refer to Chapter 6.
Cannot open ROM file	Cannot open ROM file	Restart the tool and designate the ROM file once again.
System Error.	This is system error.	Restart the PC and the printer, and perform the process once again.
The following parameter kind name cannot be found in PRM file. This parameter is not download.	You are using PRM file for old FW version. A portion of parameter written in parameter file has not been download.	Obtain PRM file of corresponding version.
Cannot receive the data. Check the status of the printer.	Error occurred while sending and receiving.	Check if the printer is in proper mode. Check if the printer and the host PC are properly connected
Cannot transmit the data. Check the status of the printer.		
Hash error. The received data may be broken	The received data are broken	Restart the tool and the printer and perform upload once again
Cannot open parameter file.	Cannot open parameter file.	Restart the tool and designate parameter file once again.
The form of Parameter file is abnormal	Parameter file has portions different from predefined form or this is not a parameter file.	Designate correct parameter file.
Failed to prepare file.	Preparation if file after uploading failed due to some causes.	Restart the tool and the printer and perform upload once again.
The printer is not connected or power is not on.	The printer is not connected or power is not on.	Check if the printer power is on. Make sure the printer and the host PC are connected properly. Check if the device driver of the interface to be used is used.
More than one printers are connected. Disconnect the printer not in use.	Two or more printers are connected.	Disconnect the printer not in use.

9. Setting File(PRM File)

9.1 What is PRM File?

PRM file is a setting file on which parameter information to be uploaded/downloaded is entered. Without this file, upload and download of the parameter cannot be performed.

PRM file is provided for each kind of machine (for each version depending on the cases). It is necessary to provide those meeting with the type of equipment used. The PRM file used in the Previous Tool may be used as it is.

9.2 AutoPRM

Models that support AutoPRM do not require PRM files. Add a check mark to AutoPRM to execute Upload/Download.

9.3 How to get?

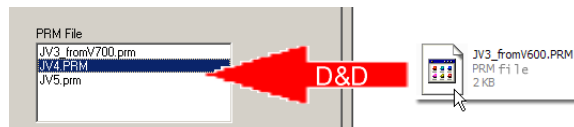
Obtain the PRM files from the Mimaki member's page.

9.4 Installing PRM File

A new PRM file may be installed into the tool in the following manner:

Drag and drop

You may add to the list by performing drag and drop in the List Box displaying equipment type name (PRM).



9.5 Uninstalling PRM File

The PRM file may be uninstalled from the tool in the following manner:

Right click menu

If you right-click the equipment name on the list, a menu will be displayed. If you select [remove] you may delete from the list..

