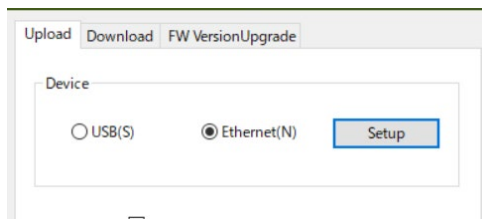
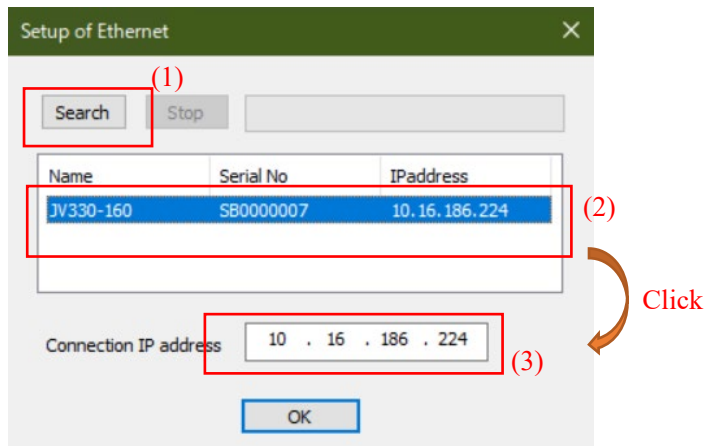


How to connect Ethernet

- Click the Setup button and the Ethernet setup screen opens.



Description of setup screen



- (1) This button searches the connected printer.

Search can be executed in both Upload/Download mode and normal local mode.

- (2) The printer's name, serial number, and IP address of the searched printer are displayed. If there are multiple printers on the network, multiple printers are displayed.

Immediately after turning on the printer, it may take about one minute to search the printer.

Please note that the power is turned on again when the mode moves to the Upload/Download mode.

- (3) When clicking on the name of the searched printer, the IP address is copied to the Connection IP address.

Connection will be executed to the printer of this IP address.

- Upload, Download, and VersionUpgrade all have Setup buttons, but all setting values are the same.
- The last connected IP address is recorded. When connecting to the same IP address at the next startup, setup is not needed.
- Ethernet LogUpload is slower than USB. This is the limitation of Mimaki Ethernet specification.

When connecting to a cutting plotter

To connect Ethernet to a cutting machine such as CG, CF, or APC, open FWUpdateTool3.ini and change SetRIPIP to 0.

When it is printer, a number is 1.

```
[default]
AutoPrm=1
Device=5
Tab=0
UpCheck=0
Ether_address=10.16.186.224
Ether_port=11110
SetRIPIP=1;for CG series = 0, for Inkjet = 1
VerROM=C:\Users\takuya_iwashita\Downloads\UJF3042Mk
DownCSV=C:\Users\takuya_iwashita\Downloads\sw-ujf304
PRM=UJF3042mkII.prm
MaxPrmGetGetEther=1000
```

When Microsoft Visual C++ 2015-2019 Redistributable(x86) is not installed, Ethernet cannot be used. If you can't find it by searching for the printer, check if it is installed.



Microsoft Visual C++ 2015-2019 Redistributable
(x86) - 14.22.27821

Click the following to download. Install x86 version even on a 64bit OS.

https://aka.ms/vs/17/release/vc_redist.x86.exe