

# JV3-160S

---

## MECHANICAL DRAWING

Ver 1.10

**MIMAKI ENGINEERING CO., LTD.**

TKB Gotenyama Building, 5-9-41, Kitashinagawa, Shinagawa-ku, Tokyo 141-0001, Japan

Phone: +81-3-5420-8671 Fax: +81-3-5420-8687

URL: <http://www.mimaki.co.jp/>

E-mail: [traiding@mimaki.co.jp](mailto:traiding@mimaki.co.jp)



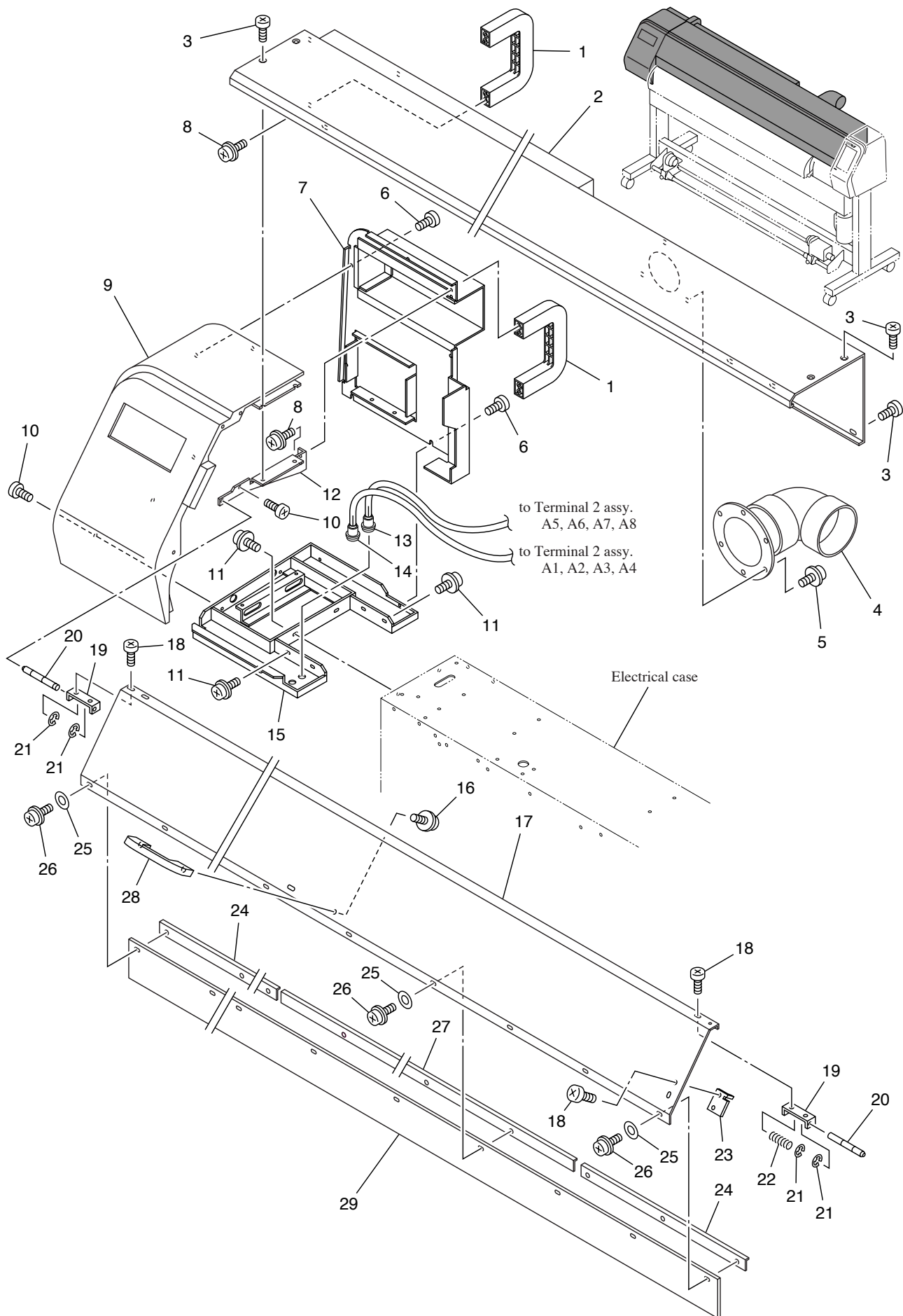
---

## TABLE OF CONTENTS

---

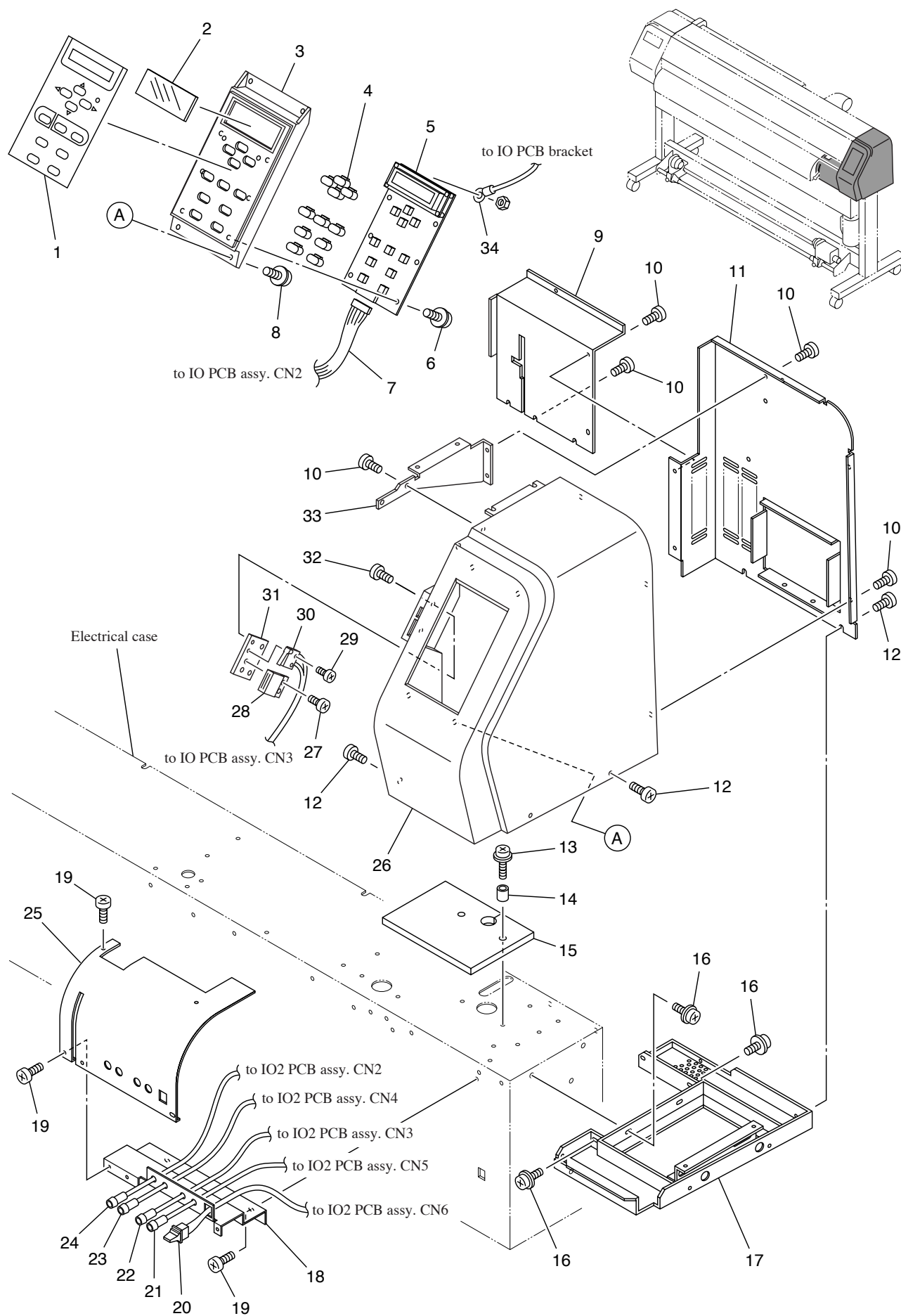
COVER ASSY. - 1/3 .....	4
COVER ASSY. - 2/3 .....	6
COVER ASSY. - 3/3 .....	8
FRAME ASSY.....	10
LEG ASSY.....	12
Y-BAR ASSY.....	14
PLATEN ASSY. - 1/2 .....	16
PLATEN ASSY. - 2/2 .....	18
X-DRIVE ASSY. ....	20
Y-DRIVE ASSY.....	22
CLAMP ASSY. - 1/2 .....	24
CLAMP ASSY. - 2/2 .....	26
SLIDER ASSY.....	28
HEAD ASSY. - 1/2 .....	30
HEAD ASSY. - 2/2 .....	32
STATION ASSY. ....	34
WIPER ASSY. ....	36
CARTRIDGE ASSY. ....	38
ROLL ASSY. ....	40
TAKE-UP DEVICE ASSY. - 1/2 .....	42
TAKE-UP DEVICE ASSY. - 2/2 .....	44
ELECTRICAL UNIT ASSY. - 1/3 .....	46
ELECTRICAL UNIT ASSY. - 2/3 .....	48
ELECTRICAL UNIT ASSY. - 3/3 .....	50
FRONT EXHAUST DEVICE ASSY. ....	52

# COVER ASSY. - 1/3





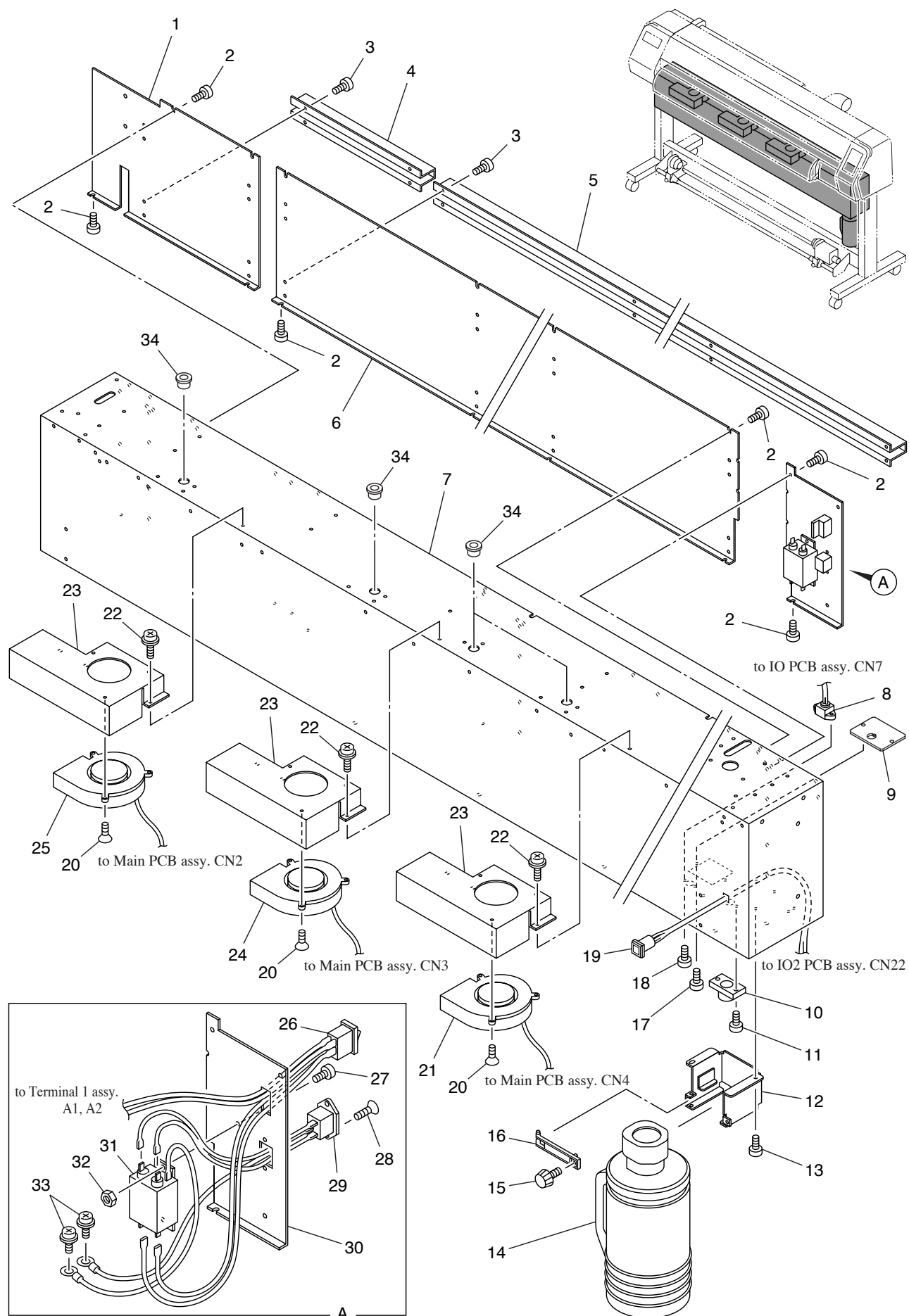
## COVER ASSY. - 2/3



[illegible]

Q:Quantity used R:Recommended part C:Consumables S:Selectable part O:Option

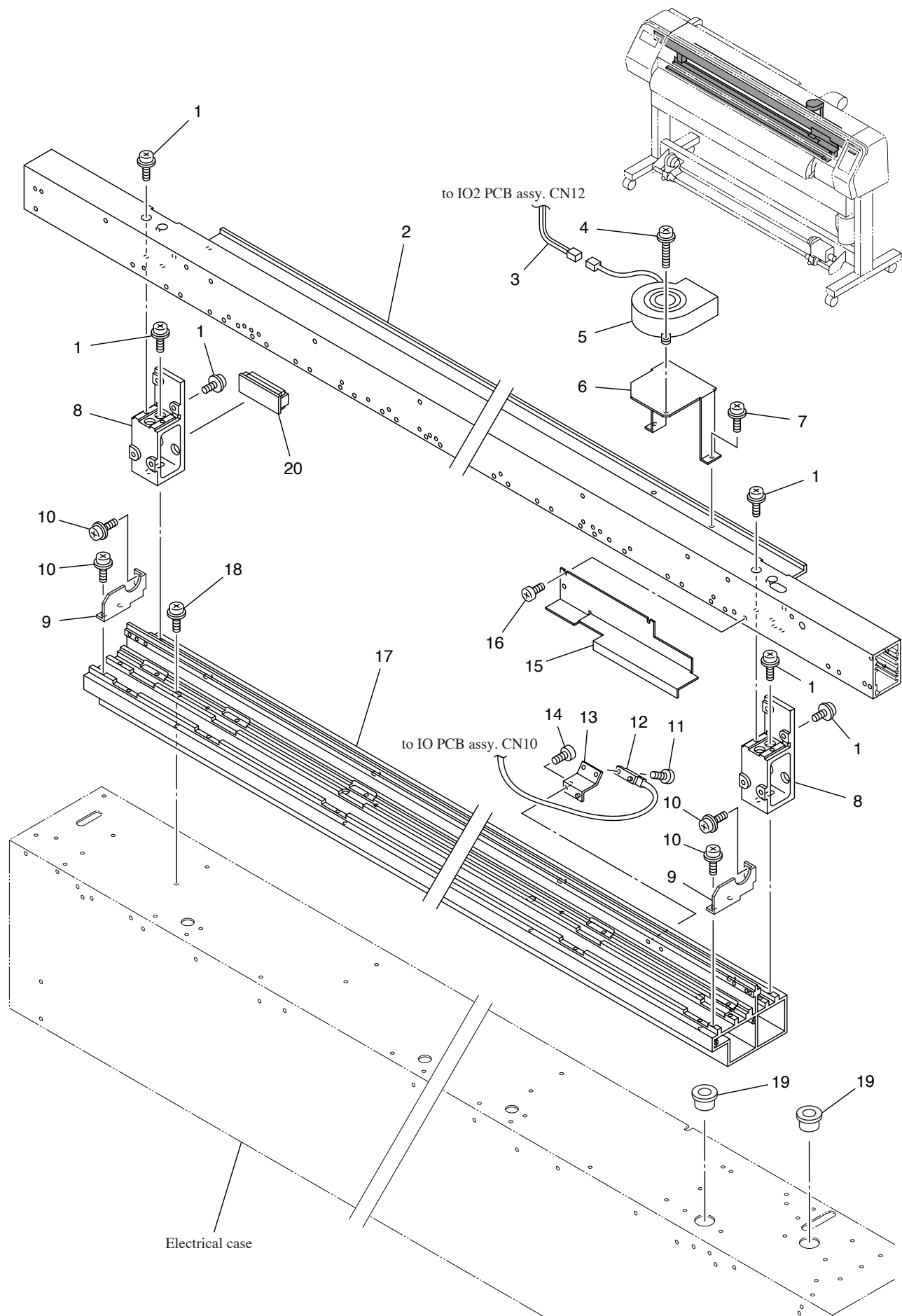
# COVER ASSY. - 3/3





No.	Part codes	Name of part	Q	R/C	S/O	Remarks
1	M504107	Electrical cover LS	1			
2		Screw	18			B3x6 black
3		Screw	12			B3x6 Ni
4	M503998	Guide rail L	1			
5						
	M504000	Guide rail R 160S	1			JV3-160S
6						
	M504110	Electrical cover C 160S	1			JV3-160S
7						
	M504118	Electrical case 160S	1			JV3-160S
8	E102198	Take-up device junction cable assy.	1			
9	M504149	OP connector cover	1			
10	M203655	Tube end	1			
11		Screw	2			B3x6 black
12	M504002	Tank guide S	1			
13		Screw	2			B3x6 black
14	M005085	Waste ink tank 2L assy.	1			
15		Face screw	1			Urea N1-M3, L=8 black
16	M600654	Wast ink tank guard	1			
17		Screw	2			B3x6 black
18		Screw	2			B2x8
19	E102334	Remote switch assy.	1			
20		Screw	9			F3x8 black
21	E102199	Fan motor 1 assy.	1			
22		Screw	9			P3x6 SMW
23	M503988	FM-bracket	3			
24	E102200	Fan motor 2 assy.	1			
25						
	E102225	Fan motor 3 160 assy.	1			JV3-160S
26	E102299	AC switch assy.	1			
27		Screw	2			B4x8 black
28		Screw	2			F3x8 black
29	E102219	Inlet assy.	1			
30	M504108	Electrical cover RS	1			
31	E102324	Noise filter assy.	1			
32		Nut	2			N-4
33		Screw	2			P4x8 SMW
34		Bushing	4			TB-1116

# FRAME ASSY.

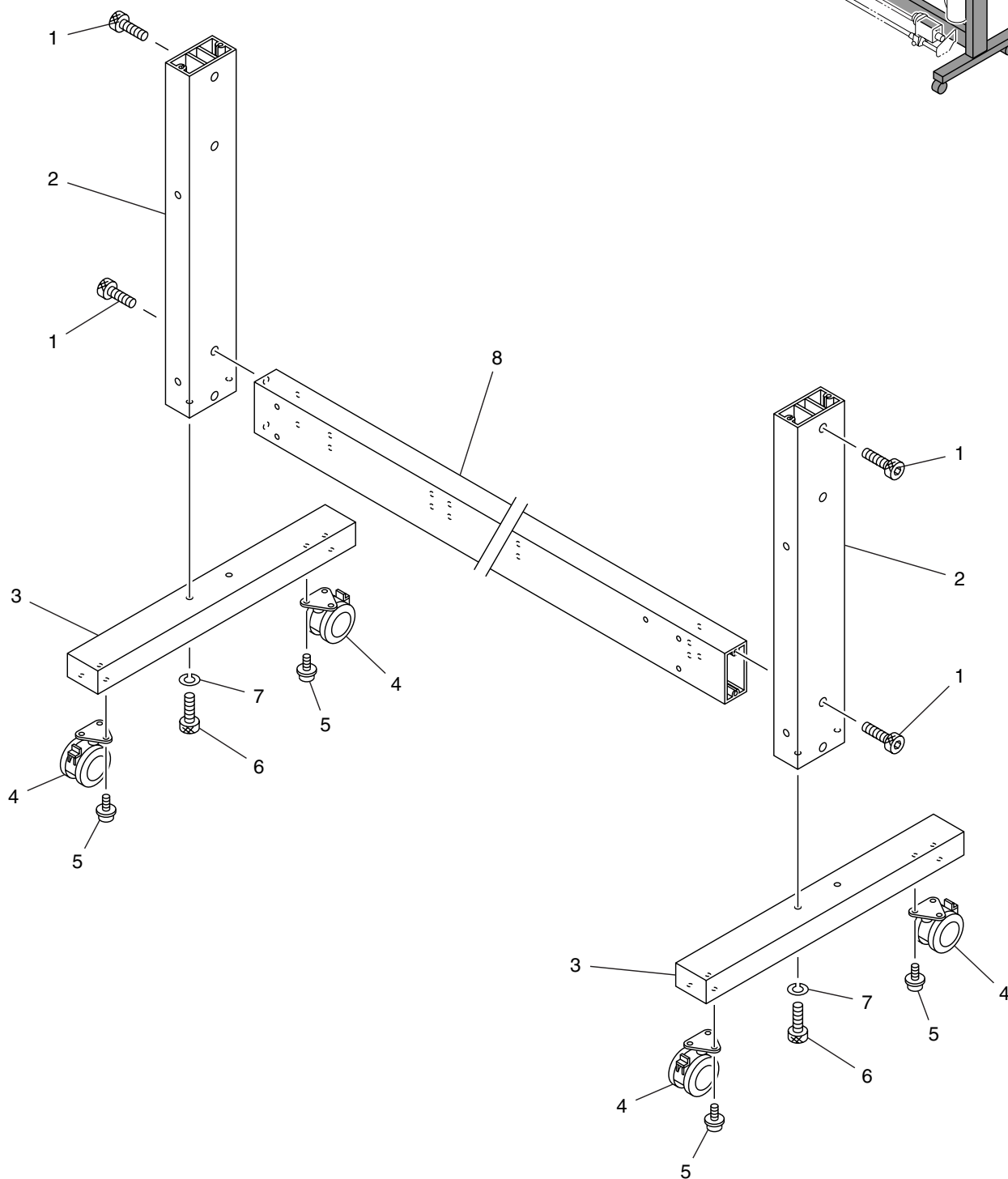
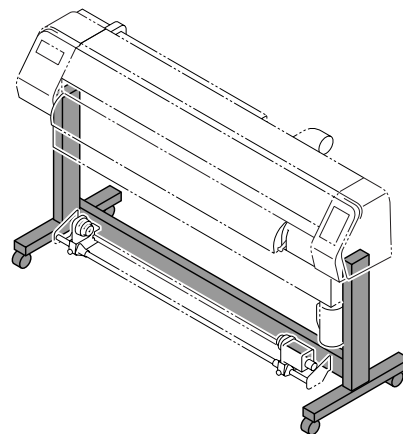


[illegible]

Q:Quantity used   R:Recommended part   C:Consumables   S:Selectable part   O:Option

## LEG ASSY.

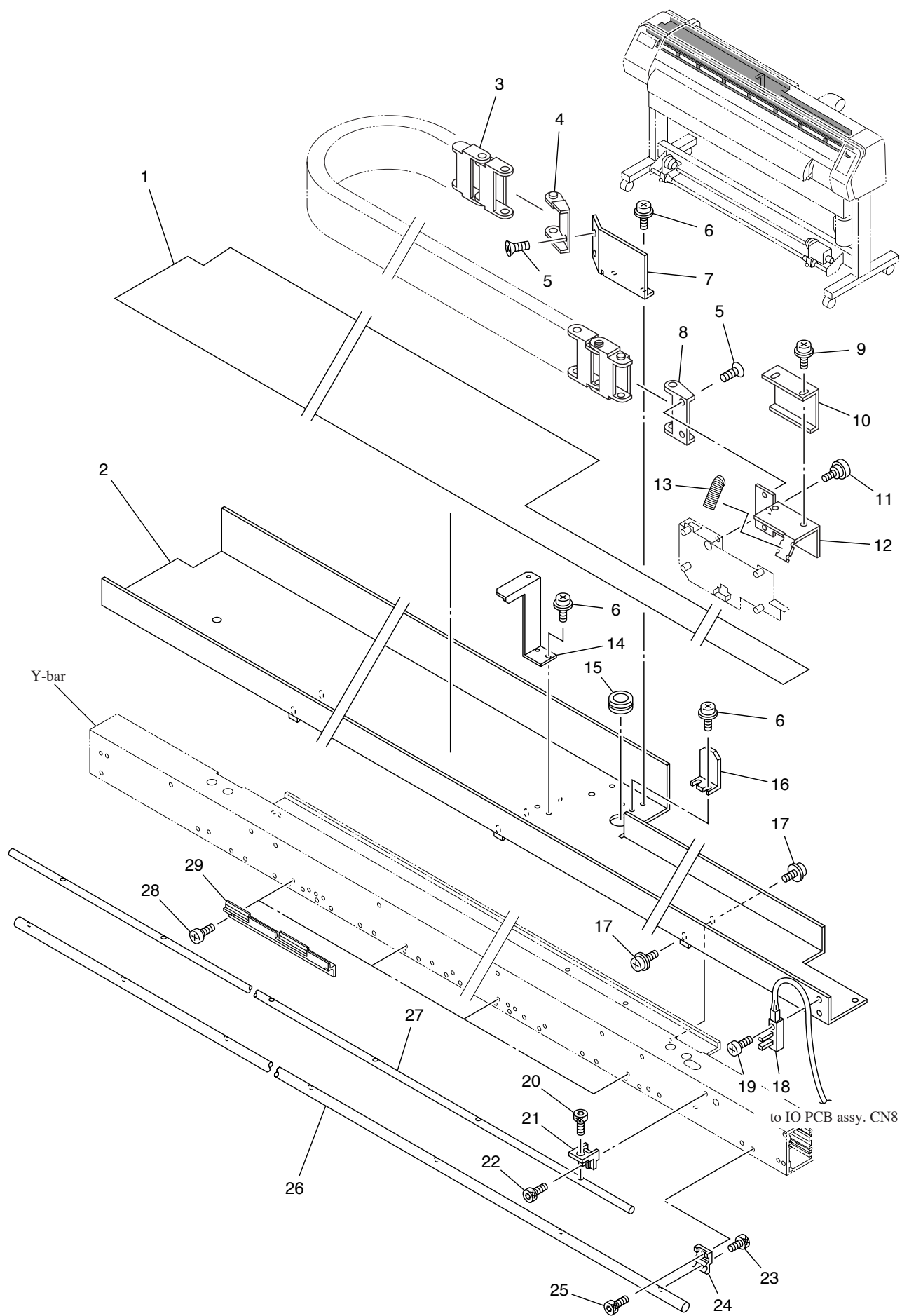
---



[illegible]

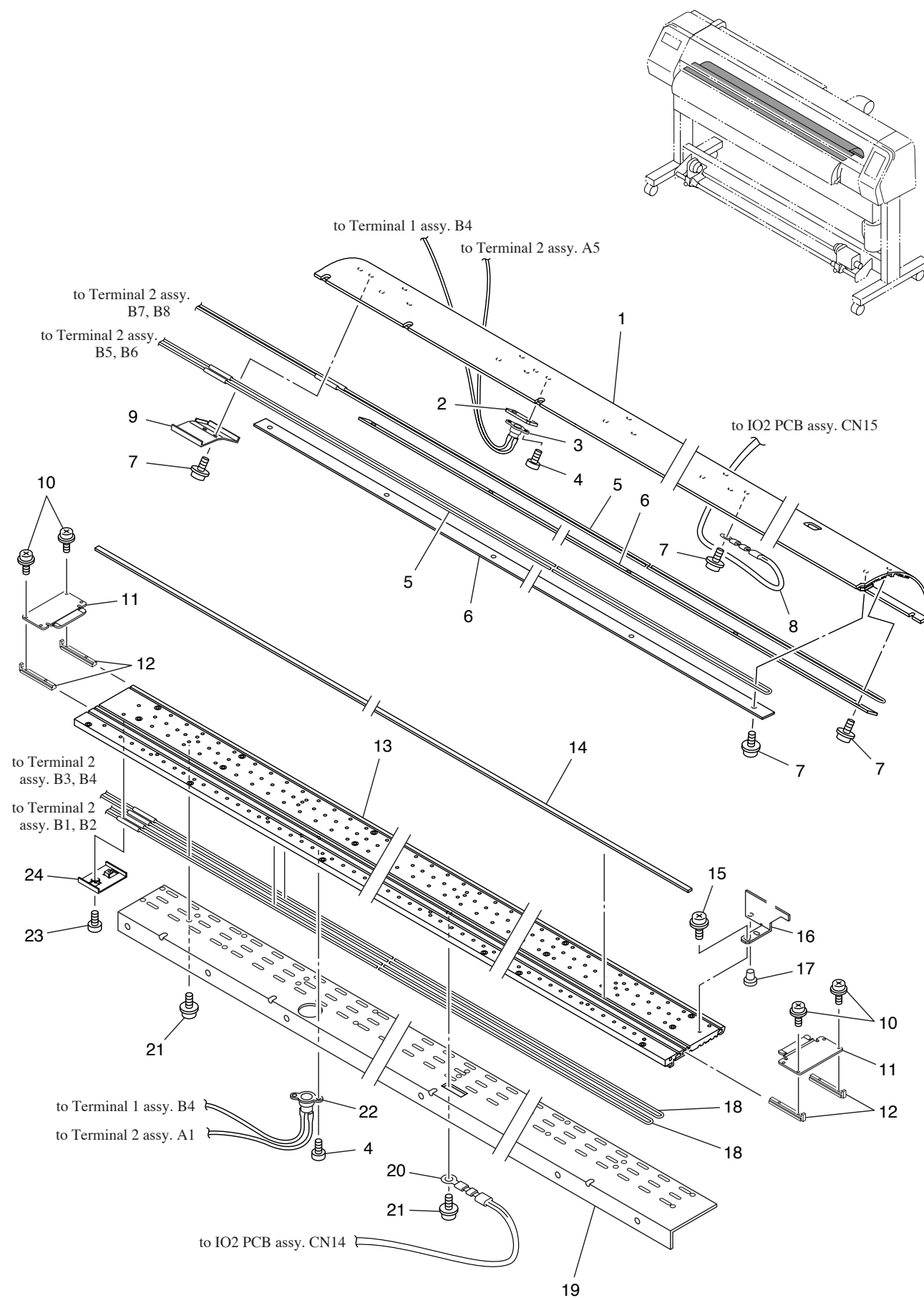
Q:Quantity used R:Recommended part C:Consumables S:Selectable part O:Option

# Y-BAR ASSY.



No.	Part codes	Name of part	Q	R/C	S/O	Remarks
1	M601228	Bear guide filme 160S	1			JV3-160S
2	M503932	Bear guide 160S	1			JV3-160S
3	M601226	Bear 160S Joint 44	1			JV3-160S
4		Runner flex frange (pivot)	1			06.64.2
5		Screw	4			F3x5
6		Screw	6			P3x6 SMW
7	M503417	Bear base	1			
8		Runner flex frange (hole)	1			06.64.1
9		Screw	2			P3x8 SMW
10	M504006	FPC holder S	1			
11	M400233	Bear holder screw	1			
12	M504005	Bear holder	1			
13		Tube	0.08m			PI 16BL
14	M503912	Y-cover stay	1			
15		Grommet	1			C-30-NG-79-N
16	M503388	FPC holder	1			
17		Screw	8			P3x6 SMW JV3-160S
18	E102207	Origin sensor assy.	1			
19		Screw	1			B4x10 black
20		Hexagon socket head cap screw	10			CS3x6 JV3-160S
21	M400159	Sub shaft stay	10			JV3-160S
22		Hexagon socket head cap screw	10			CS4x8 JV3-160S
23		Hexagon socket head cap screw	10			CS4x10 JV3-160S
24	M400158	Main shaft stay	10			JV3-160S
25		Screw	10			P4x12 SMW JV3-160S
26	M203638	Main guide shaft 160S	1			JV3-160S
27	M203639	Sub guide shaft 160S	1			JV3-160S
28		Screw	14			B3x6 black JV3-160S
29	M601077	Scale holder	7			JV3-160S

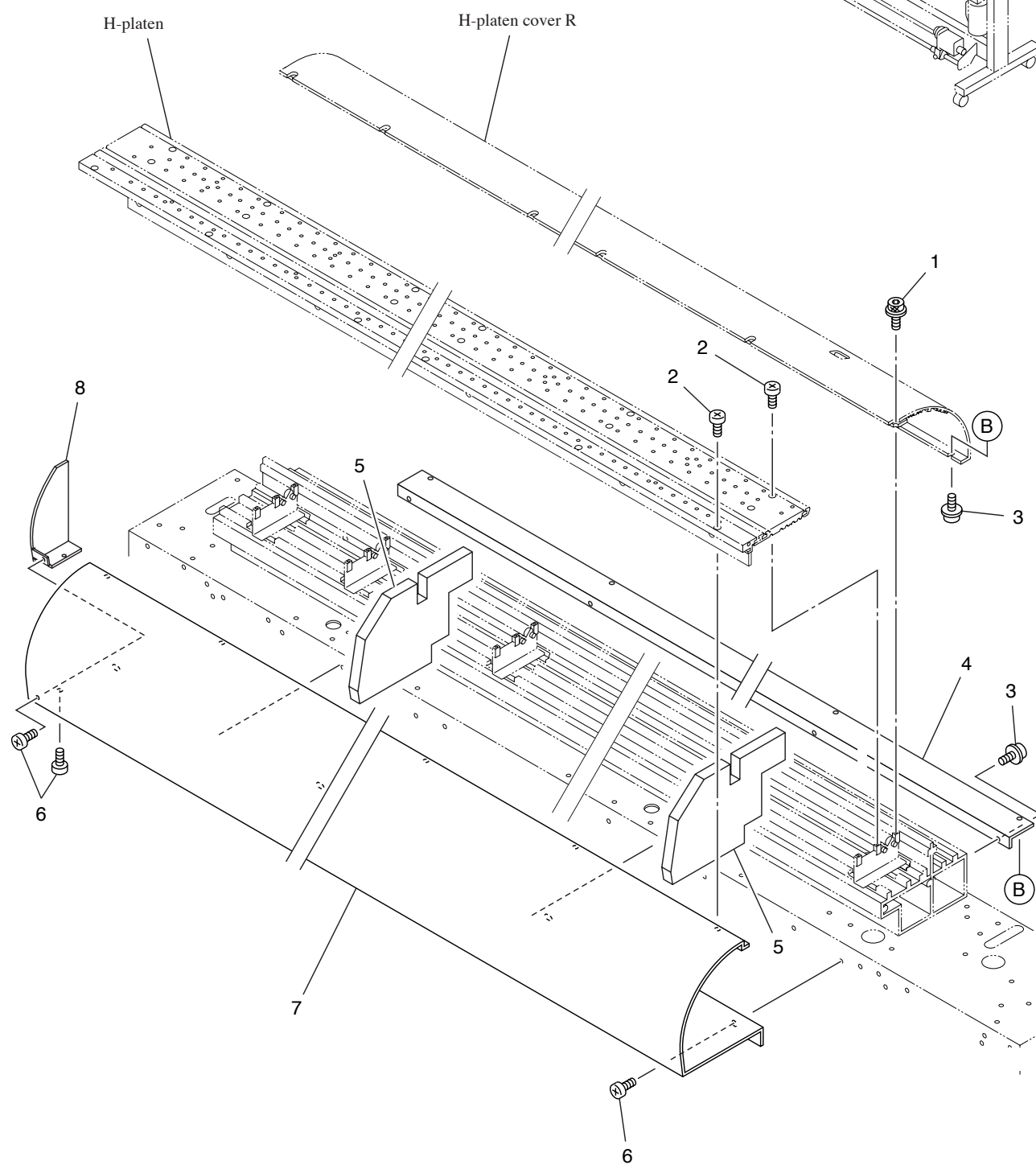
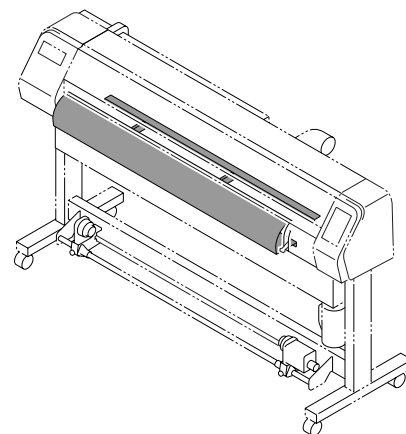
# PLATEN ASSY. - 1/2





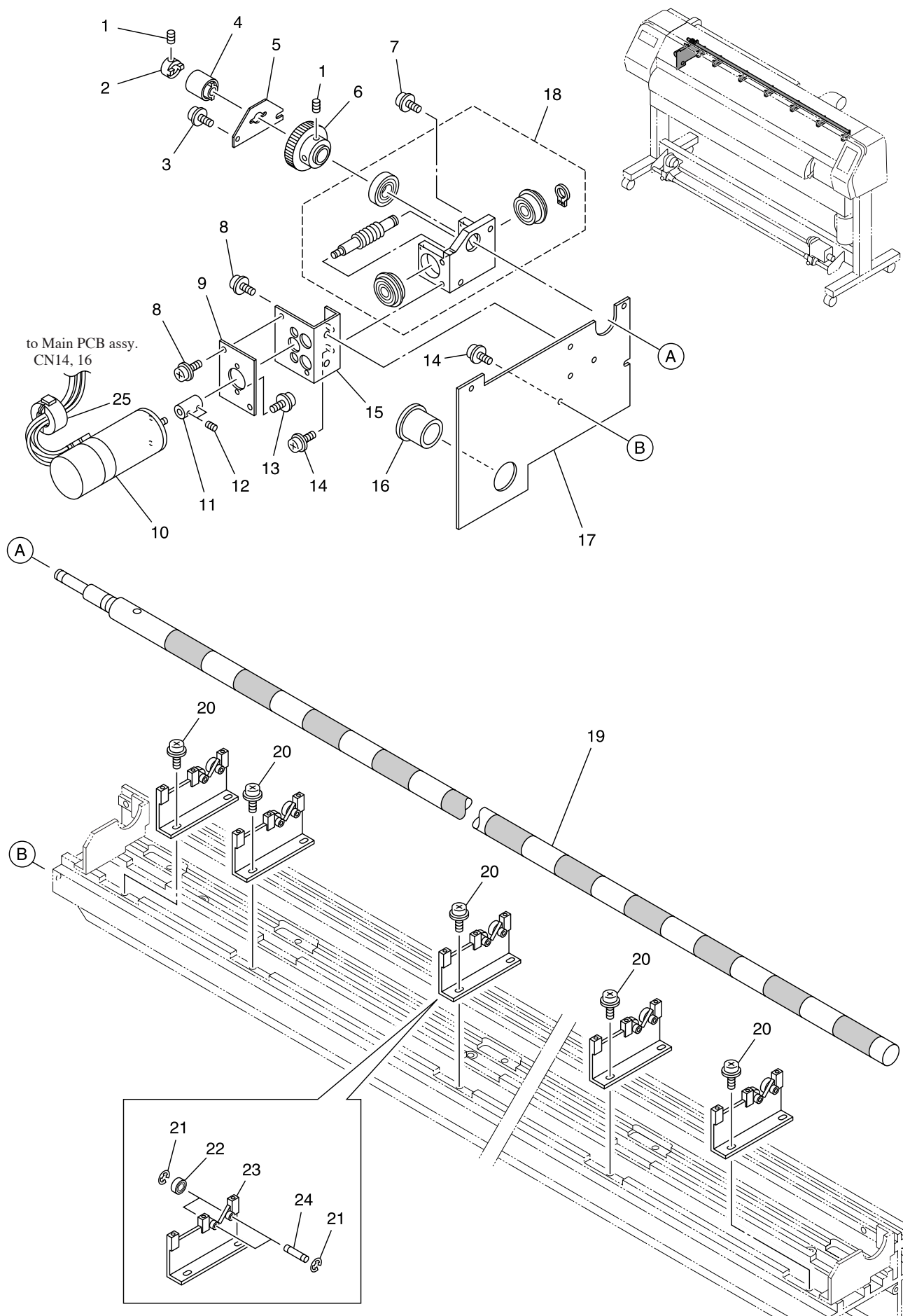


## PLATEN ASSY. - 2/2



[illegible]

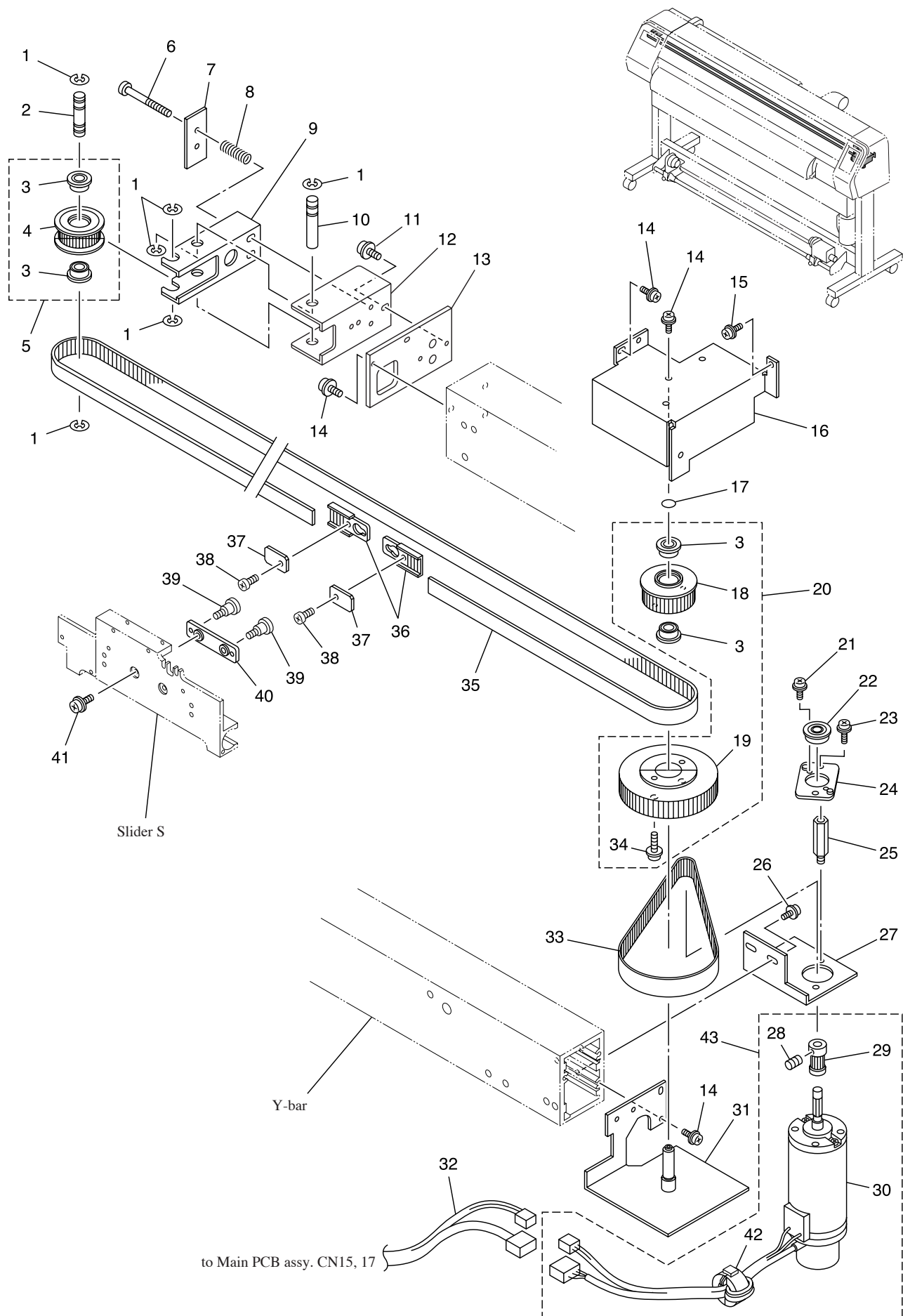
# X-DRIVE ASSY.



[illegible]

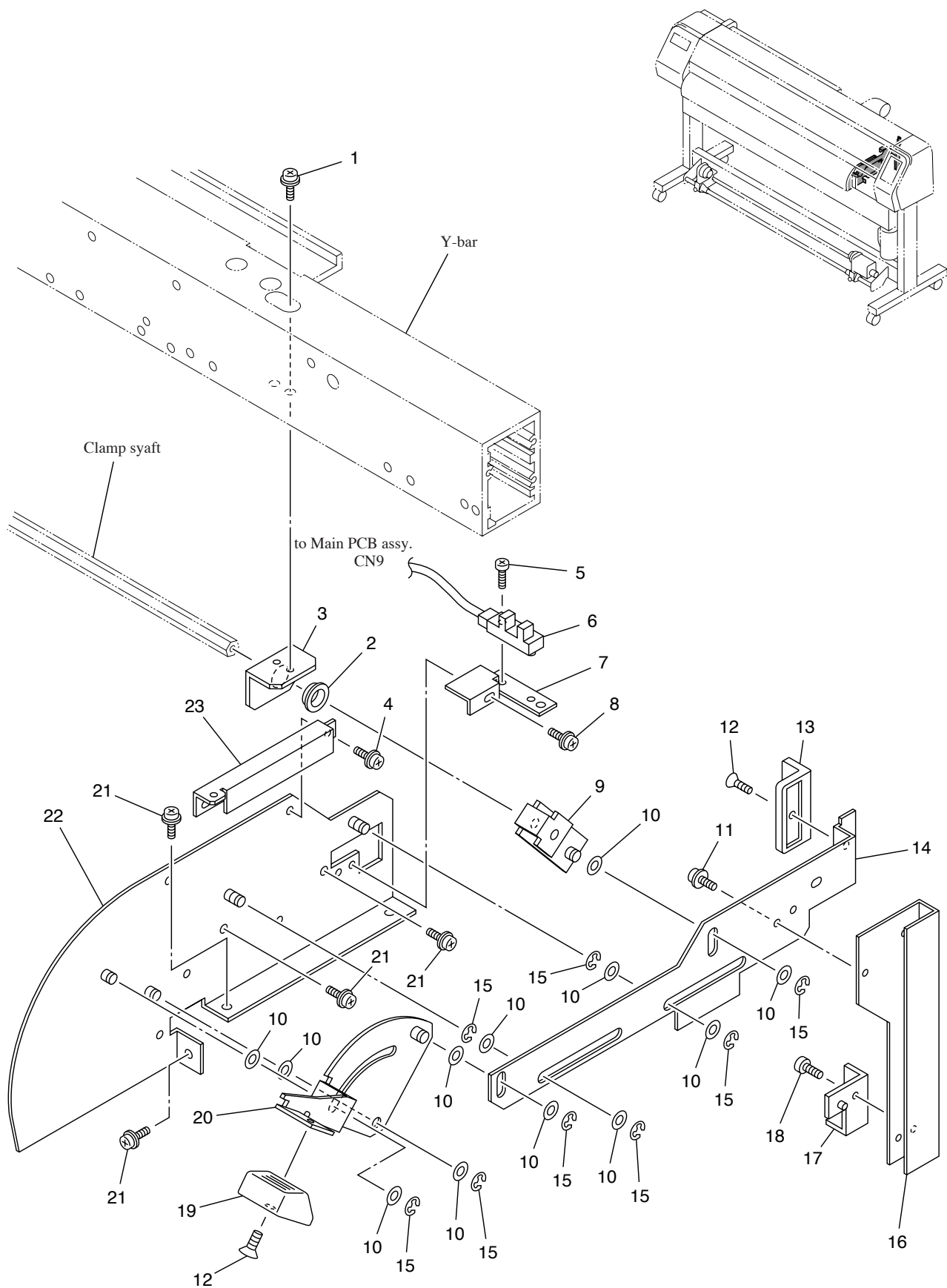
Q:Quantity used   R:Recommended part   C:Consumables   S:Selectable part   O:Option

# Y-DRIVE ASSY.



No.	Part codes	Name of part	Q	R/C	S/O	Remarks
1		E-ring	6			E-6
2	M202841	Y-T pulley shaft	1			
3		Bearing	4			689ZZ
4	M201966	Y-driven pulley	1			
5	M004368	Y-driven pulley assy.	1			
6		Screw	2			B4x60
7	M503406	Y-spring plate	1			
8	M800569	Y-spring	2			
9	M502878	Y-T pulley bracket	1			
10	M202842	Y-T fulcrum pin	1			
11		Screw	2			P4x10 SMW
12	M502877	Y-T bracket	1			
13	M503907	T-base plate	1			
14		Screw	4			P4x10 SMW
15		Screw	1			P3x6 SMW
16	M503933	D bracket US	1			
17		O-ring	1			P-9
18	M201960	Y-drive pulley	1			
19	M202822	D-pulley	1			
20	M004363	Y-drive pulley assy.	1			
21		Screw	2			P3x6 SMW
22		Bearing	1			F607ZZ
23		Screw	2			P4x10 SMW
24	M504175	YM-top plate S	1			
25	M203729	YM-spacer S	2			
26		Screw	2			P4x10 SMW
27	M504174	Y-motor bracket S	1			
28		Hexagon socket head screw	1			SSWP4x4
29	M202666	DM pulley	1			
30	E300342	Y-axis motor assy.	1			
31	M503917	D-bracket	1			
32						
	E102221	Y-axis motor junction cable 160 assy.	1			JV3-160S
33		Belt	1			150 S2M 380G
34		Screw	2			P3x14 SMW
35						
	M800629	Y-drive belt 160S	1			JV3-160S
36	M400160	Belt holder 1	2			
37	M503786	Belt support S	2			
38		Screw	2			P4x6 Round S
39	M400140	Belt screw	2			
40	M400161	Belt holder	1			
41		Screw	2			P4x12 SMW
42		Troidal ferrite clamp	1			TFC-25-15-12A
43	M005144	Y-axis motor / pulley assy.	1			

## CLAMP ASSY. - 1/2

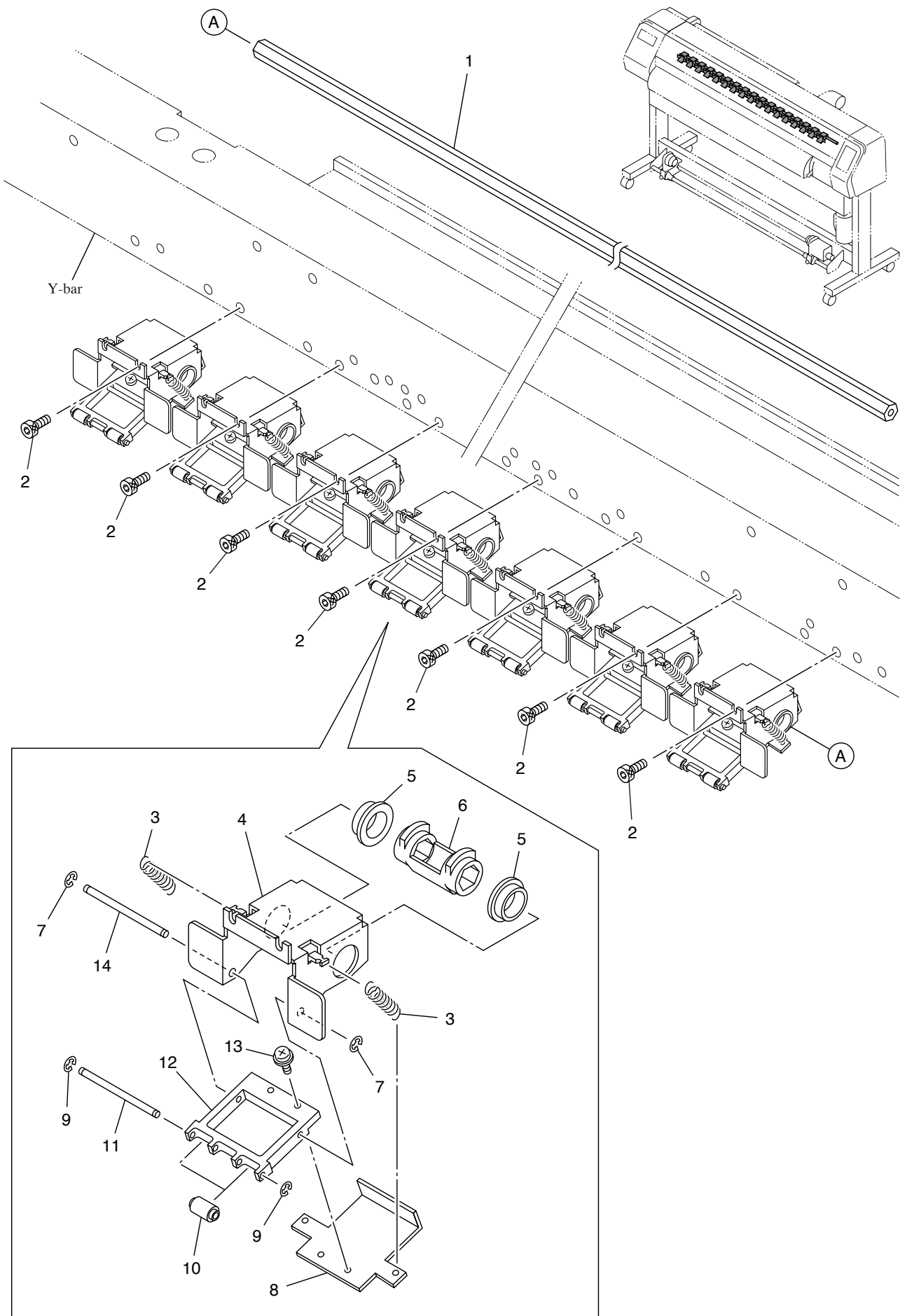




[illegible]

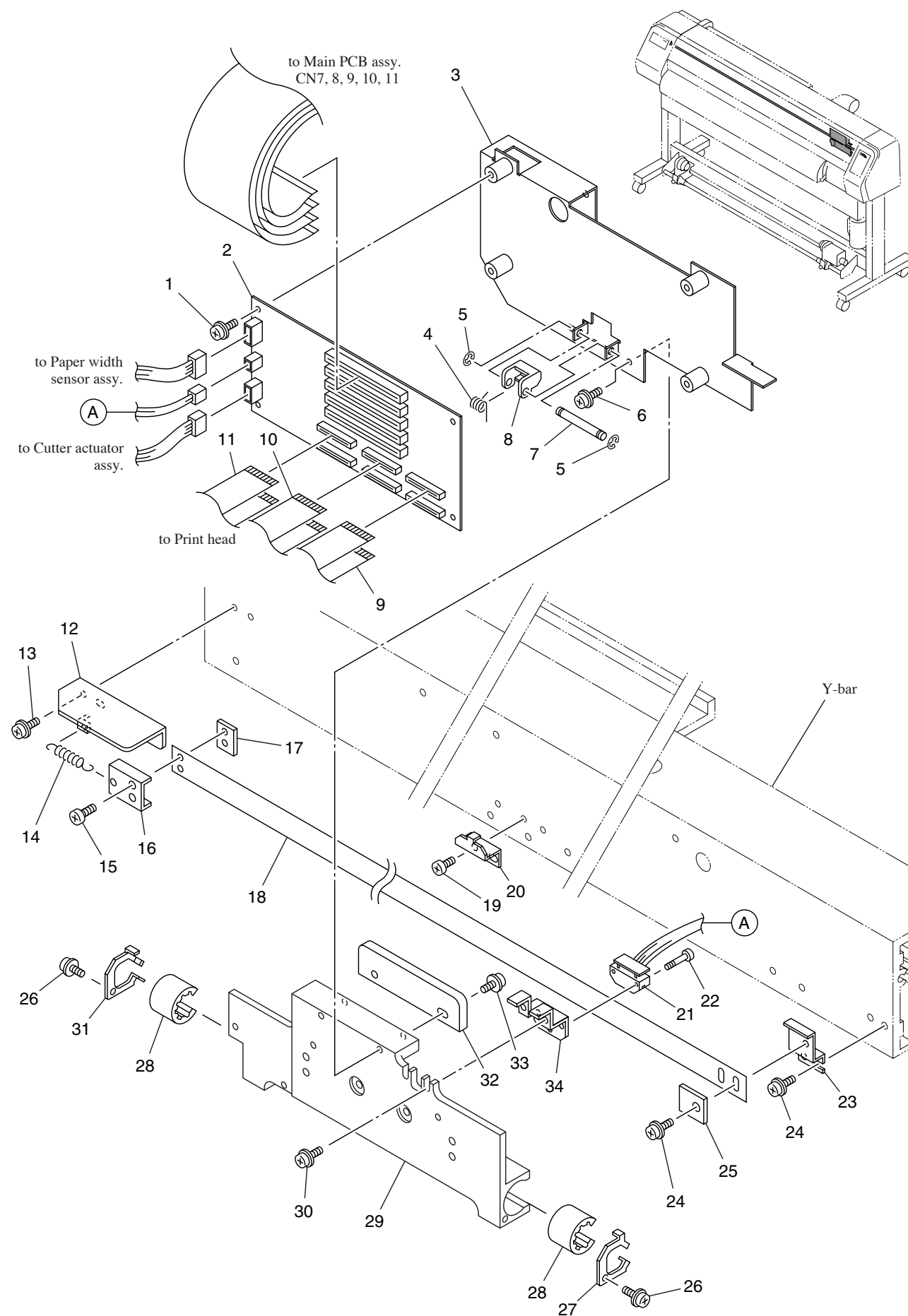
Q:Quantity used   R:Recommended part   C:Consumables   S:Selectable part   O:Option

CLAMP ASSY. - 2/2



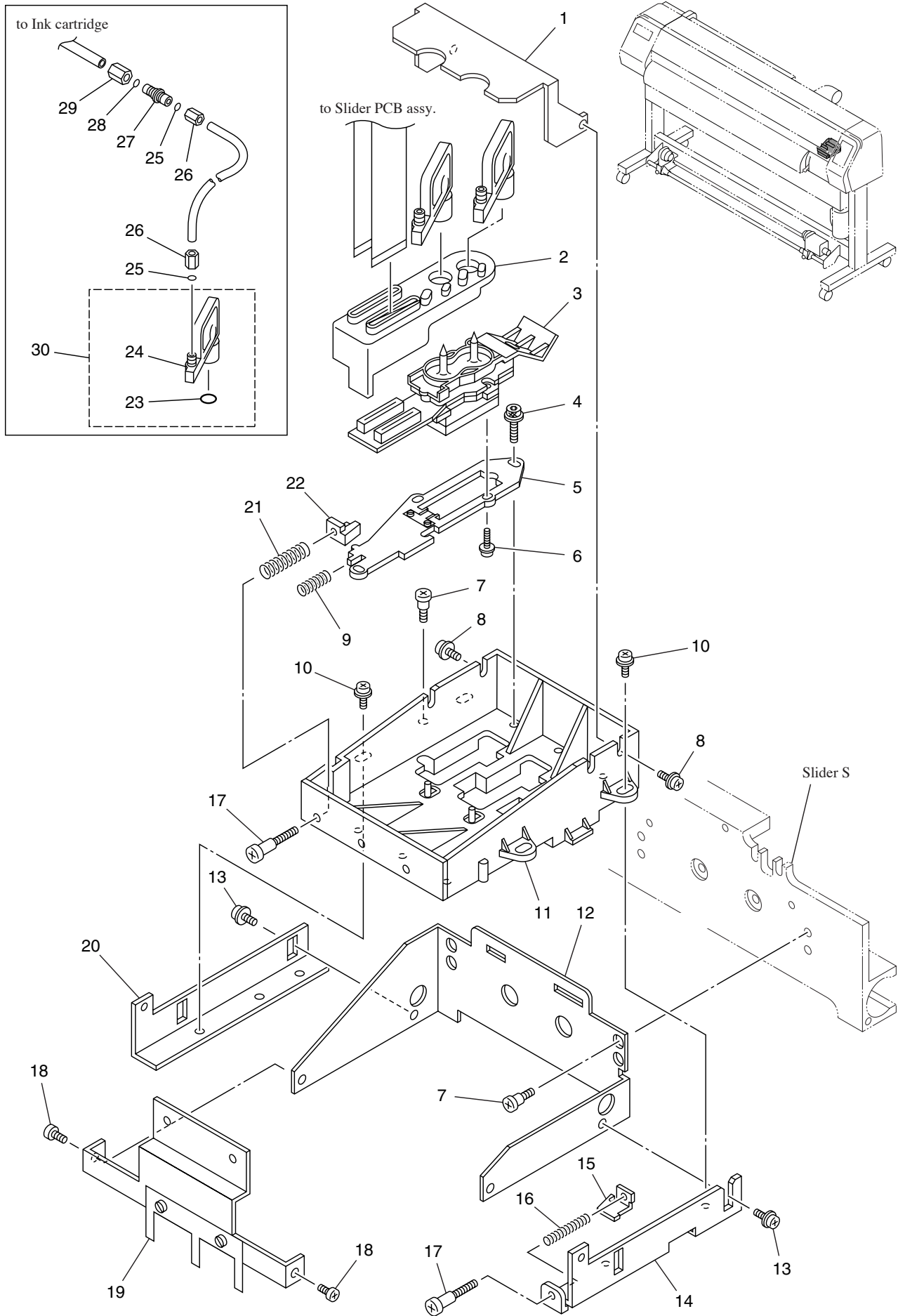


# SLIDER ASSY.



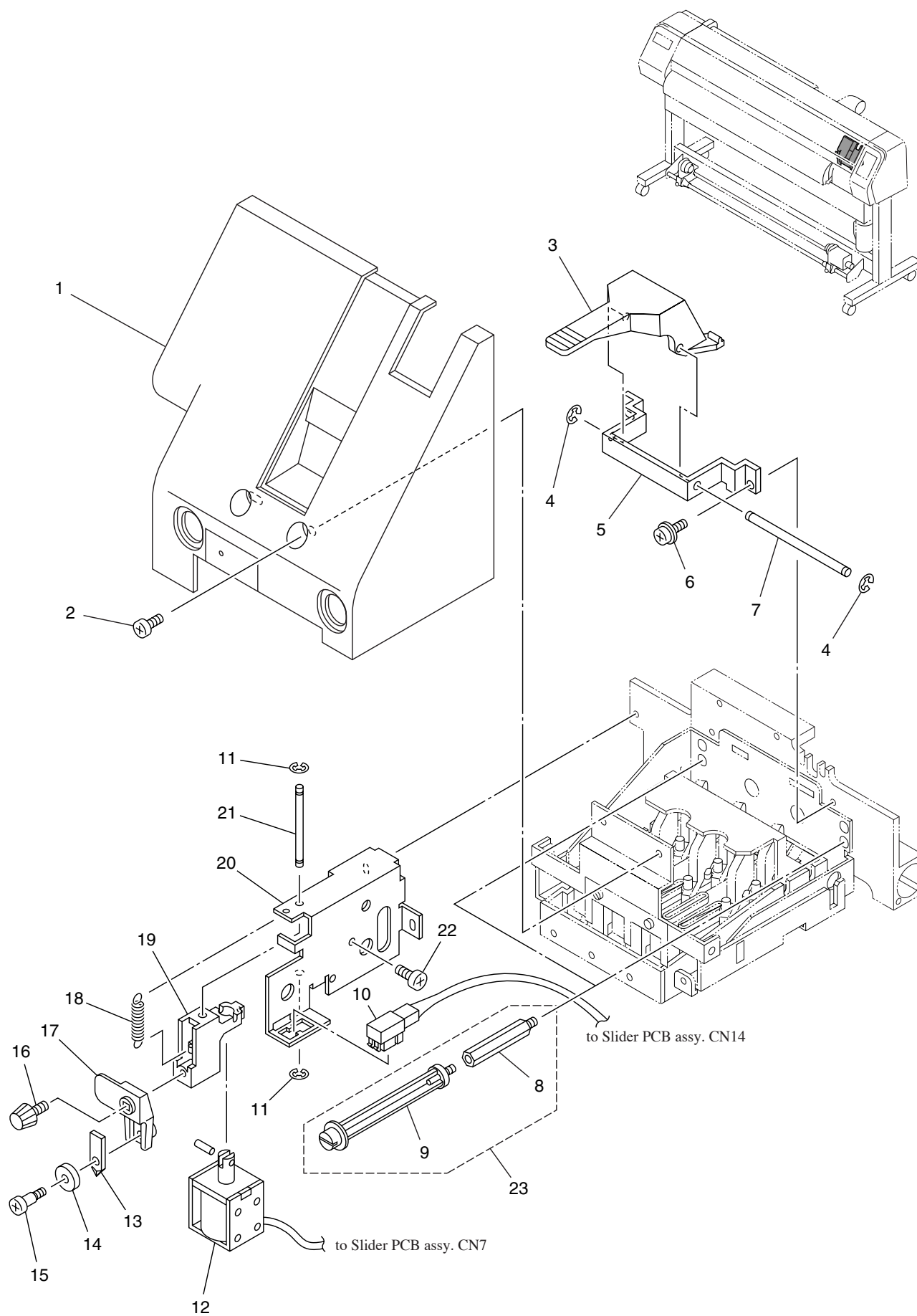
No.	Part codes	Name of part	Q	R/C	S/O	Remarks
1		Screw	4			P3x8 SMW
2	E102181	Slider PCB assy.	1			
3	M504004	Slider PCB bracket	1			
4	M800633	Slider pad spring	1			
5		E-ring	2			E-2.5
6		Screw	2			P3x8 SMW
7	M203646	Slider fulcrum shaft	1			
8	M601213	Slider pad F	1			
9	E102218	Head FPC 3 assy.	1			
10	E102217	Head FPC 2 assy.	1			
11	E102216	Head FPC 1 assy.	1			
12	M503908	Scale base L	1			
13		Screw	2			P3x6 SMW
14	M800565	Scale spring	1			
15		Screw	2			B3x6 Ni
16	M503397	Scale hook	1			
17	M503399	Scale holder L	1			
18						
	E300353	Linear encoder scale 2126	1			JV3-160S
19						
		Screw	4			B3x6 black JV3-160S
20						
	M503911	Scale stopper	4			JV3-160S
21	E102192	Linear encoder PCB assy.	1			
22		Screw	2			P2x12
23	M503910	Scale base R	1			
24		Screw	3			P3x6 SMW
25	M503398	Scale holder R	1			
26		Screw	2			P3x8 SMW
27	M501945	Bushing stopper R	1			
28	M400166	Bushing	2			
29	M203643	Slider S	1			
30		Screw	2			P3x10 SMW
31	M501946	Bushing stopper L	1			
32	M600579	Slider pad	1			
33		Screw	2			P3x8 SMW
34	M503909	Linear sensor bracket	1			

# HEAD ASSY. - 1/2





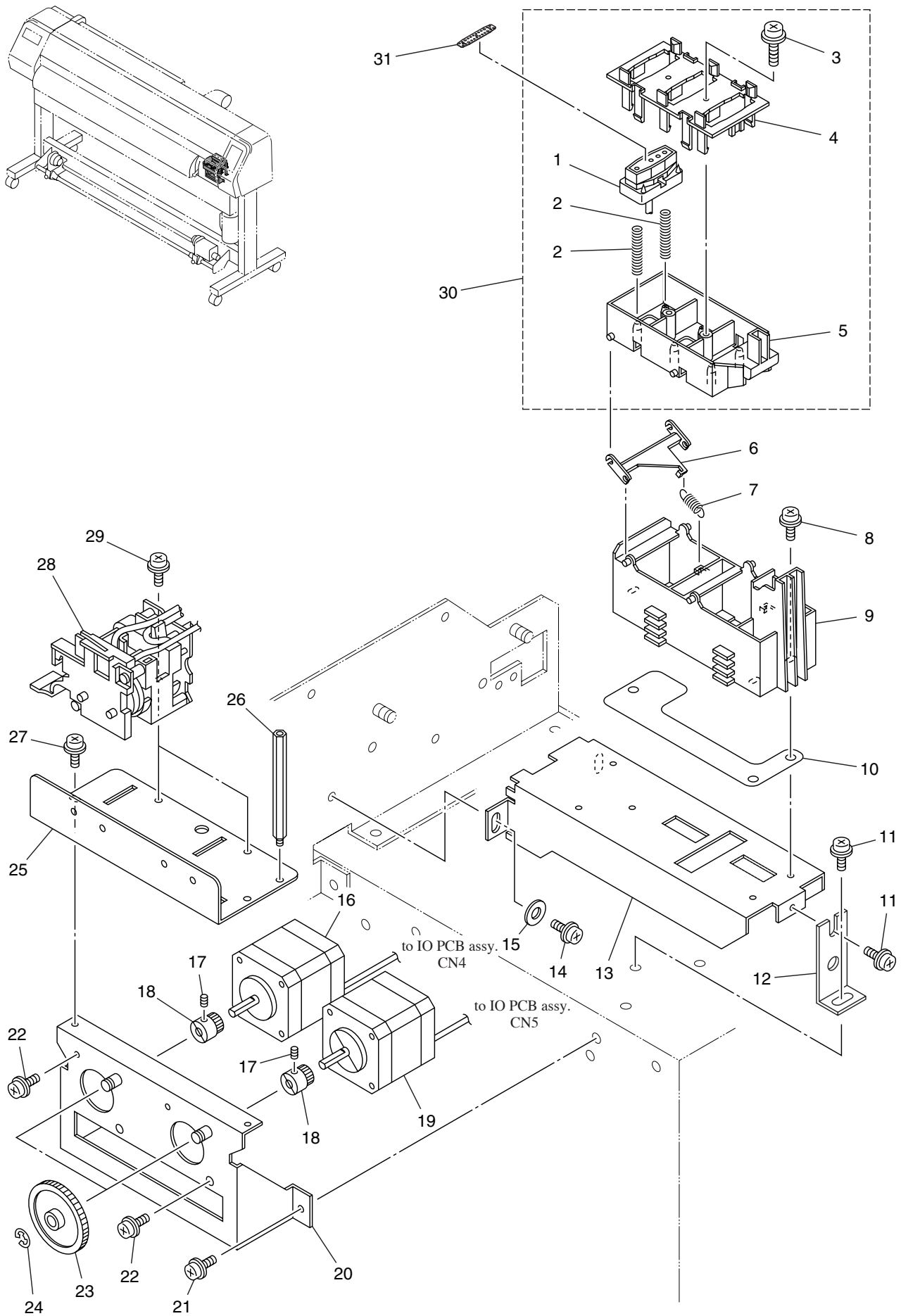
## HEAD ASSY. - 2/2





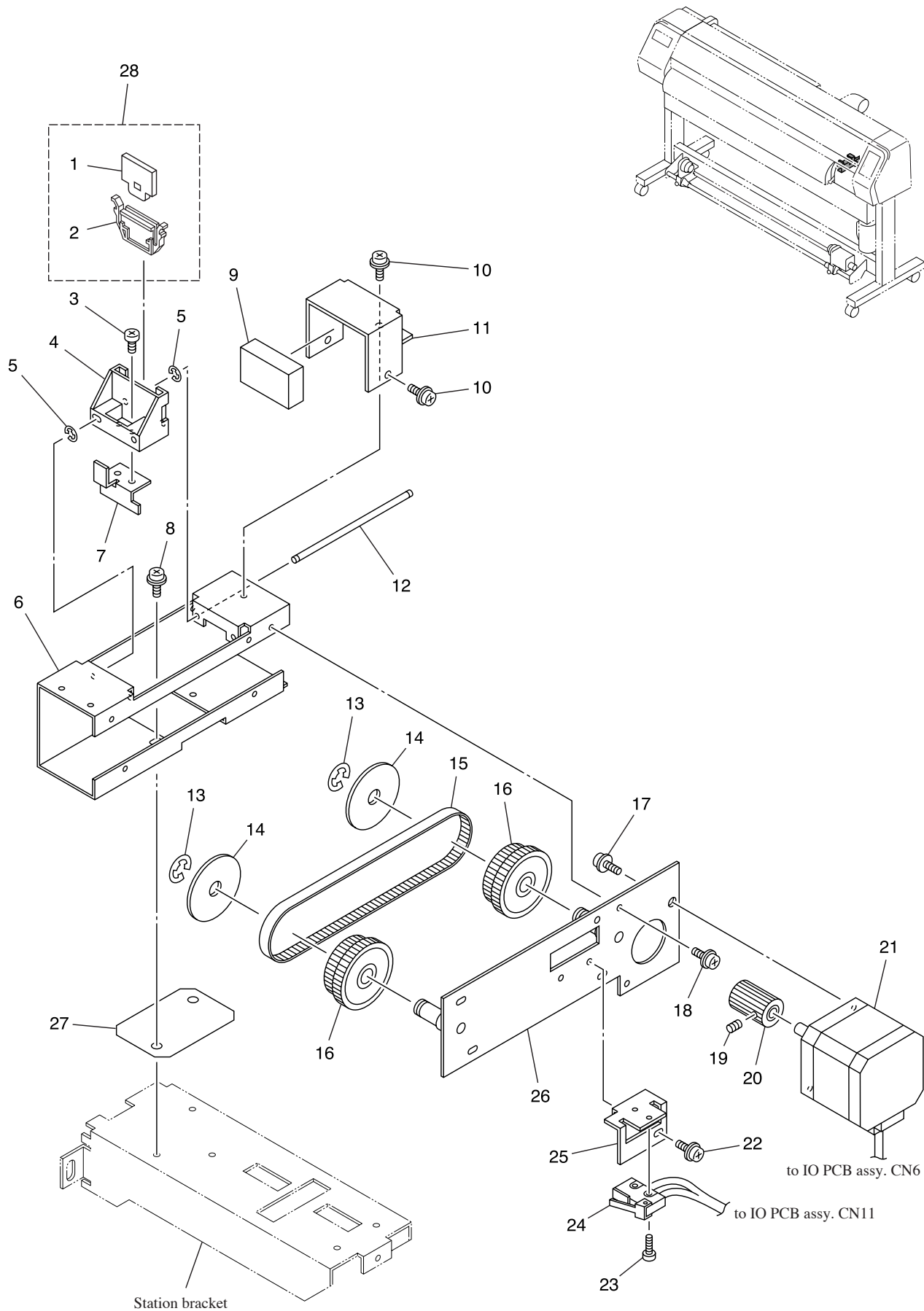
[illegible]

# STATION ASSY.





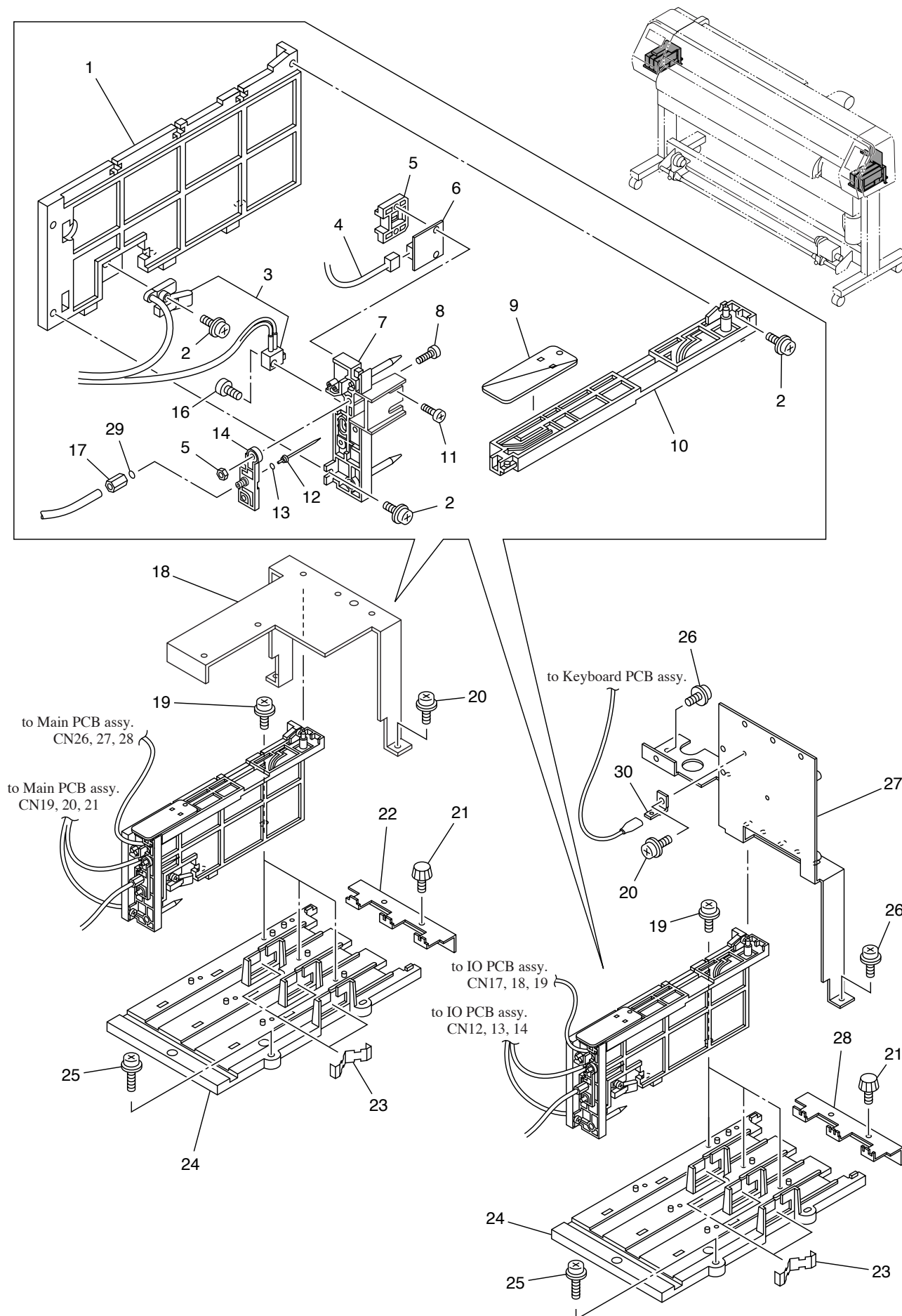
# WIPER ASSY.



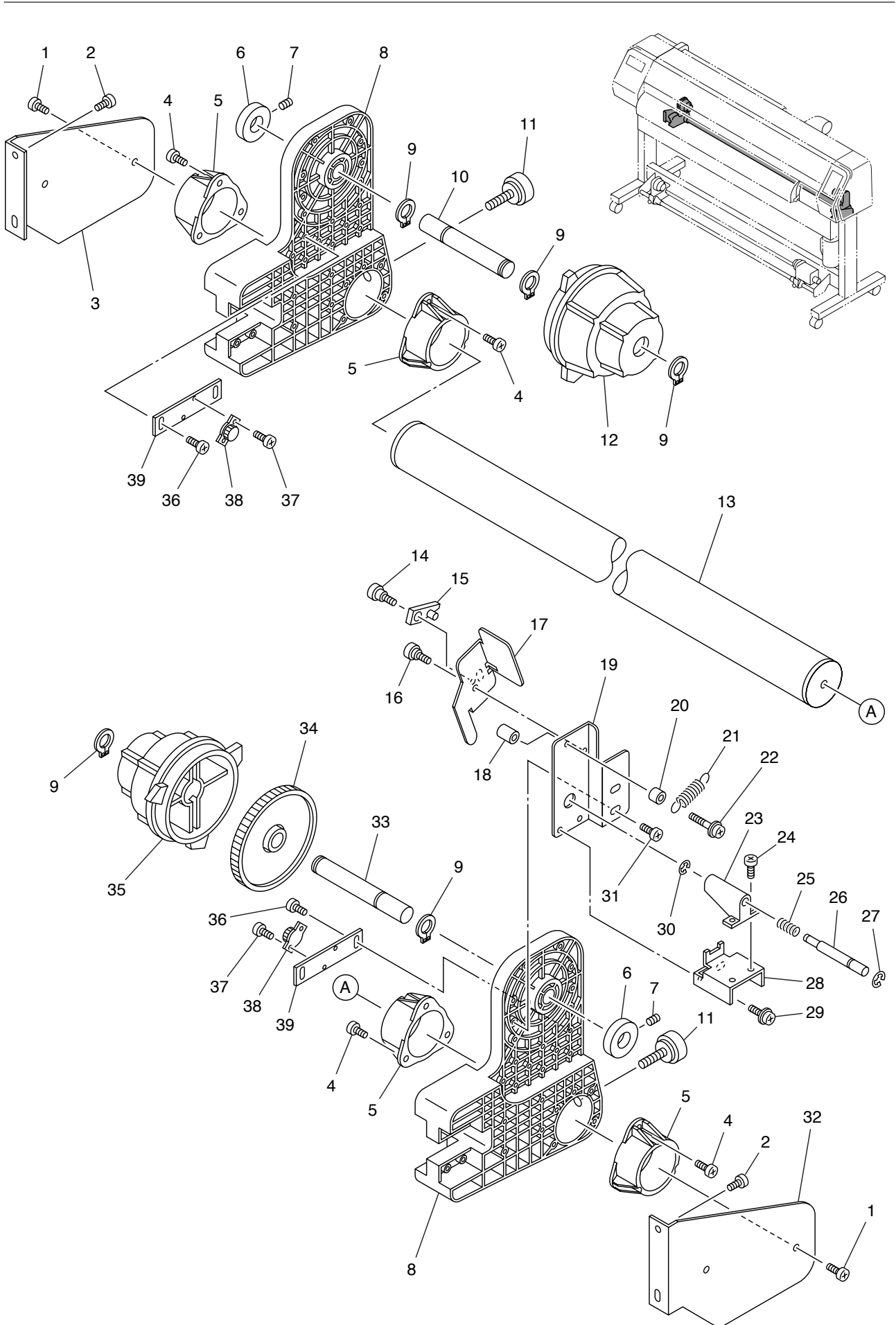
[illegible]

Q:Quantity used   R:Recommended part   C:Consumables   S:Selectable part   O:Option

# CARTRIDGE ASSY.



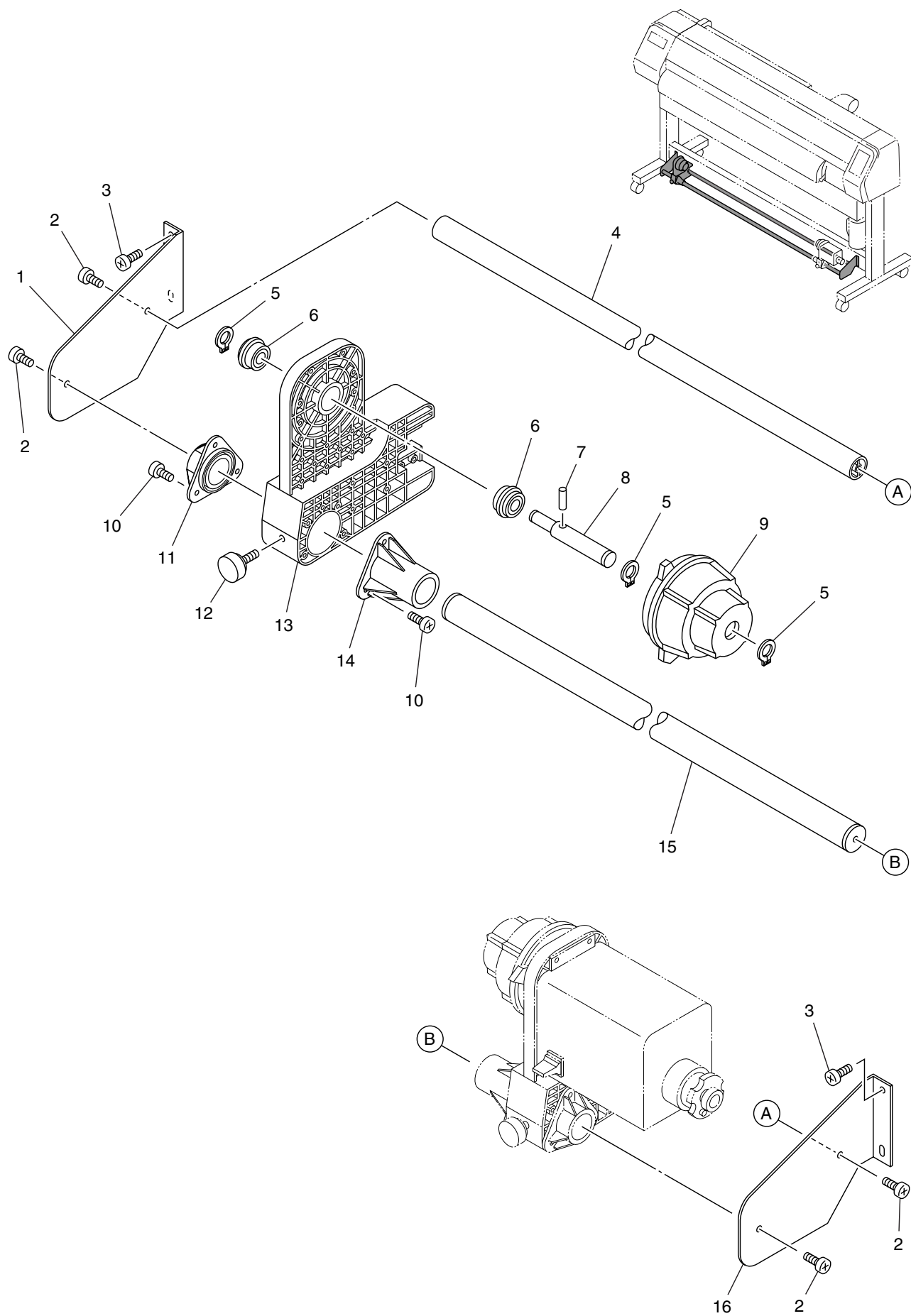






No.	Part codes	Name of part	Q	R/C	S/O	Remarks
1		Screw	2			B4x10 black
2		Screw	4			B4x10 black
3	M503990	Roll bracket L	1			
4		Screw	12			BZ4x10 black
5	M601190	Extension bushing 38	4			
6	M201607	Roll shaft collar	2			
7		Hexagon socket head screw	2			SSWP3x3
8	M601186	Roll base 2 (S)	2			
9		C-ring	5			C-14
10	M203641	Roll holder shaft L	1			
11		Face screw	2			Urea N5-M6, L=20 black
12	M600686	Roll holder G	1			
13						
	M203648	Roll guide shaft 160S	1			JV3-160S
14	M400140	Belt screw	1			
15	M601087	Roll stopper A	1			
16	M400233	Bear holder screw	1			
17	M503927	Roll stopper B	1			
18		Nut	1			M4, B-832
19	M503928	Roll stopper base	1			
20		Bushing	1			φ4, L=8
21	M800604	Roll stopper spring 2	1			
22		Screw	1			P4x25 SMW
23	M601050	Pin guide	1			
24		Screw	2			B3x6 black
25	M800564	Pin spring	1			
26	M203314	Height adjusting pin	1			
27		E-ring	1			E-4
28	M503929	Roll lock bracket	1			
29		Screw	2			P3x6 SMW
30		E-ring	1			E-3
31		Screw	2			BZ4x10 black
32	M503989	Roll bracket R	1			
33	M203640	Roll holder shaft R	1			
34	M601168	Roll holder gear	1			
35	M600500	Roll holder	1			
36		Screw	2			BZ4x10 black
37		Screw	2			B2x6 black
38		Rotary damper	2			FRT-G2-200G2
39	M503930	Roll damper bracket	2			

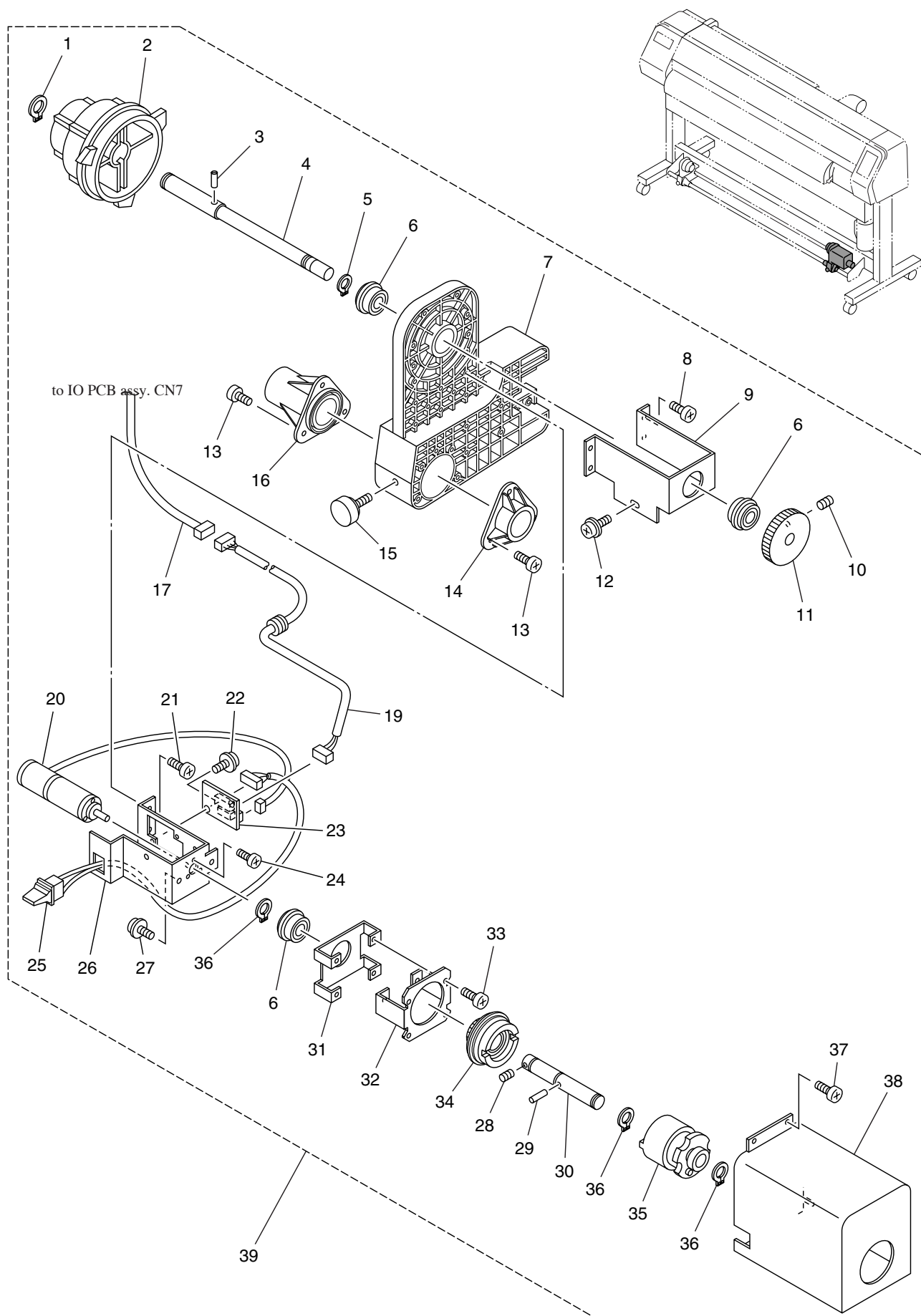
## TAKE-UP DEVICE ASSY. - 1/2



[illegible]

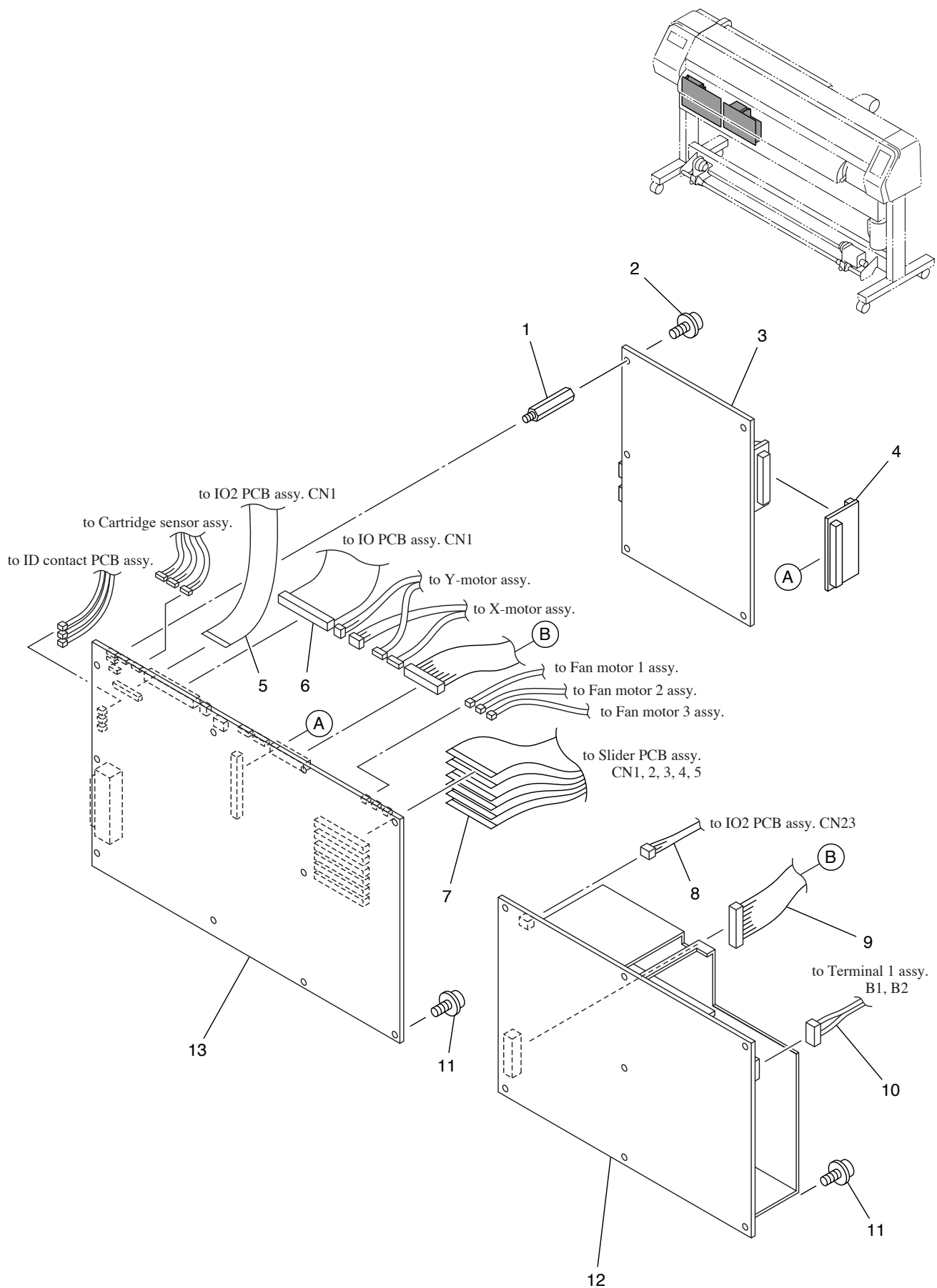
Q:Quantity used   R:Recommended part   C:Consumables   S:Selectable part   O:Option

## TAKE-UP DEVICE ASSY. - 2/2



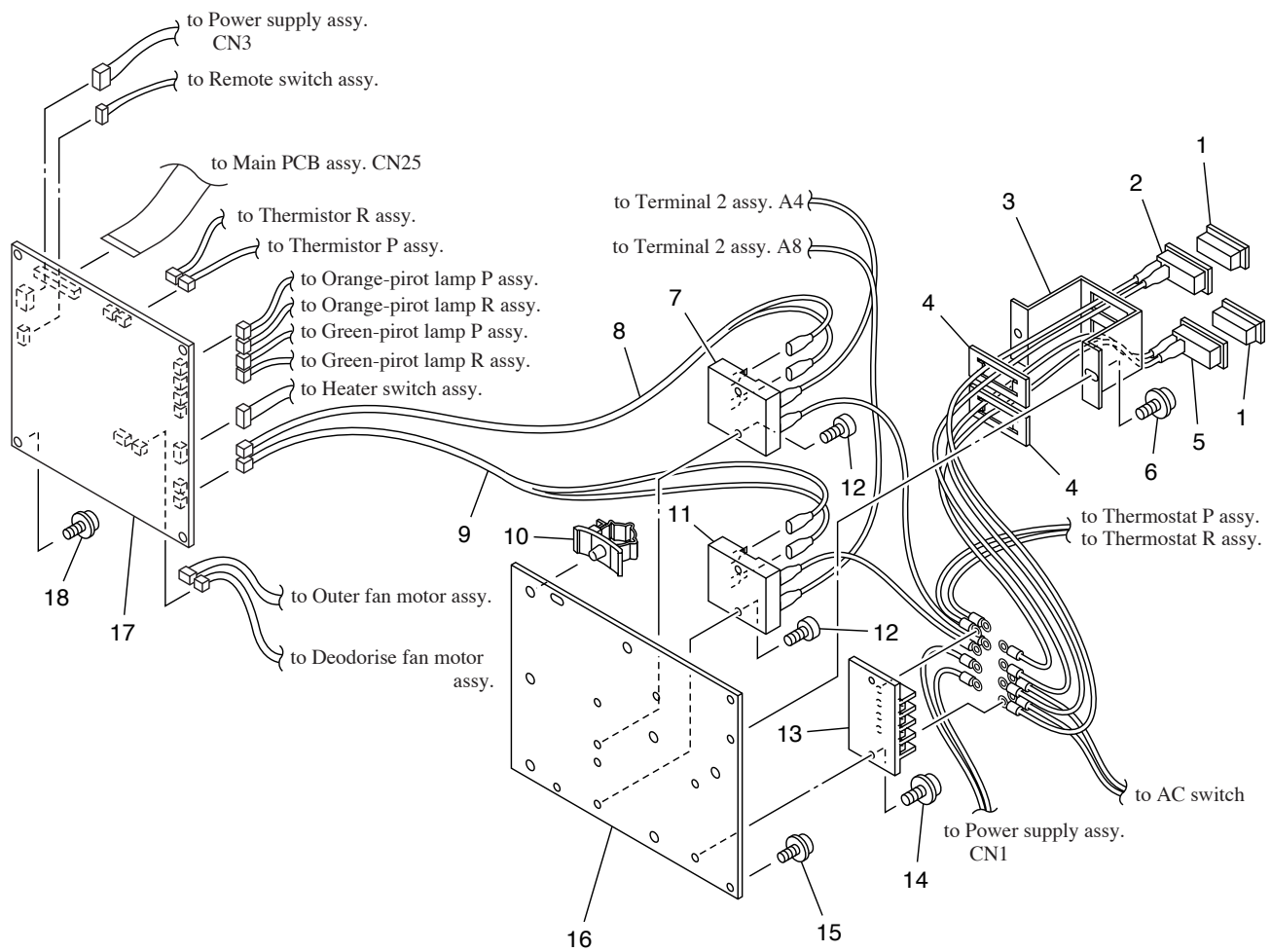
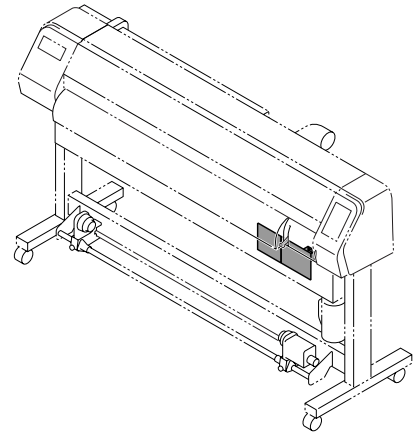
No.	Part codes	Name of part	Q	R/C	S/O	Remarks
1		C-ring	1			C-14
2	M600500	Roll holder	1			
3		Spring pin	1			φ3x20
4	M203685	TL shaft (S)	1			
5		C-ring	1			C-12
6		Bearing	3			6901ZZNR
7	M601185	Roll base 2 (BR)	1			
8		Screw	4			BZ4x10
9	M504102	TL bracket (S)	1			
10		Hexagon socket head screw	1			SSWP4x6
11	M203683	TL gear (S)	1			
12		Screw	1			P4x8 SMW
13		Screw	6			BZ4x10 black
14	M601188	Extension bushing 25	1			
15		Face screw	1			Urea N5-M6, L=20
16	M601187	Extension long bushing 25	1			
17	E102198	Take-up motor junction cable assy.	1			
18		Not used.				
19	E102129	Take-up motor cable assy.	1			
20	E101604	Take-up motor assy.	1			
21		Screw	2			BZ4x10
22		Screw	2			P3x6 SMW
23	E101185	Take-up motor PCB assy.	1			
24		Screw	3			B2.5x5
25	E101209	Take-up motor switch assy.	1			
26	M504101	Take-up motor bracket (S)	1			
27		Screw	2			P4x8 SMW
28		Hexagon socket head screw	1			SSWP3x6
29		Pin	1			φ3x20
30	M203686	M-gear shaft (S)	1			
31	M504104	M-gear bracket base (S)	1			
32	M504103	M-gear bracket (S)	1			
33		Screw	4			B3x6
34	M203684	M-gear (S)	1			
35		Mini keeper	1			MK-12
36		C-ring	3			C-12
37		Screw	3			BZ4x10
38	M504105	Wind-up cover (S)	1			
39	M004921	Take-up (S) assy.	1			

# ELECTRICAL UNIT ASSY. - 1/3





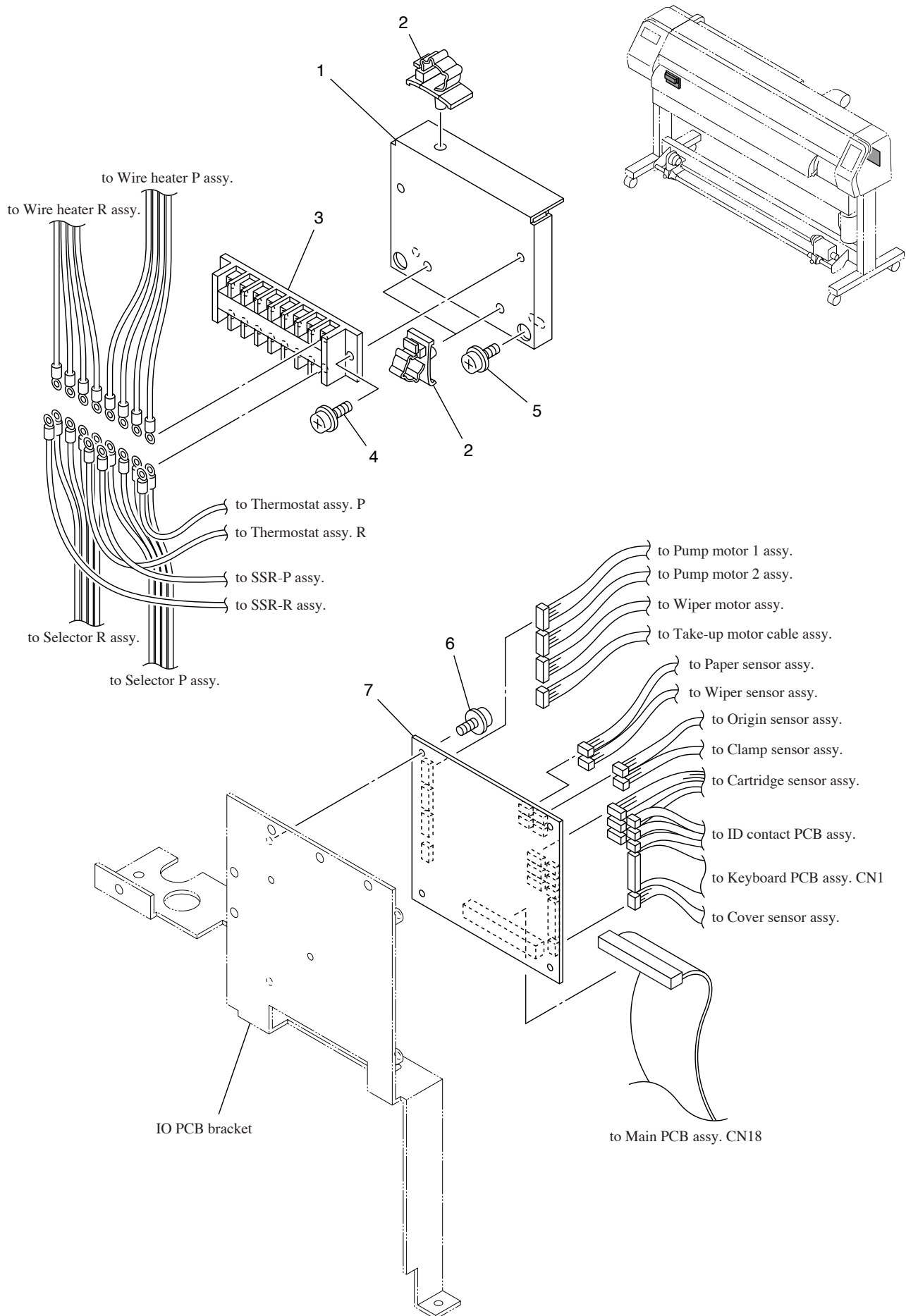
## ELECTRICAL UNIT ASSY. - 2/3





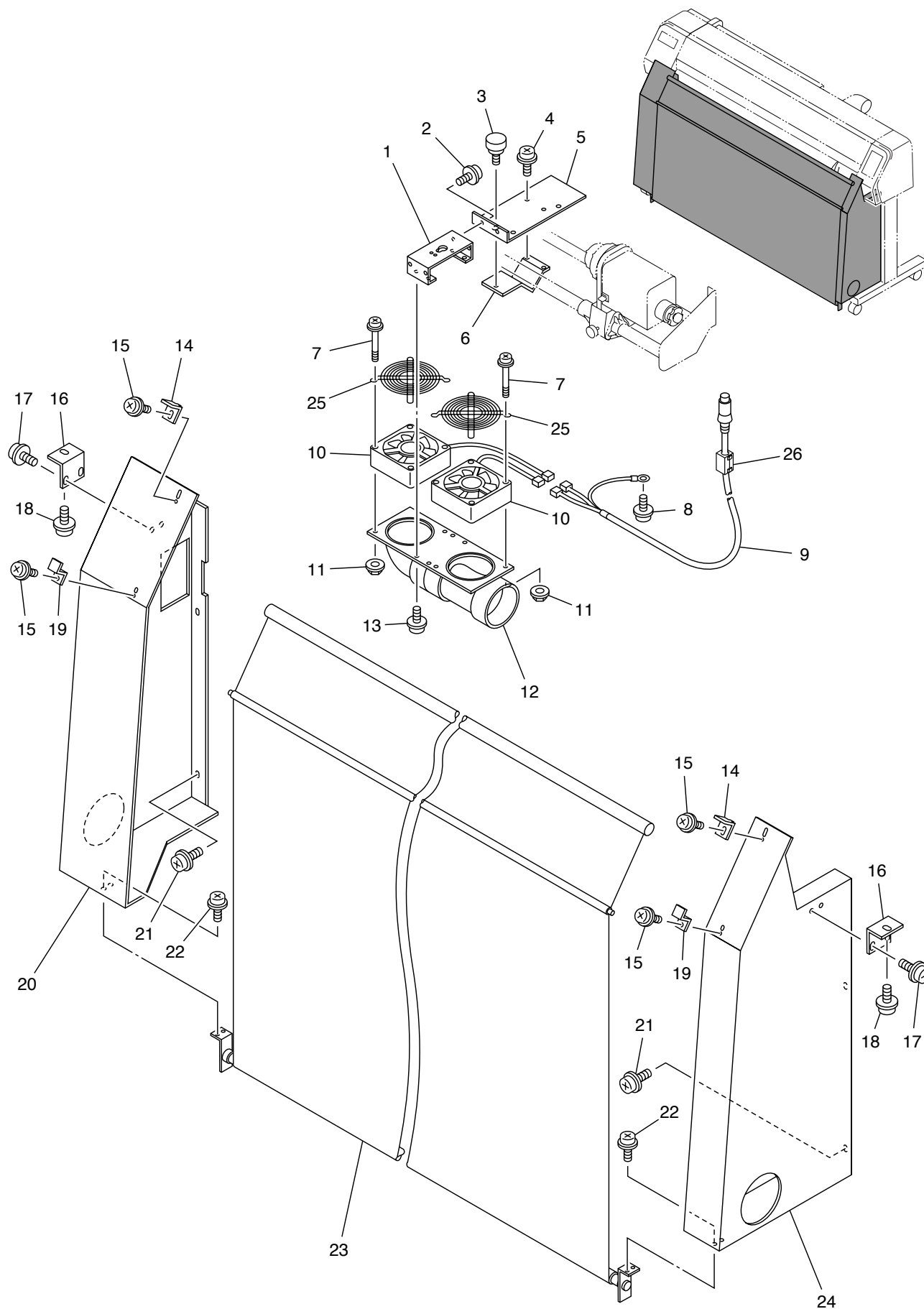


## ELECTRICAL UNIT ASSY. - 3/3





## FRONT EXHAUST DEVICE ASSY.







D500198-1.10-28122002

© 2002 MIMAKI ENGINEERING CO., LTD.