

by printer and then by order; you can only change the job order for each printer. If you are using BestFit or Conserve Media, RIP-Queue ignores the job order.

## ***Sending a Job to Preflight***

To send a job to Preflight, highlight the job and click **Preflight** on the main toolbar, or click **Preflight** in the Job Information area of your screen. When a job is in Preflight, its status will display as Busy. It cannot be modified, processed, or printed until it is submitted from Preflight.

## ***Reprinting a Job***

### **→ To reprint a job:**

1. Highlight the **job** in the Buffered Jobs Area of your screen.
2. Drag the job into the Jobs Ready to Print area, or right-click the job, and choose **Process/Print**.
3. When asked if you want to reprocess the job, click **No** unless you have modified the printer or job options.

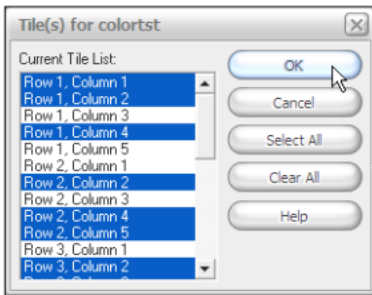


Figure 11—Tiles

## ***Selecting Tiles to Print***

### **→ To select which tiles you want to print:**

1. Right-click the job to open the right-click menu.
2. Choose **Edit > Tiles**. This opens the Tile for... dialog.
3. Highlight the tiles you want to print (see Figure 11).
4. Click **OK**.

## ***Changing the Printer Settings for a Job***

### **→ To change the printer settings for a job:**

1. Right-click the job to open the right-click menu.
2. Choose **Edit > Printer Settings**. This opens the Printer Settings dialog (see Figure 12).
3. Modify the **Printer Settings** you want to change.
4. Click **OK**.

Changing the printer settings can affect the color quality of the job.

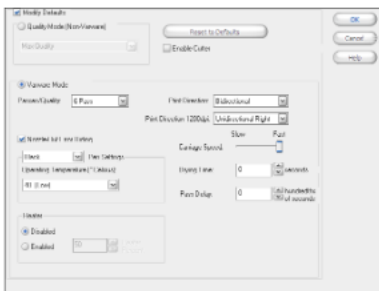


Figure 12—Printer Settings

## ***Copying a Job to a Different Printer***

### **→ To copy a job to a different printer:**

1. Right-click the job to open the right-click menu.
2. Select **Copy to...** This opens the Copy to... dialog (see Figure