

# Double-Sided Printing with the HP Latex 360

The HP Latex 360 provides features that the ONYX RIP can use to do double-sided printing. The ONYX software supports automated and manual double-sided printing. This document explains how to setup the ONYX software for double-sided printing.

## Configuring the RIP for Double-Sided Printing

In the ONYX RIP software, the printer must be configured before double-sided printing can be used. The options chosen can be configured for automatic and manual double-sided printing. They can be set globally in the mode of a media profile or by a Quick Set. Changing the settings within a mode will affect all jobs that use the modified mode. Using a Quick Set, applies to jobs that are opened using that Quick Set. The mode is not changed. This makes it possible for single-sided jobs to use the same media and mode.

Start by going to *Configure Printer*. Select the *Media* tab and highlight the media profile that will be used for double-sided printing. Click on the button, *Mode Options*. In the new window highlight the mode and click *Options*.

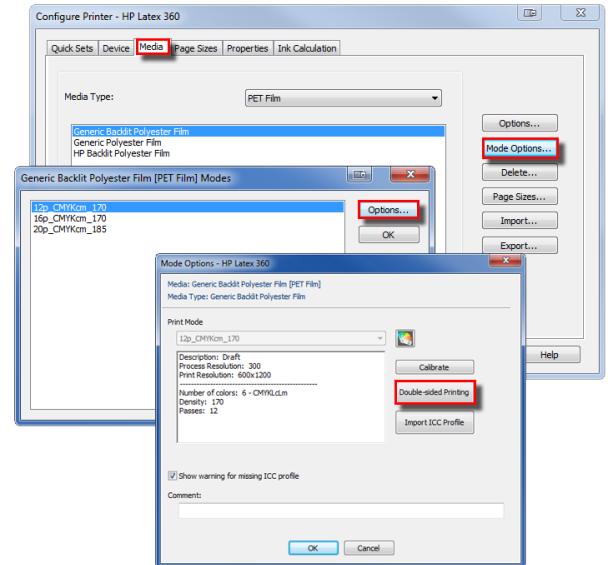


Figure 1: Double-sided printing under Mode Options.

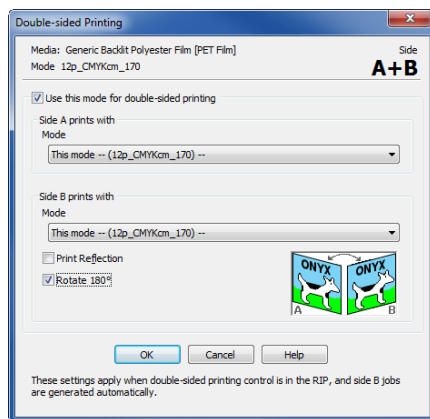


Figure 2: Double-Sided printing interface

In the Mode Options window, click on the button, *Double-sided Printing*. In the Double-sided Printing window enable *Use this mode for double-sided printing*. By default Side B is set to *Rotate 180 degrees*. Toggle the options for *Print Reflection* and *Rotate 180 degrees* as needed. As each option is toggled, the picture in the lower right updates to indicate how the two sides will look, relative to each other.

ONYX provides the ability to print each side with a different mode. At least one side must print with the mode selected in the previous window. This can be either Side A or Side B. The required mode will be indicated by the prefix, *This mode*. After configuring the double-sided printing options, Click *OK*.

Directly modifying the mode is a global setting. All jobs that use the modified mode will have a Side B copy created.

If the desired mode will not always be used for double-sided printing a Quick Set is needed. Start by going opening *Configure Printer*. Under the *Quick Set* tab, click *New*. Enter a name for the Quick Set that identifies its purpose.

In the Edit Quick Set window, disable the option, *Get Media and Page Size From Printer*. Choose the *Media Group*, *Media Name* and *Print Mode*. Lastly, click on the *Print Options* button above.

The Print Options window lists the options for double-sided printing.

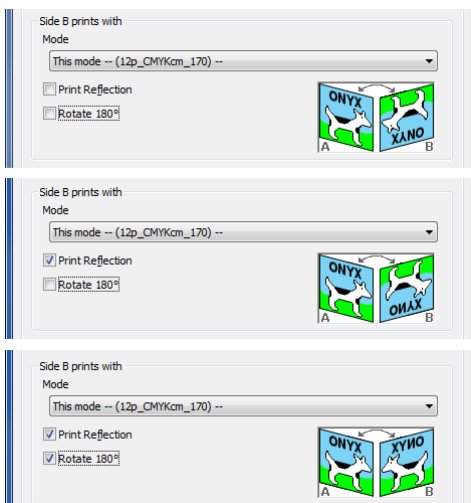


Figure 3: Different output possibilities for Side B

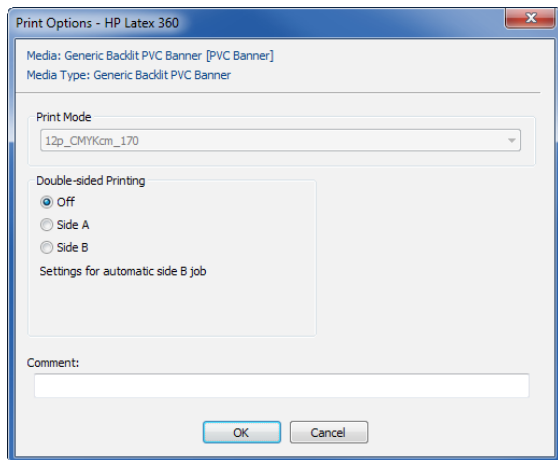


Figure 4: Using a Quick Set for double-sided printing

the upper right.

A new window appears showing ink levels and the printer's status. Go to the *Jobs* tab and under Double-sided Printing click on *Settings*. By default the needed values for *Control* and *Side B* are set to *Use job settings from RIP*, and *automatically create and print side B jobs*. The default values should be set for automatic double-sided printing to work.

After configuring the ONYX software, load a job using the custom Quick Set or modified mode. At the beginning of printing of the first side, a second job with the end of @B is appears in RIP-Queue. The Side B job will rip and then change to a hold status. The print operator must reload the media back in for Side B to print. When it is loaded the printer is ready for Side B.

The job is taken off hold and a popup message appears asking if the media has been reloaded for Side B. The user can click *OK* or wait for the countdown timer to start printing Side B.

## Manual Double-Sided Printing

Manual double-sided printing is used when Side B will have different images than Side A. The user will need to keep track of the job order so it can be reversed for Side B. All settings for rotating and reflecting the print will need to be done within the Quick Set.

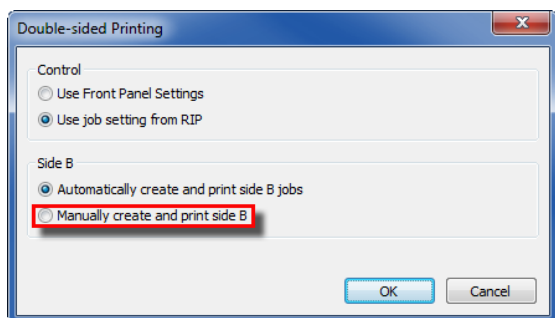


Figure 6: Job Settings - Manually create and print Side B

In the section, Double-sided Printing, select the option *Side A*. When Side A is chosen, the options for Side B creation appear. Enable the options for *Print Reflection* and *Rotate 180 degrees* as needed. Click *OK* to continue.

The option *Side B* is used for manual double-sided printing. This will be explained later in this document.

Using the Quick Set for double-sided printing does not allow the user to specify a mode for each side. In this condition both Side A and Side B will use the same mode.

Using either automatic workflow, listed above, is used, there is one option that must be Verified. In RIP-Queue, highlight the HP Latex 360 printer and click the information bubble in

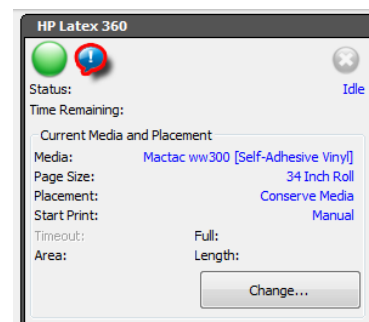


Figure 5: Information button to access Job Settings

Set the Job Settings to *Manually create and print side B*. This is located by clicking on the printer information bubble. Click on the *Jobs* tab and click *Double-sided Printing*. After making the change, click *OK*.

Next create two Quick Sets. The first Quick Set will be for Side A and the second for Side B. In Side A's Quick Set, click on *Print Options*. Choose *Side A* under the Double-sided Printing section and then click *OK*. For Side B, go to *Print Options* and select *Side B*. The options for *Print Reflection* and *Rotate 180 degrees* are not available when *Side B* is chosen. They must be

set in the main Quick Set settings. Click *OK*. In the main Quick Set window enable *Print Reflection at Print Time* and *180 rotation* as needed. Click *OK* when finished.

Load the jobs for Side A using the Side A Quick Set. The marks will print with the image's. Load the jobs for Side B using the Side B Quick Set. Make sure the print out is loaded into the printer correctly before printing Side B. Unless specified in the Quick Set, jobs for Side B will not be put on hold.

For manual double-sided printing, Side B will not have the @B designation. When the jobs are sent the printer will know it is Side B.

## **Tips and Tricks**

All double-sided jobs must not use any ONYX generated cut, registration or crop, marks. Using any of these prevents both sides of the print from aligning correctly.

Bidirectional communication is critical for the HP Latex 360. Sometimes security software, or network policies will block this communication. The needed ports used for bidirectional communication are 80, 8085 and 8090. Port 9100 is needed for printing. Make sure these ports are open.

Help documentation for double-sided printing can be found in RIP-Queue by selecting the *Help* menu, choose *Active Printer Help* and click on *HP Latex 360*. Additional information and videos about using the HP Latex 360 and the ONYX software is found at [www.onyxgfx.com](http://www.onyxgfx.com).