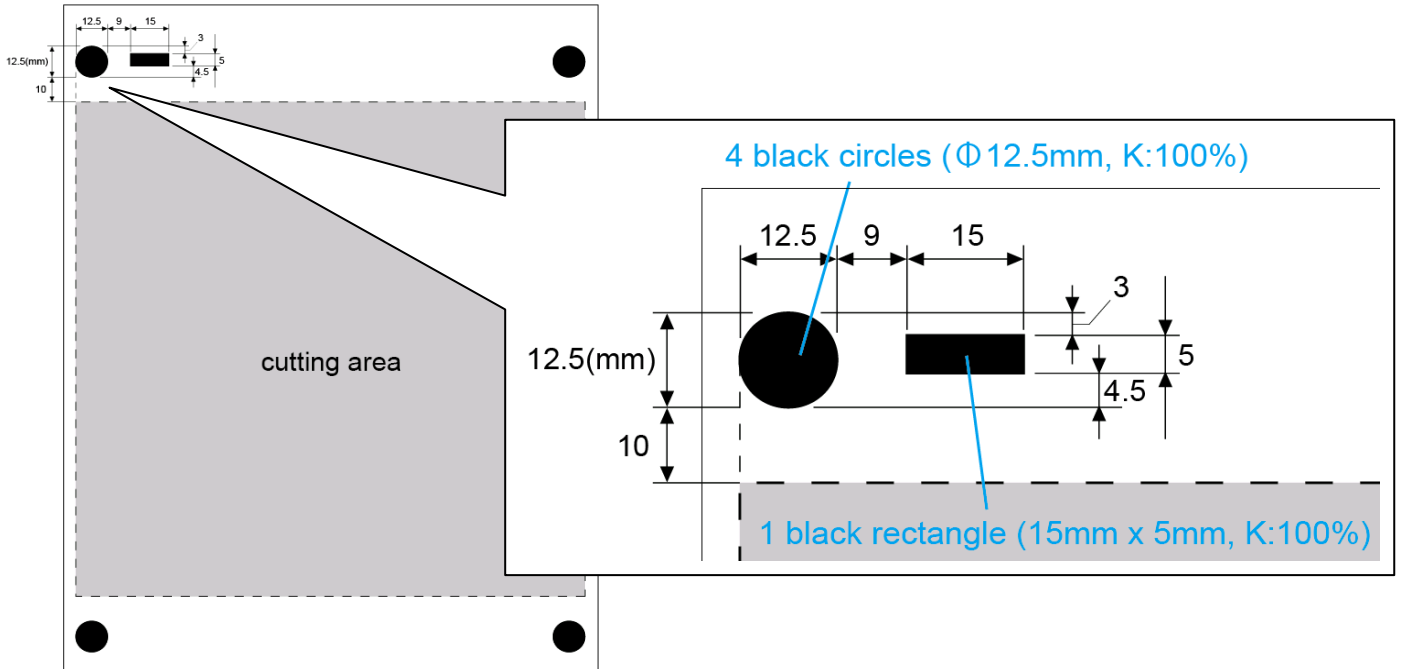


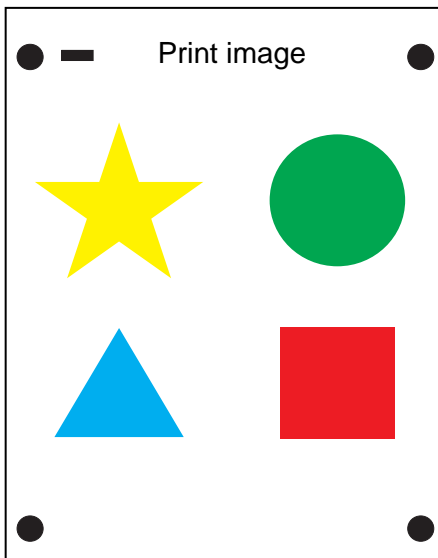
Print & Cut workflow with self-made cropmarks

1. Start the drawing software.

2. Put four black circles (12.5mm x 12.5mm, K:100%) and one rectangle(15mm x 5mm, K:100%) as cropmark.
* Check the location below.



3. Make the print image in the cutting area and save it as an **eps** file.

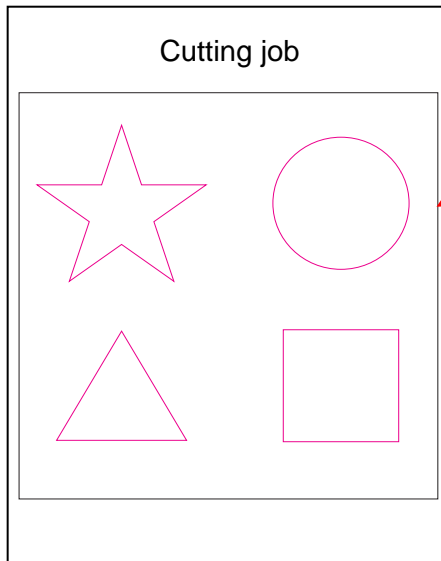


Why is it necessary to save the data as eps files?

When importing the image to the RVW which is saved as an eps file, the edge of the image will be recognized as page size. It is easy to align the print image and the cutting job if you use this fundamental rule.

4. Make the cutting job and save it as an **eps** file.

* **Put a square frame which is the same size as the cutting area.**

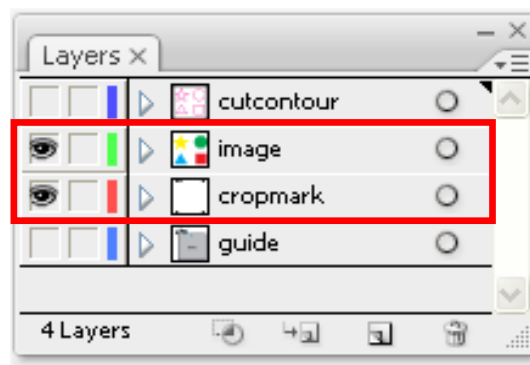
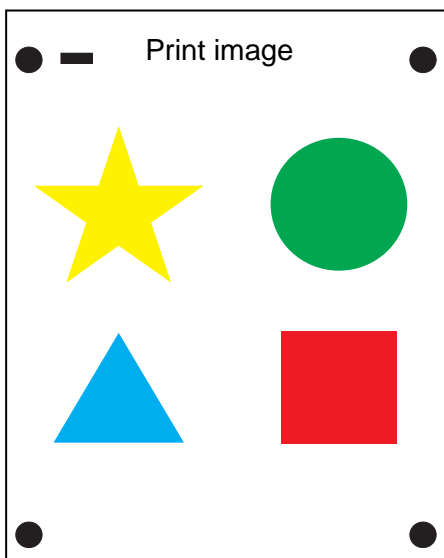


square frame

Why is it necessary to put a square frame?

If you put a square frame which is the same size as the cutting area, the area will be recognized as the cutting area.

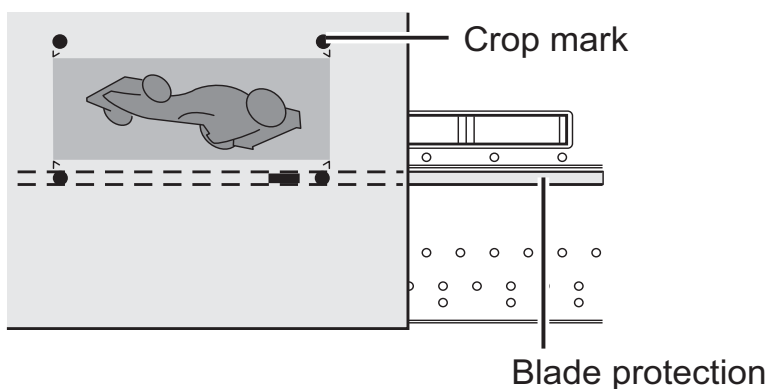
5. Print the image with Roland inkjet printer.



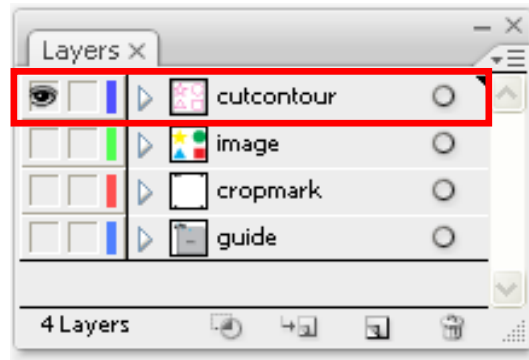
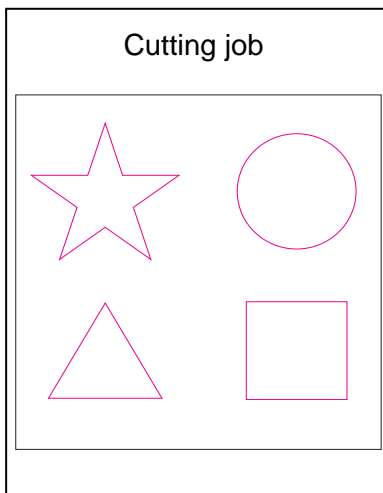
Activate these two layers

6. Load the printed media to the print & cut machine.

* Align the crop mark position as follows.

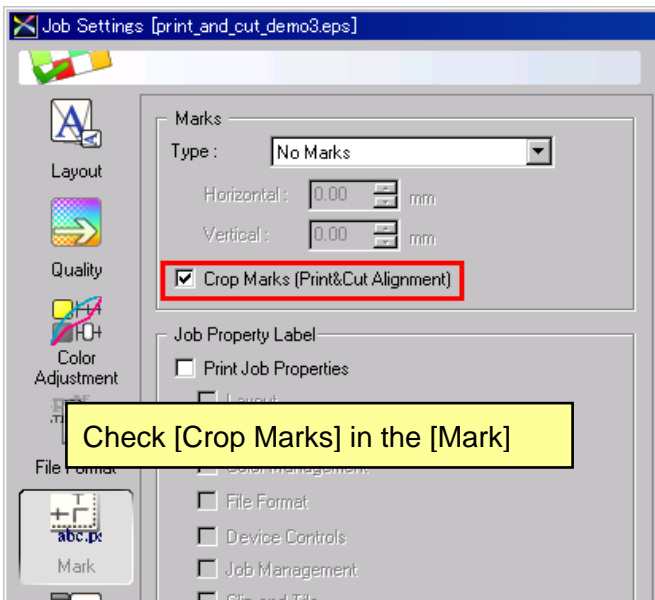


7. Start the RVW and import the cutting job.

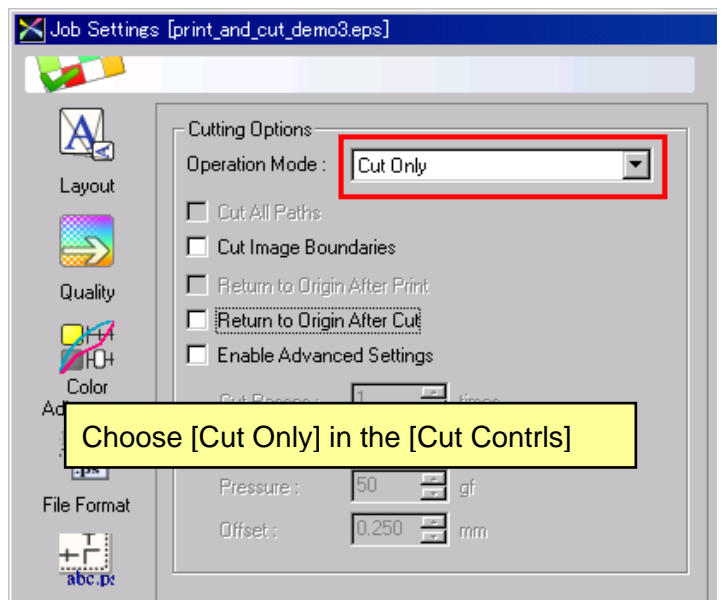


Activate only this layer

8. Send the cutting job to the print & cut machine with following settings.



Check [Crop Marks] in the [Mark]



Choose [Cut Only] in the [Cut Contrls]

NOTE

Never change the scale of the print image. When the size of the crop mark has been changed, RVW does not detect the cropmarks.