



## **Scanvec Amiable Contour Cutting Guide**

Scanvec Amiable, Inc.  
2 International Plaza, Suite 625  
Philadelphia, PA 19113-1518  
USA  
610-521-6300  
[www.scanvecamiable.com](http://www.scanvecamiable.com)

## Contents

Introduction .....	1
Hybrid Output.....	1
Virtual Hybrid Output .....	1
Creating Output Device Setups .....	2
Adding New Setups To Production Manager or PhotoPRINT .....	2
Designing Contour Cut Jobs in Flexi .....	3
Converting Vector Objects to Contour Cuts.....	3
Using the Contour Cut Effect.....	3
Outputting Contour Cut Jobs in Flexi.....	5
Sending Contour Cut Jobs to Production Manager .....	5
Outputting Contour Cut Jobs from Production Manager.....	6
Outputting Contour Cut Jobs in PhotoPRINT .....	7
Setting Up a Job for Contour Cutting.....	7
Hybrid Device Output.....	7
Virtual Hybrid Output .....	7
Appendix A: Notes on Specific Output Devices.....	9
GCC SignPal Jaguar III .....	9
Gerber GS15, HS-15, HS-15 Plus, HS-750, HS-750 Plus.....	11
Graphtec 5100/5100A.....	12
Ioline SmarTrac Contour Cutters .....	14
Mimaki CG-60 EX, CG-100 EX, CG-130 EX Cutters.....	15
Mimaki CG-75 FX, CG-130 FX, CG-160 FX Cutters .....	16
Mutoh SC-850D/1400D .....	18
Roland CAMMJET and SOLJET Devices.....	20
Roland VersaCAMM SP-300/SP-300V/SP-540V .....	21
Summa OPOS .....	23

# Introduction

This guide is intended to help Scanvec Amiable users to output accurate and high-quality contour cut jobs on the various cutters and hybrid devices that our software supports.

## Hybrid Output

A number of output devices exist that can both print an image and cut a contour on it. These are known as *hybrid devices*.

In general, when a job with both printed and cut elements is sent to a hybrid device, the printed elements are output first, and then the contour is cut immediately afterwards as part of the same action.

### ***Flexi Hybrid Output Workflow***

The steps needed to output contour cut jobs from a hybrid device in Flexi are:

1. Creating setups for your output devices.
2. Designing the job.
3. Setting job properties using either the RIP & Print dialog.
4. Sending the job to Production Manager.
5. Outputting the job from Production Manager.

### ***PhotoPRINT Hybrid Output Workflow***

The steps needed to output hybrid jobs in PhotoPRINT are:

1. Creating setups for your output devices.
2. Adding the job.
3. Setting job properties.
4. Sending the job to the output device.

## Virtual Hybrid Output

*Virtual hybrid* output produces results similar to hybrid output, using a separate printer and cutter. The job is first printed out on a printer, then loaded into a cutter and cut.

When a virtual hybrid job is output, it generates both a printed job and a cut job. The printed job is printed immediately. The cut job is held in the cutter queue to give the user time to print the job and load the printed output into the cutter. Once the printed output is loaded into the cutter, the user then sends the cut job manually.

### ***Flexi Virtual Hybrid Output Workflow***

The steps needed to output contour cut jobs from a virtual hybrid setup in Flexi are:

1. Creating setups for your output devices.
2. Designing the job.
3. Setting job properties using the RIP & Print dialog.
4. Sending the job to Production Manager.
5. Outputting the printed job from Production Manager.
6. Loading the printed output into the cutter.
7. Outputting the cut job from Production Manager

### ***PhotoPRINT Virtual Hybrid Output Workflow***

The steps needed to output contour cut jobs from a virtual hybrid setup in PhotoPRINT are:

1. Creating setups for your output devices.
2. Adding the job.
3. Setting job properties.
4. Sending the job to Production Manager.
5. Sending the printed job to the printer.
6. Loading the printed output into the cutter.
7. Sending the cut job to the cutter.

# Creating Output Device Setups

Setups provide the link between the software and your output devices. Each setup contains the following information:

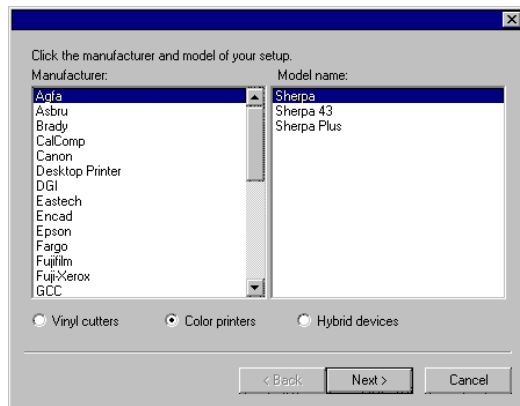
- The type of output device being used.
- The method used to communicate with the device.
- Details of how incoming print jobs will be processed.
- The default job properties that will be applied to a new job.

Production Manager and PhotoPRINT Server allow for multiple setups to be in use at the same time. It is possible to have more than one setup for each output device. This is useful because it allows you to configure each setup for a different purpose. You can have one setup for printing proofs, and another for final output, for instance. You can also have different setups for different output media.

## Adding New Setups To Production Manager or PhotoPRINT

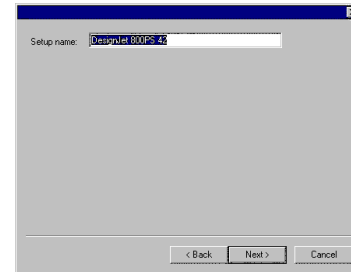
To add new setups:

1. From the **Setup** menu, select **Change Setup** or **Add Setup**.



2. Select the type of device being set up.

3. Select the **Manufacturer** and **Model Name** of the output device from the list.
4. Click **Next**.



5. Edit the **Setup name** of the device.
6. Click **Next**.
7. Select the **Port** the output device uses for communication. If necessary, edit the communications settings for the chosen port.
  - ☰ If **TCP/IP** is available for the network output device, use **TCP/IP**. If not, you should choose **LPR** or **FTP**.
8. Click **Finish**.

# Designing Contour Cut Jobs in Flexi

Contour cut jobs contain both a printed element, and one or more contour cuts.

Contour cut jobs are output using the RIP & Print dialog. When the RIP & Print dialog is used, all design elements are automatically converted to printed graphics, except for those elements that were created specifically as contour cuts. Those contour cuts will remain as cut elements, and will be cut into the printed design when output.

There are two main ways in which contour cuts can be added to jobs:

- Objects in a job can be converted into contour cut paths.
- The Contour Cut effect can be used to trace a contour around one or more objects.

## Converting Vector Objects to Contour Cuts

Vector objects can be transformed into contour cuts. This allows you create a contour cut of any needed shape.



*A fan shape converted into a contour cut*

To convert a vector object into a contour cut:

1. Select the object.
2. From the **Arrange** menu, point to **Contour Cut** and then select **Make Contour Cut**.

The object's outline color will change to a light gray, indicating that it has been converted to a contour cut. Even after being converted to a contour cut, the object will have its original attributes.

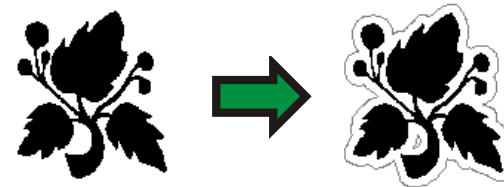
## Converting Contour Cuts Back Into Vector Objects

To convert the contour cut back to a vector object:

1. Select the contour cut.
2. From the **Arrange** menu, point to **Contour Cut** and then select **Release Contour Cut**.

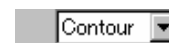
## Using the Contour Cut Effect

The Contour Cut effect allows you to trace a contour cut around one or more objects in your design.



To trace a contour cut around one or more objects using the Contour Cut effect:

1. Select the objects.
2. From the **Effect** menu, select **Contour Cut**.
3. Adjust the values in DesignCentral.



Select the type between Contour, Rectangle and Ellipse.



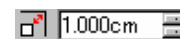
Contour mode



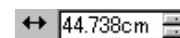
Rectangle mode



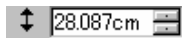
Ellipse mode



Offset distance from object to cutting line. The value can be negative, allowing you to make a contour cut line inside the design, in order to prevent misalignments in printing and cutting process. This field is only available for Contour mode.



Width of the contour shape (Ellipse or Rectangle).



Height of the contour shape (Ellipse or Rectangle).

**Proportional**

Check this value to assure that the cutting line will be resized proportionally when you change its height or width. This option is not available for Contour mode.

**With Holes**

When this option is checked, all holes in the selected objects will have an inner contour cut line. This option is not available for Ellipse or Rectangle mode.



**Contour with Holes**

**Contour Without Holes**



Joint Type, specify how the corners are contoured.

4. Click **Apply**.

### ***Tracing Bitmaps with the Contour Cut Effect***

To allow the Contour Cut effect to trace the outline of an object in a bitmap, make the background of the image transparent using the Make Transparent function. Otherwise, the Contour Cut effect will only be able to trace around the outside of the bitmap.



**Opaque Background**



**Transparent Background**

# Outputting Contour Cut Jobs in Flexi

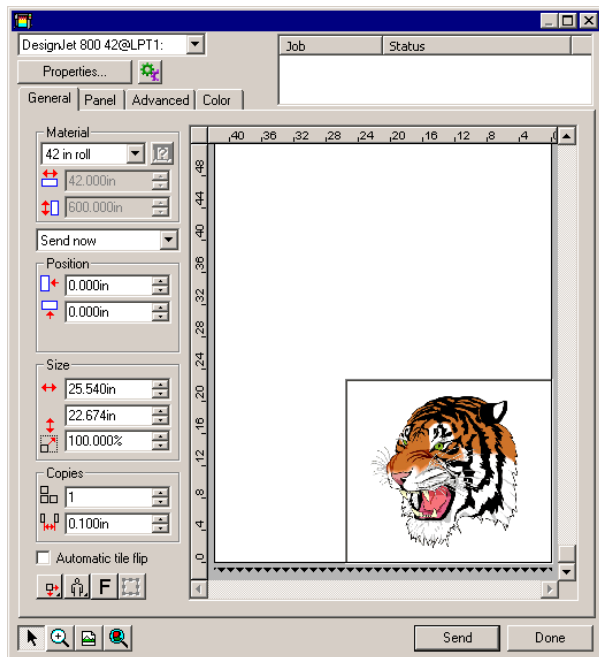
There are two stages to outputting jobs in Flexi. First, the job is sent to Production Manager using the RIP and Print dialog. The job is then sent to the output device from Production manager.

## Sending Contour Cut Jobs to Production Manager

To begin the output process, select the objects you want to output and open the RIP and Print dialog in one of the following ways:

- From the **File** menu, select **RIP and Print**.
- Click on the **RIP and Print** button in the toolbar.

If no objects are selected, all objects in the design will be output.



## Selecting the Printer

Select the printer you want to use from the list in the top left corner of the dialog.

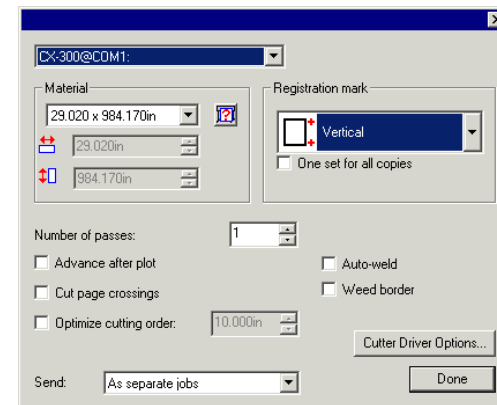
## Selecting the Cutter for Hybrid Output

If you are printing the job to a hybrid device, the hybrid device will automatically be selected as the cutting device as well.

## Selecting the Cutter for Virtual Hybrid Output

To select the cutter this will be used to cut the contours in a virtual hybrid job:

1. Select the **Advanced** tab of the RIP and Print dialog.
2. Click on the **Contour** button.



3. Select the cutter from the list in the upper left corner of the dialog.
4. Set **Registration mark** to the desired registration mark.
5. Click **Done**.

## Sending the Job to Production Manager

Click the **Send** button to send the job to Production Manager.

## Outputting Contour Cut Jobs from Production Manager

There are slightly different procedures to follow when outputting a hybrid output job vs. a virtual hybrid job.

### *Outputting a Hybrid Output Job*

To output a hybrid output job, use one of the following methods:

- Select the job and from the **File** menu, select **Send**.
- Right-click the job and select **Send** from the context menu.

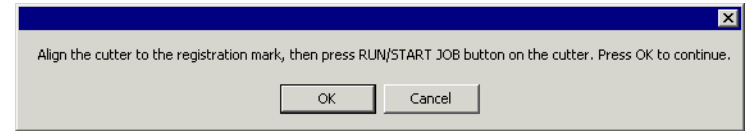
The job will be printed, then contour cut immediately afterwards as part of the same operation.

### *Outputting a Virtual Hybrid Job*

When a job containing contour cuts is RIPed as a virtual hybrid job, both a print job and a separate cutting job are generated. The print job will be output automatically, but the contour cut job must be sent to the cutter manually. This is done to give the user the time to get the output out of the printer and load it into the cutter.

To output the contour cut of a virtual hybrid job on a Gerber cutter:

1. Output the printed job.
2. Load the printed output into the cutter.
3. Send the cut job to the cutter using one of the following methods:
  - Select the job and from the **File** menu, select **Send**.
  - Right-click the job and select **Send** from the context menu.



4. Use the front panel controls on the cutter to position the head of the cutting device over the registration mark.
5. Press the **RUN/START JOB** button on the cutting device (or **Run Single**, etc.).
6. Click **OK** in the software.



# Outputting Contour Cut Jobs in PhotoPRINT

## Setting Up a Job for Contour Cutting

In order for a contour to be cut when a job is output through a hybrid device or virtual hybrid, the following must be true:

- The job must be vector-based.
- The contours to be cut must be assigned a stroke with a custom color named **CutContour**.

For specific details on setting up jobs within a given application, please consult the *Client Application Print Guide*.

## Hybrid Device Output

To output a job that includes a contour cut through a hybrid device:

1. Set up the job as described above.
2. Add the job to the setup for a hybrid device.
3. Open the Job Properties dialog for the job and make sure the **Send** setting in the **Workflow** tab is set to **Print and contour**.
4. RIP and print the job normally.



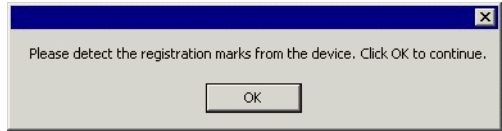
The contour will be cut after the job is printed.

## Virtual Hybrid Output

The software allows you to use a printer and a cutting device together to produce the same results as a hybrid printer/cutter.

### ***Virtual Hybrid Output on a Cutter with Automatic Alignment***

To output a job using virtual hybrid output, and an automatically aligned cutter:


1. Set up the job as described above.
  2. Add the job to the setup for the printer you want to use as part of the virtual hybrid.
  3. Open the Job Properties dialog for the job and select the **Workflow** tab.
  4. Check the **Send cut job** box and select the cutter you want to use as the second half of your virtual hybrid.  
 When you select the cutter in the Workflow tab, the default registration marks for that cutter are automatically added to the job.
  5. Click **OK** to close the Job Properties dialog.
  6. RIP and print the job.  
 Once you RIP and print the job, the cut portion of the job automatically appears in the Hold Queue.
  7. Remove the output medium from the printer and load it into the cutter.
  8. Output the cut job in the Hold Queue as you would a normal print job.
- 
9. Align the cutting head over the first automatic registration mark (lower right if not marked) using the controls on the front panel of the cutter.
  10. Click **OK** to cut the contour.

### ***Virtual Hybrid Output on a Manually Aligned Cutter***


To output a job using virtual hybrid output, and a manually aligned cutter:

1. Set up the job as described above.
2. Add the job to the setup for the printer you want to use as part of the virtual hybrid.
3. Open the Job Properties dialog for the job and select the **Workflow** tab.

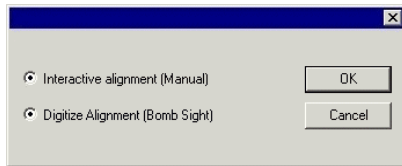
4. Check the **Send cut job** box and select the cutter you want to use as the second half of your virtual hybrid.

 When you select the cutter in the Workflow tab, the default registration marks for that cutter are automatically added to the job.

5. Click **OK** to close the Job Properties dialog.
6. RIP and print the job.

 Once you RIP and print the job, the cut portion of the job automatically appears in the Hold Queue.


7. Remove the output medium from the printer and load it into the cutter. Make sure the output medium is straight, and align the registration marks to the origin for the cutter.
8. Output the cut job in the Hold Queue as you would a normal print job.



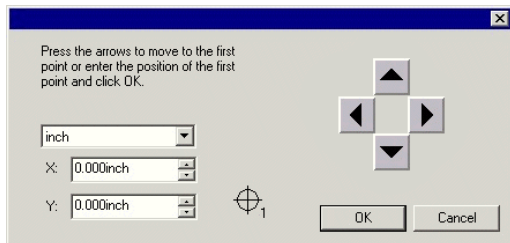
9. Select the method to be used to position the cut head over the registration marks and click **OK**.

**Interactive alignment** You will position the cut head over the registration marks using software controls.

**Digitize alignment** You will position the cut head over the registration marks using the controls on the face of the cutter.

 This option is only available when a bi-directional communications protocol such as serial or USB is used.

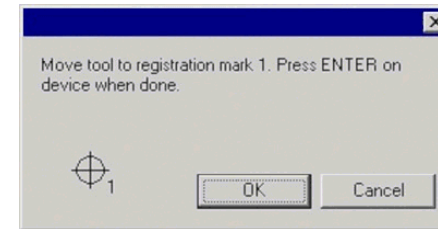
- a. To indicate the position of the registration marks using **Interactive alignment**:



- i. Use the arrow buttons to position the head of the cutting device over registration mark 1 and click **OK**.

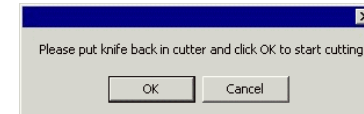
- ii. Repeat for all additional registration marks.

- b. To indicate the position of the registration marks using **Digital alignment**:



- i. Use the front panel controls on the cutter to position the head of the cutting device over registration mark 1. Press **Enter** on the cutting device, then click **OK**.

- ii. Repeat for all additional registration marks.



10. Make sure the knife is loaded into the cutter, then click **OK** to cut the contour portion of the design.

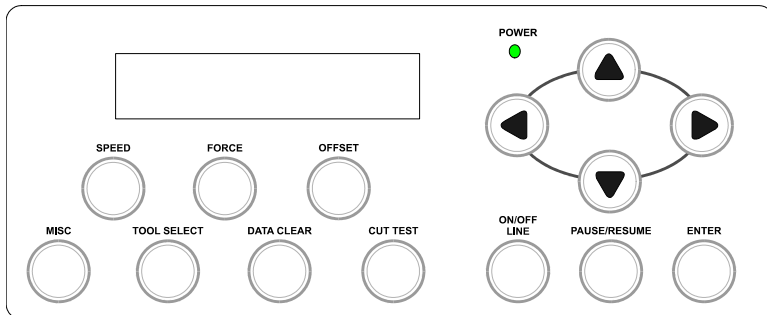
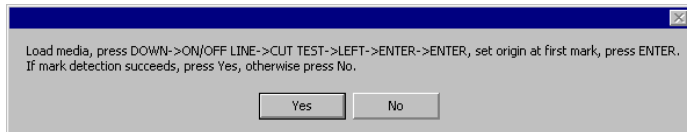
# Appendix A: Notes on Specific Output Devices

## GCC SignPal Jaguar III

### *Cutting Contours Using the GCC Accu-Aligning System*

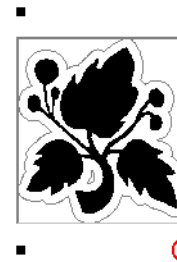
To cut a contour using GCC AAS registration marks:

1. Add a setup for the cutter to PhotoPRINT or Production Manager.
2. Depending on the application, do the following:
  - In PhotoPRINT, add the job and open Job Properties.
  - In Flexi, design the job and open the RIP and Print dialog.
3. Set **Registration Mark** to **GCC**.
4. Print the job and load the printed output into the cutter.
5. Send the cut job.



6. On cutter AFTER sending job:
  - a. Load media and lower the lever.

- b. Press the down arrow key to select "Edge" detection.
- c. Press **ON/OFF LINE** to take the cutter offline.
- d. Press **CUT TEST**.
- e. Press the left arrow key to select "AAS Function.
- f. Press **ENTER**.
- g. Press **ENTER** again to select "AAS-3-points" detection.




- h. Use the arrow keys to set the origin on the first (or lower right) mark then press **ENTER**.
- i. If unsuccessful, you must unload the media then begin again at step a.
  - If successful, the sensor will detect 3 of the four marks and return to the origin.
- j. Click **Yes** in the software. The job will now cut.

### AAS Offset Calibration

In order for the contour cut to be accurate, we found it necessary to adjust the X and Y values of the "AAS Offset". To get to the offset settings on the cutter, follow this procedure:


1. Press the **ON/OFF Line** key to take the cutter offline.
2. Press the **MISC** key.
3. Press the left arrow key twice to get to the **AAS Offset** menu.
4. Press **ENTER** to accept.
5. To adjust the offset, use the left and right arrow keys to select between the **X**: and **Y**: settings. Use the up and down arrow keys to adjust the values.

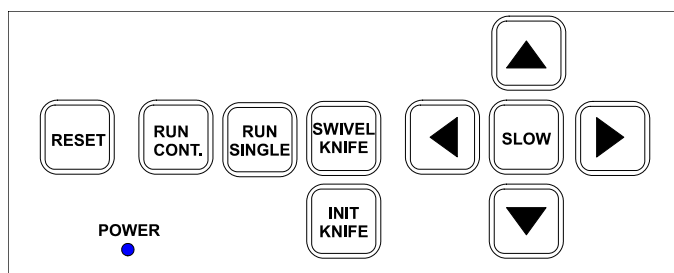
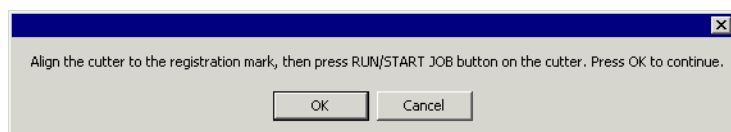
 Positive X values will cause the contour to shift down from its current position. Positive Y values will cause the contour to shift to the right of its current position. Of course, negative values shift in the opposite directions as described.

6. Press **ENTER** to accept changes or press **ON/OFF LINE** to abort.

## Gerber GS15, HS-15, HS-15 Plus, HS-750, HS-750 Plus

To cut a contour using a Gerber cutter:

1. Add a setup for the cutter to PhotoPRINT or Production Manager.
2. Depending on the application, do the following:
  - In PhotoPRINT, add the job and open Job Properties.
  - In Flexi, design the job and open the RIP and Print dialog.
3. Set **Registration Mark** to **Gerber Edge Center**. 
4. Print the job and load the printed output into the cutter.
5. Send the cut job.



6. Use the front panel controls on the cutter to position the head of the cutting device over the Gerber registration mark.



7. Press the **RUN/START JOB** button on the cutting device (or **Run Single**, etc.).
8. Click on **OK** in the software.

The cutter will detect the registration mark, then cut the contours.

## Graphtec 5100/5100A

The 5100 series cutters are able to automatically align themselves using registration marks. Two different types of registration marks are supported:



Type 1

Type 2

When using the Graphtec registration marks, there must be the same number of copies in each row. If need be, add extra copies to fill up the last row.



Good

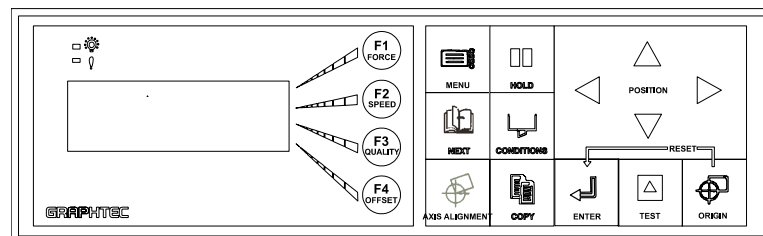
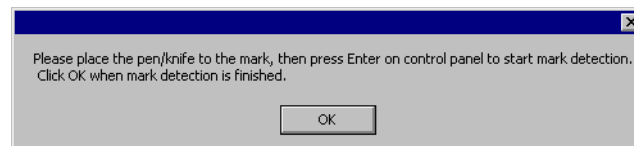


Bad

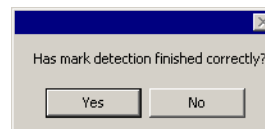
### Graphtec Type 1 & Type 2 Marks (Manual Alignment)

To cut a contour into a job using Graphtec Type 1 or 2 marks:

1. Make sure the connection to the cutter is a serial cable. USB connections are only supported for the automatic Type 1 & Type 2 marks.
2. Add a setup for the cutter to PhotoPRINT or Production Manager.
3. Print the job and load the printed output into the cutter.
4. Set the mark type in the cutter
5. Send the cut job.



6. Using the controls on the cutter, align the knife with the lower right registration mark and press the **ENTER** button on the cutter.
7. Click on **OK** in the software.

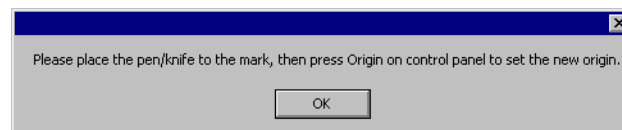


8. Click **Yes**.

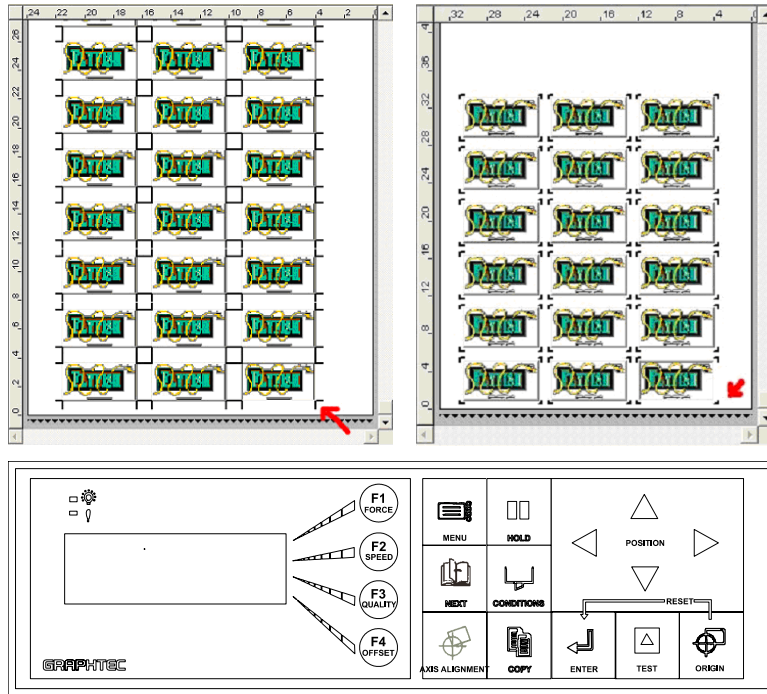
### Graphtec Type 1 & Type 2 Automatic Marks

To cut an outline around a job using Type 1 or Type 2 automatic marks:

1. If you are connecting to the cutter via USB, install the Graphtec USB driver.
2. Add a setup for the cutter to PhotoPRINT or Production Manager.
3. Print the job and load the printed output into the cutter.
4. Send the cut job.



5. Place the knife within the lower-right mark and press the **Origin** button on the cutter.



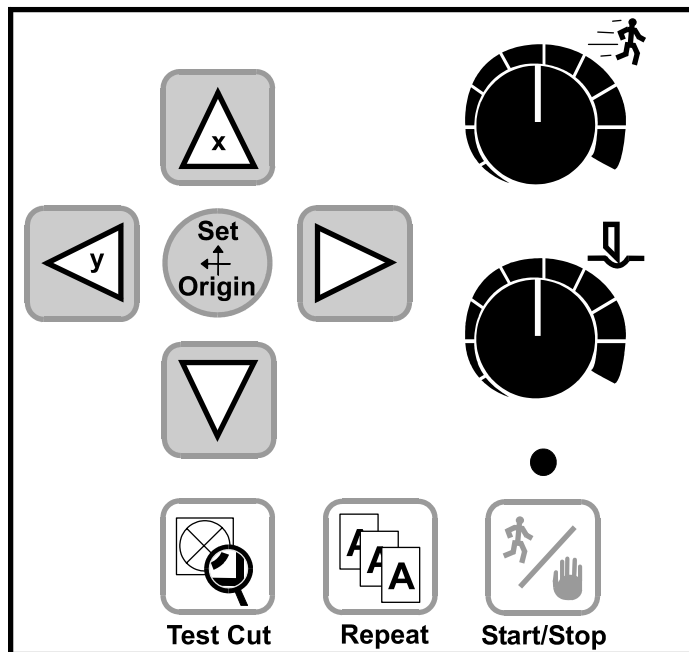
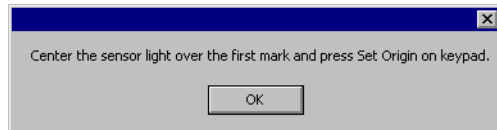
6. Click **OK** in the software.

The cutter will automatically detect all of the remaining marks and cut them individually.

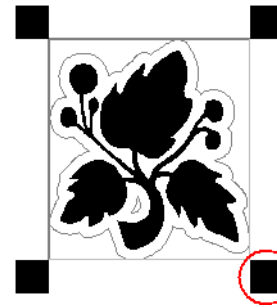
## Ioline SmarTrac Contour Cutters

To cut a contour using Ioline registration marks:

1. Print the job and load the printed output into the cutter.
2. Send the cut job.

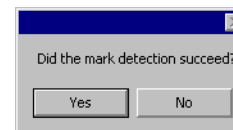


3. Align the sensor light over the first mark (the lower right mark), press the **Set Origin** button on the cutter, then click **OK** in the software.



- ☞ Dial the cutting speed down when aligning on the marks to make it easy to control. Dial the speed back up again to cut.

The cutter will automatically find the other registration marks.



4. Click **Yes** to cut the contour.

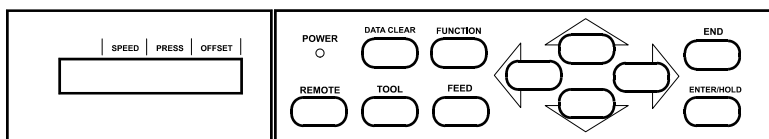
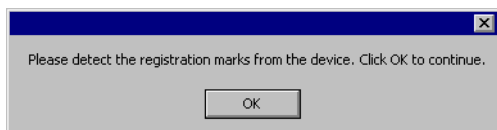
If the cutter does not automatically find the registration marks, click **No** to abort the job.



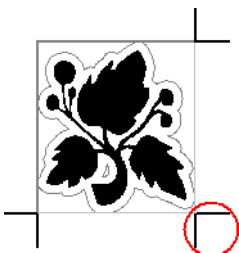
## Mimaki CG-60 EX, CG-100 EX, CG-130 EX Cutters

To cut a contour using the Mimaki CG-60 EX, CG-100 EX, or CG-130 EX cutters:

1. If you are connecting to your cutter via USB, install the Mimaki USB driver.
2. Add a setup for the cutter to PhotoPRINT or Production Manager.
3. Depending on the application, do the following:
  - In PhotoPRINT, add the job and open Job Properties.
  - In Flexi, design the job and open the RIP and Print dialog.
4. Set **Registration Mark** to **Mimaki EX**.
5. Print the job and load the printed output into the cutter.
6. Send the cut job.



7. Align the cutting head over the first automatic registration mark (lower right if not marked) using the controls on the front panel of the cutter.

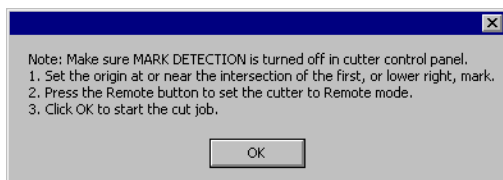


8. Click **OK** in the software.

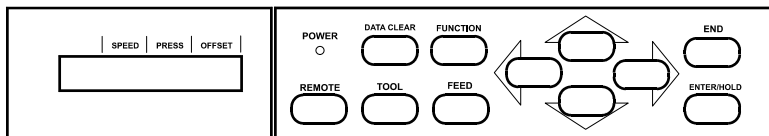
## Mimaki CG-75 FX, CG-130 FX, CG-160 FX Cutters

To cut a contour using the Mimaki CG-75 FX, CG-130 FX, or CG-160 FX cutters:

1. If you are connecting to your cutter via USB, install the Mimaki USB driver.
2. Add a setup for the cutter to PhotoPRINT or Production Manager.
3. Depending on the application, do the following:
  - In PhotoPRINT, add the job and open Job Properties.
  - In Flexi, design the job and open the RIP and Print dialog.
4. Set **Registration Mark** to **Mimaki Type 1**.
5. Print the job and load the printed output into the cutter.
6. Send the cut job.



7. Configure the cutter:



- a. If the LCD on the cutter reads **REMOTE**, press the **REMOTE** button on the cutter to switch it to local operation.
- b. Turn off automatic mark detection:
  - i. Press the **FUNCTION** button on the cutter.
  - ii. Use the up and down arrow buttons to select **Set Up**.

SET UP <ENT>

- iii. Press the **ENTER/HOLD** button.
- iv. Use the up and down arrow buttons to select **MARK DETECT**.

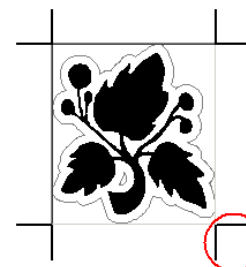
MARK DETECT <ENT>

- v. Press the **ENTER/HOLD** button.
- vi. Use the up and down arrow buttons to select **OFF**.

MARK DETECT: OFF

- vii. Press the **ENTER/HOLD** button.
- viii. Press **END** to back out of the menus.

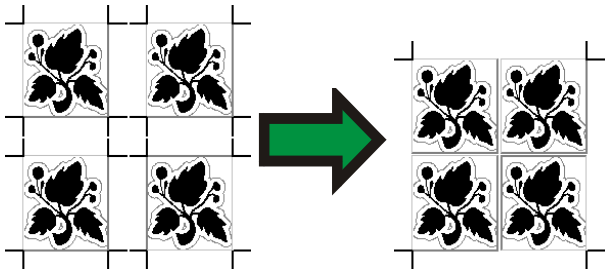
- c. Set the origin at the intersection of the lower right mark:



- i. Use the arrow keys to move the cutter head over the corner of the lower right registration mark.
  - ii. Press the **ENTER/HOLD** button.
  - d. Set the cutter to Remote mode. Pressing the **REMOTE** button on the cutter toggles Remote mode on and off.
8. Click **OK** in the software.

## ***Using One Set of Registration Marks for Multiple Copies of a Job***

When printing multiple copies of a job, the default is to have a separate set of registration marks for each copy. However, for the Mimaki CG-FX cutters, it is possible to use just one set of registration marks for the entire set of jobs.



Using a single set of registration marks for multiple jobs allows the jobs to be cut in less time, because the cutter has to process far fewer registration marks. It also saves material that would otherwise be taken up by the extra registration marks. However, it sacrifices some precision in cutting, because the cutting head does not get realigned for each copy.

To set the software to use one set of registration marks for the entire set of jobs, check **One set for all copies** in the Contour Options dialog under **Registration Mark**.

## Mutoh SC-850D/1400D

### *Cutting Jobs Using Automatic Mark Detection*

To cut a contour using the Mutoh SC-850D or 1400D cutters:

1. If you will be running the Mutoh cutter off of USB, install the Mutoh USB Drivers.
2. Add a setup for the cutter to PhotoPRINT or Production Manager.
3. Depending on the application, do the following:
  - In PhotoPRINT, add the job and open Job Properties.
  - In Flexi, design the job and open the RIP and Print dialog.
4. Set **Registration Mark** to **Mutoh**.
5. Print the job, then advance the media before cutting. There needs to be at least four inches of blank space above the top of the Mutoh registration mark.
6. Load the printed output into the cutter.
7. Send the cut job.

The cutter will automatically detect the Mutoh registration mark and cut the contours.

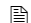
### *Cutting Jobs using Mutoh Cut Server*


Mutoh Cut Server is an application that cuts contours onto printed materials using Mutoh cutters.

Applications can output jobs to Cut Server by saving each job as a **.plt** file in a directory that Cut Server monitors. CutServer can then cut the jobs, using automatic registration marks to align the cuts with the printed material.

If a printed job is loaded into the cutter backwards, Cut Server will detect it, and will automatically rotate the cut job 180 degrees to match.

To cut a contour using Mutoh Cut Server, do the following:

1. If you will be running the Mutoh cutter off of USB, install the Mutoh USB Drivers.
2. Install the Mutoh Cut Server application.
3. Create a folder on your C: drive named **MutohJobs**.  
Ex:  
`C:\Program Files\FlexiSIGN-PRO 7.6v1\Jobs\Mutoh\SC850D\MutohJobs`
4. In Mutoh Cut Server, set the directory to the **MutohJobs** directory created earlier.
5. Launch PhotoPRINT Server or Production Manager.
6. Add a setup for your printer.
7. Add a setup for the Mutoh Barcode Cutter. Set the Cutter to use the **File** port, and set the **Default location** to the **MutohJobs** directory.
8. Depending on the application, do the following:
  - In PhotoPRINT, add the job and open Job Properties.
  - In Flexi, design the job and open the RIP and Print dialog.
9. Position the job at least 4 inches from the bottom of the media, and at least 4 inches from the right edge.
10. Set **Registration Mark** to **Mutoh Type 2** or **Mutoh Multiple Segments**.  
 Selecting **Mutoh Multiple Segments** automatically sets the number of segments so that no segment is larger than 50cm. To use only one segment, select **Mutoh Type 2**.
11. Send your print job.
12. Load the printed output into the Mutoh cutter.
13. Send your cut job.
14. Save the job file using the default name (You have to do this because the name of the file includes the barcode number).
15. Start Mutoh Cut Server.

16. Select the **.plt** job file and click **Send**. 

Mark detection takes about 30 seconds before cutting.

### **Printing Multiple Jobs on a Single Piece of Media**

Using Cut Server, you can output more than one job on a single sheet or roll of media.

In your design application, simply output the printed portions of the jobs one after another. The order you print the jobs in does not matter. The printed portion of each job will be marked with a barcode that will identify which contour cut job Cut Server should use with that design.

Once the print jobs have been output, you can then output all the cut jobs from your design application, sending them to Cut Server. Again, it does not matter which order you output the cut jobs in.

Next, load the printed output into the cutter and output the cut jobs from Cut Server. As each cut job is output, Cut Server will scan the barcodes the printed jobs until it finds the one that matches the cut job. Cut Server will then cut the contour onto that printed job.

## Roland CAMMJET and SOLJET Devices

Applies to: Roland CAMMJET CJ-400/500, CAMMJET PRO II 540, SOLJET SC-500, SOLJET PRO II SC-540, SOLJET PRO II EX SC-540 EX, SOLJET PRO II V SC-545 EX

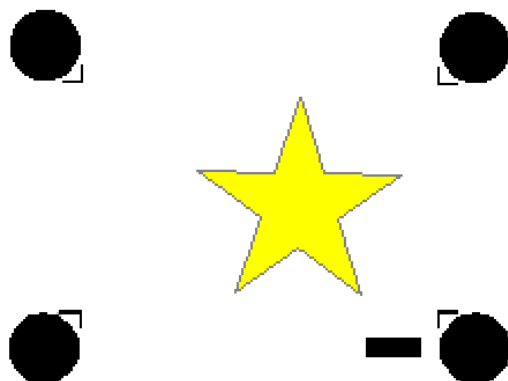
### Printing a Laminated Job

If you want to print a job, laminate it, and contour cut it later, the CAMMJET and SOLJET automatic alignment function makes it possible to align the printing and cutting positions.

1. Add a setup for the device to PhotoPRINT or Production Manager.
2. Depending on the application, do the following:
  - In PhotoPRINT, add the job and open Job Properties.
  - In Flexi, design the job and open the RIP and Print dialog.
3. Set **Send** to **Print job only**.
4. Set **Registration mark** to **Roland SolJet/CAMMJet**.

If you are using PhotoPRINT, the software automatically adds the appropriate registration marks to the job when you select the output device in the Workflow tab of Job Properties.

5. Click **Send**. The print out should look similar to the image shown below with black circles and crop marks added by the printer.



6. Remove the media from the printer and laminate it.

7. Reload the media in the printer.
8. Set **Send** to **Contour job only**.
9. Click **Send** and the device will automatically detect the alignment marks and cut the contour.

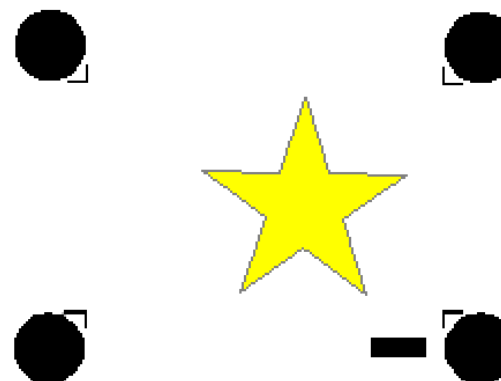
### Using a CAMMJET or SOLJET as a Virtual Hybrid

To print a job on another device and use a CAMMJET or SOLJET as a cutter:

1. When printing the job:
  - a. Select the CAMMJET or SOLJET as the cutter.
  - b. Set **Registration mark** to **Roland SolJet/CAMMJet**.

If you are using PhotoPRINT, the software automatically adds the appropriate registration marks to the job when you select the output device in the Workflow tab of Job Properties.

- c. Set **Send** to **Print job only**.
2. Print the job. The print out should look similar to the image below, with black circles and crop marks added by the printer.



3. Remove the media from the printer.
4. Load the media in the CAMMJET or SOLJET.
5. Set **Send** to **Contour job only**.
6. Click **Send**. The device will automatically detect the alignment marks and cut the contour.

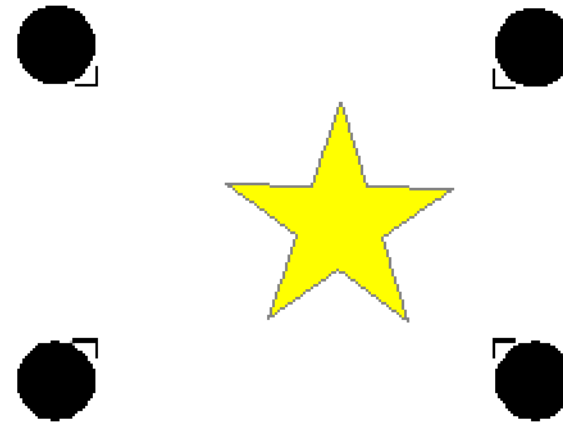
## Roland VersaCAMM SP-300/SP-300V/SP-540V

### *Printing a Laminated Job*

When you want to print a job, remove it from the printer (for lamination or the like), then reload the media and cut the job, the SP300 automatic alignment function makes it possible to align the printing and cutting positions.

To cut a contour using the Roland AutoSense Crop Marks:

1. Be sure you have installed the USB driver that was supplied on the "SP300 Driver Disk Printer Driver Installation" CD.
2. Add a setup for the cutter to PhotoPRINT or Production Manager.
  - a. Set **Port** to **USB\_Printer\_0**.
3. Depending on the application, do the following:
  - In PhotoPRINT, add the job and open Job Properties.
  - In Flexi, design the job and open the RIP and Print dialog.
4. Position the job at least 4 inches from the bottom of the media, and at least 4 inches from the right edge.
5. Set **Registration Mark** to **Roland VersaCAMM**.
6. Set **Send** to **Print job only**.
7. Send your print job.
  - a. After the printing, be sure to advance AT LEAST 6" before cutting the sheet.
  - b. Allow the graphic time to dry and finish with laminate, overcoat, etc.

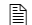


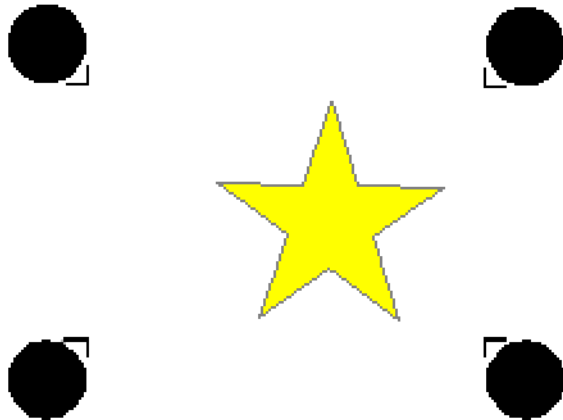
8. Reload the output into the printer:
  - a. Replace the graphic into the printer, aligning the crop marks with the cutter protection strip.
  - b. Place the pinch rollers outside of the graphic area.
  - c. Close the handle to lock the pinch rollers and ready the machine.
9. Set **Send Mode** to **Contour Only**.
10. Click the **Send** button to send the contour cut to the device. The device will then cut the contour, automatically compensating for any media skew

## Using a VersaCAMM as a Virtual Hybrid

To print a job on another device and use a VersaCAMM as a cutter:

1. When printing the job:
  - a. Select the VersaCAMM as the cutter.
  - b. Set **Registration mark** to **Roland VersaCAMM**.

 If you are using PhotoPRINT, the software automatically adds the appropriate registration marks to the job when you select the output device in the Workflow tab of Job Properties.
  - c. Set **Send** to **Print job only**.
2. Print the job. The print out should look similar to the image below, with black circles and crop marks added by the printer.



3. Remove the media from the printer.
4. Load the media in the VersaCAMM.
5. Set **Send Mode** to **Contour Only**.
6. Click **Send**. The device will automatically detect the alignment marks and cut the contour.

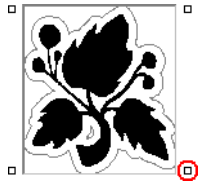


## Summa OPOS

### *Automatic Positioning Using OPOS Marks*

To cut a contour using the Summa cutters:

1. If you will be running the Summa cutter off of USB, install the Summa USB Drivers.
2. Add a setup for the cutter to PhotoPRINT or Production Manager.
3. Depending on the application, do the following:
  - In PhotoPRINT, add the job and open Job Properties.
  - In Flexi, design the job and open the RIP and Print dialog.
4. Set **Registration Mark** to **OPOS**.
5. Print the job and load the printed output into the cutter.
6. Send the cut job.
7. Line up the cutter with the OPOS mark:



- a. Use the cutter's arrow keys to move the sensor head (Not the pen/knife!) over the lower right OPOS mark.



- b. Press the Enter  button on the cutter.

The cutter will detect the marks, then cut the contours.