



VersaCamm SP-300/V

Using SP-300/V with VersaWorks on Computers Running Windows 7/Vista

Introduction

VersaCamm SP-300V and SP-300 shipped with printer drivers for Windows 2000 and XP. Although Windows Vista or Windows 7 drivers for SP-300/V are not available, VersaWorks does not require Windows printer driver to function with this printer.

Please note the requirements for installing and using VersaWorks on Windows Vista and Windows 7 PCs.

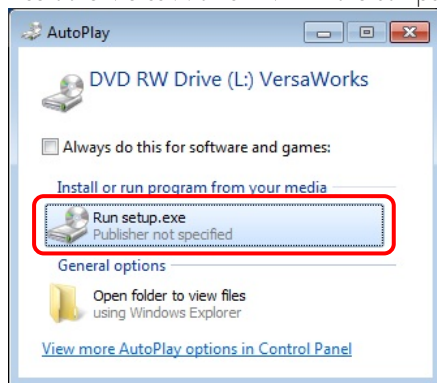
1. VersaWorks DVD version 3 or later. If your VersaWorks CD/DVD is earlier than version 3, call Roland's customer service to order a newer version of VersaWorks DVD.
2. Windows user account must have administrator privileges
3. Broadband internet connection to update VersaWorks and profiles to the latest version

Please follow the steps below to install VersaWorks and connect the SP-300/V on computers running Windows Vista and Windows 7.

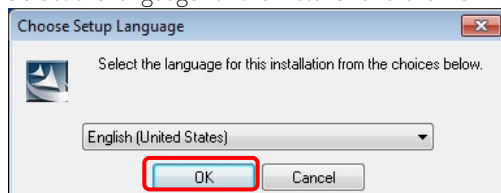
Installing VersaWorks on Windows Vista and Windows 7

Follow the steps below to install VersaWorks on Windows Vista or Windows 7:

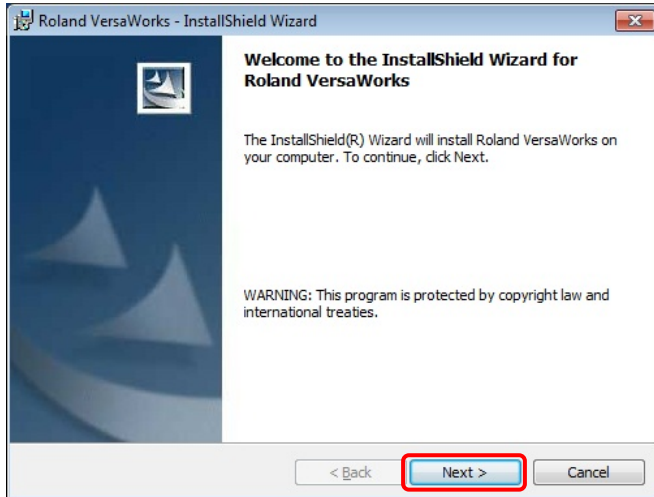
4. Insert the VersaWorks DVD in the computer's DVD drive. The **AutoPlay** window is displayed.



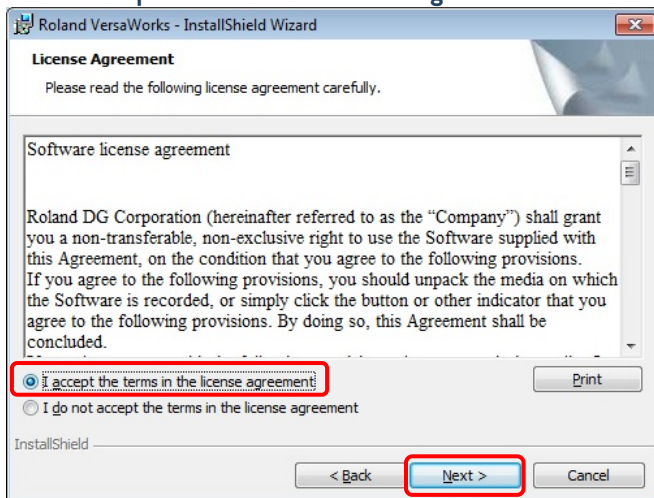
5. Click on **Run setup.exe**.
6. Select the language for the installer and click **OK**.



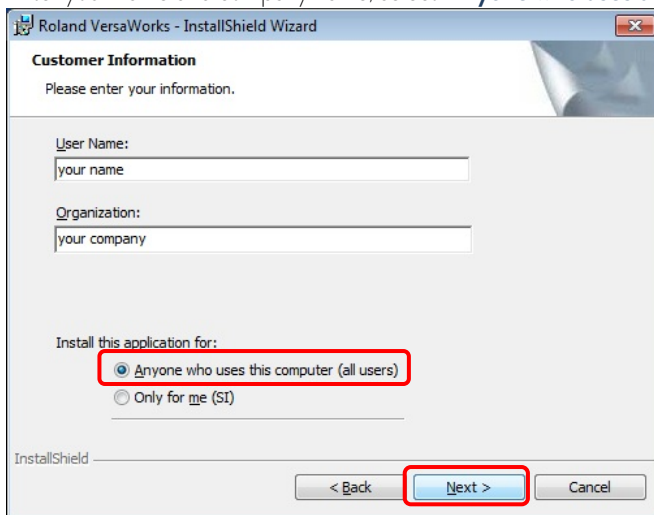
7. Click **Next**.



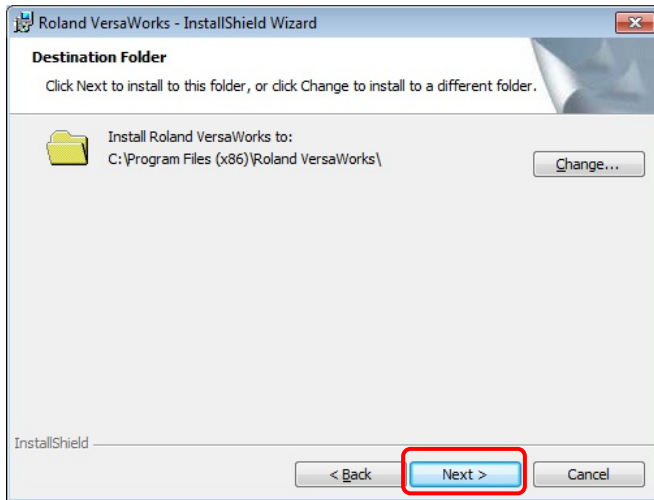
8. Select **I accept the terms in the license agreement** and click **Next**.



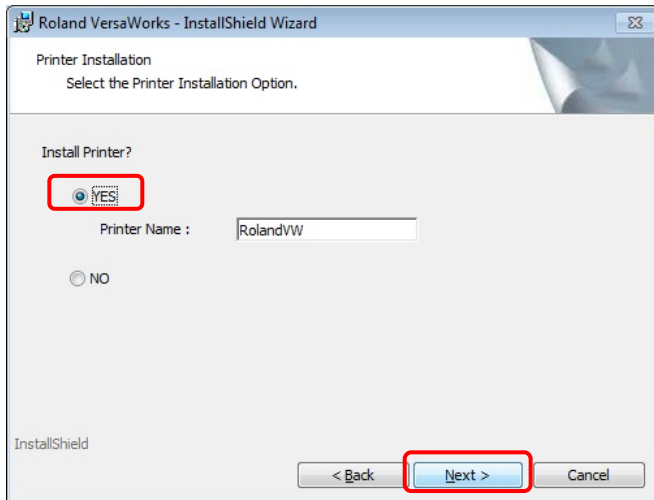
9. Enter your name and company name, select **Anyone who uses this computer** and click **Next**.



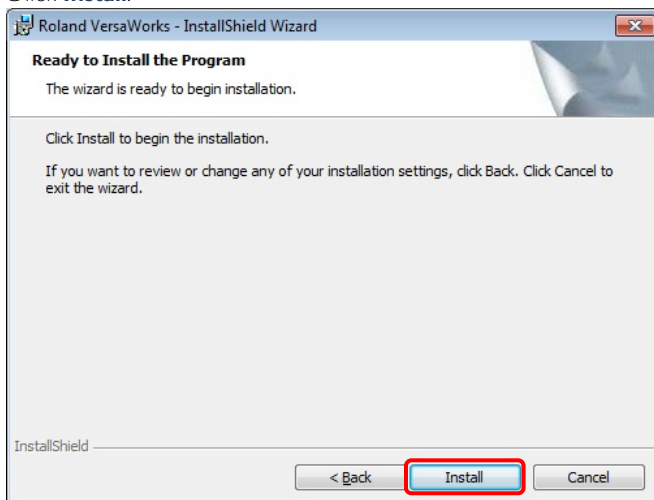
10. Click **Next** if you are installing in the default folder. If you want to change the default installation folder click **Change**, specify the destination folder, and then click **Next**.



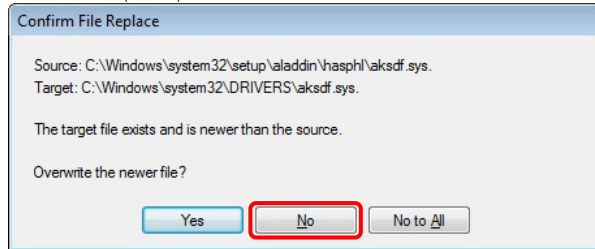
11. Select **Yes** and click **Next**.



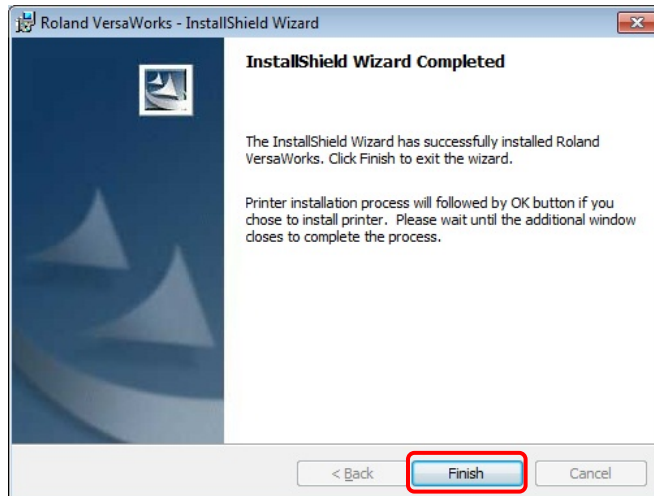
12. Click **Install**.



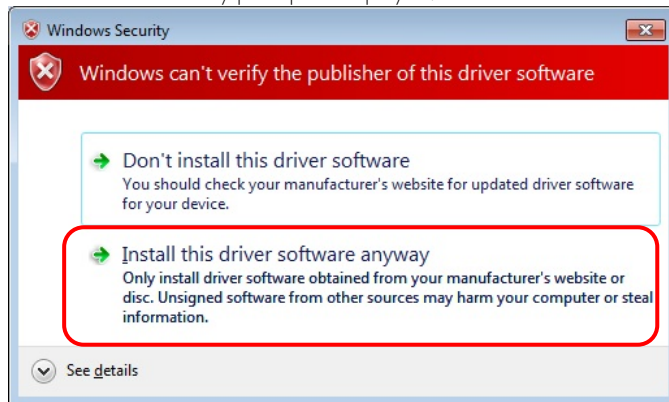
13. Click **No** if prompted to overwrite a newer file.



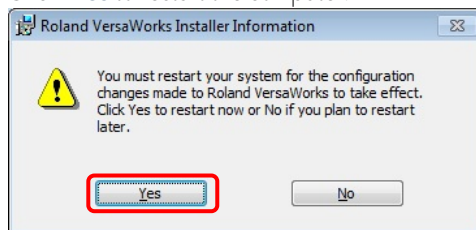
14. Click **Finish**.



15. If a Windows Security prompt is displayed, click **Install this driver software anyway**.



16. Click **Yes** to restart the computer.

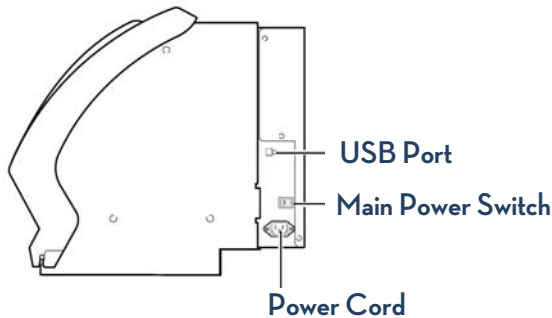


17. If you are running dongled version of VersaWorks, connect the dongle to the PC's USB port after the computer restarts.

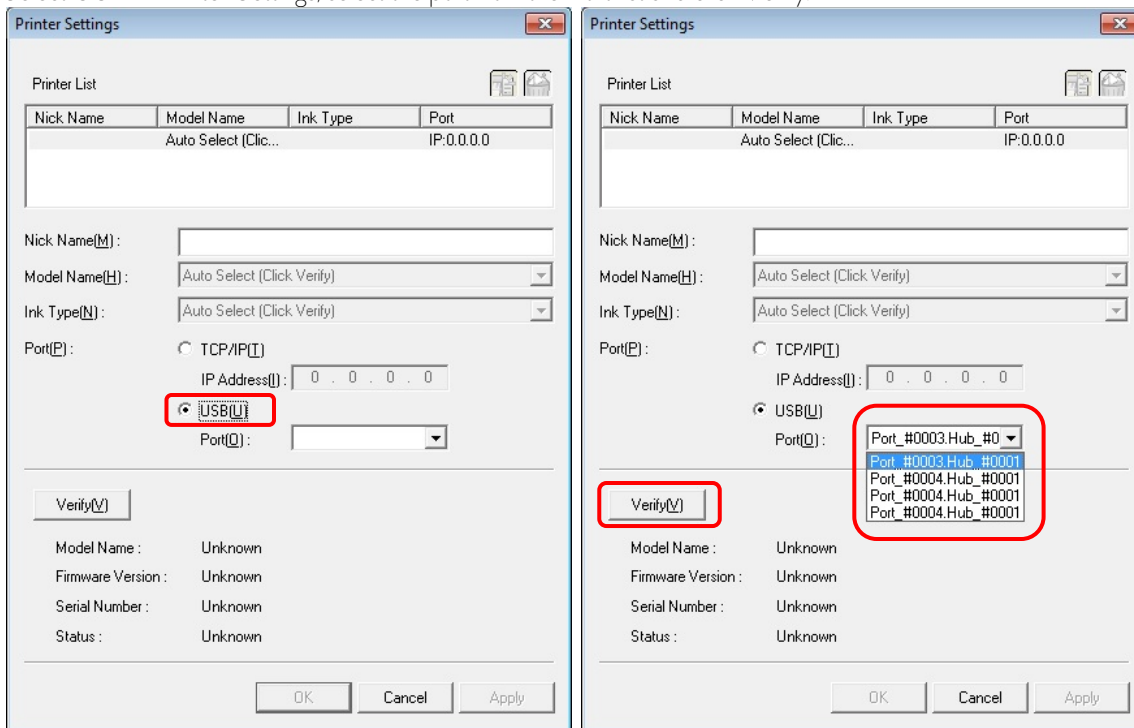
Connecting the SP-300/V to VersaWorks

Follow the steps below to connect the VersaCAMM printer to VersaWorks.

1. Turn **OFF** the main power of the printer. The main power switch is located on the right side of the printer.



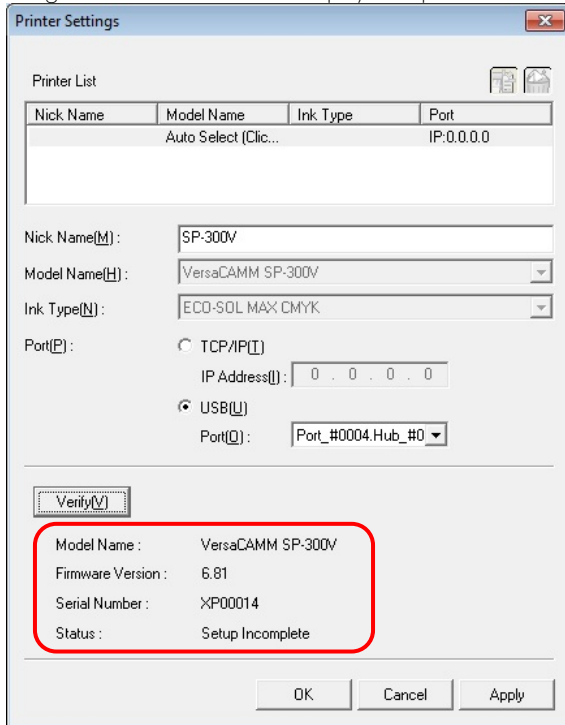
2. Connect the USB cable to the printer and the PC and then turn ON the printer's main and sub power. Windows will detect that a new device has been connected to the computer and will try to locate the driver. No user action is required if you are running Windows 7. If you are running Windows Vista and are prompted to locate the driver, select to not install the driver.
3. Wait until the Windows hardware detection completes the detection process. Launch VersaWorks.
4. Select USB in Printer Settings, select the port from the Port list and click Verify.



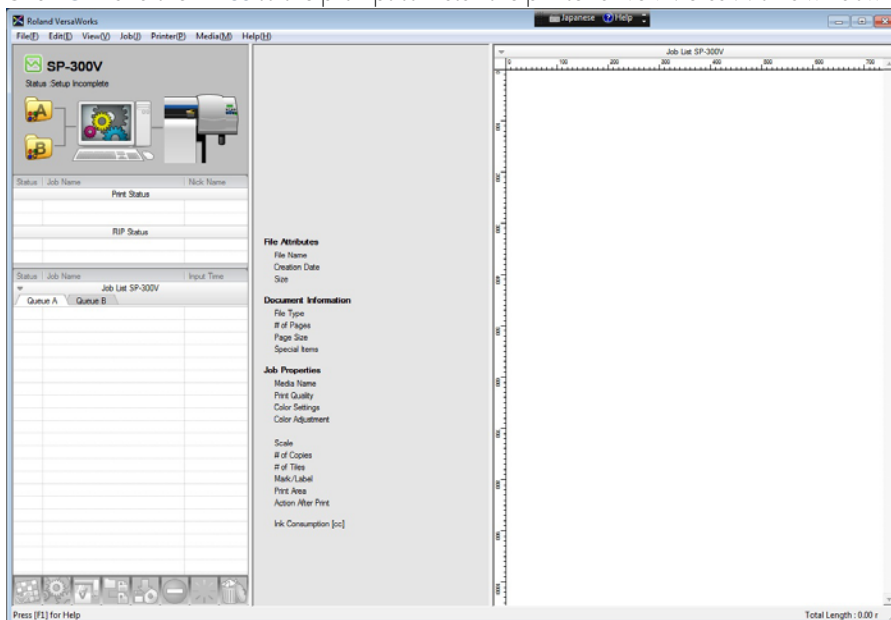
- The following error message may be displayed if the port selected above is not the one used for the printer.



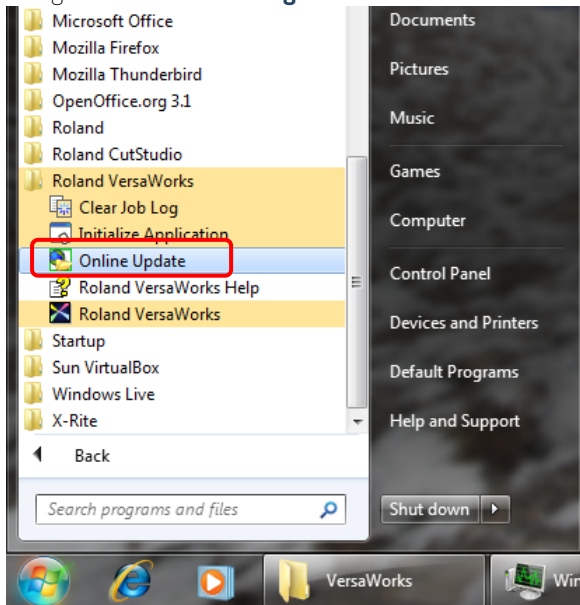
- If the message above is displayed, select the next port from the list and click **Verify**. Repeat this process until the SP-300/V is recognized and VersaWorks displays the printer name and serial number in the **Printer Settings** window.



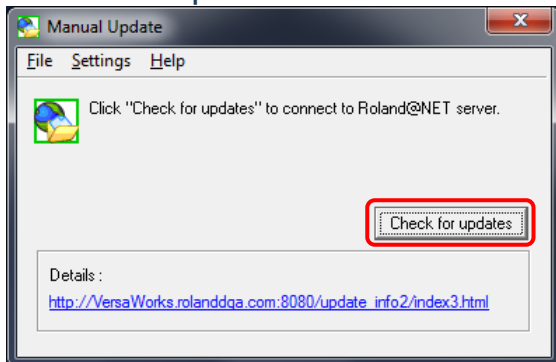
- Click **OK** and then **Yes** to the prompt to install the printer driver. VersaWorks window will be displayed as follows.



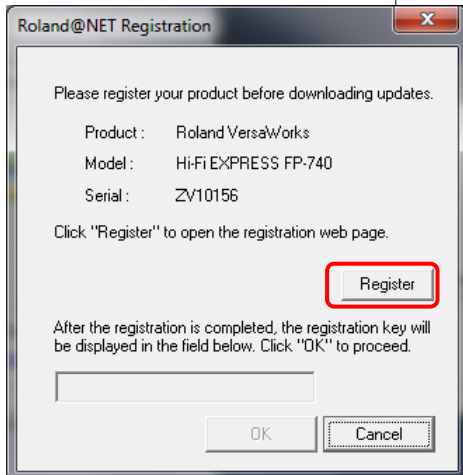
8. Close VersaWorks.
9. Navigate to **Start > All Programs > Roland VersaWorks** and click on **Online Update**.



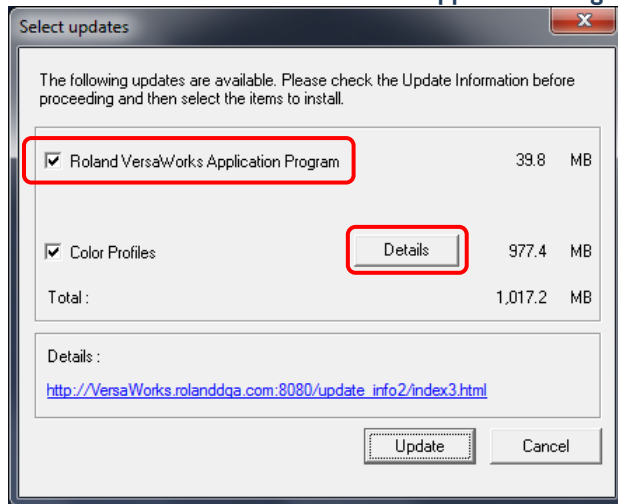
10. Click **Check for updates**.



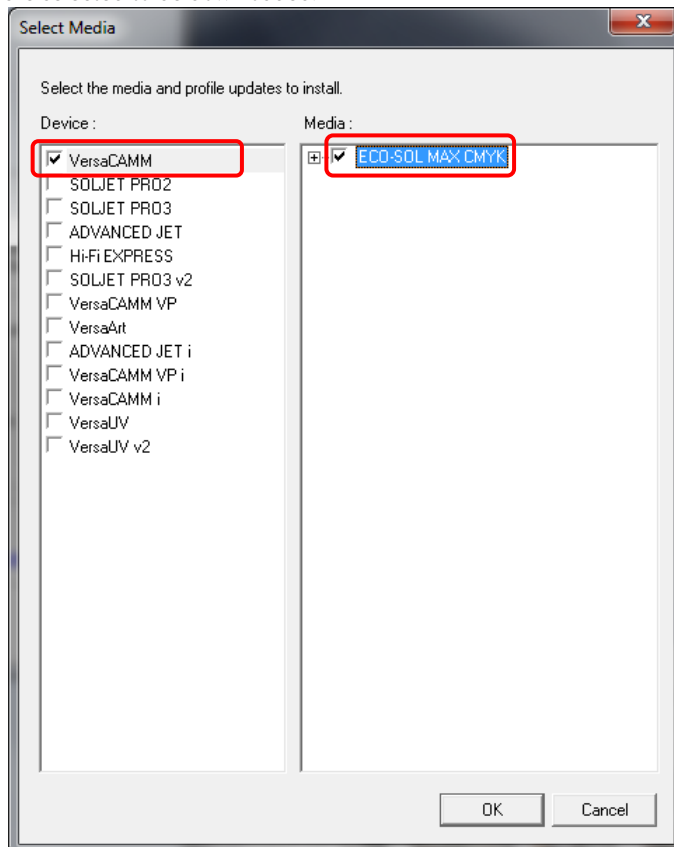
11. You will be prompted to register your printer. Click **Register** and fill the required information on the Registration page. If you have registered your printer before, you will be prompted to confirm the registration by entering the e-mail address or the zip code. This information should match with the data provided with the registration or you will be asked to register again.



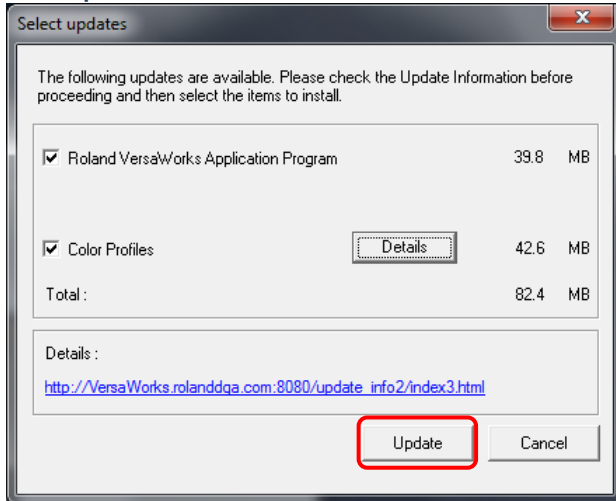
12. Once the registration is completed, you will be able to select the items to download. Please make sure **Roland VersaWorks Application Program** is checked.



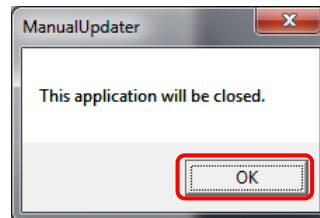
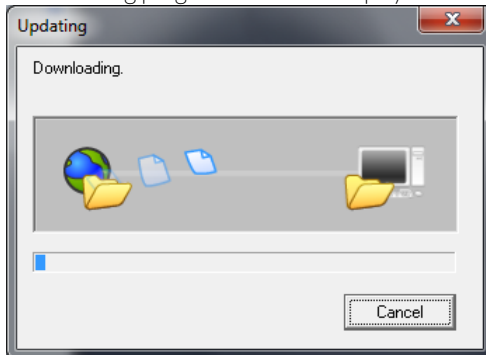
13. You can click on **Details** to select the profiles you want to download and then click **OK**. Downloading profiles only relevant to your device will significantly reduce the downloading time. In the example below, only the profiles for the VersaCAMM SP-300V/540V are selected to be downloaded.



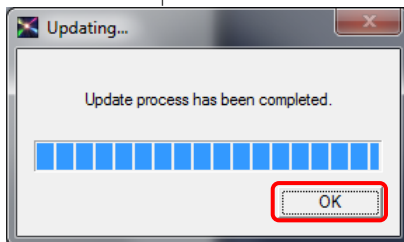
14. Click **Update**.



15. Downloading progress window is displayed. Click **OK** once downloading is completed.



16. Wait until the update is finished and click **OK**.



17. Launch VersaWorks. Your VersaCAMM is now ready for use.