

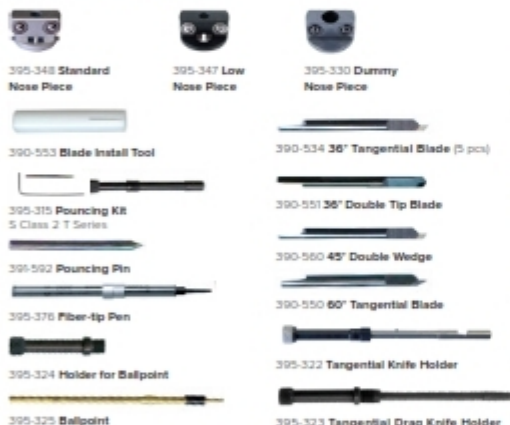
Shenzhen Oyea Machinery Co., Ltd

Consumables & Software

SUMMACUT & S CLASS 2 D SERIES



S CLASS 2 T SERIES



GENERAL



Cutter knife guidelines

When you choose a knife to cut your material, always use the lowest degree knife (shallowest angle), assuming the thickness of the material did not exceed the maximum listed for that knife.

	D Series				T Series			
	391-360 / Dia 1.5 mm / 36°	391-231 / 60° Drag Blade	391-358 / 55° Drag Blade	391-363 / Dia 2 mm / 36°	395-534 / 36° Tangential Blade	395-551 / 36° Double Tip	395-560 / 45° Double Wedge	395-550 / 60° Tangential Blade
Standard Vinyl								
Engineering Reflective								
Sandblast (Monument)								
Shishstone								
Heat Press (Apparel)								
Material thickness is the first specification to determine which knife to use. If the material thickness is unknown, please use the following recommended chart.								
Max. Thickness (mm)	0.25	0.60	0.80	0.25	0.25	1.00	1.20	
Max. PinCut Thickness (mm)	0.50	0.60	0.80	0.25	0.25	1.00	1.20	
391-332 / Dia 1.5 mm Standard Drag Knife Holder								
391-363 / Dia 2 mm Thicker Material Knife Holder								
391-231 / 60° Tangential Knife Holder								
391-358 Standard Nose Piece								
391-327 Low Nose Piece								
391-323 Dummy Nose Piece								
is used for Ballpoint and Holder for Drag Blades								

WINPLOT™ & MACSIGN™ CUT

WinPlot

WinPlot is a cutting software utility for the Microsoft Windows operating systems, which is delivered free of charge with every new Summa cutter.

Compatibility: WinPlot supports all Summa cutting devices, including SummaCut and S Class 2. Supported communication ports: USB, serial (RS 232), ethernet, centronics parallel and any printer port installed on your operating system which enables networked printing.

Input: Includes plug-ins for CorelDRAW and Illustrator and imports simplified .eps, .ai and .pdf files from other applications.

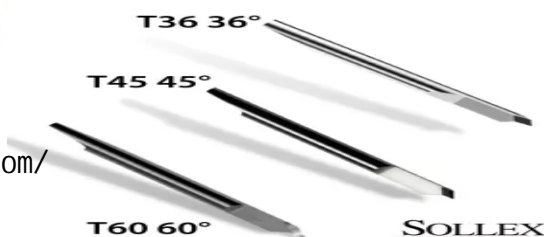
Edit: Allows scaling, mirroring and rotating of the design or parts of the design.

Output:

- **Nesting with support of multiple copies:** WinPlot automatically rotates and positions different designs as well as multiple copies in order to optimize the use of material.
- **Paneling:** Jobs larger than the media width will be split in panels.
- **Integration of OPOS:** Using Summa's Optical Positioning System has never been easier.
- **Weeding Box:** Automatically generates weeding boxes around cut images.
- **Cutting by color**

MacSign Cut

MacSign Cut is a "bridge" application that imports artwork saved by popular desktop publishing applications (e.g., Illustrator, Freehand, Canvas, CorelDRAW, and so on) and sends them to Summa vinyl cutters. Imported artwork is displayed on the worksheet before processing and can be resized, positioned, mirrored, turned, distorted, duplicated, etc. The tiling feature separates a design into two or more pieces, with user-specified overlaps, and allows you to cut designs larger than the cutter width.



<https://www.china-oyea.com/>