

Roland VersaWorks
Maximizing Print/Cut Accuracy with Multiple Copies
Print a row, cut a row workflow



Maximizing Print/Cut Accuracy with Multiple Copies

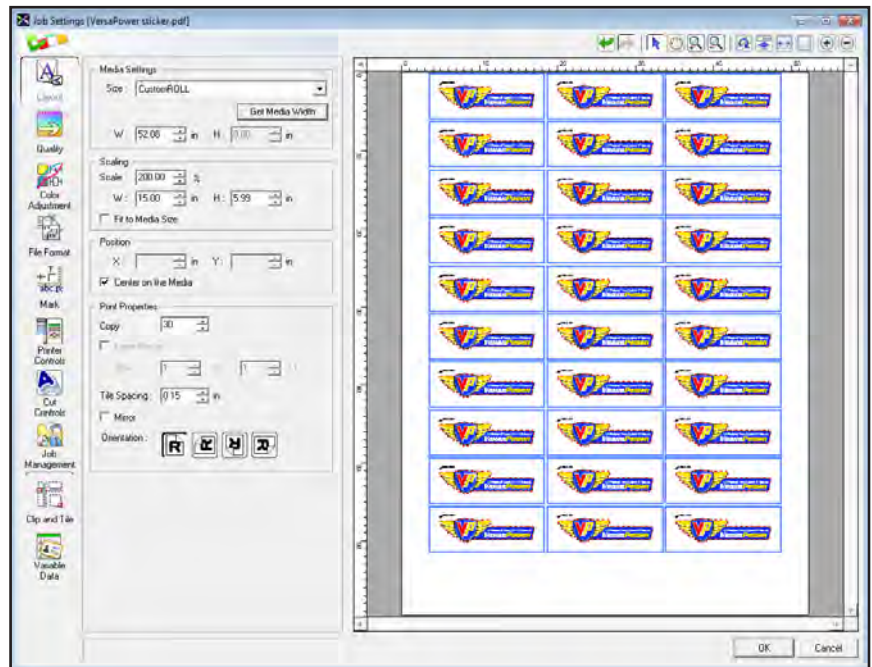
It is no mystery that the longer a print and cut job is, the less accurate the cut alignment becomes. Here's a little VersaWorks tip to help improve workflow and cut accuracy on jobs that call for multiple copies, using the **CustomCUT** feature within VersaWorks.

Typical Setup

First let's look at a typical job setup in VersaWorks. The figure on the right shows a standard job in VersaWorks. This job contains 30 copies of a specific object. All 30 decals will be printed first and then cut automatically in a single routine. In the case of some materials, this will drive the printer to travel a long distance, resulting in displacement or a slight mismatch between the printed object and its cut contour over the course of the job.

Tech Tip: VersaWorks sends the cut portion of the job to the printer upon "end of page". In this case the page contains all of the decals requested, 30 copies.

The **CustomCUT** feature in VersaWorks allows the user to subdivide the page into multiple segments, instructing the printer to print and cut in smaller segments resulting in great print cut registration accuracy.

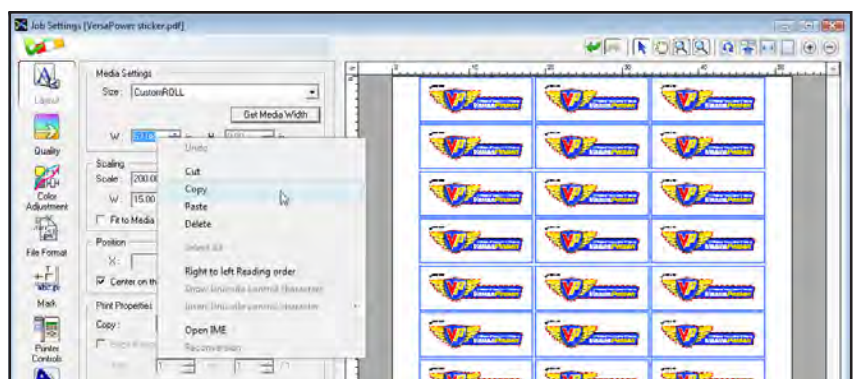


Step 1

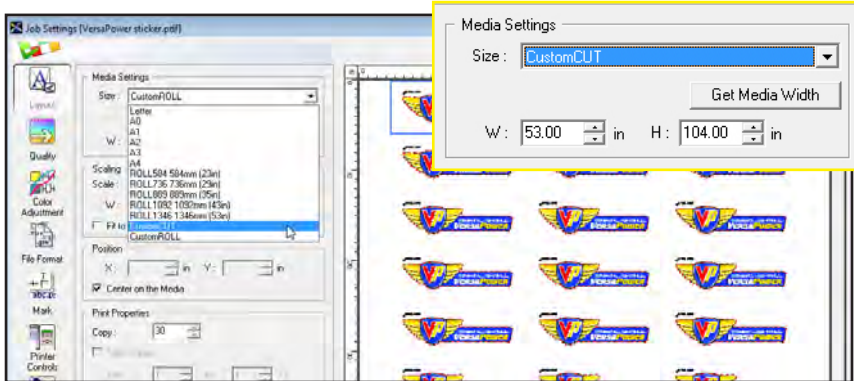
Choosing how many rows to print and cut

With this workflow, VersaWorks will subdivide the job into multiple pages to process. Here are the steps to create a smaller page size.

A. First, make all the desired settings for the job. This would include number of copies, size, quality settings, etc.

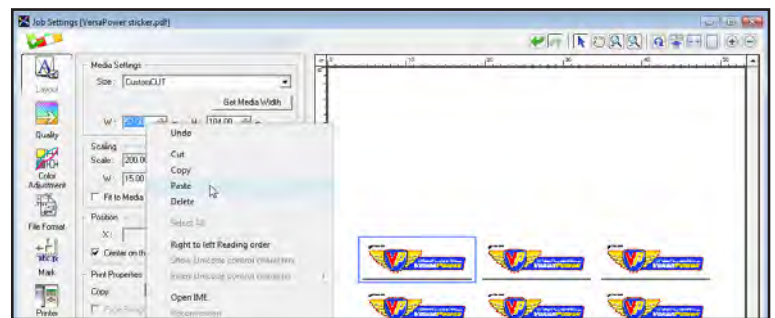


B. Navigate back to [Layout] and record the current width of the material in the printer. This is in the [Media Settings] area. Select the [Get Media Width] to get the current media width and record it. (**Tech Tip:** Right click on the width and select copy).



C. Once the width has been recorded, select the [Size] drop down and select [Custom Cut]. Notice that the width of the setup has changed back to the default width (max of the printer) and the height changed to 104”.

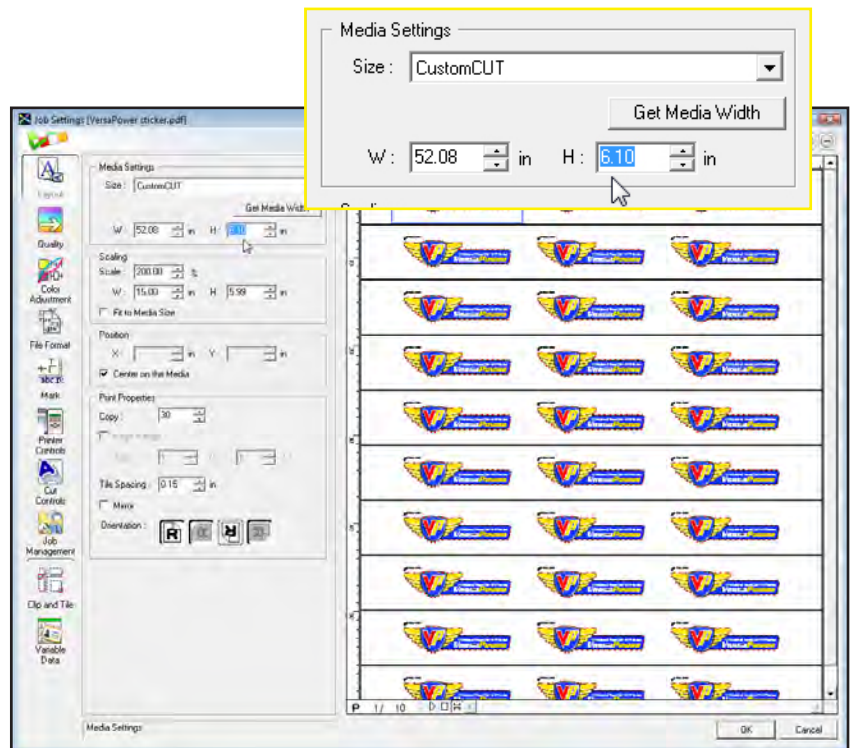
D. Right click in the [Width] area again and select paste. This enters the correct width of the material currently loaded in the printer, which was copied from the last step.



E. Now it's time to determine how many rows are to be process at a time. In the [Scaling] area of the layout window, there are four selections. Scaling, width, height and fit to media size.

The height in this area refers to the height of each decal, or in this case, each row. Change the 104” height in the [Media Settings] field to be just slightly larger than that in the [Scaling] field. The job preview at the right will change to reflect each row as a different page.

Tech Tip: If more than one row of decals needs to be printed and cut per “page”, simply multiply the height by the number of rows needed. In this example, if 2 rows are needed, the height of the custom cut media setting would be approximately 12.20 inches.

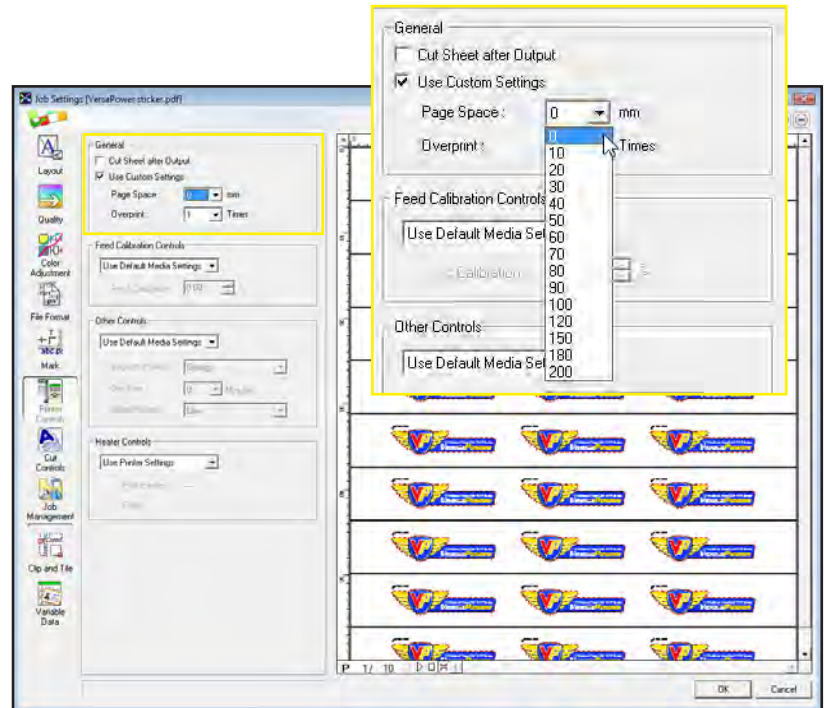


Step 2

Changing the page spacing

Because VersaWorks is processing multiple pages, the page spacing will apply to each row. Most Roland print/cut devices have a default page space of 40mm. Leaving this setting in place is acceptable, however, it results in the use of extra unnecessary material. Use these steps to change the [Page Space].

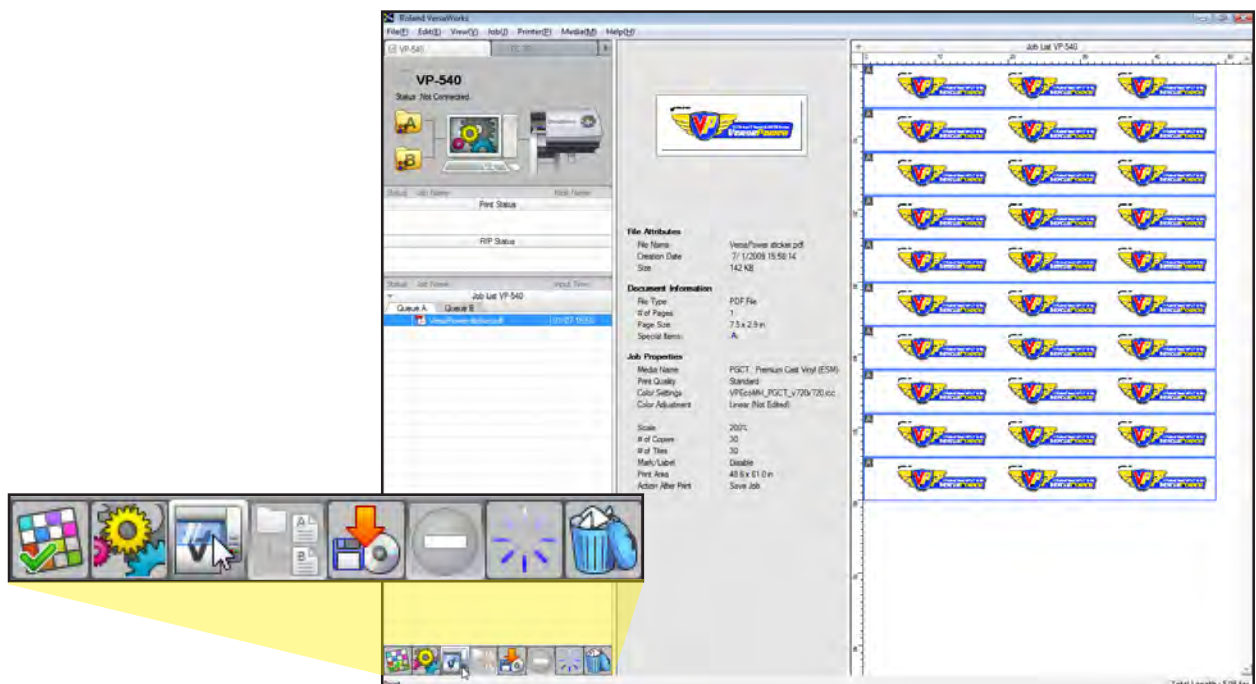
- Navigate in the job settings to [Printer Controls].
- Place a check in the [Use Custom Settings] box in the [General] area.
- Change the page spacing to the desired value.
- Select [OK] for the [Job Settings] window.



Step 3

Printing your job

Once all the parameters have been set for the Job, apply the Settings and process the Job. Simply select the Job in the Job List and select the [Print] button at the bottom of the Queue.



The use of the CustomCUT feature will result in increased printing and cutting accuracy of objects over the run of long jobs, especially in the case of small decals. For additional information about this feature, please refer to the Roland VersaWorks User's Manual.