

APPLICATION

Note: For graphics larger than poster size, we recommend contacting a professional graphics installer for assistance.

General Instructions

Please review the General Instructions and Method: Horizontally-oriented Graphics or Method: Vertically-oriented Graphics before applying this film.

Surface Preparation

Surface must be thoroughly cleaned and dried before this film is applied.

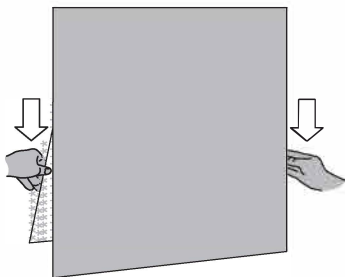
The installer must determine whether the surface has a low surface energy coating. To do this, splash water on the surface; if it beads up, it has a coating. To help ensure good adhesion of the film to the surface, the installer should clean the surface with a low abrasive cleaner such as Soft Scrub or Bon Ami surface Cleaner. This should remove any coating that may affect film adhesion.

General Instructions

Two people are required to apply most graphics. Notice the dark and light hands in the illustrations.

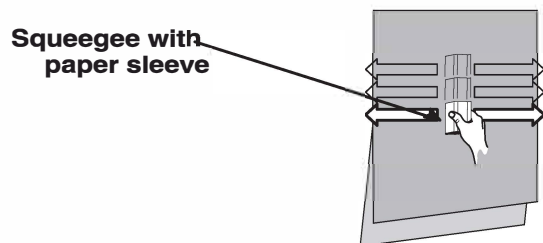
Liner Removal Technique

Use two hands when pulling the liner from the film, using care not to stretch the film.



Application Technique

- Use a squeegee with a paper sleeve
- Pull the squeegee with your hand, don't push the across the graphic, which stretches the film.
- Stroke in a straight line-not in an arc.
- Use firm, overlapping strokes.
- Re-stroke all edges after applying the graphic.



Maintenance and Cleaning

Refer to Instruction Bulletin 6.5.

Removal

Using two hands, start at the top of the graphic and pull it down slowly at a 120 to 180 degree angle.

Any residual haze on the surface can usually be removed by wiping it with a clean, dry cloth. If necessary, also use a household surface cleaning product.

See Instruction Bulletin 6.5 for more details.

Shelf Life, Storage and Shipping

Shelf Life

Unprocessed: up to 4 months after receipt.

Processed but unapplied: 5 months or less (see Example).

Total as processed and unprocessed: not to exceed 10 months.

EXAMPLE: If the film was stored for 16 months before processing, it must be applied within 8 months after processing.

Storage

Store the film in a clean, dry area in the original container.

Store the film out of direct sunlight and at less than 100°F (38°C).

Shipping

Ship the finished graphic lying flat or in a roll. To roll the graphic, roll it film side out onto a core that is 6 inches (15 cm) or larger in diameter. These methods help prevent the film and application tape from wrinkling or popping off the liner.

NOTE

Any surface that has a newly or recently painted coating on it needs to allow the paint to fully out-gas and totally cure, consult with the paint manufacture for this time frame.

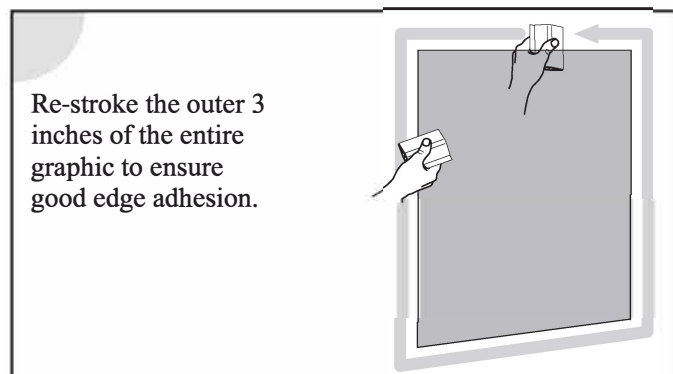
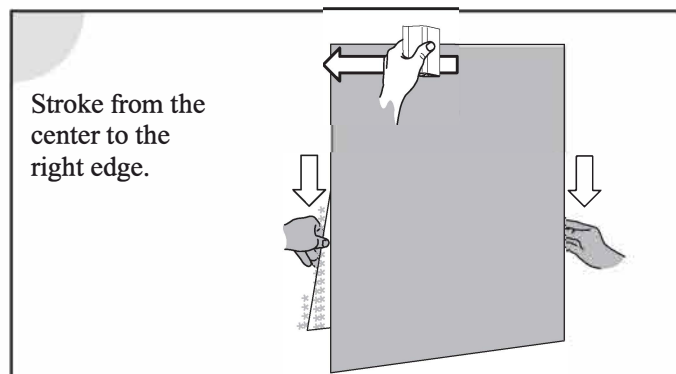
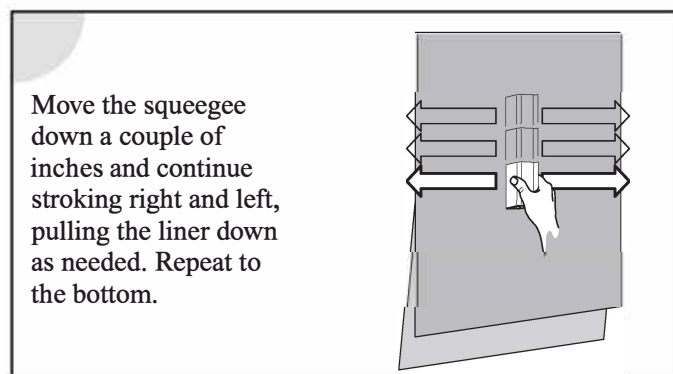
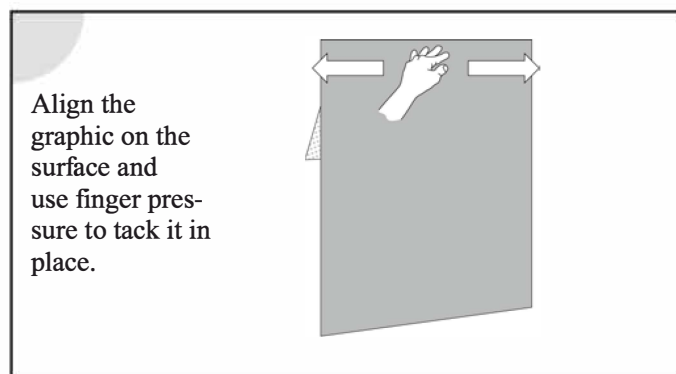
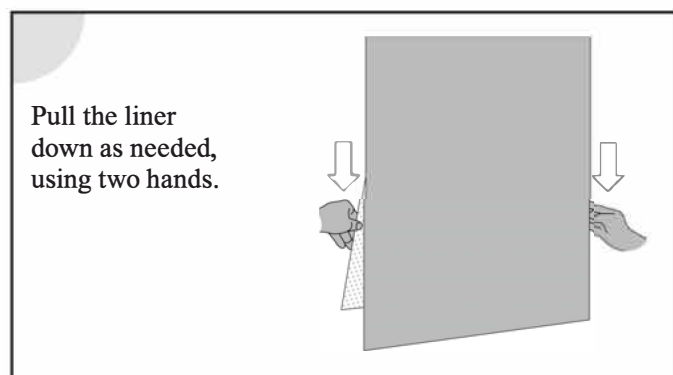
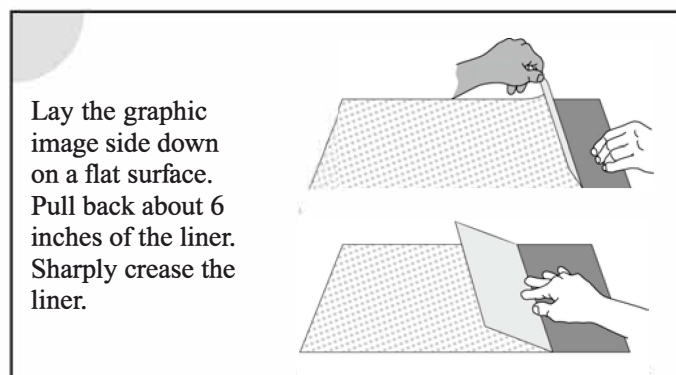
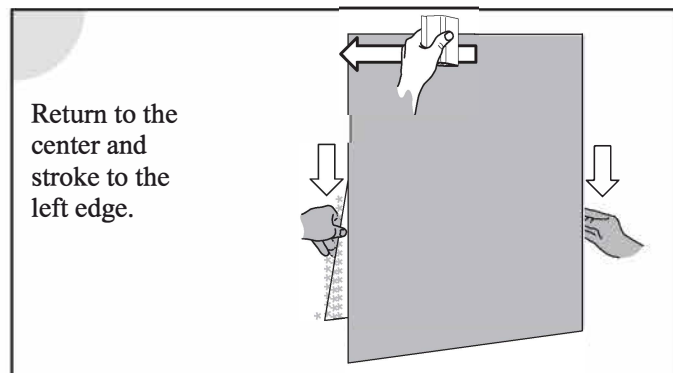
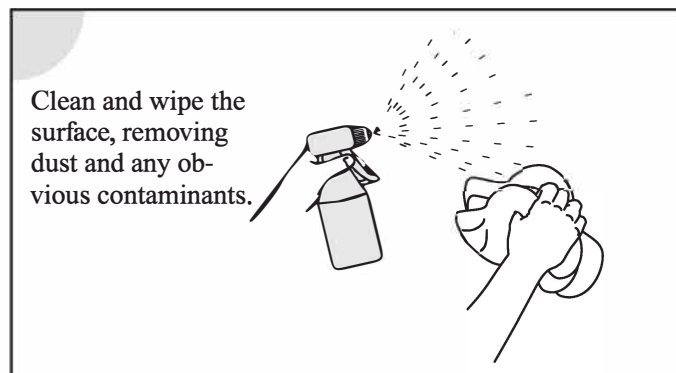
This needs to be done prior to the graphics being applied to the surface. Otherwise there is a risk of premature vinyl failure, improper surface adhesion and/or damaging the paint on the intended surface.



APPLICATION METHOD 1

Orientation: Vertical (graphic is taller than it is wide)
Imaging Method: Screen printed, Electrostatically imaged, Offset printed

Please review the General Instructions and this Method before applying the film.



APPLICATION METHOD 2

Orientation: Horizontal (graphic is wider than it is tall)

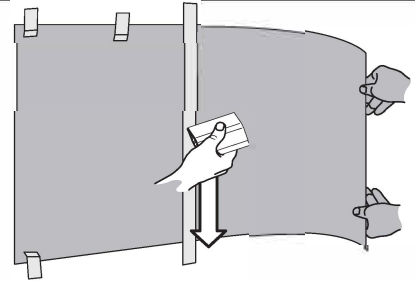
Imaging Method: Screen printed, Offset printed (see Method 3 also)

Please review the General Instructions and this Method before applying the film.

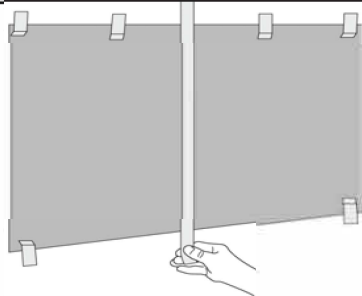
Clean and wipe the surface, removing dust any obvious contaminants.



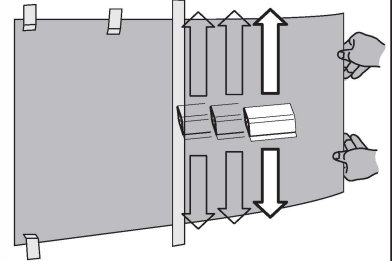
Return to the center, and stroke down.



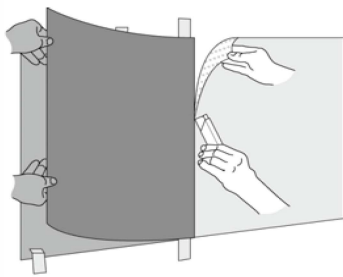
Align the graphic on the surface, and tape it in place as shown. Place a long strip of masking tape as shown.



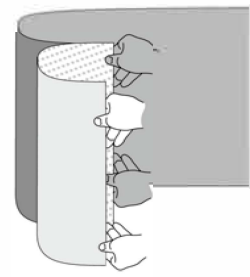
Move the squeegee about two inches left. Repeat Steps 6 and 7 across the graphic, allowing more of the graphic to lay against the surface as you work to the left.



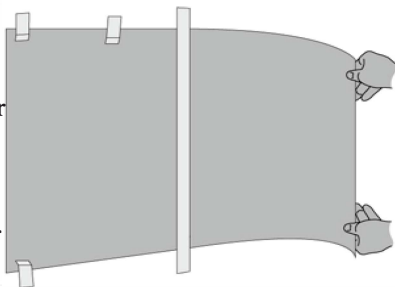
Remove the short strips of tape from one side. Pull the film away from the liner all the way to the long strip of tape. Carefully cut off the liner.



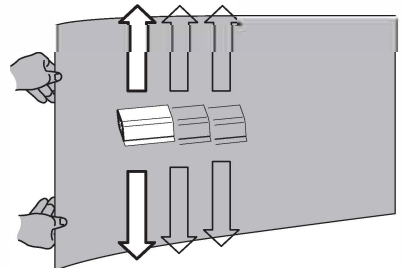
Remove the remaining masking tape. Lift the right side of the film and remove the remaining liner.



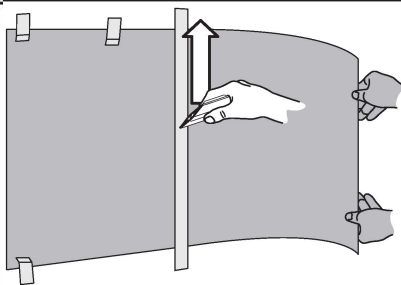
Allow the part of the graphic near the center tape to lie against the surface. Gently hold the rest of the graphic away from the surface.



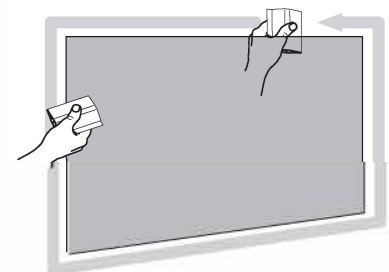
Repeat Steps 5, 6, and 7 across the other side of the graphic.



Begin at the center and stroke up.



Re-stroke the outer 3 inches of the entire graphic to ensure good edge adhesion.



APPLICATION METHOD 3

Orientation: Horizontal (graphic is wider than it is tall)

Imaging Method: Screen printed, Offset printed (see Method 3 also); Electrostatically printed

This method, which uses no masking tape, is required if your graphic was made with wear coat and image transfer. The use of tape pulls off the toners and wear coat.

Please review the General Instructions and this Method before applying the film.

