

## 3-4 Replacing Consumable Parts

### Replacing the Wiper

TIME FOR  
WIPER REPLACE ↵

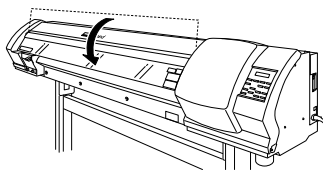
The wiper is a component that you use when cleaning the print heads. When the screen displays a message like the one shown, it means the item needs to be replaced. Replace with a new item.

#### ⚠ CAUTION

Be sure to perform operations as specified by these instructions, and never touch any area not specified in the instructions.  
Sudden movement of the machine may cause injury.

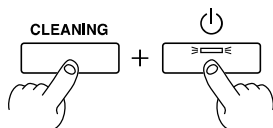
#### 1. Enter the wiper replacement mode.

1



Remove any media from the platen and close the front cover.

2



Switch off the sub power.  
Hold down **CLEANING** and switch on the sub power.

3



Press **▲** **▼** to choose [WIPER REPLACE].  
Press **ENTER**.

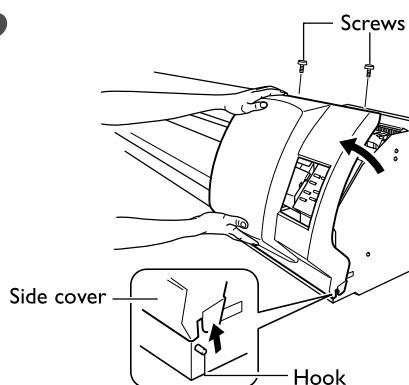
4



Preparations are complete when this screen appears.

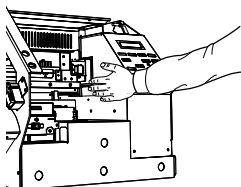
#### 2. Remove the side cover.

1



Remove the side cover.

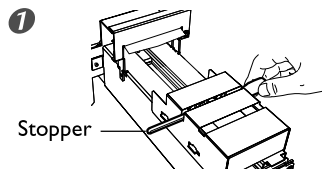
2



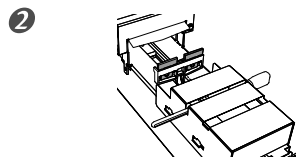
Touch the location shown in the figure to discharge any static electricity.

### 3. Attach a stopper. For the stopper, use a cleaning stick or the like.

---



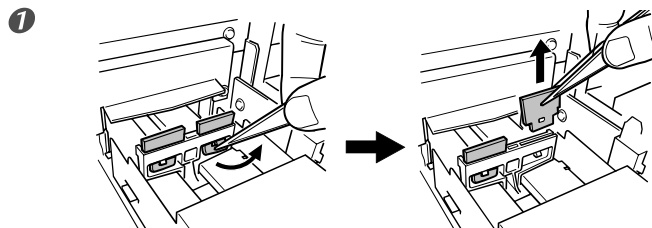
Install the stopper in this groove.



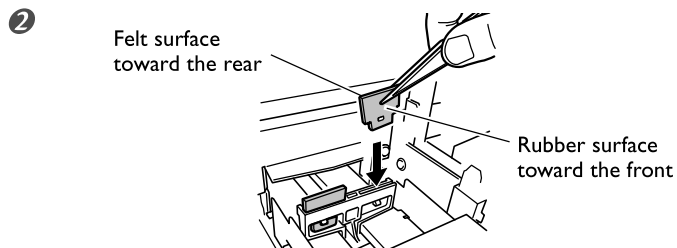
Press **ENTER** .  
The wipers move.

### 4. Replace the wipers. Use the included tweezers.

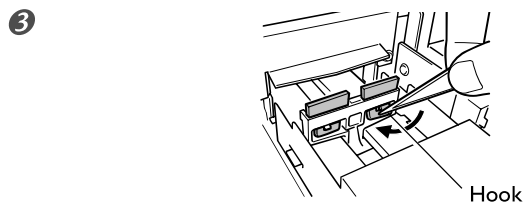
---



Detach the old wipers.  
Detach the hook and pull up and out.



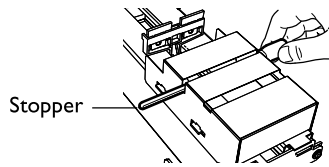
Insert the new wipers.



Attach the hook.

## 5. Remove the stopper and reattach the side cover, and quit the wiper replacement mode.

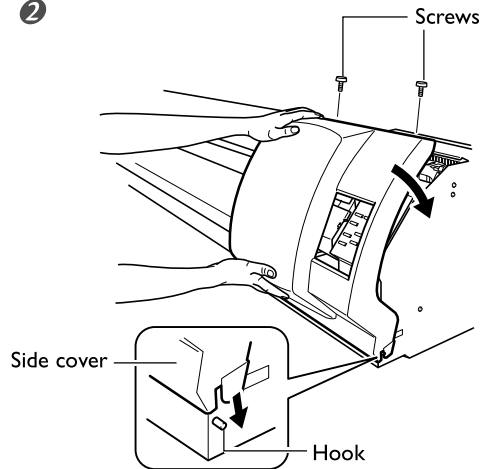
1



Remove the stopper.

REMOVE STOPPER

2



Attach the side cover.

3 Press **ENTER**.

After the processing to quit the wiper replacement mode ends, the sub power is switched off.

4 Perform a printing test to verify the results of the procedure.